

Education and Outreach Division

October- November 2016 Update

Submitted by Melissa Griffiths Parrott, Education and Outreach Coordinator

1. *A Day in the Life*- Student citizen science research program. Carmans River and the Peconic Estuary were represented by the Central Pine Barrens Commission, the other river ecosystems were represented by Suffolk County Water Authority.

- All of the Education and Outreach division’s programs in and out of the Pine Barrens region focus on Pine Barrens Ecology and Long Island Ecology.
- 2016’s program grew by 3 river ecosystems and 500 students.
- Over 2,200 students and 100 teachers were exposed to or introduced to Pine Barrens ecology.

1. *Carmans*- September 23
2. *Green’s Creek*- September 23
3. *Gardiner’s County Park* – September 23
4. *Massapequa Park Preserve*- September 30
5. *Nissequogue*- October 7
6. *Carlls (Seatuck Environmental Assoc.)* - October 14
7. *Peconic Estuary*- October 21
8. *Connetquot*-November 4
9. *Mill River (Seatuck Environmental Assoc.)* – November 4

River/Estuary	Students	Teachers	Schools	Experts
Mill River	60	2	2	4
Connetquot River	142	10	3	13
Green's Creek	21	1	1	1
Carmans River	413	21	9	30
Nissequogue River	346	20	10	20
Peconic Estuary	919	36	16	38
Carlls River	232	4	3	7
Massapequa Preserve	37	4	2	8
Gardiner's County Park	38	2	1	2
Total	2208	100	47	123

A Day in the Life Totals:

- **2, 300 (2,208) STUDENTS**
- **40 SCHOOLS**
- **100 TEACHERS**
- **49 PARTNER AGENCIES/ORGANIZATIONS**
- **123 EXPERTS**

Website for data/photos/details: www.portaltodiscovery.org/aday or www.facebook.com/adayinthelifeofariver

Partners:

Foundation for Ecological Research of the Northeast (FERN), the Peconic Estuary Program (PEP), Brookhaven National Lab, The Central Pine Barrens Commission, NY State DEC, SCWA, Yaphank Civic Association, Trout Unlimited Art Flick Chapter, Post Morrow Foundation, Wertheim National Wildlife Refuge, Town of Brookhaven, Suffolk County Parks, Manor of St. George, Girl Scouts of Suffolk County, USGS, Eastern Suffolk BOCES, Sweetbriar Nature Center, NY State Parks, NY Sea Grant, 4 Harbors Audubon, Avalon Park and Preserve, The Nature Conservancy, Long Island Sound Study, Cornell Cooperative Extension- Suffolk County, The Group for the East End, South Fork Natural History Nature Center, East Hampton Town Shellfish Hatchery, The Holzapfel's, the Long Island Science Center, Chris Paparo, SUNY Southampton, The Peconic Institute, Cold Spring Harbor DNA Learning Center, Sayville HS, Seatuck Environmental Association and their experts.

- Main "A Day in the Life" coordinators: *Central Pine Barrens Commission, Brookhaven National Lab, NYS Department of Environmental Conservation and Suffolk County Water Authority.*
- This program has become a regional success with school districts and partnership opportunities.
- ***SEE ATTACHMENT FOR ADDITIONAL A DAY IN THE LIFE INFORMATION.***

2. 4th Annual Long Island Natural History Conference- @ Brookhaven National Lab- Steering Committee

- Friday - Saturday, March 24- 25th, 2017
- Two Day format
- Teacher Professional Development Points will be available again this year
- Save the date cards will be going out this month
- Topics to be confirmed:
 - Exploring Long Island's Underwater World.
 - Salt Marshes: A Natural and Unnatural History."
 - Long Island Shark Collaboration: Update of their white shark nursing grounds research.
 - Beach grass
 - Horseshoe Crabs
 - Steve Engelbright; overview of LI's geology

Website: <http://longislandnature.org/>

3. School Outreach – 263 students

Rocky Point MS – 25 students
Eastport South Manor HS – 82 students
Eagle Avenue Elementary, Patchogue/Medford – 100 students
Sayville HS – 56 students

Central Pine Barrens Commission
Science and Stewardship Division Update
Prepared by P. Weigand, November 16, 2016

Internships - SPB Program:

The Commission is pleased to welcome two new interns: Kate Abazis and Michael Ferrara who joined our team on November 1, 2016. Kate and Michael’s assistance is integral help conduct SPB surveying, monitoring and outreach and education programming. The interns will remain on staff through March with wages covered under the Commission’s NYS DEC SPB grant.

Restoration:

Pitch Pine Cone Collection Events:

The Protected Lands Council hosted 3 pitch pine seed collection days with the Seeds of Success Program and the Long Island Native Plant Initiative to bank seed of Pitch pine (*Pinus rigida*) for use in tree production and future restoration. The NYSDEC Forest Health staff is aiding in the delivering of harvested cones to Saratoga Tree Nursery where they will be baked in a kiln to open serotinous cones and then cleaned. A portion of seed will be directly utilized by Saratoga Tree Nursery for restorations and remainder banked in the Mid Atlantic Regional Seed Bank to maintain viability and long term use for propagation and restoration. The collections amassed resounding support resulted in mass collection of cones. We thank all of our partnering organizations, agencies and individuals who helped make these events a success.

Date	Location	# Volunteers	# Cones Harvested
10/6/2016	Hubbard CP Hampton Bays	16	3 (~ 150lbs)
10/20/2016	Spinney Rd. Flanders & Hubbard CP Hampton Bays	14	3 (~ 150lbs)
11/10/2016	Dwarf Pine Plains Westhampton Beach	19	4 (~200lbs)

North Atlantic Fire Science Exchange (NAFSE):

The North Atlantic Fire Science Exchange is the regional network affiliate of experts specializing in fire research, application and management across the United States. The Exchange serves as a platform to encourage “communication between scientists and land managers to ensure access to current research, development of innovative solutions for the region’s unique research and management challenges, and identification of research needs while balancing public safety, economic realities, and sustainable ecosystems.” To strengthen this regional network and increase fire science and management locally, the Commission in association with Brookhaven National Lab and New York State Department of Environmental Conservation have been actively engaged in discussions with NAFSE to increase regional representation directly on the Exchange Committee and to increase awareness of and participation by local agencies, organizations and individuals in NAFSE.

The first educational program to be hosted by NAFSE in cooperation with the Commission, BNL and NYSDEC is a workshop titled “Keeping the Pine in the Pine Barrens” which will be held at Brookhaven National Laboratory on May 3 and 4, 2017.

An evening program titled “Use of Fire in the Region” will be presented by regional land managers from New York, Massachusetts and New Jersey. On May 4th the importance of fire in maintaining diversity, function and persistence of Pine Barren ecological communities including healthy and resilient forests; reducing fuel hazard; and management of Southern Pine Beetle will be presented. An afternoon field trip will further illustrate the ecological and economic benefits of fire management within the Central Pine Barrens.

Sand Plain Grassland Managers Meeting:

Annual meeting of Sand Plain Grassland managers was held at Hempstead Plains on October 18, 2016. Regional managers presented on activities advanced during the year on respective grasslands and Commission staff presented the Sand Plain Grassland Network, a larger regional effort to coordinate grassland management and research with in the Northeast from Long Island to Maine similar to NAFSE. As we are losing more grasslands than any other habitat due to development, conversion to agriculture, invasive species encroachment, and natural succession, this effort is integral to most effectively manage and protect the grasslands of the region.

Sawyer Team:

A team of trained and certified sawyers is being developed by Commission and Suffolk County Water Authority staff to help respond to local suppression efforts including SPB as well as grassland succession. Training on Saw Maintenance was conducted on November 4, 2016 in anticipation of early winter suppression cutting which will be led by New York State Department of Environmental Conservation following an in-the-field refresher training in the next coming weeks. First Aid and CPR will also be provided training.

Forest Health - Southern Pine Beetle:

NYSDEC Southern Pine Beetle (SPB) Surveying Training:

Commission staff with assistance of New York State Department of Environmental Conservation staff conducted a 1 day field Southern Pine Beetle Surveying training for Commission Interns as well as Town of Brookhaven, Suffolk County Department of Parks and Recreation and Town of Southampton staff. This classroom and in-the-field training highlighted southern pine beetle biology, behavior, and identification as well as provided an introduction to the equipment, devices and techniques to collect data on SPB populations. In turn, this data will be used to help plan, focus and track management reflective of the insects’ occurrence, level of infestation, rate and direction of spread and impact especially in association of the anticipated announcement of the SPB grant recipients. Additional trainings on SPB identification will be held for Town of Southampton staff, Suffolk County Water Authority, and other agency staff as requested.

Grant Application Assistance:

While recipients of the SPB Grants have yet to be announced, Commission staff remain focused on providing technical assistance to recipients including above mentioned training as well as surveying of stands for purposes of suppression and/or hazard removal.

Southern Pine Beetle Trapping:

In continued collaboration with Cornell Cooperative Extension of Suffolk County, data on southern pine beetle population and pest cycles continues to be collected and analyzed through weekly monitoring of pheromone baited traps.

Southern Pine Beetle Ground Surveys:

Commission staff has begun surveying SPB populations in Hubbard County and Sears Bellows County Park which is expected to continue through winter months to aid in monitoring and suppression efforts. Commission staff will also be aiding the Town of Southamptton staff in conducting surveys as well to further aid the Town in suppression on Conservation Protection Fund properties.

Southern Pine Beetle in the Northeast Research and Management Forum:

The Division is working with co-sponsors to plan this event. On March 8, 2017 at Brookhaven National Lab, leading researchers on SPB management from the South and Northeast will present on array of topics including SPB natural history, current extent in Northeast, suppression tactics, and Integrated Pest Management. On March 9, 2017, the event will feature field trips to affected areas. Save-the-Date postcards were mailed in October. The forum speakers are currently being confirmed and registration will commence in the beginning of January.

SPB DEC Aerial Surveys:

NYS DEC continues its periodic aerial forest health surveys. The information collected is essential to our cooperative SPB response program.

SPB Response Incident Command System (ICS):

The multi-agency SPB response effort continues to be managed through ICS.

Town of Southamptton/Commission Southern Pine Beetle MOU:

Two coordinating meetings have been held with the Town of Southamptton and Commission to help further develop SPB management within the Town which includes tracking of SPB infestations and hazard tree reports from concerned community members. In addition, discussions on developing proper handling and disposal of SPB affected trees especially at Town Transfer Stations has been initiated as well as technical approaches to most efficiently, safely, economically and effectively address hazards associated with SPB affected trees. Commission will continue to work with Town Staff to conduct trainings, aid in development of tracking program, as well as assist in surveying.

Other Forest Health Issues:**Oak Wilt:**

This serious disease of oaks, especially the red oak group, was discovered this season just west of Connetquot State Park. Removal of oaks from "Oak Free Zone" is expected to commence in December. Unfortunately, a second occurrence of Oak Wilt in New York State was detected in Canandaigua, New York in October 2016.

Ray Corwin Rocky Point to Yaphank Trail:

- The Long Island Greenbelt Trail Conference has blazed the northerly portion of the trail.
- Segments of the trail in the Rocky Point preserve were GPS'd by a DEC summer intern.
- An opening ceremony for NYS DEC's new multi-use trailhead at the former Lustgarten is planned.
- A route 25 trail crossing is planned by NYS DOT.
- Suffolk County Parks' boundary signs have been erected to address a severe encroachment along the trail route.
- Work to mitigate ATV damage and dumping in the trail corridor is ongoing.

Cartography/GIS:

- We are providing support for a legal case involving clearing in the core and conservation easement violations.
- Licenses for the use of GIS resources have been renewed.

Equipment and Supplies:

- Research, purchasing, and set up of field equipment, computer hardware and software, safety gear, and supplies have been primary focus of Division efforts especially for outfitting new staff.
- Sawyer and Wildfire field gear is also continues to be researched and purchased in anticipation of the prescribed fall burns, and SPB suppression activities.

Other:

- Maintenance of the Dwarf Pine Plains Trail continues.
- Aided Land Use Ecological Services in collecting final data for Hubbard County Planning Report.
- Mowing specifications were provided to NYS DEC to help with grassland restoration of the Edgewood Preserve.
- We are planning an update to the Commission's ATV /Dumping Mitigation Brochure.
- Utilizing Constant Contact for Commission promotion and information sharing. Responded to inquiries from the general public, land managers, and others.
- Professional Development
 - CPR Certified
 - Firefighter Type 1 Training
 - S219 – Ignitions Training

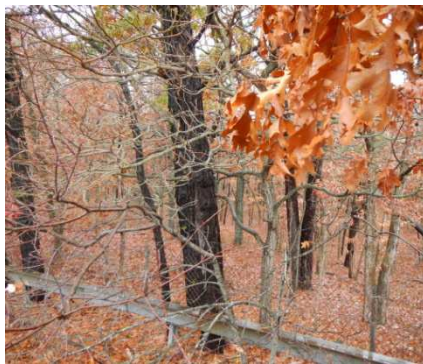
DEVELOPMENT PROJECT COMPLIANCE SITE VISITS			
Reporting Period: 8/21/07 - 11/16/16			
Central Pine Barrens	Brookhaven (District 200)	Riverhead (District 600)	Southampton (District 900)
Core Preservation Area	77	21	25
Compatible Growth Area	87	10	11

CONSERVATION EASEMENT MONITORING SITE VISITS				
Reporting Period: 8/21/07 - 11/16/16				
Core Preservation Area	Brookhaven (District 200)	Riverhead (District 600)	Southampton (District 900)	Totals
Tax Map Sections				
Total	46	9	55	110
Done	44	7	52	103
Pending	2	2	3	7
Tax Map Parcels				
Total	493	35	423	951
Done	485	35	411	931
Pending	8	0	9	17

COMPLIANCE AND ENFORCEMENT INCIDENT REPORTS										
Reporting Period: All from 1/1/16 - 11/16/16 and Open (i.e., Pending) from 2015										
Year	Brookhaven (District 200)		Riverhead (District 600)		Southampton (District 900)		Other		Totals	
	2016 All	2015 Open	2016 All	2015 Open	2016 All	2015 Open	2016 All	2015 Open	2016 All	2015 Open
Core	9	2	1	0	2	1			12	3
CGA	18	2	1	0	0	0			19	2
Non-PB	0	0	0	0	0	0	0	0	0	0
Totals	27	4	2	0	2	1	0	0	31	5

Central Pine Barrens Joint Planning and Policy Commission
 Land Use Division Bi-Monthly Update for the Meeting of November 16, 2016

Action	Central Pine Barrens Location (in CGA unless otherwise noted)			
	Municipality	Town of Brookhaven	Town of Riverhead	Town of Southampton
Pending Applications and Requests for Determination of Jurisdiction		<i>Henry Dittmer Core Hardship Waiver, Ridge, SCTM # 200-326-3-3. Adjourned, no deadline. Develop a single-family residence on 5,735 square feet.</i>	<i>Kent Animal Shelter Core Hardship Waiver, Calverton, SCTM #s 600-138-1-6.2 and 7.1. Decision deadline 12/21/16. Expansion and redevelopment of an existing animal shelter on 2.138 acres.</i>	<i>The Hills at Southampton Mixed Use Planned Development District, East Quogue (Core Preservation Area, Critical Resource Area, Compatible Growth Area). Development of a 591 acre project site including 118 residences, a private 18-hole golf course, 4.25 acre clubhouse area, two ponds, and other amenities. Assertion of jurisdiction on 10/21/15.</i>
Referrals, Inquiries, and Receipt of Information		<ul style="list-style-type: none"> <i>Middle Island Apartments, Middle Island, SCTM # 200-378-1-8, 12.4, and 13. Development of 96 residential apartment units on 13.41 acres.</i> <i>The Meadows at Yaphank PDD CGA-DRS, Yaphank. Referrals of development phases including four-story, 124-room extended stay hotel.</i> 	-	-
Other Activity and Participation	<ul style="list-style-type: none"> Review, analyze, and respond to the submission of development project applications, referrals, inquiries, information requests, SEQRA Coordination materials, site plans, subdivisions, PDDs, and other materials. Research and prepare materials to present Requests for Determination of Jurisdiction to the Commission. Supplemental Draft GEIS for the Central Pine Barrens Comprehensive Land Use Plan Amendments. Research and assistance with FOIL requests and litigation matters related to land use development projects. Project site inspections. Long Island Commission on Aquifer Protection. Participation in preparation of a Groundwater Mgmt. Action Plan. Support other Commission divisions. 			



Henry Dittmer Ridge



The Hills at Southampton MUPDD East Quogue



Kent Animal Shelter Calverton

November, 2016 Pine Barrens Credit Clearinghouse Report

This report provides a statistical compilation of the Credit Clearinghouse Program's (the Program's) transactions and Core parcels that have been preserved since the inception of the Program in 1995 and highlights the Program's activity specific to 2015-2016. Except where noted, all of the statistics reflect the Program's activity across the three participating towns, Brookhaven, Riverhead and Southampton. Individual Town level breakdowns referenced in this report are available at the end of this report (Appendix, Table 1-3), and on the Pine Barrens Credit Program main web page at: http://www.pb.state.ny.us/chart_pbc_main_page.htm.

Acreage Enrolled:

As of 11/9/16, there are 951 parcels enrolled in the Program, which are now protected from future development or for partially developed parcels, from further development since they have conservation easements placed on them. The development potential has been removed from these parcels and translated into Pine Barrens Credits in a certificate form. The owner may either use them directly to develop outside of the Pine Barrens Core Area or can sell to a developer who may need Credits to satisfy town zoning code requirements for extra development density or Suffolk County Department of Health Services sanitary requirements. The total acreage that has been encumbered by conservation easements is approximately 1,986 acres, with an average parcel size of 2.09 acres. From the larger Pine Barrens preservation perspective, these easement protected lands comprise approximately 3.5 % of the statutorily defined 56,836 acre Core Preservation Area.

Credits Issued, Redeemed and In Circulation:

Since the start of the Program in 1995 (the first Credits were actually issued in 1996), 988.39 Credits have been issued. Of these, 533.56 have been redeemed (54% of the issued Credits), while the remaining 454.83 Credits remain "outstanding" (i.e., issued but still in private hands and unredeemed). The Pine Barrens Credit Clearinghouse owns 10.19 Credits at this time that were purchased in 2011 through an offer made by the Clearinghouse to spend up to \$1 million to purchase Credits from Credit owners located in the Town of Brookhaven.

During 2016, 57.48 Credits were redeemed so far. Since only 0.71 Credits were generated in 2016, the net inventory level of the outstanding Credits went down by 56.77 Credits, which pushed the ratio down on the side of unredeemed credits.

Credit Sales and Prices Recorded:

There were 40.28 Credits sold during 2016 so far. The average "per Credit" sales price is \$75K (with the range from \$63,000 up to \$85,000 "per Credit")

Intermunicipal and Intertown Flows of Credits:

As of 11/9/16, a total of 114.99 Credits have crossed a municipal boundary (town or village) from their sending parcels to their receiving parcels, representing approximately 20% of all redeemed Credits, or approximately 1 in every 5 redeemed Credits (Appendix , Table 2).

From a strictly intertown perspective, 88.18 of these 114.99 credits crossed a Town boundary, representing 16% of all redeemed Credits, or approximately 1 in every 6 redeemed Credits (Appendix, Table 3).

In 2016, all Credits were redeemed to the Suffolk County Department of Health Services for sewage flow intensity increases.

Clearinghouse Funds:

The Clearinghouse currently has approximately \$2.5 million in available funds which are administered by the Suffolk County Treasurer's Office. There were no new deposits or disbursements during 2016. An end of year accounting of those funds is available at: http://www.pb.state.ny.us/pbc/sc_treasurers_report.pdf.

Easement Compliance and Enforcement (CAE) Activity:

The Commission's CAE Coordinator, working with our Land Use Division, has completed onsite inspections and baseline documentation reports for 931 of the 951 parcels enrolled in the Program, or approximately 98% of the parcels. In 2016 numerous field conditions either unrelated to the easement provisions or affecting nearby parcels or road right of ways have been documented and addressed through the CAE Division's Incident Reporting (IR) System.

These formal Incident Reports are then tracked until the field condition is resolved, usually in close coordination with public lands managers, highway departments, parks departments, environmental conservation police, or other agencies. Typical conditions include clearing, dumping, off road vehicle violations, vandalism or public property damage, etc.

Policy Initiatives:

In 2015, the Central Pine Barrens Commission completed a transaction under which almost 45 acres of land (136 individual lots) in the Carmans River watershed in Yaphank will be permanently preserved. In exchange, the property's owner, Enchanted Forest II LLC, received more than 51 Pine Barrens Credits, which can be sold or used for a variety of development purposes outside the Central Pine Barrens' Core Preservation Area.

Enchanted Forest was the first Credit Program transaction within the newly expanded core that was the result of the New York State Legislature's amendment to the Long Island Pine Barrens Protection Act to include the River's watershed area in an effort to better protect the river's hydrological and ecological resources. This implemented one of the recommendations of the

Carmans River Watershed Protection Plan that was prepared by the Town of Brookhaven to address the concerns related to deterioration of water quality of the river in recent years.

At its October 19, 2015 meeting, the Pine Barrens Credit Clearinghouse Board (the “Clearinghouse”) made a decision to have 10.19 Pine Barrens Credits available for the developers who might need them for redemption purposes, such as additional sanitary flow or increased number of residential units.

Appendix

Table 1.

Easement Protected Lands and Pine Barrens Credits As of November 9, 2016						
	Brookhaven	Riverhead	Southampton	Total	2015	2016
Parcels	493	35	423	951	139	3
Acreage	771.27	516.51	698.44	1986.22	45.71	3.11
Average parcel size	1.56	14.76	1.65	2.09	0.33	0.00
Credits generated	520.32	172.29	295.78	988.39	51.75	0.71
Credits redeemed	289.38	122.85	126.54	538.77	9.17	57.48
Credits not redeemed	230.94	54.65	169.24	454.83	42.58	-56.77
Credits sold*	467.09	214.14	227.7	908.93	28.99	40.28
Total value of PBC transactions through this date*	\$21,676,694	\$7,595,747	\$14,753,030	\$44,025,471	\$1,707,838	\$2,998,900
Credits owned by the Clearinghouse	10.19	–	–	10.19		

*Please note that Credits can be sold multiple times until they are redeemed.

Table 2.

Intermunicipal Flows of Pine Barrens Credits as of 11/9/2016				
Destinations	Originating from			Totals
	Brookhaven	Riverhead	Southampton	
Babylon (District 100)		2.71		2.71
Brookhaven Unincorporated (District 200)		28.85	13.64	42.49
South Country Village (202)	0.54			0.54
Patchogue Village (204)	0.2			0.2
East Hampton Village (302)			2.75	2.75
Huntington Unincorporated (400)		1		1
Islip Unincorporated (500)	11.22	15.41	7.13	33.76
Hauppauge Village (504)	0.53		1.17	1.7
Riverhead Unincorporated (District 600)	3.05		0.16	3.21
Smithtown Unincorporated (800)			0.1	0.1
Southampton Unincorporated (District 900)	0.46			0.46
Quogue Village (902)			0.37	0.37
Southampton Village (904)			18.15	18.15
Westhampton Beach Village (905)			7.55	7.55
Totals	16	47.97	51.02	114.99

Table 3.

Intertown Flows of Pine Barrens Credits as of 11/9/2016				
Destinations	Originating from			Totals
	Brookhaven	Riverhead	Southampton	
Babylon (District 100)		2.71		2.71
Brookhaven (District 200)		28.85	13.64	42.49
East Hampton Village (302)			2.75	2.75
Huntington (District 400)		1		1
Islip (District 500)	11.22	15.41	7.13	33.76
Hauppauge Village (504)	0.53		1.17	1.7
Riverhead (District 600)	3.05		0.16	3.21
Smithtown (District 800)			0.1	0.1
Southampton (District 900)	0.46			0.46
Totals	15.26	47.97	24.95	88.18

**Suffolk County Comptroller's Office
The Pine Barrens Credit Program**

Balance as of December 31st, 2015	\$2,508,707.73
Additional Deposits	0.00
Interest (see below for details)	4,196.11
Disbursements	0.00
Balance as of October 31st, 2016	<u>\$2,512,903.84</u>

**Interest Earnings & Disbursements
For the Months of January - December 2016**

Interest Earnings

Municipal Insured Public Funds NOW Account

January	398.67
February	426.24
March	426.31
April	398.87
May	440.21
June	412.77
July	399.07
August	454.19
September	412.97
October	426.81
November	0.00
December	0.00
	<u>\$4,196.11</u>

<u>Interest Period</u>	<u>APR</u>
01/01/16- 01/31/16	0.200%
02/01/16- 02/29/16	0.200%
03/01/16- 03/31/16	0.200%
04/01/15- 04/30/15	0.200%
05/01/15- 05/31/15	0.200%
06/01/15- 06/30/15	0.200%
07/01/15- 07/31/15	0.200%
08/01/15- 08/31/15	0.200%
09/01/15- 09/30/15	0.200%
10/01/15- 10/31/15	0.200%
11/01/15- 11/30/15	0.000%
12/01/15- 12/31/15	0.000%

Disbursements

None	\$ -
	\$ -