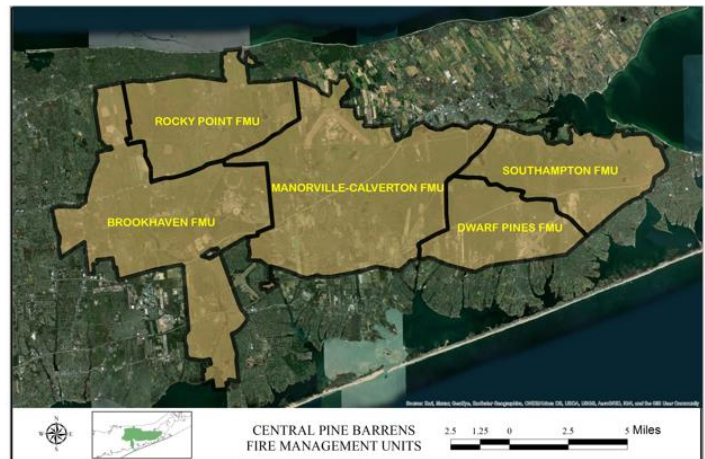




Comprehensive Prescribed Fire Management Plan



The Program:

The Central Pine Barrens Commission Role

NYS-DEC GRANT (2018-2023) TO THE COMMISSION TO:

- DEVELOP
- ESTABLISH
- LEAD
- IMPLEMENT

AN ADAPTIVE & COLLABORATIVE PRESCRIBED FIRE PROGRAM ON PUBLIC LANDS IN THE CENTRAL PINE BARRENS

GRANT PROGRAM TO:

- BUILD PRESCRIBED FIRE CAPACITY IN COMMISSION
- BUILD PRESCRIBED FIRE CAPACITY IN LONG ISLAND REGION

CPB COMMISSION ATTRIBUTES:

- No land ownership but core mission is planning & coordination
- Dedicated time for prescribed fire planning. Leadership & implementation
- Experienced / knowledgeable staff
- CPBC is not constrained from working across jurisdictions & land ownerships

Comprehensive Prescribed Fire Management Plan:

Why Do We Need It? / What's In It?

WHY HAVE THIS PLAN:

- Authorized by the Central Pine Barrens Comprehensive Land Use Plan
- Identified as a need in the Interagency Wildfire Task Force Fire Management Plan of 1999
- Provides interagency prescribed fire program direction
- Environmental Compliance

PLAN COMPONENTS:

- Ecological Background
- Land Use Background
- Fire Weather
- Fire History
- Fuels Descriptions
- Legal Requirements
- Burn Plan Preparation
- Management Techniques
- Fire Management Unit Descriptions
- Research & Monitoring

Notes: _____

Desired
Outcome:

Sustainable,
long term,
collaborative
and adaptive
program

GOALS:

- Promote Public & Firefighter Safety
- Maximize Use of Prescribed Fire to Provide Protection to Developed Lands Adjacent to Public Forested Lands
- Interagency Understanding of Organization and Agency Responsibilities
- Shared Prescribed Fire Processes, Management Units and Priority Targets
- Restore & Maintain Fire Dependent Species & Ecosystem Health
- Eliminate “Peaks and Valleys” of Prescribed Fire Activity and Management and Develop a Sustained, On-going Prescribed Fire Program.
- Plan & Use Prescribed Fire on a Landscape vs. Parcel-by-Parcel Basis
- Reduce Need for Expensive and Time-Consuming Mechanical Pre-Treatments

The Need:

Fire
Dependent
Ecosystems

CPB FIRE FACTS:

Fire Weather

Fire History

Alternatives to Prescribed Burning

No Management Action

Mechanical / Chemical

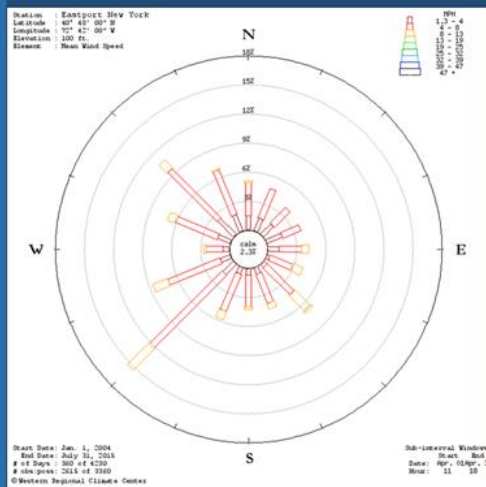
Wildfire

Notes: _____

The Need: Fire Dependent Ecosystems

CPB FIRE FACTS:

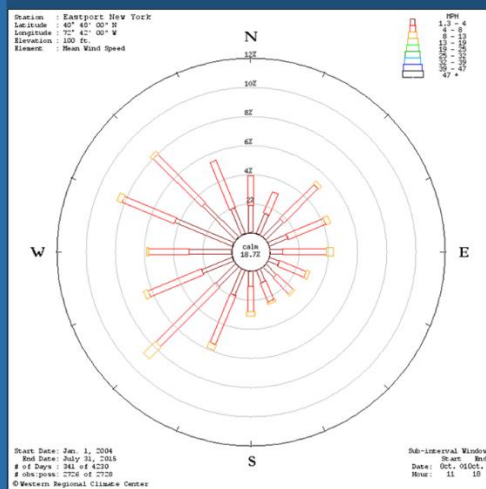
Fire Weather



The Need: Fire Dependent Ecosystems

CPB FIRE FACTS:

Fire Weather

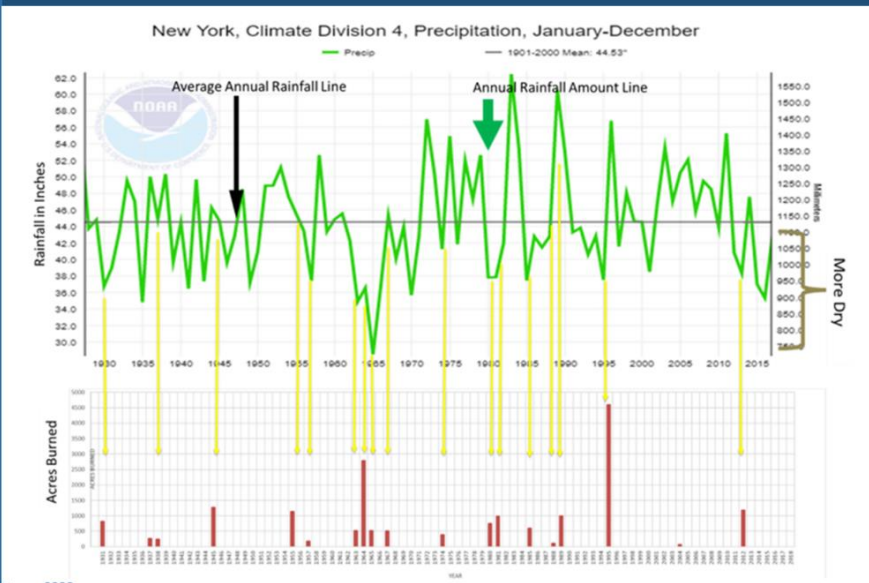


Notes: _____

The Need:
Fire
Dependent
Ecosystems

CPB FIRE FACTS:

Fire Weather



The Need:
Fire
Dependent
Ecosystems

CPB FIRE FACTS:

Fire Weather

Fire History

Central Pine Barrens Large Fire History 1931-2020

Fires analysis limited to fires with known date of origin

<u>Fires---</u> >	<u>30</u>		<u>Acres---</u> >	<u>17956</u>
<u>Month</u>	<u>Count</u>	<u>Percent</u>	<u>Acres</u>	<u>% Acreage</u>
April	16	53%	5386	30%
May	8	27%	3492	19%
July	2	7%	3368	19%
August	3	10%	5111	28%
October	1	3%	599	3%

Notes: _____

The Need:
Fire
Dependent
Ecosystems

CPB FIRE FACTS:

Fire Weather
Fire History
Alternatives to Prescribed Burning
 No Management Action
 Mechanical / Chemical
 Wildfire

The Need:
Fire
Dependent
Ecosystems

Current Conditions:

FRI & High Fuel Loading /
Arrangement
Wildland Urban Interface
Ecosystem Decline & Invasive Species
High Number of Fire Dependent T&E
Species

Notes: _____

The Need:
Fire
Dependent
Ecosystems

Current Conditions:

FRI & High Fuel Loading /
Arrangement

Sarnoff Pine Barrens State Forest
FRI = 40-60 Years
No Fire in Last 90 Years
FRI Departure = 30 – 50 Years Overdue



The Need:
Fire
Dependent
Ecosystems

Current Conditions:

FRI & High Fuel Loading /
Arrangement

Sarnoff Pine Barrens State Forest
Mechanically Treated NYS-DEC 2020
Ready For Prescribed Fire Treatment

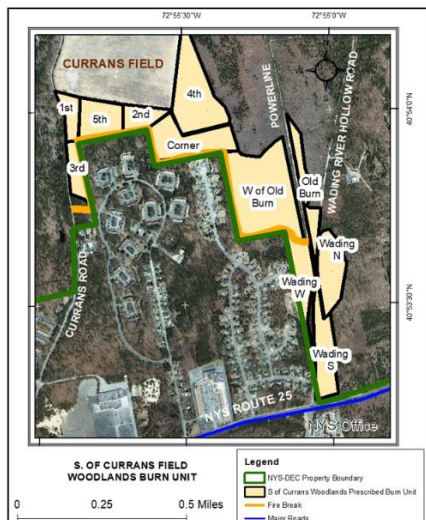


Notes: _____

The Need: Fire Dependent Ecosystems

Current Conditions:

FRI & High Fuel Loading /
Arrangement
Wildland Urban Interface



The Need: Fire Dependent Ecosystems

Current Conditions:

FRI & High Fuel Loading /
Arrangement
Wildland Urban Interface
Ecosystem Decline & Invasive Species
High Number of Fire Dependent T&E
Species



Notes: _____

Strategic
Actions:

Prescribed
Fire Program

Program Components:

- Interagency Collaboration
- Planning & Prioritization
 - Comprehensive Fire Management Plan
 - Prescribed Burn Plans
- Pre-Fire Vegetation Treatment
- Prescribed Burning
- Establishment of Cooperative Agreements
- Equipment and Cache Procurement and Maintenance
- Monitoring – Pre & Post Burn
- Centralized Information Storage

Strategic
Actions:

Public
Education

Program Components:

- General Public Education & Outreach
- Pre-Burn & Day of Burn Community / Subdivision Educational Outreach

Potential Actions Include:

- Public Events
- Fire Protection / Awareness / CWPP Information Distribution
- Distributing Burn Schedule(s) to Adjacent Neighborhoods
- Public Day of Burn Notifications
- On Site Information Day of Burn



Notes: _____

Some Key Fuels Findings Detailed in this Plan

**It's SAFER & Less Damaging
to Equipment Too!!!!**

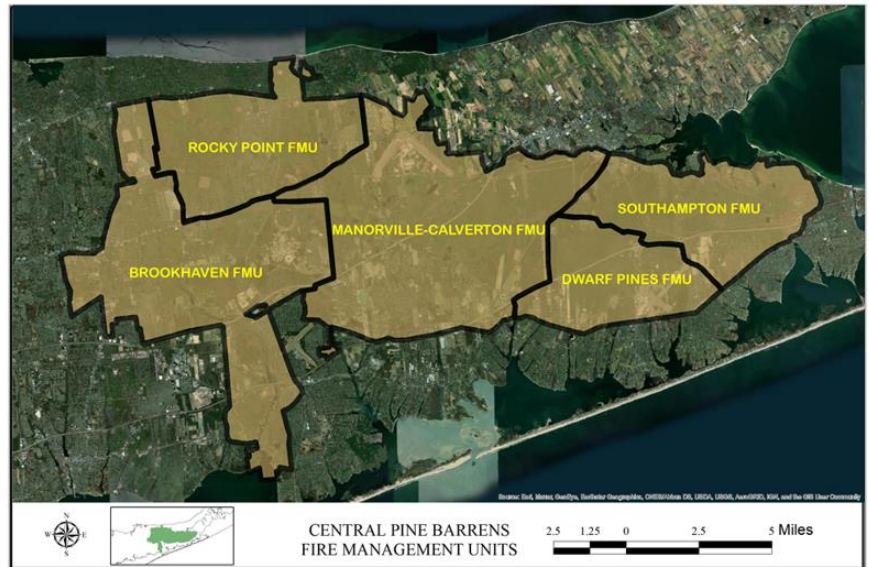
- The focus of prescribed burning is building a **mosaic of burned and unburned** fuels on the landscape to **break up the continuity of fuels** to help protect developments & promote biodiversity.



- By protecting communities and subdivisions using mechanical treatments & prescribed fires in advance of wildfires, IC's may be able to utilize a wider range of suppression tactics.

Notes: _____

Landscape Management and Fire Management Units



Landscape Management and Fire Management Units

CENTRAL PINE BARRENS STATISTICS			
	Acres	% of CPB	
TOTAL ACRES	106372		
PUBLICLY OWNED LAND	60503	57%	
CORE PRESERVATION AREA	57892	54%	
COMPATIBLE GROWTH AREA	48480	46%	
	Acres	% of CPB	Public Land Acres
Rocky Point FMU	15714	15%	10142
Brookhaven FMU	30245	28%	15285
Manorville-Calverton FMU	34343	32%	17979
Dwarf Pines FMU	11343	11%	6654
Southampton FMU	14727	14%	10443

Notes: _____

Rx Burn Planning:

Landscape vs. Target

LANDSCAPE BURN PLAN FEATURES / BENEFITS:

- Burn Plans Are Written for Burn Units 100 to 2000 Acres with Multiple Similar Burn Blocks
- Burn Plans Are Written for 10 Year Shelf Life
- Reduces Amount of Redundant Burn Plan Reviews For Burns in Similar Habitats
- Allows for Modification of Plans vs Rewrite For Fuels Changes or Additional Prescribed Burn Targets Within the Landscape
- Creates Prescribed Fire Enhancement Zones that Reduce Need For Mechanical Pre-Treatments
- An Example is the Sarnoff West Rx Plan Under Development for 1100 acres in Sarnoff SF

TARGET BURN PLAN FEATURES / DRAWBACKS:



LANDSCAPE BURN PLAN FEATURES / BENEFITS:

Central Pine Barrens Joint Planning & Policy Commission
624 Old Riverhead Rd, Westhampton Beach, NY 11978



Prescribed Fire Plan

Fresh Pond Wildfire Drill Zone

Otis Pike Pine Barrens State Forest
Riverhead, NY

November 2020-Dec 2030



TARGET BURN PLAN FEATURES / DRAWBACKS:

- Used For Specific Projects that Do Not Fall Within a Larger Landscape
- Can Address Special Needs That Are Not Part of a Landscape Such as Protecting a Historic Structure
- Requires A Lot of Work For Writing and Review for Small Acreage Results
- An Example is the Fresh Pond Wildfire Drill Zone Prescribed Burn Plan That is Training Specific

Notes:

Desired Ecological Outcomes:

Prescribed Burn Priorities Include Actions To:

- Improve forest health
- Strengthen ecosystem resiliency to pests and disease
- Increase native species diversity
- Ensure suitable habitat for rare and endangered flora and fauna
- Retain species-specific fire adaptations

Implementation Strategies:

Prescribed Burn Strategies Include:

- Sites with approved burn plans
- Prescribed fire enhancement zones
- Areas mechanically treated for Southern Pine Beetle control and forest health improvement
- Sites with needs for actions to protect communities, subdivisions and businesses from wildfire threats
- Sites where there have been recent wildfires or regularly burned grasslands that can be anchor points for additional prescribed fire use
- Places where fire will benefit forest health and/or control invasive flora and fauna and places for wildland fire training
- Grassland and other ecosystem priorities
- Systems that are in maintenance condition (i.e. sites which have limited-to-no need for intensive restoration or do not require pre-fire vegetation treatments)

Notes: _____

Summary Facts:

Identified Priority Areas and Goals

Comprehensive RX Plan Summary

Ten Year Plan 2021-2030

Priority Areas and Acreage Goals

- 18 Projects
- Total area covered by RX plans (Forest and Grasslands) = 8017 acres
 - This totals 7.5% of the 106,372 CPB
- Expected Rx Annual Forest Acres within the 8017 treatment zone = 300 acres
 - Total 3000 Forest Acres treated in 10 years = 2.8% of the 106,372 CPB
 - Treated per year = 0.28% of the 106,372 CPB
- Although We Use The Word “Landscape”, The Intent in Forested Areas is to Burn Small Areas on any Burn Day
- With Regular Spring / Late Summer / Fall Burning 300 Acres Per Year is the Goal
- The Keech Byram Drought Index is Used in Prescriptions to Determine Daily Acreage Goals and Reduce Smoke Output
- Initially Most Burning will Consist of Patch Burning vs Broadcast Burning
- Detailed Interdisciplinary Collaborative Work During the Burn Planning Process Pre-Identifies Risks & Mitigations for Natural & Cultural Resources

Notes: _____
