

Final Scope
for the
**Supplemental Draft Generic Environmental Impact Statement for the
Proposed Amendments to Chapters 4, 5 and 6 of the Central Pine
Barrens Comprehensive Land Use Plan**

Central Pine Barrens Joint Planning and Policy Commission
624 Old Riverhead Road
Westhampton Beach, NY 11978

PROJECT LOCATION:	Central Pine Barrens Area - within the Towns of Brookhaven, Southampton and Riverhead and Villages of Quogue and Westhampton Beach
LEAD AGENCY &: PREPARER:	Central Pine Barrens Joint Planning & Policy Commission 624 Old Riverhead Road Westhampton Beach, NY 11978
CONTACT:	John W. Pavacic, Executive Director (631) 288-1079
DATE OF FINAL SCOPE PREPARATION:	February 17, 2016

Proposed Final Scope

This document is the Final Scope for the Central Pine Barrens Comprehensive Land Use Plan Amendments Supplemental Draft Generic Environmental Impact Statement (SDGEIS). This Final Scope has been prepared to describe the proposed action, present the proposed framework for the EIS analysis, and discuss the procedures to be followed in the preparation of the EIS.

A Draft Scope was prepared in accordance with the State Environmental Quality Review Act (SEQRA) procedures and was distributed for public review. A 45-day public comment period on the Draft Scope was provided, commencing on September 16, 2015 and ending on November 2, 2015. Written comment letters were received and relevant comments were incorporated herein. Subsequent to the close of the comment period, the lead agency oversaw preparation of this Final Scope. The EIS will be prepared in accordance with this Final Scope.

Description of the Proposed Action

Pursuant to the Long Island Pine Barrens Protection Act of 1993 (the “Act”), as embodied in Article 57 of the New York State Environmental Conservation Law, the Central Pine Barrens Comprehensive Land Use Plan (the “CLUP”) was required to help ensure the protection of the high quality groundwater and surface water resources found within the Central Pine Barrens as well as to help ensure the preservation of the ecology and ecosystems of the Central Pine Barrens while balancing public and private interests in development.

The Act created the Central Pine Barrens Joint Planning and Policy Commission, a five member voting body comprised of a State Governor’s representative, the County Executive of Suffolk County, and the three Supervisors of the Towns of Brookhaven, Riverhead and Southampton with jurisdiction to review activities in the Central Pine Barrens (see Figure 1 for a general map of the Central Pine Barrens). This jurisdictional authority is initially established in ECL Article 57 Section § 57-0119, entitled “Central Pine Barrens joint planning and policy commission,” subsection 1, which states:

“It is hereby found, determined and declared that the Long Island Central Pine Barrens area is a major resource area of statewide significance where the hydrological and ecological integrity is endangered; that a public entity representative of town, county and state government is necessary and appropriate to plan, manage and oversee land use within the Central Pine Barrens area...”

Article 57 of the Environmental Conservation Law requires that the Central Pine Barrens Commission review the effectiveness of the CLUP every five years and, if appropriate, to

identify areas in which amendments are required and then develop and adopt such amendments. Article 57, Section 57-0121 entitled Central Pine Barrens Comprehensive Land Use Plan; Interim Regulations, paragraph 13 states:

“Not less than once every five years after the land use plan has become effective, the commission shall review and, if appropriate, make amendments to the land use plan and update the generic environmental impact statement. Within each such period, the commission shall hold a public hearing and shall receive comments on the effectiveness of implementation of the land use plan. Not less than thirty days before voting on an amendment to the land use plan, the commission shall publish notice thereof in a newspaper of general circulation in the Central Pine Barrens area.”

During the last such review of the CLUP, in 2005, there were a number of areas in the CLUP that were identified as needing attention in order to enhance and increase effectiveness. Accordingly, through this process a number of amendments were identified in the land use portions of the CLUP, Chapters 4, 5 and 6, especially to strengthen and clarify the provisions contained therein. These amendments were initially developed and characterized by staff of and personnel within the Towns of Brookhaven, Riverhead and Southampton; the County of Suffolk; the New York State Department of Environmental Conservation and the Commission; Commission Members and Designated Representatives and members of the Central Pine Barrens Advisory Committee. Subsequently, amendments were drafted, reworked and refined through a process of review by these agencies, organizations and individuals up until the present time. The action proposed herein consists of the adoption of these amendments to the Central Pine Barrens Comprehensive Land Use Plan.

The Proposed CLUP Amendments in Chapter 4, Review Procedures, specify coordination between agencies, clarify definitions based on past resolutions and policies of the Commission, update Critical Resource Areas, as applicable, and refine as well as add definitions of projects that achieve the threshold for a Development of Regional Significance.

The Proposed CLUP Amendments in Chapter 5, Standards and Guidelines for Land Use, reorganize, consolidate and combine similar provisions that relate to County or State codes or regulations such as Suffolk County Department of Health Services codes pertaining to sanitary code compliance and industrial materials storage and New York State Department of Environmental Conservation regulations pertaining to wetlands, buffers and species protection. One significant proposed amendment to Chapter 5 pertains to vegetation clearing, open space and habitat protection. This includes refinements to the existing clearing requirements and methodologies for prioritizing which areas of a project site should be set aside as open space. Additional provisions include a requirement to set aside open space on project sites that are already cleared of existing natural vegetation. The

proposed CLUP Amendments to Chapter 5 also allow for self-heal restoration and implementation of self-heal recovery on a project site. Open space design and implementation are described and illustrated in a guidance document included in the proposed amendments entitled, “Draft Conservation Design and Open Space Management Manual for Development Projects in the Central Pine Barrens” and requirements in regard to native and non-native revegetation are also included. Other amendments relate to current region-wide initiatives and consistency with existing practices in the Central Pine Barrens Towns and Villages and in SEQRA including provisions for invasive species management, dark skies compliance, and protection of scenic resources.

The Proposed CLUP Amendments in Chapter 6, Pine Barrens Credit Program, include references to provisions that apply to lands in the newly-expanded Core Preservation Area in the Carmans River Watershed pursuant to the State Legislature’s 2013 amendment to New York State Environmental Conservation Law Article 57, including the method of allocating Pine Barrens Credits. Other proposed amendments codify past practices of the Commission while others refine Pine Barrens Credit redemptions policies, the Letter of Interpretation process, Pine Barrens Credit transaction requirements and the issuance of Pine Barrens Credits when a land use violation exists.

Potentially Significant Adverse Impacts Identified Both in the Positive Declaration and as a Result of Consultation with other Involved Agencies and the Public:

Pursuant to subdivision 617.7(a) of the SEQRA regulations, the Commission has determined that the proposed action may include the potential for at least one significant adverse environmental impact potentially occurring due to:

- A potential substantial change in the use or intensity of use of land including agricultural, open space or recreational resources, or in the capacity to support existing uses;
- The potential creation of a material conflict with a community's current plans or goals as officially approved or adopted.

Extent and Quality of Information Needed to Adequately Address Each Impact, including Identification of Relevant Existing Information, and Required New Information, including the Required Methodologies for Obtaining New Information:

Any and all available tools, information, data, and technologies that are relevant and apply to the analysis of the proposed action will be used in preparation of the EIS. These data may include, but are not limited to: updated census data, Geographic Information System

technology using aerial orthophotography, tax maps, ecological, water resource, topographical, transportation, assessor layers and databases from the Towns of Brookhaven, Riverhead and Southampton; the County of Suffolk; the Commission, the New York State GIS Clearinghouse, the New York State Department of Environmental Conservation, and the New York State Office of Parks, Recreation and Historic Preservation Cultural Resource Information System. The analysis will include an assessment of development and land use changes that have occurred since the adoption of the CLUP in 1995.

In addition, it has been determined that the following information will also be required in order to adequately assess each potential impact:

- Information on additional applications that would now be subject to review due to the proposed changes in the definition of Developments of Regional Significance.
- Estimates of the total acreage of property that could be cleared for development under the existing and proposed CLUP standards.
- Description and estimates of existing cleared areas that will require revegetation under the proposed CLUP amendments.
- Information regarding parcels that may be impacted by the proposed new or expanded non-disturbance buffers, as in the case of wetlands or surface waters which are otherwise unregulated.

Initial Identification of Mitigation Measures:

- Summary of mitigation measures in 1995 GEIS and 1995 Findings applicable to and required for the proposed action, including those applicable to Land Use, Zoning and Public Policy; Ecological Resources, Water Resources, Soils and Topography and Scenic, Visual and Cultural Resources
- Any additional mitigation measures identified and which will be analyzed in regard to Land Use, Zoning and Public Policy; Ecological Resources, Water Resources, Soils and Topography and Scenic, Visual and Cultural Resources

Identification of the Information/Data that Should be Included in an Appendix Rather than the Body of the Draft GEIS:

Studies, reports and information considered and relied on in preparing the EIS will be

provided. Correspondence with others in preparation of the EIS will be provided. Documents prepared by other agencies that contain information relevant to and updated with analyses that pertain to the Central Pine Barrens will be reviewed including but not limited to:

- 1995 Central Pine Barrens Comprehensive Land Use Plan, Volumes 1 and II, and the corresponding GEIS and SEQRA Findings, and references used in their preparation
- New York State Environmental Conservation Law Article 57
- Local Code Amendments and Implementation of the CLUP (also listed below in the Outline of the Proposed SDGEIS):

- *TOWN OF BROOKHAVEN CHAPTER 85 ARTICLE XXV*
- *TOWN OF RIVERHEAD CHAPTER 108 ARTICLE XXV*
- *TOWN OF SOUTHAMPTON CHAPTER 330 ARTICLE XXIV*
- *VILLAGE OF QUOGUE ZONING CODE*
- *VILLAGE OF WESTHAMPTON BEACH ZONING CODE*

- Applicable Agency plans (also listed below in the Outline of the Proposed SDGEIS):

- Town of Brookhaven Plans

- *Carmans River Conservation and Management Plan and Generic Environmental Impact Statement (2013)*
- *County Road 51 Corridor Land Use Plan (2007)*
- *Gordon Heights Land Use Plan (2011)*
- *Middle Country Road Land Use Plan for Coram, Middle Island and Ridge (2006)*
- *Route 25A Mount Sinai to Wading River Land Use Plan (2012)*
- *Town of Brookhaven Comprehensive Plan (1996)*

- Town of Riverhead Plans

- *Enterprise Park at Calverton Subdivision Map and Urban Renewal Plan (draft)*
- *Naval Weapons Industrial Reserve Plant, Calverton (1997)*
- *Route 25A – Wading River Planning and Zoning Report (2012)*
- *Town of Riverhead Comprehensive Plan (2003)*

- Town of Southampton Plans

- *400+ Sustainability Element Update to the Town of Southampton Comprehensive Plan (2012)*
- *Draft Feasibility Study Map and Plan for Flanders Riverside, Suffolk*

County, New York Flanders Riverside Corridor Sewering Feasibility Study (2013)

- *East Quogue Land Plan and Generic Environmental Impact Statement (2008)*
- *Eastport/Speonk/Remsenburg/Westhampton Area Study (2004)*
- *Flanders-Northampton-Riverside Revitalization Study (2004)*
- *Hampton Bays Corridor Strategic Plan, Cumulative Impact of Buildout Study and Generic Environmental Impact Statement (2013)*
- *Southampton Tomorrow Comprehensive Plan Update Implementation Strategies, Southampton, New York (1999)*
- *Gabreski Airport Planned Development District Master Plan (2007)*
- *Riverside Revitalization Action Plan and Generic Environmental Impact Statement (2015)*
- *Riverside Urban Renewal Plan (2009)*
- *Town of Southampton Community Preservation Fund Community Preservation Project Plan (2005)*
- *Town of Southampton Wireless Communications Plan (2007)*

➤ **Suffolk County Plans**

- *Agricultural and Farmland Protection Plan (1996)*
- *Gabreski Airport Proposed Land Use Plan (2007)*
- *Comprehensive Master Plan 2035*
- *Suffolk County Airport Study (1990)*
- *Suffolk County Comprehensive Water Resources Management Plan (2015)*
- *Suffolk County Transfer of Development Rights Study (2014)*

➤ **New York State Programs**

- *New York State Department of Environmental Conservation Wild, Scenic and Recreational Rivers Program*
- *New York State Department of Environmental Conservation Freshwater Wetlands Program*
- *New York State Department of Environmental Conservation Tidal Wetlands Program*
- *New York State Department of Environmental Conservation Endangered Species Program*
- *New York State Department of Environmental Conservation Protection of Waters Program*
- *New York State Coastal Zone Management Act and Program*

Prominent Issues Raised During Scoping and Determined to be Not Relevant or Not Environmentally-Significant or that have been Adequately Addressed in a Prior Environmental Review:

During the comment period on the Draft Scope, the Commission received comments from entities including:

- Town of Brookhaven letters dated September 29, 2015 and October 7, 2015
- Long Island Builders Institutes letter dated October 27, 2015
- Miller Place Civic Association, Inc. letter dated November 2015

The comments primarily apply to the actual proposed amendments, not the scoping document; thus, the comments will be addressed in the EIS. In addition, both the Town of Brookhaven and the Long Island Builders Institute expressed concern about the potential economic impact of the proposed CLUP amendments. Although a full economic impact analysis is not required by SEQRA and is beyond the scope required for an EIS, this matter will be brought before the Commission for consideration and a determination as to whether or not to conduct a separate economic impact analysis to coincide with the SDGEIS.

Outline of the Content of the Proposed SDGEIS:

Cover

Table of Contents

Chapter 1: Executive Summary

- Brief description of the action
 - Proposed amendments to Chapters 4, 5 and 6 of the CLUP
 - Reference 1995 GEIS
- Significant, beneficial and adverse impacts
- Mitigation measures proposed
 - Summary of mitigation measures in 1995 GEIS applicable to and required for proposed action
 - Summary of new mitigation measures for proposed action
- Alternatives considered
 - Summary of alternatives in 1995 GEIS applicable to proposed action
 - Summary of additional alternatives considered for proposed action
- Matters to be decided (approvals, etc.)

Chapter 2: Proposed Action

- Introduction
 - Long Island Pine Barrens Protection Act
 - Requirement for 5-year review of effectiveness
 - Current CLUP implementation
 - REFERENCE 1995 GEIS
 - CLUP IMPLEMENTATION FROM 1995 TO PRESENT
- Supplemental Draft Generic EIS Study Area Boundaries, Central Pine Barrens region
 - 1995-era boundaries and additions between 1995 and 2012
 - Post-2012 changes and expansions of boundaries (Carmans River Watershed)
- Proposed Amendments to Chapters 4, 5, and 6 of the 1995 Central Pine Barrens Comprehensive Land Use Plan

- **Chapter 4: Review Procedures and Jurisdiction**
 - 4.2 Intent
 - 4.3 Definitions
 - 4.3.2 Plan
 - 4.3.5.1 Interpretation of “nondevelopment” provision 57-0107(13)(xiii)
 - 4.3.9 Project Site
 - 4.3.10 Self-Heal Restoration, Self Restoration
 - 4.3.11 Tall Structure
 - 4.5.2 Development located within the Compatible Growth Area which does not conform to the standards contained in Volume 1, Chapter 5 of the Plan (“nonconforming development”)
 - 4.5.2.1 Nonconforming development: Filing of an application
 - 4.5.2.3 Nonconforming development: Completeness determination deadline
 - 4.5.3 Development located within the Compatible Growth Area which has been subjected to a petition by the Commission pursuant to ECL Section 57-0123(2) (“assertion development”)
 - 4.5.3.2 Assertion development: Hearings and assertion of review jurisdiction
 - 4.5.3.3 Assertion development: Review standards
 - 4.5.4 Development located within the Compatible Growth Area which is also located within a Critical Resource Area (“CRA development”)
 - 4.5.4.1 CRA development: Definition of Critical Resource Areas
 - 4.5.4.1.1 Brookhaven Town Critical Resource Areas
 - Figure 4-1 depicts existing Critical Resource Areas in the Town of Brookhaven.
 - 4.5.4.1.2 Southampton Town Critical Resource Areas
 - Figure 4-4: Critical Resource Areas in the Southampton Town CGA
 - 4.5.4.2 CRA development: Review standards
 - 4.5.4.3 CRA development: Application and hearing
 - 4.5.4.4 CRA development: Decision on the application
 - 4.5.4.5 CRA development: Default decisions
 - 4.5.5 Developments of Regional Significance located within the Compatible Growth Area (“DRS development”)
 - 4.5.5.1 DRS development: Definition of a Development of Regional Significance
 - 4.5.5.2 DRS development: Review standards
 - 4.5.5.3 DRS development: Application and hearing
 - 4.5.5.4 DRS development: Decision on the application
 - 4.5.5.5 DRS development: Default decisions

- **Chapter 5: Standards and Guidelines for Land Use**
 - 5.1 *Central Pine Barrens overall area*
 - 5.3.1 *Applicability and other policies*
 - 5.3.3 *Intent and Compatible Growth Area standards*
 - 5.3.3.1 *Sanitary waste, nitrate-nitrogen and other chemicals of concern*
 - 5.3.3.1.1 *Suffolk County Sanitary Code Article 6 compliance*
 - 5.3.3.1.2 *Sewage treatment plant discharge*
 - 5.3.3.1.3 *Suffolk County Sanitary Code Articles 7 and 12 compliance*
 - 5.3.3.1.4 *Commercial and industrial compliance with the Suffolk County Sanitary Code*
 - 5.3.3.1.3 *Nitrate-nitrogen goal*
 - 5.3.3.1.5 *Nitrate-nitrogen goal*
 - 5.3.3.2 *Other chemical contaminants of concern Reserved*
 - 5.3.3.2.1 *Suffolk County Sanitary Code Articles 7 and 12 compliance*
 - 5.3.3.3 *Wellhead and groundwater protection*
 - 5.3.3.3.1 *Significant discharges and public supply well locations*
 - 5.3.3.4 *Wetlands, and surface waters and stormwater runoff*
 - 5.3.3.4.1 *Nondisturbance buffers*
 - 5.3.3.4.2 *Buffer delineations, covenants and conservation easements*
 - 5.3.3.4.2 *Wild, Scenic and Recreational Rivers Act compliance*
 - 5.3.3.4.3 *Wild, Scenic and Recreational Rivers Act compliance*
 - 5.3.3.4.3 *Stormwater recharge*
 - 5.3.3.4.4 *Reduction of Impervious Surfaces*
 - 5.3.3.4.5 *Natural recharge, drainage, and ponds*
 - 5.3.3.4.4 *Additional nondisturbance buffers*
 - 5.3.3.4.6 *Soil erosion and stormwater runoff control during construction*
 - 5.3.3.6 *Natural vegetation and plant habitat Coordinated design for open space, habitat and soil protection*
 - 5.3.3.6.1 *Vegetation clearance limits*
 - 5.3.3.6.1.1
 - 5.3.3.6.1.2
 - 5.3.3.6.1.3
 - 5.3.3.6.1.4
 - 5.3.3.6.1.5
 - 5.3.3.6.1.6
 - 5.3.3.6.1.7
 - 5.3.3.6.2 *Open space standard requirement, unfragmented open space and habitat*
 - 5.3.3.6.2.3 *Unfragmented open space and habitat*
 - 5.3.3.6.3 *Fertilizer-dependent vegetation limit*
 - 5.3.3.6.4 *Native plantings*
 - *Figure 5-2: Planting recommendations*
 - 5.3.3.6.5 *Receiving entity and protection for open space areas*
 - 5.3.3.6.6 *Buffer delineations, covenants and conservation easements*
 - 5.3.3.6.7 *Invasive plant species mitigation*

- 5.3.3.6.7.1 *Invasive Species Mitigation*
- *Figure 5-1: Clearance and Open Space Standards*
- 5.3.3.7 *Species and communities of special concern Protection and conservation of species and communities*
- 5.3.3.7.1 *Special species and ecological communities*
- 5.3.3.7.2 *Bird conservation and protection*
- 5.3.3.8 *Soils*
- 5.3.3.9 *Coordinated design for open space management.*
- 5.3.3.9.1 *Receiving entity for open space dedications*
- 5.3.3.9.2 *Clustering*
- 5.3.3.9.3 *Protection of dedicated open space*
- 5.3.3.9 *Dark sky compliance.*
- 5.3.3.9.1 *Light pollution prevention*
- 5.3.3.10 *Agriculture and horticulture*
- 5.3.3.10.1 *Best management practices*
- 5.3.3.11 *Scenic, historic and cultural resources*
- 5.3.3.11.1 *Tall structures and scenic resources*
- 5.3.3.11.2 *Cultural resource consideration*
- 5.3.3.11.3 *Inclusion of cultural resources in applications*
- 5.3.3.11.4 *Protection of scenic and recreational resources*
- 5.3.3.11.5 *Roadside design and management*
- *Figure 5-2: Scenic Roads and Areas in the Central Pine Barrens*
- 5.3.3.12 *Commercial and industrial development*
- 5.3.3.12.1 *Commercial and industrial compliance with Suffolk County Sanitary Code*
- 5.3.3.12 (Reserved)
- *Appendix A: Draft Conservation Design and Open Space Management Manual for Development Projects in the Central Pine Barrens*
- *Appendix B: Figure 5-1: Clearance and Open Space Standards*
- *Appendix C: Commission General Planting Recommendations and List of Acceptable and Unacceptable Plants*

- ***Chapter 6: Pine Barrens Credit Program***

- 6.3 *Allocation of Pine Barrens Credits*
- 6.3.1 *Method of allocation*
- 6.4.2.1 *Brookhaven Pine Barrens Credit Program overview*
- 6.4.2.2 *Brookhaven “As of Right” Residential Overlay District specifications*
- 6.4.2.2.4 *Brookhaven criteria*
- 6.4.2.3 *Innovative strategies for the redemption of Brookhaven Pine Barrens Credits*
- 6.4.2.4.1 *Transfers from Hydrogeologic Zone 3 to Hydrogeologic Zone 6*
- *Figure 6-3: Brookhaven Residential Overlay District as of right*

receiving area map

- *Figure 6-4: Riverhead as of right receiving area map - Area “A” Calverton*
- *Figure 6-4 (p.2): Riverhead as of right receiving area map - Area “B” West Main Street*
- *Figure 6-7: Southampton as of right receiving area map*
- *Figure 6-7 (p.2): Southampton as of right receiving area map*
- *Figure 6-7 (p.3): Southampton as of right receiving area map*
- *Figure 6-7 (p.4): Southampton as of right receiving area map*
- *Figure 6-7 (p.5): Southampton as of right receiving area map*
- *6.4.5 Suffolk County Sanitary Code*
- *6.5.4 Intermunicipal redemptions of Pine Barrens Credits*
- *6.5.5 Permanency of Pine Barrens Credit Redemptions*
- *6.5.6 Redemption of Pine Barrens Credits within the Core Preservation Area prohibited*
- *6.7.3 Detail of Step 1: Obtaining a Letter of Interpretation*
 - *6.7.3.4*
 - *6.7.3.5*
 - *6.7.4.3*
- *6.7.6.6 Issuance of a full Pine Barrens Credit for certain roadfront parcels*
- *6.7.6.8 Issuance of Pine Barrens Credits to a Parcel with a Land Use Violation*
- *6.7.6.9 Transactions involving Pine Barrens Credits*

- **Purpose, Need, and Benefits**

This section will include will include a discussion as to how the proposed amendments advance the goals for CLUP described in ECL Article 57, Section 57-0121, entitled “Central Pine Barrens comprehensive land use plan; interim regulations,” including how the proposed amendments enhance the CLUP’s ability to, for the entire Central Pine Barrens:

- “(a) protect, preserve and enhance the functional integrity of the Pine Barrens ecosystem and the significant natural resources, including plant and animal populations and communities, thereof;*
- (b) protect the quality of surface water and groundwater;*
- (c) discourage piecemeal and scattered development;*
- (d) promote active and passive recreational and environmental educational uses that are consistent with the land use plan; and*
- (e) accommodate development, in a manner consistent with the long term integrity of the Pine Barrens ecosystem and to ensure that the pattern of development is compact, efficient and orderly.*

and in regard to the Compatible Growth Area:

- “(a) preserve and maintain the essential character of the existing Pine Barrens environment, including plant and animal species indigenous thereto and habitats therefor;*
- (b) protect the quality of surface and groundwaters;*
- (c) discourage piecemeal and scattered development;*
- (d) encourage appropriate patterns of compatible residential, commercial, agricultural, and industrial development in order to accommodate regional growth influences in an orderly way while protecting the Pine Barrens environment from the individual and cumulative adverse impacts thereof;*
- (e) accommodate a portion of development redirected from the preservation area. Such development may be redirected across municipal boundaries; and*
- (f) allow appropriate growth consistent with the natural resource goals pursuant to this title.”*

This section will also provide and described the statutory authority in ECL Article 57 for each of the proposed amendments.

- Required Approvals and Regulatory Framework
 - Central Pine Barrens Joint Planning and Policy Commission

 - Local Code Amendments and implementation of the CLUP
 - *TOWN OF BROOKHAVEN CHAPTER 85 ARTICLE XXV*
 - *TOWN OF RIVERHEAD CHAPTER 108 ARTICLE XXV*
 - *TOWN OF SOUTHAMPTON CHAPTER 330 ARTICLE XXIV*
 - *VILLAGE OF QUOGUE ZONING CODE*
 - *VILLAGE OF WESTHAMPTON BEACH ZONING CODE*

 - SEQRA – Lead Agency and Involved Agencies

Chapter 3: Land Use, Zoning, and Public Policy

- Land Use and Zoning Conditions
 - *Land use in the CGA and Core*
 - SUMMARY FROM 1995 GEIS AND INCORPORATION BY REFERENCE OF 1995 GEIS LAND USE AND ZONING SECTION AND VOLUME 2 OF THE CLUP
 - LAND USE SINCE THE ADOPTION OF THE 1995 CLUP

 - Demographics including population and housing in the Central Pine Barrens
 - SUMMARY FROM 1995 GEIS
 - DEMOGRAPHICS SINCE ADOPTION OF THE 1995 CLUP

- Zoning Districts in the CGA and Core
 - SUMMARY FROM 1995 GEIS
 - ZONING SINCE ADOPTION OF THE 1995 CLUP

- Summary and review of land use plans adopted after the adoption of the 1995 Central Pine Barrens Comprehensive Land Use Plan and their relatedness to the CLUP Amendments
 - BROOKHAVEN
 - *Carmans River Conservation and Management Plan and Generic Environmental Impact Statement (2013)*
 - *County Road 51 Corridor Land Use Plan (2007)*
 - *Gordon Heights Land Use Plan (2011)*
 - *Middle Country Road Land Use Plan for Coram, Middle Island and Ridge (2006)*
 - *Route 25A Mount Sinai to Wading River Land Use Plan (2012)*
 - *Town of Brookhaven Comprehensive Plan (1996)*

 - RIVERHEAD
 - *Enterprise Park at Calverton Subdivision Map and Urban Renewal Plan (draft)*
 - *Naval Weapons Industrial Reserve Plant, Calverton (1997)*
 - *Route 25A – Wading River Planning and Zoning Report (2012)*
 - *Town of Riverhead Comprehensive Plan (2003)*

 - SOUTHAMPTON
 - *400+ Sustainability Element Update to the Town of Southampton Comprehensive Plan (2012)*
 - *Draft Feasibility Study Map and Plan for Flanders Riverside, Suffolk County, New York Flanders Riverside Corridor Sewering Feasibility Study (2013)*
 - *East Quogue Land Plan and Generic Environmental Impact Statement (2008)*
 - *Eastport/Speonk/Remsenburg/Westhampton Area Study (2004)*
 - *Flanders-Northampton-Riverside Revitalization Study (2004)*
 - *Hampton Bays Corridor Strategic Plan, Cumulative Impact of Buildout Study and Generic Environmental Impact Statement (2013)*
 - *Southampton Tomorrow Comprehensive Plan Update Implementation Strategies, Southampton, New York (1999)*
 - *Gabreski Airport Planned Development District Master Plan (2007)*
 - *Riverside Revitalization Action Plan and Generic Environmental Impact Statement (2015)*
 - *Riverside Urban Renewal Plan (2009)*

- *Town of Southampton Community Preservation Fund Community Preservation Project Plan (2005)*
- *Town of Southampton Wireless Communications Plan (2007)*
- SUFFOLK COUNTY
 - *Agricultural and Farmland Protection Plan (1996)*
 - *Gabreski Airport Proposed Land Use Plan (2007)*
 - *Comprehensive Master Plan 2035*
 - *Suffolk County Airport Study (1990)*
 - *Suffolk County Comprehensive Water Resources Management Plan (2015)*
 - *Suffolk County Transfer of Development Rights Study (2014)*
- NEW YORK STATE DEPARTMENT OF ENVIRONMENTAL CONSERVATION
 - *Wild, Scenic and Recreational Rivers*
- NEW YORK STATE DEPARTMENT OF STATE
 - *New York State Coastal Zone Management Act and Program*
- Community Facilities and Services
 - SUMMARY OF COMMUNITY FACILITIES AND SERVICES FROM 1995 GEIS
 - COMMUNITY FACILITIES AND SERVICES DEVELOPED SINCE THE 1995 GEIS
 - *Educational Facilities including School Districts*
 - *police protection*
 - *Fire protection*
 - *health care facilities*
 - *Social Services*
 - *Recreational Facilities*
 - *Utilities*
 - *Public water Supply*
 - *Solid Waste Disposal*
 - *Sewage Treatment Facilities*
- Transportation
 - SUMMARY OF TRANSPORTATION FROM 1995 GEIS
 - *Existing Roadway Network and Parameters*
 - *Public Transportation*
 - *Other Transportation Services*
 - TRANSPORTATION DEVELOPED SINCE THE 1995 GEIS
- Probable Impacts of the Proposed Project on Land Use and Zoning
 - Impacts on Land Use
 - CRITICAL RESOURCE AREAS
 - *Summary of impacts on Land Use from 1995 GEIS*

- *Impacts of the proposed amendments on Land Use*
- DEVELOPMENTS OF REGIONAL SIGNIFICANCE
 - *Summary of impacts on Land Use from 1995 GEIS*
 - *Impacts of the proposed amendments on Land Use*
 - Non residential floor area
 - Residential
 - Mixed Use
 - Water Table Exposure
 - *Conditions, criteria and thresholds established in the 1995 GEIS and adopted in the 1995 Findings related to the impacts of the proposed CLUP amendments on Land Use*
- CHAPTER 5 STANDARDS AND GUIDELINES FOR LAND USE AMENDMENTS
 - *Summary of impacts from 1995 GEIS on Land Use*
 - *Impacts of the proposed amendments on Land Use*
 - *Conditions, criteria and thresholds established in the 1995 GEIS and adopted in the 1995 Findings related to the impacts of the proposed CLUP amendments on Land Use*
- CHAPTER 6 PINE BARRENS CREDIT PROGRAM AMENDMENTS
 - *Summary of impacts from 1995 GEIS on Land Use*
 - *Impacts of the proposed amendments on Land Use*
 - Permanency of PBC redemptions
 - Pine Barrens Credit redemptions in the Core
 - Land use violations and issuance of Pine Barrens Credits
 - Maximum fractional allocations and transactions
 - Other impacts
 - *Conditions, criteria and thresholds established in the 1995 GEIS and adopted in the 1995 Findings related to the impacts of the proposed CLUP amendments on Land Use*
- DEVELOPABLE LAND IN THE CGA
 - *Summary of impacts from 1995 GEIS on Land Use*
 - *Impacts of the proposed amendments on Land Use*
 - *Conditions, criteria and thresholds established in the 1995 GEIS and adopted in the 1995 Findings related to the impacts of the proposed CLUP amendments on Land Use*
- DEVELOPABLE LAND IN THE CORE
 - *Summary of impacts from 1995 GEIS on Land Use*
 - *Impacts of the proposed amendments on Land Use*
 - *Conditions, criteria and thresholds established in the 1995 GEIS and adopted in the 1995 Findings related to the impacts of the proposed CLUP amendments on Land Use*
- PROJECTED INCREASES IN POPULATION AND HOUSING
 - *Summary of impacts from 1995 GEIS on Land Use*
 - *Impacts of the proposed amendments on Land Use*
 - *Conditions, criteria and thresholds established in the 1995 GEIS*

and adopted in the 1995 Findings related to the impacts of the proposed CLUP amendments on Land Use

– ADOPTED LAND USE PLANS

- *Summary of impacts from 1995 GEIS on Land Use*
- *Impacts of the proposed amendments on Land Use*
- *Conditions, criteria and thresholds established in the 1995 GEIS and adopted in the 1995 Findings related to the impacts of the proposed CLUP amendments on Land Use*

– ZONING IMPACTS

- *Summary of impacts from 1995 GEIS on Land Use*
- *Impacts of the proposed amendments on Land Use*
- *Conditions, criteria and thresholds established in the 1995 GEIS and adopted in the 1995 Findings related to the impacts of the proposed CLUP amendments on Land Use*

– OTHER IMPACTS ON LAND USE

- *Summary of impacts from 1995 GEIS on Land Use*
- *Impacts of the proposed amendments on Land Use*
- *Conditions, criteria and thresholds established in the 1995 GEIS and adopted in the 1995 Findings related to the impacts of the proposed CLUP amendments on Land Use*

• *Impacts on Community Services*

- *Summary of impacts from 1995 GEIS on Land Use*
- *Impacts of the proposed amendments on Land Use*
- *Conditions, criteria and thresholds established in the 1995 GEIS and adopted in the 1995 Findings related to the impacts of the proposed CLUP amendments on Land Use*

• *Other Potential Environmental Impacts*

• Mitigation Measures

- Mitigation measures and alternatives related to Land Use recommended in the 1995 GEIS and 1995 Findings which will be required for the proposed CLUP amendments
- Any additional mitigation measures to be analyzed in regard to Land Use

• Alternatives: No Action

Chapter 4: Ecological Resources

• Ecological Resources

- Summary and incorporation by reference of 1995 GEIS Ecological Resources section and Volume 2 of the CLUP

• Probable Impacts of the Proposed CLUP Amendments

- *Chapter 4 Review Procedures and Jurisdiction Amendments*
 - DEFINE PROJECT SITE

- *Summary of impacts on Ecological Resources from 1995 GEIS*
 - *Impacts of the proposed amendments on Ecological Resources*
 - *Conditions, criteria and thresholds established in the 1995 GEIS and adopted in the 1995 Findings related to the impacts on Ecological Resources of the proposed CLUP amendments*
- OTHER CHAPTER 4 AMENDMENT IMPACTS
 - *Summary of impacts on Ecological Resources from 1995 GEIS*
 - *Impacts of the proposed amendments on Ecological Resources*
 - *Conditions, criteria and thresholds established in the 1995 GEIS and adopted in the 1995 Findings related to the impacts on Ecological Resources of the proposed CLUP amendments*
- *Chapter 5 Standards and Guidelines Amendments*
 - NONDISTURBANCE BUFFERS
 - *Summary of impacts on Ecological Resources from 1995 GEIS*
 - *Impacts of the proposed amendments on Ecological Resources*
 - *Conditions, criteria and thresholds established in the 1995 GEIS and adopted in the 1995 Findings related to the impacts on Ecological Resources of the proposed CLUP amendments*
 - COORDINATED DESIGN FOR OPEN SPACE, HABITAT, AND SOIL PROTECTION
 - *Summary of impacts on Ecological Resources from 1995 GEIS*
 - *Impacts of the proposed amendments on Ecological Resources*
 - Clearing and open space standards
 - Self heal restoration
 - Conservation design and open space management manual for development projects in the Central Pine Barrens
 - General planting recommendations
 - Protection of steep slopes
 - Preservation of natural, historic, scenic, and agricultural resources
 - Invasive Species Mitigation
 - *Conditions, criteria and thresholds established in the 1995 GEIS and adopted in the 1995 Findings related to the impacts on Ecological Resources of the proposed CLUP amendments*
 - BIRD CONSERVATION AND PROTECTION GUIDELINE
 - *Summary of impacts on Ecological Resources from 1995 GEIS*
 - *Impacts of the proposed amendments on Ecological Resources*
 - *Conditions, criteria and thresholds established in the 1995 GEIS and adopted in the 1995 Findings related to the impacts on Ecological Resources of the proposed CLUP amendments*
- *Impacts on Critical Resource Areas*
 - SUMMARY OF IMPACTS ON ECOLOGICAL RESOURCES FROM 1995 GEIS
 - IMPACTS OF THE PROPOSED AMENDMENTS ON ECOLOGICAL RESOURCES
 - CONDITIONS, CRITERIA AND THRESHOLDS ESTABLISHED IN THE 1995 GEIS AND ADOPTED IN THE 1995 FINDINGS RELATED TO THE IMPACTS ON ECOLOGICAL RESOURCES OF THE PROPOSED CLUP AMENDMENTS

- Mitigation Measures
 - Mitigation measures and alternatives pertaining to Ecological Resources recommended in the 1995 GEIS and 1995 Findings which will be required for the proposed CLUP amendments
 - Any additional mitigation measures to be analyzed
- Alternatives: No Action

Chapter 5: Water Resources

- Water Resources
 - Summary and incorporation by reference of 1995 GEIS Water Resources section and Volume 2 of the CLUP
 - Water Resources since the adoption of the 1995 CLUP including groundwater and surface water quality per the Suffolk County Comprehensive Water Resources Management Plan (2015)
- Probable Impacts of the Proposed Project
 - *Chapter 4 Review Procedures and Jurisdiction Amendments*
 - DEVELOPMENTS OF REGIONAL SIGNIFICANCE, INCLUDING SURFACE WATER EXPOSURE
 - *Summary of impacts on Water Resources from 1995 GEIS*
 - *Impacts of the proposed amendments on Water Resources*
 - *Conditions, criteria and thresholds established in the 1995 GEIS and adopted in the 1995 Findings related to the impacts on Water Resources of the proposed CLUP amendments*
 - OTHER POTENTIAL IMPACTS
 - *Chapter 5 Standards and Guidelines Amendments*
 - SANITARY WASTE, NITRATE-NITROGEN, AND OTHER CHEMICALS OF CONCERN
 - *Summary of impacts on Water Resources from 1995 GEIS*
 - *Impacts of the proposed amendments on Water Resources*
 - *Conditions, criteria and thresholds established in the 1995 GEIS and adopted in the 1995 Findings related to the impacts on Water Resources of the proposed CLUP amendments*
 - WELLHEAD AND GROUNDWATER PROTECTION
 - *Summary of impacts on Water Resources from 1995 GEIS*
 - *Impacts of the proposed amendments on Water Resources*
 - *Conditions, criteria and thresholds established in the 1995 GEIS and adopted in the 1995 Findings related to the impacts on Water Resources of the proposed CLUP amendments*
 - WETLANDS, SURFACE WATERS AND STORMWATER RUNOFF

- *Summary of impacts on Water Resources from 1995 GEIS*
 - *Impacts of the proposed amendments on Water Resources*
 - *Conditions, criteria and thresholds established in the 1995 GEIS and adopted in the 1995 Findings related to the impacts on Water Resources of the proposed CLUP amendments*
- *Consistency with the Suffolk County Comprehensive Water Resources Management Plan*
- Mitigation Measures
 - Mitigation measures and alternatives related to Water Resources recommended in the 1995 GEIS and 1995 Findings which will be required for the proposed CLUP amendments
 - Any additional mitigation measures to be analyzed
- Alternatives: No Action

Chapter 6: Geological Resources

- Soils and Topography
 - Summary and incorporation by reference of 1995 GEIS Soils and Topography section and Volume 2 of the CLUP
- Probable Impacts of the Proposed Project
 - *Chapter 4 Review Procedures and Jurisdiction Amendments*
 - CRITICAL RESOURCE AREAS
 - *Summary of impacts on Soils and Topography from 1995 GEIS*
 - *Impacts of the proposed amendments on Soils and Topography*
 - *Conditions, criteria and thresholds established in the 1995 GEIS and adopted in the 1995 Findings related to the impacts on Soils and Topography of the proposed CLUP amendments*
 - DEVELOPMENTS OF REGIONAL SIGNIFICANCE, INCLUDING SURFACE WATER EXPOSURE
 - *Summary of impacts on Soils and Topography from 1995 GEIS*
 - *Impacts of the proposed amendments on Soils and Topography*
 - *Conditions, criteria and thresholds established in the 1995 GEIS and adopted in the 1995 Findings related to the impacts on Soils and Topography of the proposed CLUP amendments*
 - OTHER POTENTIAL IMPACTS
 - *Chapter 5 Standards and Guidelines Amendments*
 - NONDISTURBANCE BUFFERS
 - *Summary of impacts on Soils and Topography from 1995 GEIS*
 - *Impacts of the proposed amendments on Soils and Topography*
 - *Conditions, criteria and thresholds established in the 1995 GEIS and adopted in the 1995 Findings related to the impacts on Soils*

and Topography of the proposed CLUP amendments

- COORDINATED DESIGN FOR OPEN SPACE, HABITAT, AND SOIL PROTECTION
 - *Summary of impacts on Soils and Topography from 1995 GEIS*
 - *Impacts of the proposed amendments on Soils and Topography*
 - Clearing and open space standards
 - Self heal restoration
 - Conservation design and open space management manual for development projects in the Central Pine Barrens
 - Preservation of natural, historic, scenic, and agricultural resources
 - Invasive Species Mitigation
 - CONDITIONS, CRITERIA AND THRESHOLDS ESTABLISHED IN THE 1995 GEIS AND ADOPTED IN THE 1995 FINDINGS RELATED TO THE IMPACTS ON SOILS AND TOPOGRAPHY OF THE PROPOSED CLUP AMENDMENTS
- Mitigation Measures
 - Mitigation measures and alternatives related to Soils and Topography recommended in the 1995 GEIS and 1995 Findings which will be required for the proposed CLUP amendments
 - Any additional mitigation measures to be analyzed
 - Alternatives: No Action

Chapter 7: Scenic and Cultural Resources

- **Scenic, Visual and Cultural Resources**
 - Summary and incorporation by reference of 1995 GEIS Scenic and Cultural Resources section and Volume 2 of the CLUP
 - SCENIC ROADS IN THE CENTRAL PINE BARRENS (FIGURE 5-2)
 - SCENIC AREAS IN THE CENTRAL PINE BARRENS (FIGURE 5-2)
 - CULTURAL RESOURCES
 - REGULATORY REVIEW
- Probable Impacts of the Proposed Project
 - Chapter 4 Critical Resource Areas
 - SUMMARY OF IMPACTS ON SCENIC, VISUAL AND CULTURAL RESOURCES FROM 1995 GEIS
 - IMPACTS OF THE PROPOSED AMENDMENTS ON SCENIC, VISUAL AND CULTURAL RESOURCES CONDITIONS, CRITERIA AND THRESHOLDS ESTABLISHED IN THE 1995 GEIS AND ADOPTED IN THE 1995 FINDINGS RELATED TO THE IMPACTS ON SCENIC, VISUAL AND CULTURAL RESOURCES OF THE PROPOSED CLUP AMENDMENTS
 - Chapter 5 Standards and Guidelines Amendments

- DARK SKY COMPLIANCE
 - *Summary of impacts on Scenic, Visual and Cultural Resources from 1995 GEIS*
 - *Impacts of the proposed amendments on Scenic, Visual and Cultural Resources*
 - *Conditions, criteria and thresholds established in the 1995 GEIS and adopted in the 1995 Findings related to the impacts on Scenic, Visual and Cultural Resources of the proposed CLUP amendments*
- TALL STRUCTURES
 - *Summary of impacts on Scenic, Visual and Cultural Resources from 1995 GEIS*
 - *Impacts of the proposed amendments on Scenic, Visual and Cultural Resources*
 - *Conditions, criteria and thresholds established in the 1995 GEIS and adopted in the 1995 Findings related to the impacts on Scenic, Visual and Cultural Resources of the proposed CLUP amendments*
- Mitigation Measures
 - Mitigation measures and alternatives related to Scenic, Visual and Cultural Resources recommended in the 1995 GEIS and 1995 Findings which will be required for the proposed CLUP amendments
 - Any additional mitigation measures to be analyzed
- Alternatives: No Action

Chapter 8: Adverse Environmental Impacts that Cannot Be Avoided

Chapter 9: Irreversible and Irretrievable Commitment of Resources

Chapter 10: Growth-Inducing Aspects

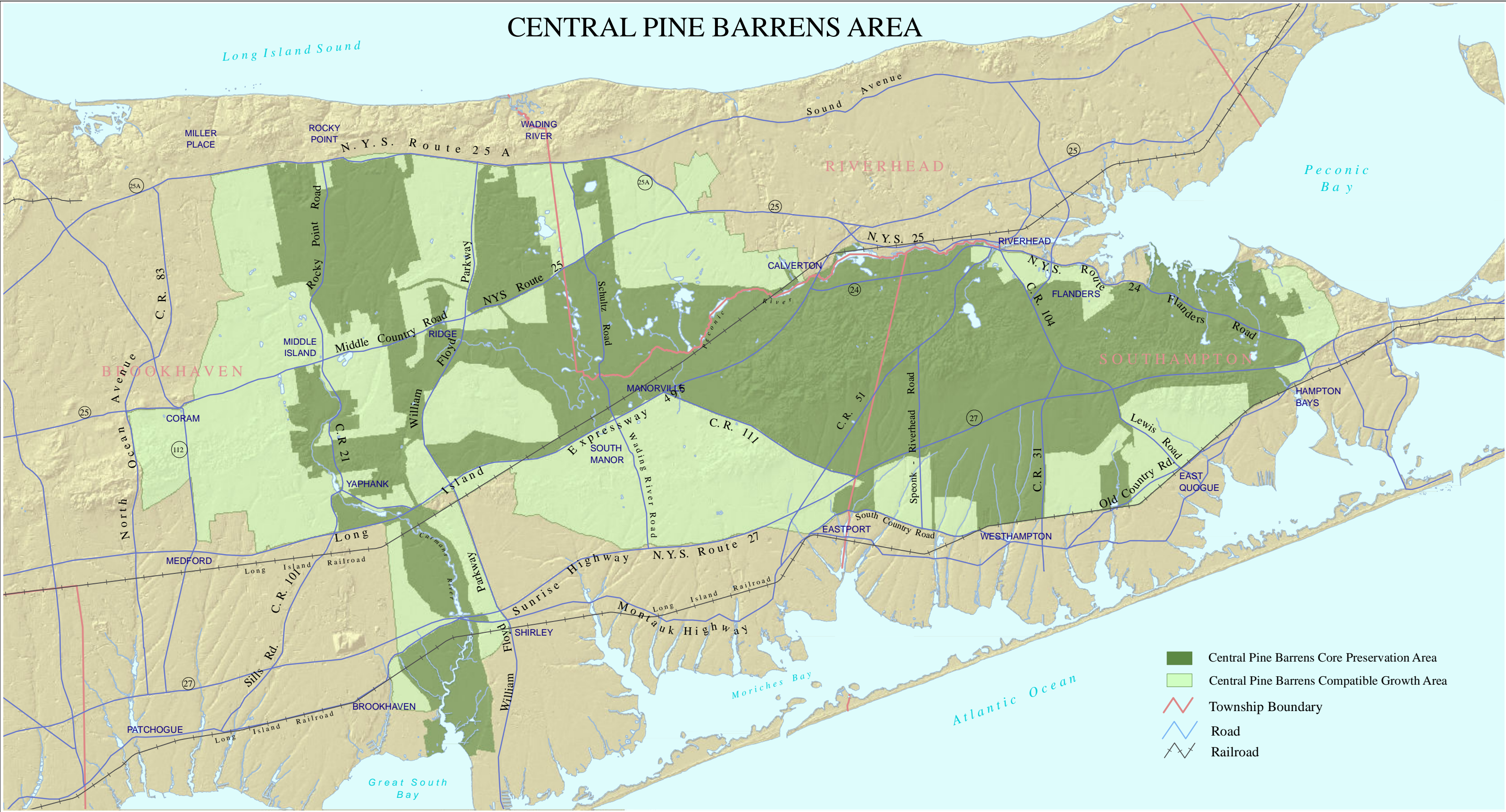
Chapter 11: Effects on the Use and Conservation of Energy

Chapter 12: Impacts on and Consistency with the Central Pine Barrens Comprehensive Land Use Plan Ratified and Adopted Pursuant to Article 57 of the Environmental Conservation Law

References

Appendices

CENTRAL PINE BARRENS AREA



- Central Pine Barrens Core Preservation Area
- Central Pine Barrens Compatible Growth Area
- Township Boundary
- Road
- Railroad



Note: This map is intended for general reference only and is not to be used for surveying, legal interpretation of jurisdictional boundaries, or other precise purposes. Information shown on this map may contain defects, errors, and/or omissions. Refer to NYS ECL Article 57-0107 (10), (11), and (12) for the official description of the Central Pine Barrens boundaries. Prepared by Commission Staff (ac), January 25, 2016.

CENTRAL PINE BARRENS JOINT PLANNING AND POLICY COMMISSION

- Carrie Meek Gallagher, Chairwoman
- Steven Bellone, Member
- Edward P. Romaine, Member
- Jay H. Schneiderman, Member
- Sean M. Walter, Member

