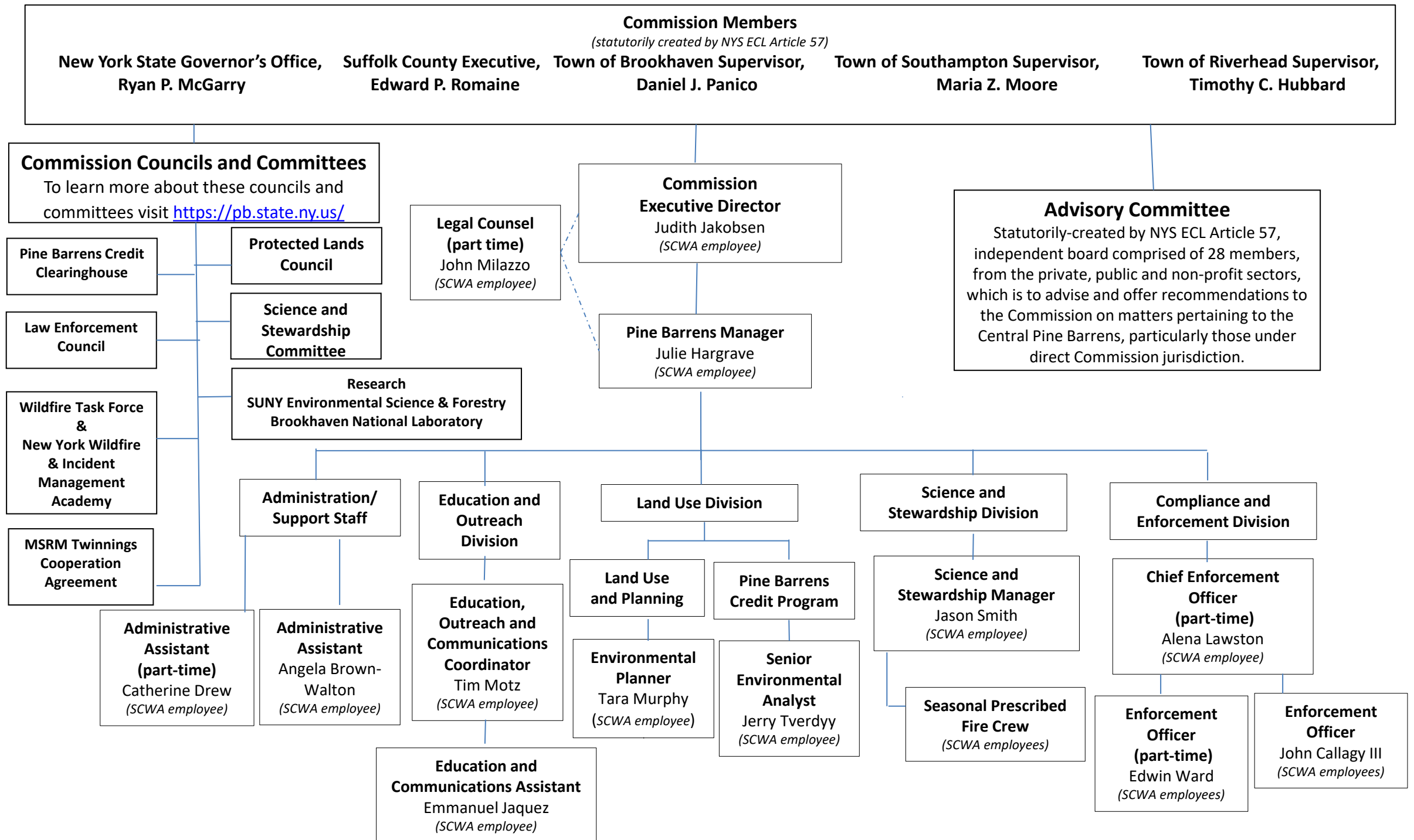


# Central Pine Barrens Joint Planning and Policy Commission

(Created pursuant to NYS ECL Article 57 - Long Island Pine Barrens Protection Act)



## Suffolk County Water Authority (SCWA)

Public authority which provides staff, office space and support services, via a long-term contract with the Commission. Support services include accounting and fiscal services, computer and GIS services, and operational administration.