

**Central Pine Barrens
Joint Planning and Policy Commission**

*"Celebrating the 20 Year Anniversary
of the Long Island Pine Barrens Protection Act"*



April 1, 2013 through December 31, 2013 Report



Office Location & Contact Information

624 Old Riverhead Road (CR 31)

Westhampton Beach, NY 11978

Voice: 631-288-1079

Fax: 631-288-1367

www.pb.state.ny.us

info@pb.state.ny.us

Central Pine Barrens Joint Planning and Policy Commission

Peter A. Scully, Commission Chair, Governor's Appointee,
and Regional Director, NYS Dept. of Environmental Conservation

Edward P. Romaine, Member and Town Supervisor

Designated Representatives: Brenda Prusinowski, Tullio Bertolli and William Faulk

Sean M. Walter, Member and Riverhead Town Supervisor

Designated Representatives: Jill Lewis, Daniel McCormick and Richard Hanley

Anna E. Throne-Holst, Member and Southampton Town Supervisor

Designated Representatives: Kyle Collins and Martin Shea

Steven Bellone, Member and Suffolk County Executive

Designated Representatives: Sarah Lansdale, Andrew Freleng and Janet Longo

Staff

(from the Suffolk County Water Authority)

John W. Pavacic, Executive Director

Judy Jakobsen, Policy and Planning Manager

Ann Carter, Science and Stewardship Coordinator

Katherine Delligatti, Assistant Academy and Administrative Specialist

Julie Hargrave, Senior Environmental Planner

Lawrence Hynes, Compliance and Enforcement Coordinator

John Milazzo, Legal Counsel

Melissa Griffiths Parrott, Education and Outreach Coordinator

Carol Sholl-Ostrowski, Secretary

Jerry Tverdyy, Environmental Analyst

REPORT CONTENT

This document contains activity reports on the following Central Pine Barrens matters which includes the following committees, councils and divisions for 2013.

Pine Barrens Advisory Committee

Protected Lands Council

Land Use and Planning

Science and Stewardship

Compliance and Enforcement

Pine Barrens Law Enforcement Council

Wildfire Task Force

Pine Barrens Credit Program and Clearinghouse Report

Environmental Education and Outreach

Research

Summary Chart for Litigation

Staff and Contact Information

Central Pine Barrens Accomplishments in the Last 20 Years prepared March 8, 2013

- 1993: Adoption and Enactment of the Long Island Pine Barrens Protection Act in July, including creation of Central Pine Barrens (CPB) area, Core Preservation Area, Compatible Growth Area (CGA), Commission, Advisory Committee, statutory milestones, goals of the Act, and development restrictions
- 1993: Agreement with the Suffolk County Water Authority to provide technical and administrative staff and support
- 1995: Adoption of the Central Pine Barrens Comprehensive Land Use Plan in June.



Barren and Waste Land Exhibit—Suffolk County Historical Society

- 1995: Amendments to Town Zoning Codes (Brookhaven, Riverhead and Southampton) to implement the Land Use Plan provisions.
- 1995: Establishment and Implementation of the Pine Barrens Credit Program to transfer development rights from the Core to the CGA and other areas of Suffolk County and the PBC Clearinghouse Board of Advisors. As of March 8, 2013, 806 Core parcels have been preserved through the Program. These 806 parcels constitute nearly 1,905 acres or 3.46% of the statutorily defined 55,000-acre Core Preservation Area.
- 1995: Creation of the Pine Barrens Law Enforcement Council (LEC) and the Pine Barrens Protected Lands Council (PLC) through the Plan.
- 1995: Rocky Point and Sunrise (Westhampton) wildfires occur leading to establishment of the Central Pine Barrens Wildfire Task Force (WTF).
- 1996: First technical amendment to the Plan
- 1996: Amendment of the Act to approve the Core parcel residential exemption list recommended in the original Plan
- 1996: Commencement of the Law Enforcement Council's Abandoned Vehicle Helicopter Airlift Program with the NY Army National Guard's Aviation Support Unit at Islip MacArthur Airport.
- 1996: Establishment of the Pine Barrens Research Forum
- 1997: PLC's first major field project, a two day cleanup of the Hot Water Street and Toppings Path areas in Manorville and Calverton
- 1997: Conclusion of Commission's first land use violation case (which was in the Core Preservation Area) with a stipulation agreement for a fine and dedicated trail easement.
- 1997: First prescribed burn in the Central Pine Barrens, at the NYS DEC's Rocky Point Natural Resource Management Area, conducted by NYS Forest Rangers
- 1998: Addition of the Wertheim National Wildlife Refuge to both the Central Pine Barrens and the Core Preservation Area.

- 1999: Creation and establishment of NY Wildfire and Incident Management Academy (NYWIMA) by the Commission. Has trained 1,000s from US and abroad.
- 1999: Adoption of the Central Pine Barrens Fire Management Plan.
- 1999: Purchase and installation of the Commission’s fire weather station and signing of an agreement with SCWA to house the station at a SCWA wellfield. The Commission assumed the responsibility for preparing the daily fire danger rating report that is broadcasted by Suffolk County FRES to the local fire departments.
- 1999: Anti-dumping program and 1-877-BARRENS hotline are introduced.
- 2000-2003: PLC conducts “5S Process”, a consensus effort to identify major conservation “systems”, “stresses”, “sources of stress”, and other CPB resource attributes
- 2001: Second amendment of both the Plan and the Act to approve an expanded Core parcel residential exemption list.
- 2001: First “reverse auction” held by Clearinghouse to purchase Pine Barrens Credits from private landowners.
- 2001: Approval of an international “twinning” agreement with Migliarino - San Rossore - Massaciuccoli Regional Park of Tuscany, Italy.
- 2003: Amendment of Pine Barrens law to provide both civil and criminal enforcement penalties for violations.
- 2003: Commission assists with the formation of the Foundation for Ecological Research in the Northeast (FERN) as a private 501(c)(3) foundation to assist Upton Reserve and facilitate scientific research in the greater CPB and Pine Barrens Maritime Reserve areas.
- 2004: Adoption of a Land Use Complaint Investigation Protocol.
- 2004: Creation and distribution, by the LEC, of a Central Pine Barrens Law Enforcement Handbook to coordinate enforcement response in the Central Pine Barrens. Handbook summarizes all applicable local and State laws in the Central Pine Barrens, location maps, law enforcement agency directory and boundaries of various jurisdictions and was updated from 2011-2012.
- 2004 - 2005: Plan amendment to change law to restricting government entities to only compelling public need permits in the Core area (i.e., excludes from receiving “extraordinary hardships” in the Core). Pine barrens law subsequently amended.
- 2005: Purchase of 300 acres in dwarf pine barrens by State and County is assisted by Pine Barrens Credit Program.
- 2005: 1000th acre is placed under a Pine Barrens Credit Program conservation easement
- 2005: Commission completes first Staffing and Administrative Needs Report to guide future focus, expansion, budget and hiring.
- 2006: Commission hires first dedicated personnel for Land Use Planning
- 2006: SCWA receives American Water Works Association’s Source Water Protection Award, based in part upon its involvement with protecting the Central Pine Barrens.
- 2006: Total monetary value of Pine Barrens Credit sales from 1995 to date exceeds the \$20 million level.
- 2006: First region-wide Invasive Plants Assessment summer field project conducted.
- 2006: ATV Damage Mitigation Project starts in Flanders-Riverside-Northampton area.

- 2006: Commission cosponsors “Regional Planning Comes of Age Conference” in NJ commemorating 25th anniversary of NJ Pinelands Comprehensive Management Plan.
- 2007: Commission hires first dedicated personnel for Compliance and Enforcement, and for Environmental Education and Outreach.
- 2007: Pine Barrens Credit Program sales exceed \$25,000,000 since inception of Program.
- 2008: Commission partners with Long Island Maritime Museum to sponsor first year of the Barrens To Bay summer discovery program for elementary school students.
- 2008: Dedication of Dwarf Pine Plain Trail informational kiosks in Westhampton.
- 2008: Commission adopts the Fire Tower Project Feasibility Report and authorizes preparation of next design steps.
- 2008: Commission initiates a Committee Structure and Needs study through the AC.
- 2008: Boy Scouts enrolls the 403 acre Camp Wauwepex Scout Camp (Schiff Scout Reserve) in the Pine Barrens Credit Program, placing a conservation easement on the largest single tax parcel to date to be enrolled in the Program.
- 2008 to Present:
 - Creation of separate staff divisions to target specific Commission responsibilities:
 - Education and Outreach
 - Compliance and Enforcement
 - Science and Stewardship
 - Credit Program
 - Land Use and Development
 - Annual Discovery Day developed, conducted annually to introduce public to Central Pine Barrens and natural resources, reaching 100s of people every year.
 - Continued to operate the Pine Barrens-themed “Barrens to Bay” Summer Camp now through Wertheim National Wildlife Refuge.
 - Dedicated the Dwarf Pine Plains trail system to Edwin “Buzz” Schwenk, a local leader who helped to establish the Central Pine Barrens.
 - Following the April 2012 wildfires, established and implemented a comprehensive plan to address Wildfire Response, Forest Management and Prescribed Fire and Response.
 - In 2012, developed and issued an RFP for Comprehensive Ecological Services to undertake Ecological Inventories and Assessment, Prescribed Fire, Invasive Species and Grassland Management projects on CPB public lands. Contractor selected in December of 2012 and contract executed in March of 2013.
 - Series of CLUP Amendments adopted by the Commission in 2012 comprised of “ministerial amendments” and amendments to Chapter 6 (Pine Barrens Credit Program) which entailed adoption of a Pine Barrens Credit Allocation Formula for properties zoned non-residential (e.g. commercial and industrial).
 - Commission commenced review of a comprehensive set of CLUP amendments in 2010 and is continuing the review process into 2013. These amendments cover Upgrading of Guidelines to Standards, Vegetation Clearing Standards, Open Space, Habitat and Conservation Design Standards, Fire Hazard Mitigation Standard, Soils and Topography, Developments of Regional Significance, Traffic, Sewage

Treatment Plants, Wetlands, Surface Waters, Stormwater Runoff, Wellhead and Groundwater Protection and Scenic and Cultural Resources.

- In 2012, commenced planning for and development of an Upper Carmans River Watershed trail system.
- Developed K-12 Pine Barrens Curricula, correlated to NY Learning Standards.
- Participated in a number of prescribed fire operations.
- Developed and implemented cooperative agreement with the Civil Air Patrol to conduct aerial operations in support of ecological surveillance, wildfire management and compliance monitoring.
- Developed and established a Science and Stewardship Committee, comprised primarily of land-managing agencies, to help oversee development and implementation of stewardship programs.
- Conducted aerial Forest Health Monitoring Program in cooperation with NYSDEC which started in 2011.
- Developed Forest Health and Wetland Monitoring Protocols.
- Conducted an Oak Mortality Assessment Program in 2011 and 2012 investigating causes of and trends indicated as a result of a massive die-off of native oak trees.
- Commission became member of New York Firewise Council in 2011, hosted its annual meeting in 2012 and has actively participated in development and implementing Firewise programs to reduce hazards in wildfire-prone areas.
- Created a wildfire hazard prevention and mitigation partnership in 2012 with various fire districts through outreach programs and events. Also commenced development of neighborhood and community Firewise planning in conjunction with Towns of Brookhaven, Riverhead and Southampton.
- Developed and sustained partnerships with federal, state and local agencies/organizations on a regular basis to create environmental programming.
- Created model student citizen science programs:
 - * “A Day in the Life of the Carmans River” in 2012, a one-day secondary school student scientific research, data collection and monitoring event conducted at various locations along the Carmans River.
 - * Worked closely with high school students and BNL, using its National Synchrotron Light Source (NSLS) to determine health of CPB by examining metals in the Pine Barrens waters, soils and animals.
 - * Work with high school students, using molecular ecology, to determine through DNA similarity of species we share with our park “Twin” in Pisa.
 - * Via Pine Barrens research forum, host a Student Science Symposium which provides opportunities for high schools students to annually present their research and data to other participating schools and our “Twinned” school in Pisa.
- Since 1995, Commission has coordinated land use and SEQRA reviews on various development projects along with enforcement activities with the three Towns.
- From 2011 through 2012, the Commission participated in and assisted with the development of a Carmans River Watershed Protection and Management Plan effort conducted by the Town of Brookhaven. The effort brought attention to and focused on the need for additional measures to be undertaken in order to protect the Carmans River, one of the two major rivers located in the Central Pine Barrens (the other being the Peconic River).

Central Pine Barrens Joint Policy and Planning Commission Advisory Committee

Chair: Jeffrey Szabo, Chief Executive Officer, Suffolk County Water Authority

Vice Chair: Richard L. Amper, Executive Director, Long Island Pine Barrens Society

The Advisory Committee (AC) was created by NYS ECL Article 57 ("Pine Barrens Law") which specified the 24 member organizations by name and allowed up to 28 members. The committee membership is represented by a balance of environmental, civic and builder groups whose purpose is to actively assist and advise the Central Pine Barrens Joint Planning and Policy Commission ("the Commission") in the implementation and revision of the Central Pine Barrens Comprehensive Land Use Plan.

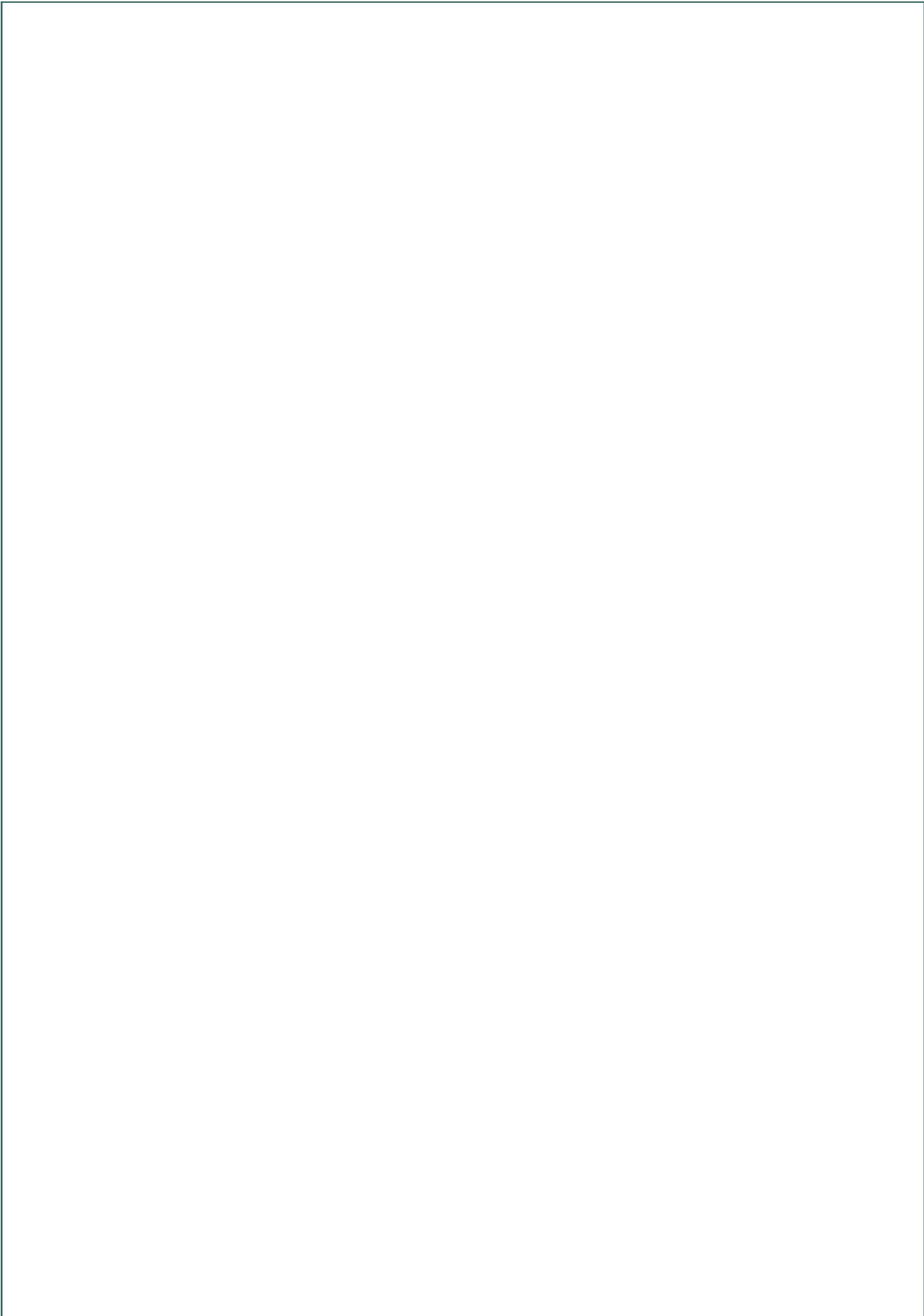
During 2013, the Advisory Committee actively engaged in various activities, in accordance with its "advisory" role specified by the Pine Barrens Law, to assist the Commission in its efforts. It held one formal meeting in 2013 to discuss the upcoming 20 year anniversary in July of the signing of the Long Island Pine Barrens Protection Act into law. Major accomplishments that have been achieved by the Commission were noted along with what should be the continuing role of the AC in its efforts to support and advise the Commission over the next five years.

Key points included:

- The importance of continuing the effort to educate the public about the origin of Suffolk County's drinking water and the need to protect the Pine Barrens through existing and new public events and featured articles in local newspapers.
- Newer members of government who may not be aware of the legislation to protect the Pine Barrens may need to be educated and that the 20th Year Anniversary poses an opportunity to reenergize interest in the initiatives related to protecting the Pine Barrens.
- There should be a discussion on how future illegal activities resulting from unanticipated events such as Superstorm Sandy should be managed and contingency planning should begin between the Commission, law enforcement agencies, towns and other involved agencies.



In addition, the AC continued to provide its input to the Commission on its Comprehensive Land Use Plan Amendments related to restoration projects and the use of a self-heal approach instead of replanting affected areas.



Protected Lands Council

Tom Casey, Chair and Tim Green Vice Chair

The Protected Lands Council (PLC) is an association of agencies, organizations, and individuals, who share a common interest in advancing the protection, preservation, and restoration of natural, cultural, and scenic resources in the Central Pine Barrens region, while promoting compatible public use and enjoyment of protected lands in a manner that is consistent with ensuring that the resource's essential values and integrity are preserved for the public trust, present and future.



Under the direction of the Commission, the PLC's stewardship work is focused on well over 60,000 acres of public lands in the Central Pine Barrens, and covers a broad array of topics, including, but certainly not limited to habitat protection, ecology, restoration of historic structures, trails, recreational uses such as hiking, bird watching, and hunting, signage, invasive species, park planning, damage caused by illegal ATV use, and dumping.

Over the years since its establishment by the Central Pine Barrens Comprehensive Land Use Plan, the PLC's focus, meeting frequency, and structure have evolved. Currently the PLC holds four meetings per year at various locations across the Central Pine Barrens, with additional field work sessions scheduled, as needed. The PLC's Chair and Vice Chair are appointed by the Commission and PLC work is supported by the Commission's Science and Stewardship Division. Meeting agendas include a roundtable session; a forum where land managers, public lands user groups, environmental groups, and others provide updates and exchange ideas on topics of mutual interest.

The 2013 PLC activities are summarized in the following annual report.

Protected Lands Council

Meetings

The Protected Lands Council conducted four formal meetings in 2013:

March 5: Wertheim National Wildlife Refuge

September 10: Quogue Wildlife Refuge

June 4: Pine Barrens Trails Information Center

December 3: Southaven County Park

Activities

Ray Corwin Trail

During 2013 the PLC conducted several outings in Lustgarten, Fox Lair and Warbler Woods along the Ray Corwin Trail to GPS routes and check connections between existing paths. The PLC is very close to finalizing the locations for the hiking and equestrian trails.

ATV Mitigation

The PLC has continued periodic checks of the perimeter of the Flanders Pine Barrens area as part of the ongoing ATV mitigation project, in conjunction with the Law Enforcement Council. In some areas, the barriers which were erected have been effective in reducing or eliminating illegal entry.

As a result of the survey of access points performed, Commission staff notified SC Parks and LIPA, and their staffs installed and repaired barriers at the north end of Spinney Road and both ends of the power line right of way, at Pleasure Drive & Bellows Pond Rd.



Dedication of the Raymond P. Corwin Pine Barrens Trails Center, December 5, 2013.



Greenbelt volunteers rehabilitating El's Trail

Other places remain sources of ongoing problems, especially the several access areas along the east-west power line right of way that has become a highway for ATVs. Currently, an economical, effective solution to this problem has not been identified. The relatively thin understory in some parts of the Pine Barrens allows ATVs to circumvent barriers, to the point where extending them would merely cause additional destruction.

The PLC also discussed expanding the scope of the ATV mitigation work to bring additional attention to the Warbler Woods-Fox Lair area, where ATV, motorbike and 4x4 use is rampant.

Agency Work

All of the land-managing agencies did many months of yeomen's work maintaining and rehabilitating parks in the aftermath of Superstorm Sandy.

A footbridge near Wading River Manor Road, a key passage on the Paumanok Path, had partially burned in the 2012 wildfires, and Suffolk County Parks was able to restore it a year after it was damaged. Given Superstorm Sandy, a record blizzard and severe budget cuts, it's a wonder the work was done as promptly as it was.

There were many improvements to important cultural and scenic resources that help to make the Pine Barrens look and feel more like the preserve that it is. The unsightly chain link fence in front of the Swezey-Avey House in the heart of the Yaphank Historic District has been removed, as recommended by the PLC, and great progress has been made in restoring the 1750 Davis Town Meeting House in Coram and the 1790 Homan-Gerard House in Yaphank.

Volunteer Maintenance

The Long Island Greenbelt Trail Conference continues regular maintenance of the Paumanok Path, the Brookhaven Trail, the hiking trails in Manorville Hills County Park, and the paths behind the Trails Information Center in Manorville. On September 28 a large number of Greenbelt volunteers performed rehabilitation work at the Trails Center, spreading and grooming several tons of rock dust on part of the handicapped-accessible trail. The group also conducts year-round hikes for the general public in the Pine Barrens.

There are also individuals who perform valuable trail maintenance work, two examples being Mindy Block, who regularly works in the Whiskey Road area at Rocky Point Preserve, and Jim Hintze, who roams Manorville Hills.



Regrowth along the Paumanok Path 18 months after the 2012 Crescent Bow Fire.

The Nassau-Suffolk Horsemen's Association reported that it focused on clearing a trail in the Lustgarten property through an Adopt a Natural Resource Agreement with DEC for Rocky Point, and establishing an equestrian route to parallel the Ray Corwin Hiking Trail.

The Concerned Mountain Bicyclists of Long Island continues their maintenance of 64 miles of trails in the Pine Barrens. Its members also function as a trail patrol, reporting on illegal activity on preserved land.

CLIMB's President, Michael Vitti, notes that the statewide value placed on volunteer hours is almost \$19 and that the organization logged slightly over 3,000 hours of maintenance in 2013. Coupled with the Greenbelt Conference's work, the value of these efforts is in excess of \$100,000.

Fire Tower:

The saddest events of the year were the passing of Larry and Eva Paul, two long-time members of the PLC and LEC who volunteered much time, talent and hard work to the betterment of the Pine Barrens. Afterwards, the PLC discussed the feasibility of advancing his idea of restoring a fire lookout tower to Long Island as an educational and historical exhibit. In September, the PLC presented to the Commission reasons for continuing Larry Paul's work. Considerable interest was expressed in this potential tower project, although it will possibly require the formation of a "Friends" group and fundraising.

Goals for 2014:

In last year's report the PLC listed its goals for 2013 as:

- 1) Work with the land-managing agencies to open the Ray Corwin Trail;
- 2) Explore a future expansion of the trail southward through Southaven County Park;
- 3) Consider further steps to reduce or eliminate illegal off-road riding in Warbler Woods;
- 4) Continue our ATV Mitigation work in Flanders;
- 5) Revisit the Carmans River Headwaters Preserve to consider means of better securing it and opening improved access for the public.

At the close of 2013, it is noted that the first goal is reaching fruition, while the others remain as ongoing work. In addition, the PLC in 2014 hopes to:

- 1) Explore some means of closing off a problematic ATV access into Manorville Hills at Halsey Manor Road and the L.I.E.;
- 2) Discuss ways of enhancing the visitor experience at the Pine Barrens Trails Center;
- 3) Assist, if possible, those who wish to tackle the fire tower project.

There was a large turnout for the PLC's December, 2013 meeting and it is hoped that this level of involvement continues in 2014. The Protected Lands Council has to be an excellent forum for a cooperative exchange of knowledge and problem-solving ideas among agencies and user groups. In December 2013, the Commission reappointed Tom Casey as PLC Chair and appointed Heather Amster of the NYS DEC as Vice Chair.

The Commission and its staff are grateful to all who have participated in the PLC's work and to those who attend meetings regularly. Special recognition is warranted for Tim Green, of Brookhaven Laboratory, for serving as Vice Chair during the past several years.

2014 Meeting Schedule:

March 4, SCWA facility in Coram

September 2, Wertheim National Wildlife Refuge

June 3, Southaven County Park

December 2, Southaven County Park

The minutes of the PLC meetings are posted on the Commission's website (www.pb.state.ny.us).

Land Use and Planning Division

The purpose of the Land Use Division is to ensure the use of land within the Central Pine Barrens area conforms to New York State Environmental Conservation Law (ECL) Article 57 and the Commission's Comprehensive Land Use Plan (the "CLUP") and to guide its development. The Division provides both long range and current planning on a regional basis for the Central Pine Barrens area. Other services the Division provides are:

- Review and processing of Commission permit applications.
- Review of Town and other agency land use management plans for conformance to ECL Article 57 and the Plan.
- Prepare State Environmental Review Act (SEQRA) documents and perform SEQRA coordination with other agencies.
- Research and draft land use policy to guide the Commission.
- Provide recommendations to Commission Councils, Advisory Committee, and Towns on land use matters and policy under the Commission's purview.
- Support the Compliance and Enforcement Division with the investigation of land use incidents and violations, and the monitoring and review of Commission permit conditions, and conservation easements for conformance.
- Serve as the liaison to the public and government agencies on inquiries related to land use and development in the Central Pine Barrens and jurisdictional inquiries.
- Prepare Comprehensive Land Use Plan amendments.
- Communicate with and meets with applicants.
- Prepare materials including Staff Reports and Exhibits for public hearings on hardship waiver applications.
- Follow-up on compliance with the conditions of approval for permits granted by the Commission, filing requirements, and restoration activities.
- Perform field inspections to project sites and post-construction site inspections.
- Track pending projects, referrals, and litigation.
- Update the Commission website with land use development information, status of applications, and project statistics.



Restoration project at Bartlett Pond Park

In 2013, Commission Land Use Division Staff:

- Monitored and reviewed development projects in the Central Pine Barrens Area for compliance with ECL Article 57 and the Commission's Comprehensive Land Use Plan by:
 - Providing comments on SEQRA coordination referrals from the three Towns in the Central Pine Barrens (Brookhaven, Riverhead, and Southampton), Suffolk County, and State agencies. In 2013, approximately 28 referrals were received.
 - Reviewing Town Land Use and Hamlet Plans for conformity to NYS ECL Article 57 and the CLUP.

- Reviewing the Carmans River Conservation and Management Plan and the related expansion of the Core and CGA pursuant to the 2013 NY State Legislature amendment to NYS ECL Article 57.
 - Responding to daily inquiries and requests for information related to land use, planning, and development matters in the Central Pine Barrens.
- Continued work on the Comprehensive Land Use Plan amendments, reviewing and updating existing development provisions.
 - Participated in worksessions for Commission review of Plan amendments.
 - Updated the Commission website with development application information, decisions, and statistics.
 - Reviewed applications for hardship waivers, prepared staff reports, SEQRA documentation, and drafted decisions for the following projects that were under review by the Commission:



Camp Wauwepex — Rebuilding dining hall that burned down

Compatible Growth Area Applications:

- Island Water Park (granted Waiver in 2011 and an Amendment in 2013)
- Longwood Public Library (granted Waiver in 2013)
- The Oaks at Miller Place (pending decision in 2014)

Core Preservation Area Applications:

- Kent Animal Shelter (withdrawn in 2013)
- Nassau County Boy Scouts Determination of Jurisdiction (2013)
- Suffolk County Community College Eastern Campus (2013)

The table on the next page depicts the number of decisions made by the Commission on development projects in the Core Preservation Area and Compatible Growth Area from 1993 through 2013. No project decisions have been made in 2014 by the Commission as of March 31, 2014. Projects that are reviewed by the Commission must be considered development as defined in NYS Environmental Conservation Law Article 57 (NYS ECL Article 57) and for projects in the Compatible Growth Area, involve either a hardship waiver request from development standards contained in its Comprehensive Land Use Plan or require a decision by the Commission because the project was a development of regional significance, in a critical resource area or the Commission asserted its jurisdiction over the project pursuant to NYS ECL Article 57. Development projects in the Core Preservation Area require a hardship waiver from the Commission either based on extraordinary hardship or compelling public need as identified in NYS ECL Article 57.

Pine Barrens Commission Development Project Decisions 1993 through 2013									
Year	Core Preservation Area			Compatible Growth Area			Central Pine Barrens		
	Approvals	Disapprovals	Decisions	Approvals	Disapprovals	Decisions	Approvals	Disapprovals	Decisions
1993	0	0	0	0	0	0	0	0	0
1994	6	2	8	6	1	7	12	3	15
1995	7	4	11	12	2	14	19	6	25
1996	7	1	8	9	0	9	16	1	17
1997	8	1	9	0	0	0	8	1	9
1998	3	1	4	3	0	3	6	1	7
1999	3	2	5	3	0	3	6	2	8
2000	1	1	2	0	0	0	1	1	2
2001	7	1	8	1	0	1	8	1	9
2002	4	2	6	0	1	1	4	3	7
2003	2	1	3	2	0	2	4	1	5
2004	1	0	1	4	0	4	5	0	5
2005	3	0	3	6	2	8	9	2	11
2006	1	0	1	4	0	4	5	0	5
2007	0	0	0	3	1	4	3	1	4
2008	1	0	1	0	1	1	1	1	2
2009	0	0	0	0	0	0	0	0	0
2010	2	1	3	1	0	1	3	1	4
2011	1	1	2	3	1	4	4	2	6
2012	1	0	1	2	0	2	3	0	3
2013	0	0	0	1	0	1	1	0	1
Total	58	18	76	60	9	69	118	27	145

Science and Stewardship Division

The purpose of Science and Stewardship Division is to ensure the proper management, protection and restoration of the natural, cultural and historic resources in the Central Pine Barrens area, in conformance with the New York State Environmental Conservation Law (ECL) Article 57 and the Commission's Comprehensive Land Use Plan (the "CLUP"). The Division provides and supports a diverse range of stewardship initiatives for the Commission and its fellow agencies, and promotes scientific research activities in the Central Pine Barrens area.

In addition the Division:

- provides overall support to the Protected Lands Council and its stewardship initiatives (The Protected Lands Council is discussed further in a separate section in this report).
- provides cartographic and data information and analysis services for the Commission.
- provides support to the other Commission Divisions on stewardship matters related to development projects, agency land management plans and land use incident investigations and enforcement actions.
- assists with the maintenance of the Dwarf Pine Trail in Westhampton Beach.



Hubbard County Park

The Division works closely with public landowners within the multi-jurisdictional Central Pine Barrens area on stewardship initiatives involving:

- Cultural and historic resources restoration
- Ecological research, monitoring and restoration
- Land use management and protection
- Fire management planning
- Natural resource management
- Open space management
- Recreational management and planning

Ray Corwin Hiking Trail

The Division is working with the Protected Lands Council to coordinate the development of a regional trail with public landowning agencies from the State, County and Town. The trail will travel from Rocky Point to Yaphank and will be used for hiking and equestrian purposes. The proposed approximately 8 mile trail will be named in memory of the first Executive Director of the Central Pine Barrens Commission, Ray Corwin who passed away in 2010. Ultimately it is hoped that the trail would extend all the way to the

Great South Bay and include several spurs to other areas. The majority of the trail would be along existing open paths which include a mix of fire roads, old horse trails, and other routes that would primarily require some pruning and very little new cutting, except for a small portion of the trail.

During 2013, the Division worked with the Protected Lands Council, equestrians, and the public land managers to perform field reconnaissance of the trail and obtain trail recommendations. A key component of the trail planning process is how to address ATV access points in the trail corridor. Land managers inspected and evaluated various segments of the proposed trail and potential routes under consideration as indicated on a draft trail map. Segments requiring stabilization due to erosion from illegal ATV and 4WD vehicle use were identified and evaluated.

Aerial Monitoring and Ground Support Program

The Commission has a Memorandum of Understanding with the New York Wing of the Civil Air Patrol (CAP) which is a volunteer civilian auxiliary of the United States Air Force and also a member of the Commission's Law Enforcement Council (LEC). The MOU enables CAP to assist the Commission and the LEC by performing aerial missions such as reconnaissance to search for victims, damage assessments, or environmental surveys utilizing visual photographic, digital and video techniques; airborne communications support; and airlift (subject to certain restrictions identified in the MOU). In addition



Aerial flyover performed by CAP in 2013

CAP can provide manual labor (e.g. filling sandbags for flood control); radio communications; and ground teams (typically used in search and rescue missions). The Commission has purchased digital cameras to enable the Division to take key aerial photographs during these missions to document existing land conditions, smoke spotting, agricultural land inventory, and the identification of dump sites, abandoned vehicles, ATV damage and forest health monitoring.

In 2013, CAP performed an aerial reconnaissance mission with Commission staff onboard who documented through aerial photography the forest health of the Central Pine Barrens area and assessed the environmental damage caused by ATVs and 4X4 vehicles, the 2012 wildfires, and dumping.

Fire Management Planning

In response to the 2012 Crescent Bow wildfires, the Commission developed a multi-prong wildfire response strategy. An issue that became apparent during these wildfires was certain areas had no public water supply, therefore no fire hydrants. In 2013, the Stewardship Division was involved in performing research and preparing maps that identified the public water supply availability in these areas and also prepared maps that identified potential natural water body sources such as ponds that could potentially be used for fire suppression purposes during a wildfire.

Ecological Assessment and Restoration

The Commission has retained an ecological services consultant that will, through a five year contract, perform extensive stewardship work in the Central Pine Barrens area consisting of prescribed fire ecological restorations, ecological inventories, assessment, monitoring, management and restoration, invasive species restoration and grassland restorations. The work performed will benefit the public landowners in the Central Pine Barrens area who due to limited staff resources and budget constraints are not able to perform this type of stewardship work on the land that they own.

In 2013 the Stewardship Division reviewed and provided comment on the work plan and schedule for implementation drafted by the consultant. In addition, staff from this Division developed maps and participated in meetings and site visits with the public land managers and the consultant to identify the specific locations where various tasks under this contract would be performed.

Pine Barrens Annual Research Forum

The Pine Barrens Research Forum is sponsored by the Brookhaven National Laboratory, the Central Pine Barrens Joint Planning and Policy Commission, the Long Island Groundwater Research Institute at Stony Brook University and the Foundation for Ecological Research in the Northeast and is held at Brookhaven National Laboratory in Upton, New York, typically on the first Thursday and Friday in October. The Stewardship Division works closely with the sponsors in all of the planning and logistics associated with this event. The Research Forum is discussed further under the Research section of this report.

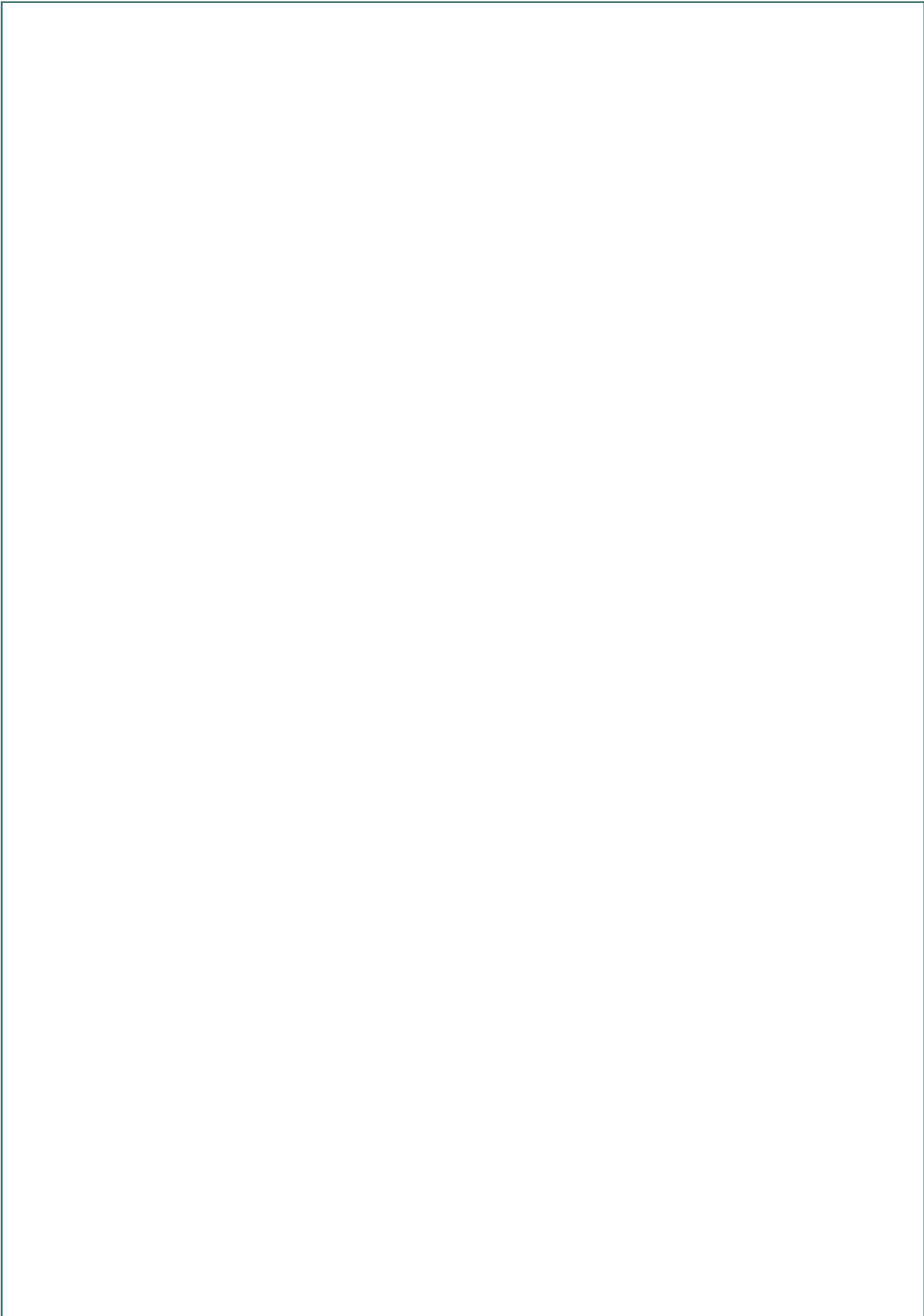
ATV Damage & Dumping Mitigation

The Division continues to work with the public land managers, the Protected Lands Council and the Law Enforcement Council to mitigate widespread ATV damage and dumping in the Central Pine Barrens area. During 2013, mitigation work that primarily involves the installation of barriers and signage focused on the Flanders/Hampton Bays area and the upper Carmans River region. Commission staff and volunteers monitored these project areas on a regular basis through the year.

Invasive Species Management

Staff from this Division represents the Commission on the Long Island Invasive Species Management Area (LIISMA) which meets quarterly. LIISMA is a voluntary partnership of over 50 organizations from Richmond, Brooklyn, Kings, Queens, Nassau and Suffolk Counties that includes government agencies, non-profits and private businesses. This group works together to share information and the latest strategies for invasive species management.

Division staff assists other agencies in the Central Pine Barrens area with invasive plant control events. In 2013, staff participated in an invasive plant control event at Wertheim National Wildlife Refuge to remove Japanese stiltgrass plants by hand and also provided technical assistance to the Suffolk County Water Authority (SCWA) facilities manager on ways to manage invasive bamboo on SCWA properties.



Compliance and Enforcement Division

Compliance and Enforcement Division Duties and Responsibilities

The four Major Areas of duties and responsibilities for the Compliance and Enforcement (CAE) Division through the CAE Coordinator are:

- Land Use and Natural Resource Incident Investigation and Permit Compliance Inspections
- Conservation Easement Monitoring
- Commission Council (LEC, WFTF, PLC) Support
- Health and Safety Training & Driver Safety Training

Land Use and Natural Resource Incident Investigation and Permit Compliance Inspections

The CAE Coordinator conducts compliance inspections of Commission-approved permits for land use activities and development projects under the Commission's jurisdiction to ensure that development does not exceed the scope of the permit conditions, and does so in a timely fashion as projects are implemented. Compliance inspections are performed both before and after Commission permits are issued in order to assure full compliance with permit conditions.

A monthly report is prepared by the CAE Coordinator which compiles and analyzes incoming calls to the Pine Barrens Commission office on potential violations that occur in the Central Pine Barrens. For each call an incident report is completed that is given a Central Complaint number. A tracking system has been established for following up with the agency that has been assigned to investigate the incident. Every report now has a tracking status assigned to it that indicates whether it is "open or closed."



Illegal dumping in the Pine Barrens

Training is given to all Commission personnel, with particular emphasis upon administrative and land use personnel, on how to complete an incident report to capture consistent and reliable information since these staff members are typically the first points of contact for incoming callers concerning incidents.

Land use incident investigation is a cooperative effort in conjunction with other agencies having jurisdiction and includes the reporting of any findings and appropriate follow up work. In the case of verified violations of land use and natural resource laws, notices of violation may be issued as directed by the Commission.

Conservation Easement Monitoring

It is also the responsibility of the CAE Coordinator to conduct regular compliance inspections and prepare field reports for conservation easement parcels held by the Commission, in conjunction with the individual landowners, recognizing the individual conditions of each easement.

Summary of 2013 CAE Work

At the end of this section is a summary report in tabular form that relates to the four areas of CAE responsibilities. The report provides information on the number of field inspections that were performed by the CAE Coordinator on parcels which have received permits from the Commission and on parcels with conservation easements which are held by the Commission from the beginning of 2007 through the end of 2013. Information on incident reporting, compliance site visits and land use incident statistics are also provided.

In addition, in October 2012 Hurricane Sandy impacted the New York Metropolitan area with destruction of homes, storm surges and erosion, and also impacted the Central Pine Barrens. In doing so it created a whole new set of challenges for the Central Pine Barrens Commission and its jurisdiction in the towns of Brookhaven, Riverhead and Southampton which continued into 2013. Significant issues arose with trying to find locations for the storage of storm debris and more than 250,000 water damaged vehicles that insurance companies were looking to temporarily store pending insurance processing. These vehicles began to appear in the Core and Compatible Growth Area without proper authorization from the County, Towns and the Central Pine Barrens Commission. The Commission coordinated with the NYS DEC, the County and the Towns to develop a procedure for removal of the damaged vehicles and to ensure that there was no environmental impact. The State, County and Towns have since compiled a procedure to keep environmentally sensitive areas protected should this situation occur again in the future.

Land Use and Natural Resource Incident Investigation and Reporting

The review of incidents reported to the Pine Barrens Commission in 2013 indicated various impacts to the natural environment were occurring due to dirt bikes, ATVs, off road 4x4 trucks, hunting and trespass violators. There was also an increase in reported dumping complaints. The CAE Coordinator continues to work closely with the Town of Brookhaven, Riverhead and Southampton to investigate these dumping incidents to ensure timely clean up. The Law Enforcement Council has put together a task force to step up patrols of these areas



Law Enforcement Council ATV Task Force investigating illegal ATV use

and has been successful in numerous enforcement actions as discussed in the Law Enforcement Council section of this report.

Conservation Easement Monitoring

There are currently 806 parcels protected by the Central Pine Barrens Credit Program. By the end of 2013, 784 site visits were completed and a filing system with pertinent information on each parcel was established. In 2014, the CAE Coordinator plans on completing the remaining 22 parcels in the Credit Program plus any additional parcels that are new to the Program. The individual tax map parcel is inspected in the field for compliance with the conditions of its easement, any encroachments or other issues such as dumping or ATV use. For large undeveloped areas that contain many undersized parcels where the specific boundaries are not readily discernible, the general area containing the parcels is inspected for its overall environmental integrity, which includes whether the area is relatively intact

with no clearing, has access issues or if illegal activity apparent. These inspections are conducted by using tax map sections instead of visiting specific tax map parcels.

Interagency Communication and Support

In the past six and a half years, since the establishment of the CAE Division, there have been several accomplishments. The CAE staff continues to meet with State, County and Town representatives who have jurisdiction in the Central Pine Barrens. These meetings serve to publicize and answer questions regarding the Compliance and Enforcement Division of the Commission and foster open communication and cooperation among all land use and natural resource enforcement offices.

In 2014, the Commission staff plans to continue these informational meetings with the Town of Brookhaven, Southampton and Riverhead. The CAE staff will continue to work with and support the Law Enforcement Council, the Protected Lands Council and the Wildfire Task Force.

Health and Safety Training

In 2014, the CAE Coordinator will continue to take courses to maintain certifications and remain current with health and safety advancements, and will attend the SEMO Regional meeting as a representative of the Commission. In 2013, through the coordination of the CAE, the Commission staff received training in the following health and safety areas:

1. Emergency situations
2. First Aid
3. Safe use of tools and equipment
4. Reporting an incident and completing an incident report
5. Cardio-Pulmonary Resuscitation (CPR)
6. Automated External Defibrillation (AED)
7. Driver Safety Training

Incident Command System

In 2013, the CAE Coordinator continued the Commission's policy and procedure that involves the preparation and use of an Incident Action Plan and the Incident Command System for Commission sponsored events. This Plan is used by the New York State Division of Homeland Security and Emergency Services, County and Town for emergency response situations. An Incident Action Plan is a written document that organizes all of the event's details, equipment and personnel necessary to carry out an event and assigns responsibility for specific event-related tasks in a very structured, organized manner. It includes a reporting hierarchy that is represented by a chain of command reporting system for staff and personnel to follow based on their assigned area of responsibility for the event. This system has been successfully used in 2013 and prior years to organize and carry out the Annual Research Forum, Discovery Day, Law Enforcement and Wildfire Task Force events and other Commission sponsored events.

DEVELOPMENT PROJECT COMPLIANCE SITE VISITS

Reporting Period: 8/21/07 - 12/31/13

Central Pine Barrens	Brookhaven (District 200)	Riverhead (District 600)	Southampton (District 900)
Core Preservation Area	31	13	11
Compatible Growth Area	54	4	6

CONSERVATION EASEMENT MONITORING SITE VISITS

Reporting Period: 8/21/07 - 12/31/13

Core Preservation Area	Brookhaven (District 200)	Riverhead (District 600)	Southampton (District 900)	Totals
Tax Map Sections				
Total	46	9	55	110
Done	44	7	52	103
Pending	2	2	3	7
Tax Map Parcels				
Total	353	35	418	806
Done	345	28	411	784
Pending	8	7	7	22

COMPLIANCE AND ENFORCEMENT INCIDENT REPORTS

Reporting Period: All from 1/1/12 - 12/31/13 and Open (i.e., Pending) from 2012

Year	Brookhaven (District 200)		Riverhead (District 600)		Southampton (District 900)		Other		Totals	
	2013 All	2012 Open	2013 All	2012 Open	2013 All	2012 Open	2013 All	2012 Open	2013 All	2012 Open
Core	7	3	2	0	3	0			12	3
CGA	7	0	0	0	1	0			8	0
Non-PB	0	0	0	0	0	0	0	0	0	0
Totals	14	3	2	0	4	0	0	0	20	3

Incident Statistics - Reporting Period 1/1/07 - 12/31/13							
Year	2007	2008	2009	2010	2011	2012	2013
Intake							
Commission	4	7	8	0	1	0	0
Sent by Agency to Commission	6	13	5	5	4	5	4
Discovered by Commission Staff	3	15	18	7	4	8	8
Called in by Individual to Commission	16	36	28	30	18	6	8
Total Incidents Reported	29	71	59	42	27	19	20
Location of Incident							
Brookhaven	19	49	45	27	22	11	14
Southampton	6	17	13	8	4	4	4
Riverhead	4	3	1	5	1	3	2
Occurring on Public Land	13	44	42	18	17	8	9
Occurring on Private Land	15	27	17	22	11	12	11
Occurring on Public & Private Land	1	0	0	0	0	1	0
Core	11	41	41	29	15	8	12
CGA	16	26	15	10	12	10	8
Core & CGA	1	2	0	1	0	0	0
Outside CPBA	1	2	3	1	0	1	0
Nature of Incident*							
Clearing	20	29	16	16	13	12	10
Structures	4	2	2	0	0	0	1
Dumping	3	11	20	13	7	3	2
Mining	2	0	0	1	1	0	0
Hunting	1	0	2	2	1	0	1
ATV	3	6	6	3	2	0	6
Other	2	27	15	11	3	5	0
*note some incidents involve more than one land use issue							
Referrals*							
Sent to Town	12	30	20	18	12	16	9
Sent to County	2	27	21	12	5	3	9
Sent to State	12	7	18	7	9	6	3
Commission	8	31	4	9	5	0	0
Sent to AG	5	5	0	0	0	0	0
Other	5	4	0	1	0	1	2
*note some incidents are sent to multiple agencies							
Status							
Founded	22	68	58	41	26	18	19
Unfounded	7	3	1	1	1	1	1
Open	0	0	0	1	2	3	5
Closed	29	71	59	41	25	15	15
Disposition*							
Fine	0	0	1	0	0	0	0
Revegetation	0	4	2	0	0	0	0
Land Purchase	0	0	0	0	0	0	0
Land Swap	0	0	0	0	0	0	0
Other	1	0	0	0	0	0	0
Pending		0	0	1	2	3	5
* Indicates disposition for founded cases closed.							

Pine Barrens Law Enforcement Council

Sgt. Arthur Pendzick, Suffolk County Park Police, Chair

Lt. Dallas Bengel, NYS EnCon Police, Vice Chair



There are twenty-six different law enforcement, public safety, and environmental agencies that have jurisdiction or responsibilities within the Central Pine Barrens. In 1995, the Pine Barrens Law Enforcement Council was created (PBLEC), which brought all these agencies together and has since been the primary means for them to communicate, exchange ideas and work together to better protect and safeguard the Central Pine Barrens. Through various means of law enforcement and inter-agency cooperation, illegal ATV and off road use, dumping, encroachment, illegal land clearing, hunting violations, homeless encampments and many other problems are managed every year.

As needed creative ideas are utilized to address unique issues. For example, a multi-agency task force was created to combat illegal ATV and off road activity as well as other problems which plague the environmentally-sensitive lands of the Central Pine Barrens. Monthly meetings are held to discuss, critique and plan on how to effectively continue to combat environmental crimes in the Central Pine Barrens.

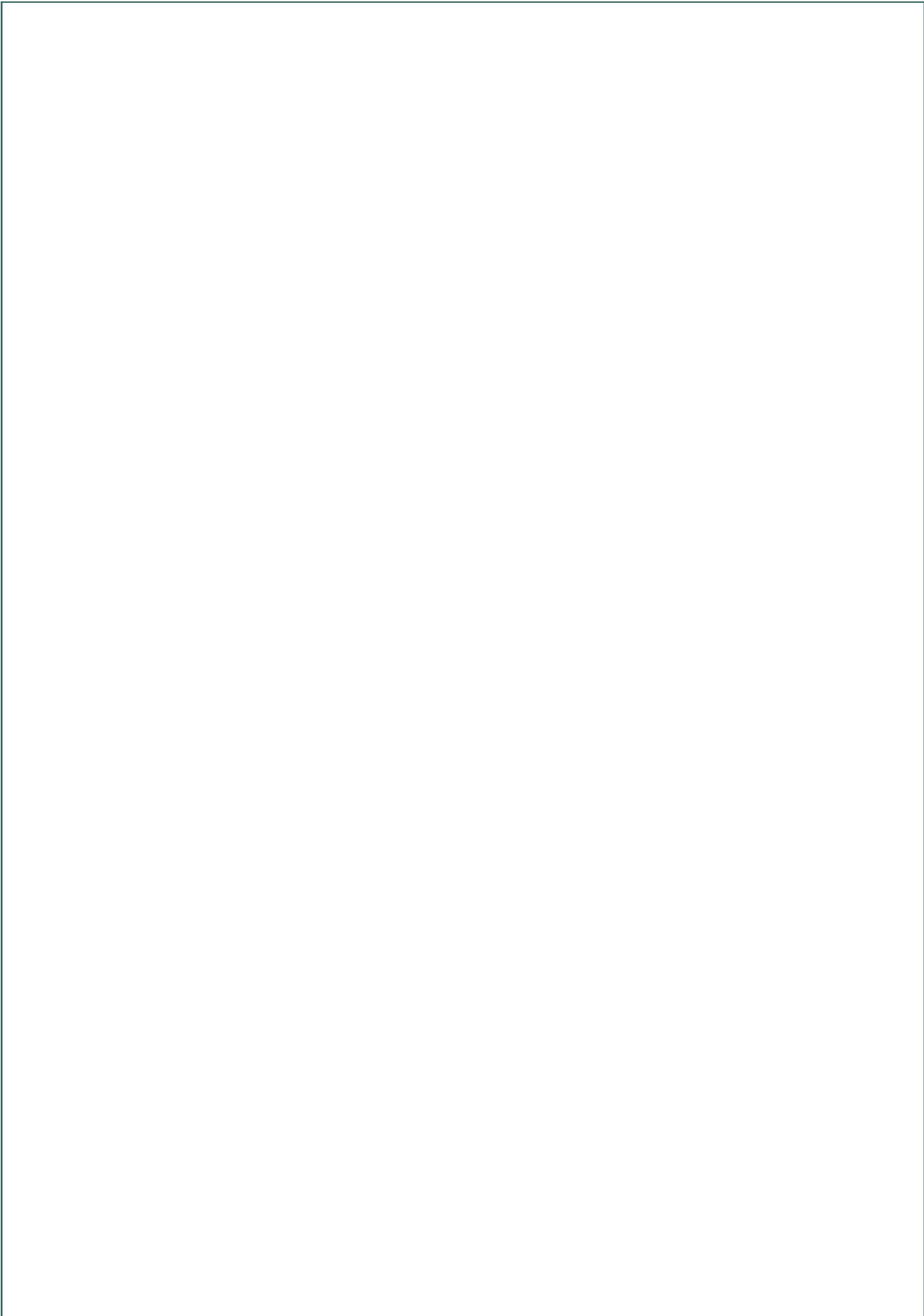
The Law Enforcement Council Report for 2013 that were prepared by Sgt. Arthur Pendzick, PBLEC Chair is provided on the pages that follow.

**PINE BARRENS LAW ENFORCEMENT
COUNCIL**

2013 ANNUAL REPORT



By Sgt. Arthur Pendzick, Chairman PBLEC



2013 Memorial Dedications

In 2013 we mourned the passing of two very special people, each who contributed greatly in helping to develop programs for and protect the Central Pine Barrens:

First is Lawrence (Larry) Paul, who, as we all know, dedicated decades of his life working within the Central Pine Barrens helping to make them a place for future generations to use and enjoy.

Second is retired Suffolk County Park Police Officer James Downey, who for years, prior to the Law Enforcement Council even being formed, was one of the early officers working in the Pine Barrens enforcing ATV and other Environmental Laws. He was my partner and, working together, we established many enforcement procedures that are still being used today.

This report is dedicated to their memory and all the fine work that they did.

The Central Pine Barrens Law Enforcement Council

Back in 1994 a group of Law Enforcement Agencies that had jurisdiction in the Central Pine Barrens had a meeting to discuss law enforcement and problems within their areas. This meeting was such a success that more meetings were arranged and the Pine Barrens Law Enforcement Council (LEC) was created.

Today, 26 member agencies, along with several civilian groups, make up the Council, which meets 8 times a year, discussing problems, exchanging ideas and working together to help protect and safeguard the Central Pine Barrens.

Issues such as illegal ATV and off-road vehicle use are regularly discussed as well as all other environmental problems. A multi-Agency Task force was created to combat these issues, and agencies, working together and alone, are not only safeguarding the Pine Barrens but have created a strong working relationship and camaraderie among themselves.

For 2013, the Pine Barrens Law Enforcement Council has the following to report:

Equipment and the Environmental Benefit Fund

A total of \$8,697.49 was expended from the Environmental Benefit Fund (EBF) monies in 2013. Purchased was a 2013 Yamaha Grizzly Quad for \$8,408.49. This was turned over to the New York State Forest Rangers. A total of \$89.00 was used to purchase parts to repair a Quad donated by Brookhaven Town last year which was turned over to the Deputy Sheriffs. Another \$200.00 was used to purchase an outdoor camera and turned over to the Central Pine Barrens Commission. All of these purchases are available for use to any Law Enforcement Council member when needed.

A total of \$46,213.30 is still available in the EBF Fund and is guaranteed to last the Council for at least another 3 years, with the \$15,000-a-year spending cap that is in place.

The LEC has also, once again, formally asked the Town of Brookhaven for another ATV donation in 2013, hoping to receive one sometime in the near future.

A brand new Polaris 500 Sportsman Quad valued at over \$6,000 was accepted by Suffolk County and donated to the Suffolk County Park Police, a founding member of the LEC, by the Open Space Council and Rose Breslin as a result of a court settlement. This ATV will be used to help patrol properties owned by AVR as well as County Parklands in the Yaphank and Middle Island areas.

Training, Mitigation, Aviation, Etc.

The Suffolk County Sheriff's Department, which has Deputies certified as ATV instructors, has once again been providing training at their Gabreski Airport facility to Law Enforcement, Fire Department and Ambulance personnel.

The LEC has continued its involvement with the Commission's Protected Land Council (PLC) by attending and participating in their meetings and working with other public groups in promoting and assisting with Law Enforcement in the Pine Barrens and other undeveloped areas. The PLC works closely with the LEC, attending and participating in all our Council's meetings. Together various Pine Barrens programs and ideas are implemented.

The LEC has recently identified several additional abandoned vehicles in the Rocky Point, Manorville and Flanders areas that need to be removed by an airlift. In the past, the New York Army National Guard has worked with the Council to remove many such vehicles and together we are planning to do another airlift in 2014. A water Bucket training exercise is also being worked on with the Wildfire Task Force, the LEC, Army Air Guard and 106th Rescue Wing for 2014.

At the September LEC meeting NYS DEC Officer Timothy Fay did an updated hunting presentation for Council members which was both informative and interesting.

There were 8 regular LEC meetings in 2013, all of which took place at the Southaven County Park Lodge. Illegal ATV and off road vehicles were the major subjects of discussion once again.

Executive sessions at the LEC meetings (where only law enforcement personnel attend at the meeting's end and which were started last year) were used 2 times in 2013.

2013 Annual Pine Barrens Law Enforcement Council Multi-Agency Task Force Details

ATV's/Off Road Vehicles

There were 6 Multi-Agency ATV details in 2013, this being the 11th consecutive year that I have had the privilege of doing them. Illegal ATV activity is still a major problem in the Pine Barrens, but has also spread to many other populated areas throughout the County.

There are fewer illegal ATVs out there than in previous years, but people are riding more at night and other off hours, and therefore they are becoming increasingly more difficult to apprehend. Another large concern that has increased in recent years is illegal off-road 4x4 use.

Results and particulars of the 6 Multi-Agency ATV/Off Road details are as follows:

Participating Agencies:

NYS Environmental Conservation Police (DEC)
NYS Department of Environmental Conservation Forest Rangers
NYS Park Police
NYS Police (Troopers)
Suffolk County Deputy Sheriffs (*for first time this year, Sheriff's aviation plane assisted us on details*)
Suffolk County Park Police
Suffolk County Parks Department

Illegal ATV Activity:

A total of 3 illegal ATV's were impounded
1 Enduro (street legal ATV)
1 Dirt Bike
1 Quad

Illegal ATV Summonses Issued:

A total of 8 ATV-related summonses were issued:
2- SC Code 822.3a (operate ATV on Public lands)
3- SC Code 822.3b (operate ATV on private lands w/o written consent)
2- V&T 2282.1 (operate unregistered ATV)
1-V&T 2407.4 (operate uninsured ATV)

In the past 11 years of the Multi-Agency ATV Task Force details 1,011 illegal ATVs have been impounded and 2,436 ATV-related summonses have been issued.

Illegal Off Road Vehicle Activity:

A total of 18 Off Road Vehicles (4x4s) were apprehended on LEC details and their operators were issued 30 summonses as follows:

14- SC Code 822.11a (operate off road vehicle on public lands)
4- SC Code 822.3b (operate off road vehicle on private lands w/o written consent)
11- NYS ECL 11-2113.1 (trespass on state lands)
1 - NYS ECL-GNYCRR 188.1 (possession of illegal bait fish)

In 2012/13 (since off road records have been kept) a total of 39 illegal off-road vehicle operators have been apprehended and issued 67 summonses on these LEC details.

Participating Officers on the 2013 ATV details:

Supervisors - Sgt. Arthur Pendzick (SC Park Police)
Sgt. Mike Smith (Deputy Sheriff)
Lt. Dallas Bengel (DEC Officer)
Sgt. Daniel Kirby (NYS Park Police)
EnCon Officers - Don Damrath, Christopher DeRose, Timothy Fay, Kaitlin Grady, Ron Gross,
Chris Lagree, Richard McNamara, Landon Simmons & Mark Simmons
Forest Rangers - Bryan Gallagher, Chester Lunt, Russell Martin, David Nally, Joe Pries,
Kevin Slade & Mike Thompson

State Park Police - Erick Duran, Jim Protosow & Jon Luke
State Troopers - Kevin Caramore & Eric Carver
Deputy Sheriff's - Pete Brodowski, Will Cullen, Lenny Grausso, Eric Hassid, John Jordan, John Noonan, Rob Reeve, Vincent Spadafore, Robert Voloino & Scott Zimble
SC Park Police - Jim Curley, Mike Filippazzo, Mike Malone, Brian McVeigh, John Rodriguez & Matt White
SC Parks Dept. - Superintendent Tony Trotta, Rich Malloy & Steve Tooker (*all assisted with impounds etc.*)



ATV Detail October 27, 2013

Commercial Vehicle Enforcement

These Multi-Agency Details entail taking large trucks (over 10 tons) that travel through the Central Pine Barrens, and escorting them to an inspection area where they are checked for everything including overloading, equipment, cargo and even emissions. Many of these trucks are carrying pesticides, chemicals and flammables that if leaking or in an accident could be very detrimental to the environment.

The Suffolk County Deputy Sheriffs and New York State Department of Transportation (DOT) do these details on a regular basis on the East End, and when other LEC member agencies participate, we include it as a Pine Barrens Multi-Agency detail.

Deputy Sheriff Sergeant Michael Smith organizes and supervises these details, which are usually conducted in the Westhampton area. New York State Environmental Conservation Police, Southampton Town Police (CRU) and Suffolk County Park Police usually assist on these Multi-Agency details.

In 2013, the LEC participated in 3 of these details, in which a total of 48 trucks were inspected. Of these 48, 21 had to be taken out of service (either towed away or have their violations corrected before being allowed to go back on the road) and a total of 59 summonses were issued. The more than 40% of trucks that were taken out of service shows the necessity for these details, especially when these trucks are traveling through the environmentally-sensitive Pine Barrens.



CVE Detail April 17, 2013

Enforcement by PBLEC Member Agencies

The LEC has its Multi-Agency ATV Task Force and other details that have produced great results. But more important is the individual work done by each member agency which goes on 24/7. The following is a list of agencies which have provided me with figures of the enforcement that they have done in and around the Pine Barrens in 2013. They are:

- Quogue Village Police
- New York State Environmental Conservation Police
- New York State Police
- Suffolk County Deputy Sheriffs
- Suffolk County Park Police
- United States Fish & Wildlife Service

TOTAL Enforcement by above Agencies in Pine Barrens:

- 56 ATV Complaints
- 100 ATV related summonses issued
- 20 ATV impounds
- 2 Stolen ATV's recovered
- 5 Stolen vehicles recovered
- 42 Summonses issued to illegal 4x4's
- 4 Arson/fire incidents handled
- 121 illegal dumping incidents/summonses
- 87 Hunting/fishing violations
- 52 firearm/weapon incidents
- 86 Misc. Environmental violations
- 115 Trespass summonses
- 11 Property encroachments

- 2 Illegal woodcutting
- 6 Homeless person incidents
- 17 Illegal drug incidents
- 145 Penal law Misdemeanors
- 41 Penal Law Felonies

In Closing

The LEC, for the past 19 years, has been a very unique organization uniting the many different agencies that work in the Pine Barrens. Together and separately they provide a valuable service that helps to maintain a safe and protected Pine Barrens.

Special thanks to all the member agencies for all the great work that they do, and also for the continued support from the Commission Chairman Peter Scully and all the Pine Barrens Commissioners and designated Representatives.

And as usual, special thanks to the entire Commission Staff (especially John Pavacic, Larry Hynes and Kathy Delligatti) who are all instrumental in keeping the Law Enforcement Council a functional and working reality.

We are all looking forward to 2014 to continue working towards another successful and productive year which will also mark the LEC's 20th anniversary.



ATV Detail - Firearms and other weapons are a major concern in the Pine Barrens December 15, 2013

ENVIRONMENTAL ENFORCEMENT SPECIAL RECOGNIZATION AWARD

For years he has been instrumental in performing or arranging most of the impounds of illegal ATVs seized by the Multi-Agency ATV Task Force. Thanks to his involvement many of the signs, barricades and other essentials necessary to do effective Law Enforcement in the Pine Barrens have been made possible. As Parks Superintendent, Mr. Trotta has always been receptive to Law Enforcement concerns and is also involved in many of the decisions that affect everyday activities in the Pine Barrens. He has also been a regular and active participant at LEC meetings.

Each year the membership of the LEC is given the opportunity to select an individual who they feel should be recognized for his/her work within the Central Pine Barrens. A description of the 2013 honoree and his contributions to the Central Pine Barrens is provided below:

Suffolk County Park Police Sergeant & LEC Chairman Arthur Pendzick

For his substantial efforts, advocating, facilitating and supporting the development and use of enforcement-related resources within the Central Pine Barrens.

Sgt. Pendzick has been a member of and very active participant in the LEC for more than 11 years, having served as its chairman for the past 8. During this time he has worked with the many other Agencies which have jurisdiction within the Pine Barrens to promote and increase law enforcement efforts through the LEC. For 10 years, he has conducted a Multi-Agency ATV Task Force on a regular basis which he still organizes, supervises and in which he participates. These details have been responsible for over 1,000 illegal ATV's being impounded and almost 2,500 ATV-related summonses being issued, plus prosecution on many other violations including illegal dumping, illegal 4X4 operation, trespass, drugs and many other environmental crimes.

Wildfire Task Force

John Urevich, Chair

Capt. Timothy Byrnes and Ed Schneyer, Co Vice Chairs

The Wildfire Task Force is one of the Commission's larger Councils with 44 members comprised of public and private agencies and local fire departments. The breakdown of the organizations represented on the Task Force is presented in Table WF-1. The WFTF was created after the 1995 wildfires to bring all fire service-related entities together to provide for pre-wildfire suppression planning and response in the Central Pine Barrens and to address wildfire prevention planning provisions called for by the Long Island Pine Barrens Protection Act. The Task Force accomplished this goal through the preparation of a Central Pine Barrens Fire Management Plan which was completed in 1999, which led to the creation of several subcommittees to carry out this Plan. A copy of the Fire Management Plan is available on the Commission website at

http://pb.state.ny.us/chart_stewardship_main_page.htm#WTF

The Wildfire Task Force meets approximately four times per year on a weekday evening, with the locations varying among fire houses and agency offices. Specialized committees also exist, which meet on schedules that are set separately from the Task Force. The current meeting schedule and copies of meeting minutes are available online at http://www.pb.state.ny.us/chart_stewardship_main_page.htm#wtf. The Task Force has the following standing subcommittees:

- Firewise and Wildfire Prevention Subcommittee
- Fire Weather Subcommittee
- New York Wildfire and Incident Management Academy
- Prescribed Fire Subcommittee
- Training Subcommittee
- Water Supply Subcommittee (temporary)

Wildfire is a natural process in the fire-adapted Pine Barrens. However, due to a community's close proximity to this fire-prone ecosystem, wildfires can pose a risk to area residents and property. The abundance of fire-dependent vegetation, extensive wildland urban interface and significant wildfire history, have led the New York State Firewise Council to declare the eastern portion of Long Island, which is dominated by the Central Pine Barrens Area, to be the number one community in the state at risk for damage to and loss of property due to wildfire. Over 800 brush fires typically occur every year during the spring and summer in Suffolk County. In 1995, the Rocky Point and Sunrise Fires burned over 5,000 acres and continued to burn for several days. These wildfires resulted in extensive evacuations, loss and damage to property, the closure of major transportation routes in the area and significant economic impacts to local businesses, tourism and residents. In April, 2012, the Crescent Bow wildfires in the Ridge and Manorville areas burned over 1,200 acres which again resulted in evacuations of homes and significant damage to property and natural resources.

In the wake of the April 2012 Crescent Bow Fire, the Commission developed a multi-pronged strategy to deal with the on-going wildfire threat which the Commission continues to strive to carry out in 2013. The strategy includes:

Table WF-1

Central Pine Barrens Wildfire Task Force

Copies of the Commission resolution that established the Wildfire Task Force and its mission statement are available online at http://www.pb.state.ny.us/wtf/wtf_resn.htm

Federal Organizations (5)	Brookhaven National Laboratory Fire Rescue Group (part of Emergency Services Division) New York Air National Guard 106th Rescue Wing New York Army National Guard Aviation Support Facility #1 United States Fish and Wildlife Service (Long Island Refuge Complex) United States Forest Service
State Organizations (5)	New York State Department of Environmental Conservation New York State Emergency Management Office New York State Office of Fire Prevention and Control New York State Office of Parks, Recreation, and Historic Preservation Suffolk County Water Authority
County Organizations (4)	Suffolk County Department of Fire, Rescue and Emergency Services Suffolk County Fire Academy Suffolk County Department of Parks, Recreation and Conservation Suffolk County Police Department Arson Squad
Town Organizations (3)	Brookhaven Town Fire Marshal (Department of Public Safety, Division of Fire Prevention) Riverhead Town Fire Marshal (part of Building Department) Southampton Town Fire Marshal (part of Public Safety Department)
Fire Departments (16)	Brookhaven Fire Department East Quogue Fire Department Eastport Fire Department Flanders Fire Department Gordon Heights Fire Department Hampton Bays Fire Department Manorville Fire Department Middle Island Fire Department Miller Place Fire Department Quogue Fire Department Ridge Fire Department Riverhead Fire Department Rocky Point Fire Department Wading River Fire Department Westhampton Beach Fire Department Yaphank Fire Department
Fire Councils (5)	Brookhaven Town Fire Chiefs Council Fire Chiefs Council of Suffolk County NY Riverhead Town Fire Chiefs Council Southampton Town Fire Chiefs Council Suffolk County Fire District Officers' Association
Commission Councils (2)	Law Enforcement Council Protected Lands Council
Private Organization (1)	The Nature Conservancy (Long Island Chapter)
Executive Board	Chair & two Vice Chairs

- Enhanced training for volunteer firefighters;
- Providing increased instruction for first responders via the Commission's Wildfire and Incident Management Academy
- Expanding the use of prescribed burns to reduce wildfire fuel loads;
- Reinvigorating the Central Pine Barrens Fire Management Plan; and
- Expanding the establishment of Firewise Communities programs.

In 2013, the Wildfire Task Force focused on:

- Performing a variety of wildfire prevention and awareness activities,
- Evaluating GPS equipment needs for the local fire service departments,
- Evaluating and identifying water supply availability for wildfire fighting in the Central Pine Barrens area, and
- Providing wildfire firefighting and incident management training opportunities through the Commission's New York Wildfire and Incident Management Academy.

Firewise and Wildfire Prevention

Firewise and the Firewise Communities program offers residents in the fire-prone Central Pine Barrens a unique opportunity to implement practices which will help prepare a home for a wildfire *before* it occurs. Homeowners can significantly increase the ability of their homes to survive a wildfire by implementing Firewise measures on their property. These can include measures such as removing dead leaves and dead brush, cleaning out gutters, moving wood piles away from the house and other similar, basic, good property maintenance measures. Homes and communities which have adopted the Firewise approach allow firefighters to concentrate on fighting the wildfire, which ultimately saves more residences and lives. The Firewise program draws on a community's spirit and its willingness to take some of the responsibility for reducing wildfire risks and can be tailored to a community's specific needs. Information on the Firewise and Firewise Communities USA program is available on the Firewise website at <http://firewise.org>. The Commission has included outreach to local communities located in wildland urban interface areas in the Central Pine Barrens on Firewise and Firewise Communities program as part of its multi-prong strategy to deal with the on-going wildfire threat.



New York Firewise Council Firewise Trailer

In 2013, Commission staff along with Heidi Wagner, the Northeast Firewise Advisor from the National Fire Prevention Association, provided a presentation to the Flanders, Riverside, Northampton Community Association in April on Firewise and the Firewise Communities Program. The Commission is working on developing a pilot Firewise Community Program in the Central Pine Barrens Area and is trying to identify a community that would be interested in working with the Commission on this voluntary program.

The Commission's Education and Outreach Coordinator and the Chair of the Wildfire Task Force have developed a presentation that explains the role of the Commission and the Wildfire Task Force and pro-

vides information on wildfire prevention. In 2013, they provided presentations to the Westhampton and Riverhead Rotaries.

Fire Weather

The Commission continues to operate a fire weather station located in Eastport at a Suffolk County Water Authority wellfield that is located on County Route 51 in Eastport. Data from this weather station is used to determine the daily fire danger rating for the Central Pine Barrens. The fire danger rating translates weather and vegetation conditions (fuels) into how difficult a wildfire would be to control should a fire start occur. This data is sent daily from the Commission staff to Suffolk County Fire Rescue and Emergency Services (SCFRES) which in turn dispatches this information to the local fire service community. In addition, Commission staff sends this report by email and fax to over 50 recipients comprised of local fire departments, public land managers and other interested individuals. The local fire service community uses this information for pre-planning fire suppression resources during dry weather and vegetation conditions when vegetation can more readily ignite and spread into a large wildfire. This information is also placed on three Smokey Bear fire danger signs located near the Sears Bellows County Park entrance, Southaven County Park, and CR 46 near Brookhaven National Laboratory, to inform the public.



Eastport Fire Weather Station, on CR51

The fire danger rating reports are based largely on the statistical evaluation of historic fire weather data and its relationship to historic fire occurrence data that is compared to the daily fire weather data readings, the current National Weather Service fire weather forecast, the number of days since the last significant rain event and the current live fuel (vegetation) conditions, along with other factors. Grass conditions are monitored in the Spring since this is typically where a significant number of fire starts occur during that time of year. In May, the potential for brush fires diminish as the trees, brush and other vegetation green up or leaf out. During the summer, brush conditions are monitored and fire danger reports are issued based on this fuel type.

The local fire service and public land managers may, based on this fire danger information, decide to increase patrols in certain areas, pre-stage equipment or even close or limit access to public land.

2013

The fire danger ratings for 2013 are provided in Table WF-2. The spring started off with dry, windy conditions with minimal precipitation which lead to Moderate fire danger levels and culminated with a period of several High fire danger days towards the end of April. As leaf out of the trees and brush occurred in May, the fire danger remained Low for most of June, as expected, with Moderate fire danger rating occurring in mid-July, due to again minimal precipitation and windy conditions. The remainder of the summer remained at Low fire danger. The fall was unusually dry and windy which lead to Moderate conditions occurring from October through November.

Table WF-2

Daily Fire Danger Ratings for 2013

Week	Sun	Mon	Tue	Wed	Thu	Fri	Sat
11/10 - 11/16		Low					
11/3 - 11/9		Moderate	Moderate	Moderate	Low	Moderate	Moderate
10/27 - 11/2		Moderate	High	Moderate	Low	Low	Moderate
10/20 - 10/26		Moderate	Moderate	Low	Moderate	Moderate	Moderate
10/13 - 10/19			Low	Low	Low	Moderate	Moderate
10/6 - 10/12		Low	Moderate	Moderate	Low	Moderate	Moderate
9/29 - 10/5		Low	Low	Moderate	Moderate	Low	Low
9/22 - 9/28		Low	Low	Low	Low	Low	Low
9/15 - 9/21		Low	Low	Low	Low	Low	Low
9/8 - 9/14		Low	Low	Low	Low	Low	Low
9/1 - 9/7		Low	Low	Low	Low	Low	Low
8/25 - 8/31		Low	Low	Low	Low	Low	Low
8/18 - 8/24		Low	Low	Low	Low	Low	Low
8/11 - 8/17		Low	Low	Low	Low	Low	Low
8/4 - 8/10		Low	Low	Low	Low	Low	Low
7/28 - 8/3		Low	Low	Low	Low	Low	Low
7/21 - 7/27		Low	Low	Low	Low	Low	Low
7/14 - 7/20		Moderate	Moderate	Moderate	Moderate	Moderate	Moderate
7/7 - 7/13		Low	Low	Low	Low	Low	Low
6/30 - 7/6		Low	Low	Low	Low	Low	Low
6/23 - 6/29		Low	Low	Low	Low	Low	Low
6/16 - 6/22		Low	Low	Low	Low	Low	Low
6/9 - 6/15		Low	Low	Low	Low	Low	Low
6/2 - 6/8			Moderate	Moderate	Low	Low	Low
5/26 - 6/1			Low	Low	Low	Low	Low
5/19 - 5/25		Low	Low	Low	Low	Low	Low
5/12 - 5/18	Moderate	Moderate	Moderate	Low	Low	Moderate	Moderate
5/5 - 5/11		Moderate	Moderate	Low	Low	Low	Low
4/28/ - 5/4		Moderate	Moderate	High	High	High	High
4/21 - 4/27		High	Low	Low	Moderate	Moderate	High
4/14 - 4/20		Moderate	Moderate	Low	Moderate	Low	Moderate
4/7 - 4/13		Moderate	High	Moderate	Low	Low	Low
3/31 - 4/6				Moderate	Moderate	Low	Moderate

(*) indicates National Weather Service Red Flag Warning day.



New York Wildfire and Incident Management Academy

The Academy was established in 1998 with the following goal:

"The Academy's goal is to provide for a safe learning environment for Wildland Firefighters and Incident Managers and to foster greater networking opportunities and partnerships between participants from federal, state, and local agencies."

To aid in achieving this objective, the NYWIMA is managed to mirror an actual incident utilizing the Incident Command System (ICS) under the direction of an Incident Management Team (IMT). The IMT reflects the interagency and cooperative nature of today's incident management philosophy with team members coming from federal, state, and local agencies.

Academy Objectives

- Train students to National Wildfire Coordinating Group Standards (NWCG).
- Develop qualified trainers and instructors for Wildfire and Incident Management Courses.
- Develop awareness of fire management and fire fighting safety among fire fighting organizations and public officials.
- Encourage interagency cooperation, coordination, exchange of experience, education and technology transfer from all levels of government.
- Develop a group of interagency leaders to build upon the first four objectives in the metropolitan New York and Northeast Region.



The Central Pine Barrens Commission's Wildfire Task Force conducts the Academy with a consortium of federal, state and county agencies including: (Federal) Brookhaven National Lab, Bureau of Land Management, National Park Service, United States Coast Guard, United States Forest Service, United States Fish and Wildlife Service; (State) Massachusetts Department of Environmental Management, New Jersey Forest Fire Service, New York State Department of Environmental Conservation (DEC), New York State Division of Homeland Security and Emergency Services (DHSES), New York State Office of Fire Prevention and Control, Stony Brook Southampton College and (City, County and

Other Organizations) Dowling College, Fire Department of New York (FDNY), Suffolk County Department of Fire, Rescue, and Emergency Services, and the Colorado Wildfire Academy.

For course and registration information for the current year, visit the Academy web site at <http://www.nywima.com>, or contact the Academy Coordinator by phone at 631-769-1556 or by e-mail at nywima@pb.state.ny.us

In 2013, The Academy offered the following training opportunities

- March - Make up Classes for Courses Cancelled due to Hurricane Sandy in October 2012
- April— Spring Prescribed Fire Academy held for the first time
- October— Annual 10 day training period
- November— S-215 (Fire Operations in the Wildland Urban Interface)
- December— I-300 (Intermediate Incident Command System)

The statistics for these training events that includes the number of instructors and students is provided on the next page along with a listing of the courses that were held during the annual October Academy.

Prescribed Fire Subcommittee

The New York State Department of Environmental Conservation is currently the sole agency that performs prescribed fires on Long Island. These prescribed fires help maintain the ecological health of natural areas, are used for ecological restoration, and assist with reducing the amount of vegetative fuel build up in an area which in turn will reduce the potential fire intensity in an area should a wildfire occur. Table WF-4 identifies the prescribed fires that were performed in 2013 along with their acreage and location. The majority of the prescribe fires performed in 2013 were for maintaining grasslands.

Training Subcommittee

The primary focus of this subcommittee is to provide wildfire firefighting training with the New York Air and Army National Guard using helicopters equipped with water buckets. The training includes the local fire departments which learn about the protocol that is required to be followed in order to get a helicopter with a water bucket on scene during a wildfire. This training is provided at least annually depending on the availability of the National Guard. The training helps the Guard obtain specific qualification training they need. One NYSDEC sponsored qualification training was held in 2013 as part of a prescribed fire event.

Water Supply Subcommittee (temporary)

A key factor that came out of the April 2012 wildfires was the need for water supply sources for fire fighting purposes in the Ridge and Manorville areas that do not have public water supply available. The County worked closely with fire districts to select the locations for eight fire wells. The Suffolk County Department of Health Services Office of Water Resources worked closely with the Manorville to select the locations to install fire wells. The installation of these wells was performed for free by the Office of Water Resources and the County also provided \$25,000 toward the construction materials for these wells.

WF-3

2013 Training Performed

**2013 March Make-up Classes due to cancellation of classes of the 2012 October Academy from Hurricane Sandy
March 11, 2013 - March 15, 2013**

5 - Instructors & staff

55 - Students

Total in attendance - 62

Classes held:

I-300 - Intermediate Incident Command System

I-400 - Advanced Incident Management System

S-133 - Look up, look down, look around

S-230 - Single Resource Boss (crew boss)

S-231 - Single Resource Boss (engine boss)

**2013 April Spring Academy
April 8, 2013 - April 15, 2013**

19 - Instructors & staff

37 - Students

24 - Trainees

Total in attendance - 80

Classes held:

RX-310

S130/190 - 5 Day Class

S130/190 - Field Day only

S-234

Supply Unit Leader Trainee

Safety Officer Trainee

Plans Section Chief Trainee

Public Information Trainee

Operations Section Chief Trainee

Logistics Section Chief Trainee

Liaison Officer Trainee

Division/Group Supervisor Trainee

2013 October Fall Academy

October 25, 2013 - November 3, 2013

80 - Instructor & staff

304 - Students

13 - Trainees

Total in attendance - 397

Classes held:

Brush Truck Training for the Volunteer Fire Service

Basic Wild land Search Skills

I-300 - Intermediate Incident Command System

I-400 - Advanced Incident Command System

I-402A - ICS Overview for Executives

L-954 - Safety Officer

L-958 - Operations Section Chief

O-305 - All Hazard Incident Management Team Course

S130/190 - Basic Firefighting & Wildfire Behavior

S130/190 - Basic Firefighting & Wildfire Behavior - Field Day class only

S-131 - Firefighter Type 1

S-200 - Initial Attack Incident Commander

S-211 - Portable Pumps & Water Use

S-212 - Wildfire Power Saws

S-215 - Fire Operations in the Wild land/Urban Interface

S-230 - Single Resource Boss (crew boss)

S-231 - Single Resource Boss (engine boss)

S-234 - Ignition Operations

S-244 - Field Observer

S-270/271 - Inter-agency Helicopter Training

S-290 - Intermediate Wild land Fire Behavior Communications Unit Leader Trainee

Division/Group Supervisor Trainee

Equipment Manage Trainee

Facilities Unit Leader Trainee

Liaison Officer Trainee

Logistics Section Chief Trainee

Medical Unit Leader Trainee

Ordering Manager Trainee

Operations Section Chief Trainee

Plans Section Chief Trainee

Resource Unit Leader Trainee

Safety Officer Trainee

Supply Unit Trainee

WF-3
2013 Training Performed
(continued)

**S-215 Fire Operations in the Wild
land/Urban Interface taught to Saint Croix
and St. Thomas - Virgin Islands
November 12, 2013 - November 15, 2013**

St. Croix	St. Thomas
24 students	10 Students
2 Instructors	2 Instructors

**I-300 - Intermediate Incident Command
System taught to National Park Service -
Assateague Island National Seashore -
Maryland**

December 3, 2013 - December 6, 2013
25 - students
2 - instructors

NYS-DEC's Long Island Prescribed Fire for 2013

Start Date	FireType	FuelModel	PropertyName	BurnUnit(orIncident)Description	Acres
3/15/2013	Prescribed Fire	3	Peconic Headwaters NRMA	Line Road West	15.1
3/15/2013	Prescribed Fire	3	Peconic Headwaters NRMA	Line Road East	1.0
4/4/2013	Prescribed Fire	3	Peconic Headwaters NRMA	Fresh Pond South	23.3
4/10/2013	Prescribed Fire	1	Rocky Point NRMA	Currans Field	80.6
4/18/2013	Prescribed Fire	1	Peconic Headwaters NRMA	Eastport Eastern Northern Grassl	45.0
4/26/2013	Prescribed Fire	1	Peconic Headwaters NRMA	Big Field	32.2
5/13/2013	Prescribed Fire	3	Peconic Headwaters NRMA	River Road North	33.0
10/30/2013	Prescribed Fire	1	Peconic Headwaters NRMA	Line Road East	10.1

Monday, April 14, 2014

Page 1 of 1

Courtesy of B. Gallagher, NYS Forest Ranger

Goals for 2014

- Review whether there is a need for additional fire danger signs, and identify possible locations such as near Cathedral Pines County Park and the Commission's office.
- Work on identifying ways to reinvigorate the participation of local fire departments with the Wildfire Task Force.
- Continue to work with the NY Air and Army National Guard to offer wild-fire training sessions on an annual basis based on their availability.
- Assist the Commission with updating the Central Pine Barrens Fire Management Plan.
- Provide enhanced training for volunteer firefighters;
- Providing increased instruction for first responders via the Commission's Wildfire and Incident Management Academy;
- Expanding the use of prescribed burns to reduce wildfire fuel loads;
- Reinvigorating the Central Pine Barrens Fire Management Plan and
- Expanding the establishment of the Firewise Communities programs.

Pine Barrens Credit Clearinghouse Report

James T.B. Tripp, Chair, Andrew Freleng, Vice Chair

The Long Island Pine Barrens Protection Act specified the need for land use protection mechanisms to protect the Core Preservation Area that included the purchase of development rights that later came to fruition when the 1995 *Central Pine Barrens Comprehensive Land Use Plan* (the "*Plan*") was completed and the Pine Barrens Credit Program, a transfer of development rights program, was created. Chapter 6 of the *Plan* outlines the overall Credit Program that defines sending and receiving areas, specifies operating procedures and tracking requirements, and includes Credit allocation formulas. The *Plan* specified a five member Clearinghouse Board of Advisors to oversee the operation and implementation of the Credit Program and is comprised of representatives for the State of New York, the County of Suffolk, and the Towns of Brookhaven, Riverhead and Southampton who are appointed by these entities and serve without compensation.

Owners and purchasers of Pine Barrens Credits (Credits) transact business in an open market, with all Credits and transactions tracked by the Clearinghouse from "cradle to grave". The Clearinghouse can choose to actively assist the market by offering to purchase Credits as it has done in prior years. Information on prior Clearinghouse initiatives to purchase Credits is available on the Commission's website at:

http://www.pb.state.ny.us/chart_pbc_main_page.htm#Current_and_prior_initiatives)

The Clearinghouse also publishes a monthly *Registry* which lists potential buyers and sellers of Credits that is available on the Commission's website at: (http://www.pb.state.ny.us/chart_pbc_main_page.htm#Registry)

Except where noted, all statistics in the report that follows represents the totals from the three participating Towns, Brookhaven, Riverhead and Southampton. Overall program statistics that include Town level breakdowns and information for 2013 is presented in the Program Summary table at the end of this section.

2013 Pine Barrens Credit Clearinghouse Year End Report

This report provides a statistical compilation of the Credit Clearinghouse Program's (the Program's) transactions and Core parcels that have been preserved since the inception of the Program in 1995 and highlights the Program's activity specific to 2013. Except where noted, all of the statistics reflect the Program's activity across the three participating towns, Brookhaven, Riverhead and Southampton. Individual Town level breakdowns referenced in this report are available on the Pine Barrens Credit Program main web page at: http://www.pb.state.ny.us/chart_pbc_main_page.htm.

Acreage Enrolled:

As of 1/1/14, there are 809 parcels enrolled in the Program, which are now protected from future development or for partially developed parcels, from further development since they have conservation easements placed on them. The development potential has been removed from these parcels and translated into Pine Barrens Credits in a certificate form. The owner may either use them directly to develop outside of the Pine Barrens Core Area or can sell to a developer who may need Credits to satisfy town zoning code requirements for extra development density or Suffolk County Department of Health Services sanitary requirements. The total acreage that has been encumbered by conservation easements is approximately 1,937 acres, with an average parcel size of 2.4 acres. From the larger Pine Barrens preservation perspective, these easement protected lands comprise approximately 3.52% of the statutorily defined 55,000 acre Core Preservation Area.

Credits Issued, Redeemed and In Circulation:

Since the start of the Program in 1995 (the first Credits were actually issued in 1996), 935.93 Credits have been issued (an increase of 9.44 Credits in 2013). Of these, 429.4 have been redeemed (46% of the issued Credits), while the remaining 506.53 Credits remain "outstanding" (i.e., issued but still in private hands and unredeemed). The Pine Barrens Credit Clearinghouse owns 10.19 Credits at this time that were purchased in 2011 through an offer made by the Clearinghouse to spend up to \$1 million to purchase Credits from Credit owners located in the Town of Brookhaven.

During 2013, 22 Credits were redeemed. The net inventory level of the outstanding Credits went down by 12.57 Credits, which slightly improved the ratio of redeemed to unredeemed credits.

Credit Sales and Prices Recorded:

There were 18.18 Credits sold during 2013, which represents an increase of 3.43 Credits when compared to the prior year, 2012. The average "per Credit" sales price was \$64K (with the range from \$53,000 up to \$85,000 "per Credit"). This reflects a decrease of \$10,000 from the overall 2012 average unit Credit price.

To place this in a historical perspective, this 2013 average unit price is close to the 2004 year

level. Finally, from the program's inception to 1/1/14, the PBC Program has recorded a grand total of almost \$36 million in private sales.

The complete history of Credit sale prices by year and by Town is available on the Clearinghouse web page:

http://www.pb.state.ny.us/pbc/pbc_credit_sales_1996_to_present.pdf

Program Summary Chart

The attached one page summary chart provides an overview of the PBC Program's activity and highlights the Program's information as discussed above.

Intermunicipal and Intertown Flows of Credits:

As of 1/1/14, a total of 70 Credits have crossed a municipal boundary (town or village) from their sending parcel to their receiving parcel, representing approximately 16% of all redeemed Credits, or approximately 1 in every 6 redeemed Credits. Of these, 12.83 Credits crossed municipal boundaries in 2013.

From a strictly intertown perspective, 46.22 of these 70 credits crossed a Town boundary, representing 10.8% of all redeemed Credits, or approximately 1 in every 9 redeemed Credits. 8.78 Credits crossed into another Town and 4.05 Credits crossed the village boundary in 2013.

All of the intermunicipal Credit transfers in 2013 were processed through the Suffolk County Department of Health Services for sewage flow intensity increases.

Clearinghouse Funds:

The Clearinghouse currently has approximately \$2.5 million in available funds which are administered by the Suffolk County Treasurer's Office. An end of year accounting of those funds is not yet available, but will be posted (http://www.pb.state.ny.us/pbc/sc_treasurers_report.pdf) when available. There were no new deposits or disbursements during 2013.

Easement Compliance and Enforcement (CAE) Activity:

The Commission's CAE Coordinator, working with our Land Use Division, has completed onsite inspections and baseline documentation reports for 784 of the 809 parcels enrolled in the Program, or approximately 97% of the parcels. In 2013, in the Town of Brookhaven, one easement violation was found which is currently under investigation. Numerous field conditions either unrelated to the easement provisions or affecting nearby parcels or road right of ways have been documented and addressed through the CAE Division's Incident Reporting (IR) System.

These formal Incident Reports are then tracked until the field condition is resolved, usually in close coordination with public lands managers, highway departments, parks departments, environmental conservation police, or other agencies. Typical conditions include clearing, dumping, off road vehicle violations, vandalism or public property damage, etc.

The complete list of parcels enrolled in the Program can be viewed at:
http://www.pb.state.ny.us/pbc/pbc_parcels.pdf

Policy Initiatives:

In 2013, the Town of Brookhaven adopted the Carmans River Conservation and Management Plan ("the Plan") to promote the protection of the Carmans River and its surrounding watershed area. The Plan contains numerous recommendations and strategies to protect the Carmans River watershed area which included the recommendation that 2,187 acres of land within this watershed area, consisting of 2,941 parcels, be included in the Central Pine Barrens Compatible Growth Area (CGA) and that 1,597 acres of land, consisting of 587 parcels, be included in the Core Preservation Area of the Central Pine Barrens. The addition of lands to the CGA comprise approximately 298 acres or 379 parcels which are currently vacant. For the lands added to the Core Preservation Area, approximately 486 acres, consisting of 322 parcels, are currently in private ownership and are potentially eligible for Pine Barrens Credits. The Town's Plan estimated that the expansion of the Core Area would generate approximately 135 additional Pine Barrens Credits.

To ensure the provisions of the Town's Plan related to expanding the Central Pine Barrens area within the Carmans River watershed area are implemented, the NYS legislature passed legislation in 2013 to amend the NYS Environmental Conservation Law Article 57, otherwise known as the Long Island Pine Barrens Protection Act.

In 2013, the Town of Brookhaven also revised its multi-family district zoning code to include requirements involving the redemption of credits.

The proposed amendment to the Central Pine Barrens Commission's Comprehensive Land Use Plan to establish a required level of Credit redemptions for development projects in the Compatible Growth Area which seek to increase their development level above which is permitted by current zoning is still pending before the Commission.

The terms for selling Credits held by the Clearinghouse are currently under discussion between the Commission and Clearinghouse board members.

Attachment

Program Summary Chart

Easement Protected Lands and Pine Barrens Credits As of January 1, 2014									
	Brookhaven	Riverhead	Southampton	Total	2011	2012	2013	2011-13	
Parcels	354	35	420	809	11	22	3	36	
Acreage	725.565	516.508	695.326	1937.399	4.33	9.97	32.56	46.86	
Average parcel size	2.05 ac	14.76 ac	1.65 ac	2.4 ac	-0.03	-0.06	0.04	-0.05	
Credits generated	468.57	172.29	295.07	935.93	3.33	4.36	9.44	17.13	
Credits redeemed	253.69	55.85	119.86	429.4	17.33	17.26	22	56.59	
Credits not redeemed	214.88	116.44	175.21	506.53	-14	-12.9	-12.57	-39.47	
Credits sold	429.66	136.97	222.67	789.3	29.34	14.75	18.18	62.27	
Total value of PBC transactions through this date	\$18,261,512	\$2,374,440	\$14,008,710	\$34,644,662	\$2,511,927	\$1,088,000	\$1,179,570	\$4,779,497.00	

Environmental Education and Outreach Division 2013

The Education and Outreach mission statement (revised December 2010):

"To promote stewardship through awareness, appreciation and understanding to Long Island residents of all ages on the critical role the Central Pine Barrens serves in maintaining their quality of life. This includes its species, landscapes, natural communities, groundwater protection, cultural and historical resources".



The purpose of the Education and Outreach Division is to promote stewardship through awareness, appreciation and understanding to Long Island residents of all ages on the critical role the Central Pine Barrens ecosystem plays in maintaining their quality of life. This includes its species, landscapes, natural communities, ground water protection, cultural and historical resources. The Division develops, coordinates and maintains programming on a regional basis. Services the Division provides includes:

- Organizes and works with the Environmental Education Advisory Committee
- Provides public outreach as a participant in local festivals, conferences and other events
- Works with the Pine Barrens staff on special Commission projects
- Provides Pine Barrens /Long Island Biodiversity teacher training opportunities for K-12 teachers
- Develops an annual Environmental Education and Outreach Plan
- Provides opportunities for engagement in Citizen Science
- Creates, organizes and presents Pine Barrens Ecology oriented K-12 educational programs
- Writes and distributes regular press releases and press advisories about newsworthy events
- Responds to media, telephone, and mail inquires pertaining to environmental education and outreach
- Develops and sustains partnerships to advance the mission of the Central Pine Barrens Commission
- Continues to develop new programming to promote educational and citizen science opportunities.

In 2013, Commission Education and Outreach Staff:

- Developed, implemented and performed environmental education programs for K-12 classes, research programs, higher education classes and outreach events, such as festivals and conferences. Staff developed a Pine Barrens Ecology program, Long Island Biodiversity program and a Wildfire Ecology program, as well as created other programs that can be readily adapted to fit any class or program needs. In 2013, the Division reached 29,171 citizens.

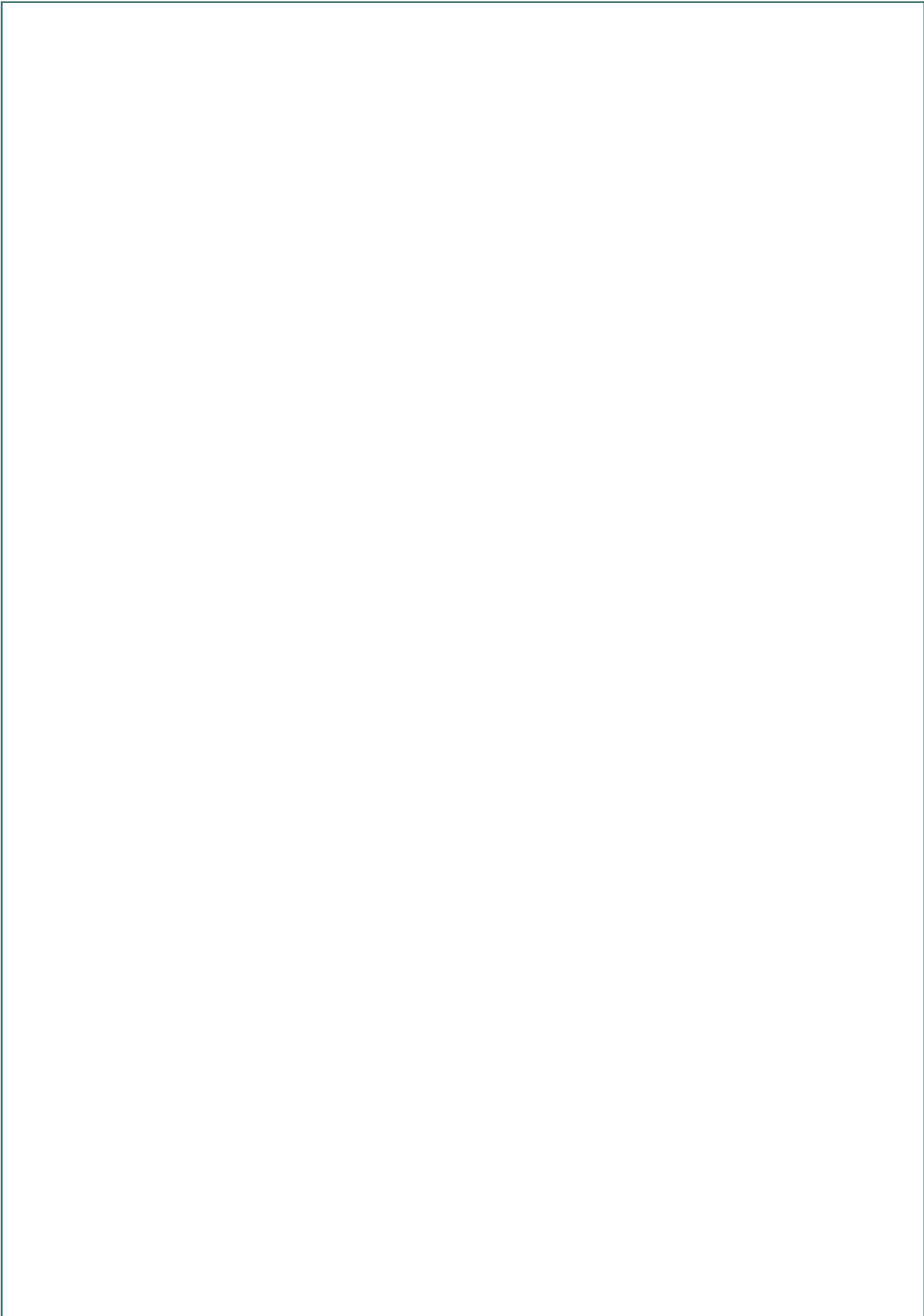


- Created, organized and directed an annual Summer Camp. This camp is in partnership with Wertheim National Wildlife Refuge and takes place at their state of the art Visitor's Center. In 2013, 160 campers enjoyed hands on learning about the Pine Barrens, interpretive hikes, seining, dock scraping, scientific explorations, various activities and other learning opportunities over a 6 week period each year.
- Created, organized and carried out a Pine Barrens Discovery Day event. This event is designed to educate families, students and other Long Island residents on the natural and cultural history of the Central Pine Barrens. Each year 14 workshops are held and 4 hikes are held, and over 25 partners provide outreach displays and interactive activities for the visitors. The event is held at Wertheim National Wildlife Refuge in Shirley in partnership with Wertheim's International Migratory Bird Day, and the Tri Hamlet Day celebration held in Mastic, Shirley and Mastic Beach. In 2013, there were over 1,000 visitors who attended this event.
- Improved education, research and historical programming with our International Twin ecosystem and Twinning's partner the *Parco Regionale Migliarino San Rossore Massaciuccoli* in Pisa Italy. Thanks to Brookhaven Science Associate funding, each year staff is able to connect high school students, university students, and natural history and ground water experts, and land use planners from both International parks to share and improve learning and research opportunities. Over 100 students from Istituto Tecnico Industriale in Pisa Italy and Longwood, William Floyd and Sayville High annually participate in web conferences throughout the school year to compare data collected from their local river systems.
- Developed and coordinated the Student Science Symposium for the Pine Barrens Research Forum.
- Developed, planned, coordinated and implemented "A Day in the Life of the Carmans River" in 2013. This one day student science field research and citizen science effort is in partnership with numerous agencies, organizations, scientists, educators and students. Teachers and students, along with experts, explored and collected data from 14 sites along the Carmans River, a 10 mile state designated scenic and recreational river, in the heart of the Pine Barrens. In 2013, 400 students and six schools collected data which is available for viewing on the "A Day in the Life of the Carmans River" website.
- Developed interpretive kiosks for the Dwarf Pine Trail. This project will be completed in 2014.
- During 2013, worked with the Wildfire Task Force to create a program on Firewise and the wildland urban interface and presented at various community and civic organizations.
- Spoke on behalf of the Central Pine Barrens Commission on Pine Barrens Ecology, "A Day in the Life of the Carmans River" and research projects at a variety of regional, national and international conferences and meetings. This included the Open Space Stewardship Program



annual gathering with Brookhaven National Lab, the Long Island Natural History Conference, New York State Outdoor Education Conference, North American Association of Environmental Education Conference, as well as participating in a roundtable at *Parco Regionale Migliarino San Rossore Massaciuccoli's Annual Festival*.

- Continued to generate successful partnerships with federal, state, town and local agencies and organizations to benefit Education and Outreach programs and the Central Pine Barrens Commission.



Research Programs

Annual Pine Barrens Research Forum

The Annual Pine Barrens Research Forum is sponsored by the Brookhaven National Laboratory, the Central Pine Barrens Joint Planning and Policy Commission, the Long Island Groundwater Research Institute at Stony Brook University and the Foundation for Ecological Research in the Northeast and is held at Brookhaven National Laboratory in Upton, New York, typically on the first Thursday and Friday in October. The Research Forum has a specific topical theme each year and culls speakers involved in significant research from various key scientific areas from all over the Country and Europe. Each year the Forum provides on its first day intriguing, in depth presentations on the latest scientific research being conducted by noteworthy scientists, informative displays and exhibits from local agencies and not for profit environmental research and protection organizations, and a poster session that provides a diverse array of research activities undertaken by students and others involved in the field of scientific research. The second day of the Forum provides a dynamic realtime student science educational research exchange through a web conference that is broadcast to schools both locally and abroad. A field trip is also held on the second day of the Forum that include trips to local ecological and research areas of interest on Long Island. Copies of the Research Forum proceedings, which include speaker abstracts, poster session, exhibits and display information, are available on request from the Commission's office by calling (631) 288-1079.

In 2013, there were approximately 140 participants who attended the presentations and poster sessions during the first day of the Research Forum. The diversity of topics are listed on the Research Forum brochure that follows this page. The field trip to the breach in the Fire Island National seashore coastline which was caused by Superstorm Sandy and created a new inlet was cancelled due to the federal government shut down.

The Student Science Symposium involved 3 schools and 65 students and observers and involved the discussion and comparison of field data collected along the Carmans River during the "A Day in the Life of the Carmans River" event in September. This teleconference included participation and discussion of data collected by students in Pisa, Italy that performed a similar data collection event along the Arno River in Pisa, Italy on the same day as the Carmans River event.

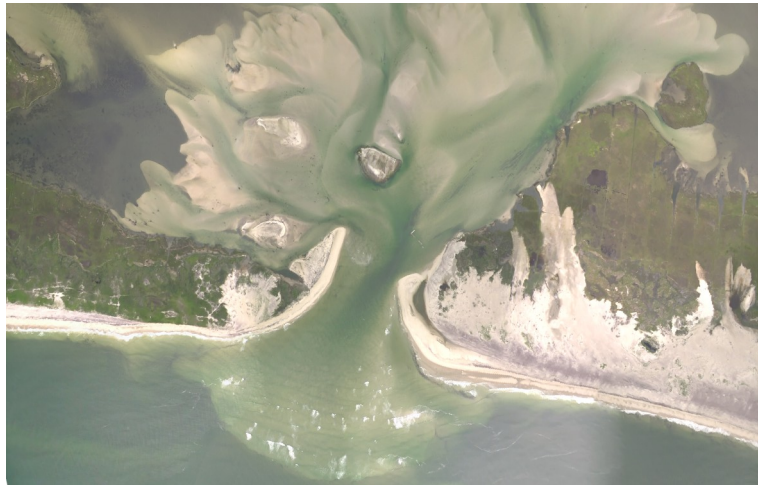
Eighteenth Annual Pine Barrens Research Forum

October 3 and 4, 2013

Brookhaven National Laboratory

Berkner Hall

Upton, New York



The New "Old Inlet"

Photo: Dr. Charles Flagg, School of Marine & Atmospheric Sciences, Stony Brook University

Sponsored by:

Brookhaven National Laboratory

Central Pine Barrens Joint Planning and Policy Commission

Long Island Groundwater Research Institute at Stony Brook University

Foundation for Ecological Research in the Northeast

TABLE OF CONTENTS

Agenda -Thursday, October 3 8:00 am 4:30 –pm	4
Berkner Hall Auditorium, Brookhaven National Laboratory (BNL)	
Displays & Exhibits -Thursday, October 3, 8:00 am 4:00 –pm	6
Berkner Hall Lobby, BNL	
Poster Session -Thursday, October 3, 8:00 am 4:00 –pm.....	7
Berkner Hall Lobby, BNL	
Student Science Symposium -Friday, October 8:00 4am 10:00 –am.....	8
Berkner Hall, Room B	
Field Trip - Friday, October 4 10:30 am 2:30 –pm.....	9
National Park Service Wilderness Visitor Center, Fire Island National Seashore	
Presentation Abstracts	11
Poster Abstracts	27

Thursday, October 3, 2013

Agenda

Berkner Hall Auditorium

- 8:00 am** **Coffee and registration**
- 8:30 am** **Welcome**
John W. Pavacic, Executive Director, Central Pine Barrens Commission
Doon Gibbs, Director, Brookhaven National Laboratory
Frank Crescenzo, Manager, Brookhaven Area Office, US Department of Energy
Peter A. Scully, Chair, Central Pine Barrens Commission, and Regional Director, NYS
Department of Environmental Conservation
- 9:00 am** **Forest recovery after the 2012 Crescent Bow Fire**
Kathy L. Schwager, ES&H Engineer, Environmental Protection Division, Brookhaven
National Laboratory
- 9:25 am** **Predicting and mitigating crown fire risk in the Albany Pine Bush wildland - ur-
ban interface**
Neil A. Gifford, Conservation Director, Albany Pine Bush Preserve Commission
- 9:50 am** **Local distribution factors and sampling effort guidelines for the rare frosted elfin
butterfly**
Amanda M. Dillon, Field Ecologist and Environmental Educator, Albany Pine Bush
Preserve Commission
- 10:15 am** **Break and Poster Session**
- 10:45 am** **Population response of the endangered Karner blue butterfly (*Lycaeides melissa
samuelis*) to recovery efforts at the Albany Pine Bush Preserve**
Steven P. Campbell, Conservation Biologist, Albany Pine Bush Preserve Commission
- 11:10 am** **Forest shows resilience to simulated hurricane**
Audrey A. Barker Plotkin, Site and Research Coordinator, Harvard Forest, Harvard
University
- 11:35 am** **Measuring storm tide and high-water marks from Hurricane Sandy in
New York**
Amy E. Simonson, Hydrologic Technician, New York Water Science Center, US Geo-
logical Survey

- 12:00 pm** **Lunch and Poster Session** (*lunch is on-your-own; cafeteria in Berkner Hall*)
- 1:30 pm** **Deer management on Long Island: Past, present, and future**
Joshua Stiller, Wildlife Biologist, NYS Department of Environmental Conservation
- 1:55 pm** **Bats of the Barrens**
Michael S. Fishman, Senior Managing Environmental Scientist, Barton & Loguidice, P.C.
- 2:20 pm** **Monitoring movement and passage of fish in the Carmans River**
Heidi N. O’Riordan, Aquatic Biologist, NYS Department of Environmental Conservation
- 2:45 pm** **Break and Poster Session**
- 3:00 pm** **Determining the ecological impacts of a large scale solar facility**
Jennifer L. Higbie, ES&H Engineer, Environmental Protection Division, Brookhaven National Laboratory
- 3:25 pm** **Solar development by design: Best practices for wildlife preservation and conservation**
Timothy M. Green, Natural and Cultural Resources Manager, Environmental Protection Division, Brookhaven National Laboratory
- 3:50 pm** **Open Space Stewardship Program: A model for school, community, and government cooperation**
Mel Morris, Educational Programs Administrator, Office of Education Programs, Brookhaven National Laboratory

DISPLAYS & EXHIBITS

Central Pine Barrens Joint Planning and Policy Commission

Melissa Griffiths

International Student Biodiversity Connection - River System Studies: Carmans River, Central Pine Barrens, and the Arno River, Pisa Italy

Melissa Griffiths

Central Pine Barrens Joint Planning and Policy Commission

Invasive Species: Emerald Ash Borer and Asian Longhorned Beetle

Anne Rode

New York State Department of Agriculture

Long Island Native Plant Initiative

Polly Weigand

Long Island Native Plant Initiative

Open Space Stewardship Program

Melvyn Morris

Office of Educational Programs, Brookhaven National Laboratory

Peconic Estuary Program

Alison Branco and Julie Nace

Peconic Estuary Program (Suffolk County, US EPA and NYS DEC)

Rescuing Marine Mammals and Sea Turtles in New York

Valentina Sherlock

The Riverhead Foundation for Marine Research and Preservation

Quogue Wildlife Refuge

Brendan Dickson

Quogue Wildlife Refuge

POSTERS

Acoustic identification of Chiroptera species in eastern Suffolk County and Brookhaven National Laboratory using full spectrum call analysis

Brookhaven atmospheric tracer sampler: Urban atmospheric dispersion study

Dermal penetration of alumina, ceria, silica, and titania nanoparticles

Documenting the occurrence of Carolina Bays on Long Island

The effect of fires on soil pH in the Long Island Pine Barrens

Effect of road activity on soil pH near a two-lane road and the Long Island Expressway in Manorville, NY

An evaluation of six naturally occurring contaminants collected under NJ's Private Well Testing Act

Evaluating small mammal diversity within the Long Island Solar Farm at Brookhaven National Laboratory Upton, New York

Evidence for island biogeography in the Long Island southern flying squirrel (*Glaucomys volans*) population using the mitochondrial cytochrome-b gene

The fabrication and use of silver nanoparticle as a catalyst

Gestation and nest site selection impacts on eastern box turtle home range

The influence of New York City urban soils on native tree seedling growth and survival

Laser target motion control and synchronization

Monitoring the bird population at Brookhaven National Laboratory by using point count bird surveys

Phase shift full bridge power converter analysis and test fixture design

The responses of salt marsh creeks and ditches when exposed to a spatial gradient of nitrogen concentrations over an interval of decades

Shedding light on herpetofauna: The state of herpetofauna populations within the Long Island Solar Farm at Brookhaven National Laboratory

Tick population analysis and the use of 4-poster devices by white-tailed deer (*Odocoileus virginianus*)

The use of mark-recapture techniques to study migration and population densities of Odonate species on a utility scale solar farm

Water Quality Bay Study, Town of Hempstead

Litigation Involving the Commission

Through the years the Central Pine Barrens Commission has been involved in various litigation matters that either challenged the Long Island Pine Barrens Protection Act, a decision made by the Commission on a development project, or the Pine Barrens Credit allocation received by a private landowner from the Credit Clearinghouse. At times the Commission has also been included in other litigation matters involving other parties. The table that follows this page tracks the litigation since 1996 that has involved the Commission in some manner. This table is located on the Commission website at http://pb.state.ny.us/legal/chart_litigation.htm where access to the decision information is available.

Litigation Involving the Pine Barrens Commission
Through December 2013

Sequence Number		Plaintiff(s)	Defendant(s)	Court and Index Number	Date Filed	Date Decided
1	Nondevelopment decision of 2/9/94 re Longwood Youth Sports Association proposal at Firemen's Park, Ridge, Brookhaven	LI Pine Barrens Society, Richard Amper, North Fork Environmental Council, Long Island Group of the Sierra Club, Open Space Council, Act Now!, Desiree Passantino, Joseph Colao	Commission	Supreme Court, Suffolk County 94-5363	3/11/94	4/28/98 (decision)
2	Parcel inventory and property owner notification	W.J.F. Realty Corp., Reed Rubin	Commission	Supreme Court, Suffolk County 94-8132	4/8/94	11/17/94 (decision)
3	Statutory challenge to Pine Barrens Protection Act	W.J.F. Realty Corp., Reed Rubin	Commission, State of New York, Langdon Marsh, NYS DEC, Suffolk County	Supreme Court, Suffolk County 94-22784	9/19/94	4/22/98 (decision)
4	Economic analysis	LI Builders Institute	Commission	Supreme Court, Suffolk County 95-11218	5/12/95	5/22/95 (decision)
5	Parcel inventory	Siegel Fenchel & Peddy	Commission, Raymond Corwin	Supreme Court, Suffolk County 95-29078	12/6/95	4/18/97 (decision)
6	Statutory challenge to Pine Barrens Protection Act	Henry Dittmer, et al.	Commission, Suffolk County, Brookhaven Town, Riverhead Town	US District Court for Eastern District of NY 96-2206	5/3/96	2/21/02 (decision) <i>Also see 2/28/03 2nd Circuit Summary Order</i>
7	Commission approval of 8/26/96 re Marando (Manorville) Nurseries project, Brookhaven	LI Pine Barrens Society, Richard Amper, Peter Maniscalco, John Scully, Leslie Hannelin	Commission	Supreme Court, Suffolk County 96-24091	9/18/96	2/10/98 (decision)
8	6/24/98 Pine Barrens Credit allocation to parcels in Manorville and Middle Island, Brookhaven	Robert I. Toussie	Commission	Supreme Court, Suffolk County 98-17135	7/22/98	5/26/1999 (decision)
9	Nondevelopment decision of 5/12/00 re horse arena in Core, Manorville, Brookhaven	LI Pine Barrens Society, Richard Amper, Katherine Forster Sereven, Frank P. Foster, John Trocchio, Richard and Pamela Gatz, Anna Marie Forster Czamecki, Pamela Todaro	Commission, Carolyn Jolly d/b/a Hidden Pond Stables	Supreme Court, Suffolk County 00-14222	8/8/00	3/19/01 (decision) Entered 11/20/01
10	Nondevelopment decision of 7/12/00 re horse arena in Core, Manorville, Brookhaven	LI Pine Barrens Society, Richard Amper, Kenneth and Irene Kneski, Stanley and Genevieve Horton	Commission, Sloane Marcus, Maria Hickey	Supreme Court, Suffolk County 00-19896	8/9/00	3/20/01 (decision) Entered 6/11/01
11	Statutory challenge to Pine Barrens Protection Act	Walter Olsen, et al.	NYS DEC, et al.	Supreme Court, Albany County 01-3600	6/22/01	5/7/02 (decision) <i>Also see 7/24/03 3rd Department Decision</i>
12	Statutory challenge to Pine Barrens Protection Act	Gladys Gherardi et al.	State of NY, et al.	US District Court for Northern District of NY; 01-1066	6/28/01	12/11/03 (decision) <i>Also see 12/22/05 2nd Circuit Summary Order</i>
13	7/10/02 Firemen's Park Core hardship permit, Ridge, Brookhaven	LI Pine Barrens Society, Richard Amper, Carole Jones, Paul J. Decker, Eric Burke, Yolanda Susi, Joseph P. Walsh, Kim Darrow	Commission, Brookhaven Town Parks Department, Joseph Callani, Frank Vigliarolo	Supreme Court, Suffolk County 02-20643	8/7/02	2/26/03 (amended decision)
14	Assertion of jurisdiction of 3/20/02 re Spring Meadow subdivision, Wading River, Brookhaven	Spring Meadow Enterprises	Commission	Supreme Court, Suffolk County 02-20765	8/9/02	2/11/03 (decision)
15	Field Day Music Concert, Calverton, Riverhead	LI Pine Barrens Society, Richard Amper, Neighborhood Network Research Center, Neil Lewis, North Fork Audubon Society, Mary Mulcahy, North Fork Environmental Council, Howard Meinke, North Shore Audubon Society, Jennifer Wilson Pines, Open Space Now, Alex Wipf, Wayne Rambo, Scott Neary, Margaret Caputo, Robert and Joyce Moss, Louis Fastore	Riverhead Town, Riverhead Town Community Development Agency, Suffolk County Health Department, Commission, New York Music Festival, Andrew Dreskin, Andrew Dreskin Investments	Supreme Court, Suffolk County 03-13625	5/27/03	5/30/03 (decision)

16	Development decision of 6/21/06 re clearing for agriculture in Core for Manorville Estates Winery, Brookhaven	Gladys Gherardi	Commission	Supreme Court, Suffolk County 06-17693	7/19/06	8/1/07 <i>(decision)</i>
17	Southaven County Park trap and skeet range, Yaphank, Brookhaven	LI Pine Barrens Society, Richard Amper, South Yaphank Civic Association, Johan McConnell, John Del Buono, Howard Carpluk Sue Davis, Douglas Steigerwald	Commission, Suffolk County, Hunter Sports Shooting Grounds	Supreme Court, Suffolk County 06-22354	8/11/06	5/2/07 <i>(decision)</i> <i>(Also see 10/7/08 2nd Department decision)</i>
18	Assertion of jurisdiction of 7/19/06 re Island Water Park, Calverton, Riverhead	Island Water Park Corp., Eric Scott	Commission, Town of Riverhead	Supreme Court, Suffolk County 06-21016	8/17/06	4/3/07 <i>(decision)</i>
19	Assertion of jurisdiction of 4/18/07 re Riverhead Town Recreational Facility, Calverton, Riverhead	Riverhead Town, Riverhead Community Development Agency	Commission	Supreme Court, Suffolk County 07-14186	5/3/07	1/30/08 <i>(decision)</i> <i>and 3/31/08 judgment)</i> <i>(Also see 3/2/10 2nd Department decision)</i>
20	Pine Barrens Credit allocation to parcel in Southampton	Edwin Tuccio, Patricia Tuccio	Commission, Clearinghouse	Supreme Court, Suffolk County 07-21497	7/19/07	1/16/08 <i>(decision)</i> <i>(Also see 11/4/09 2nd Department decision)</i>
21	Pine Barrens Credit allocations to parcels in Manorville (Brookhaven)	Ringhoff Family LLC #1	Commission	Supreme Court, Suffolk County 08-26991	7/17/08	4/8/09 <i>(decision)</i>
23	Commission jurisdiction re development proposal	Robert Liere, John Liere, and Lorraine Liere	Commission	Supreme Court, Suffolk County 09-5910	3/12/09	10/13/10 <i>(decision)</i>
24	7/21/10 American Physical Society hardship permit, Ridge, Brookhaven	LI Pine Barrens Society, Richard Amper	Commission	Supreme Court, Suffolk County 29130/2010	7/21/10	9/26/11 <i>(decision)</i>
25	Article 78	Edwin Fishel Tuccio, Patricia Tuccio	Commission	Supreme Court, Suffolk County 28576/2010	9/20/10	1/12/12 <i>(decision)</i>
26	Failure to process plaintiff's as of right subdivision application	Brush Development LLC	Town of Brookhaven, Commission	US District Court for Eastern District of NY CV-113297	7/8/11	Pending
27	JCIC Holding Company hardship permit, Hampton Bays, Southampton	LI Pine Barrens Society, Richard Amper	Commission	Supreme Court, Suffolk County 22619/2011	2/16/12	3/22/12 <i>(decision)</i>
28	Article 78	Wainscott Properties Inc.	New York State Department of Environmental Conservation, Commission	Supreme Court, Suffolk County 12-27600	9/6/12	11/13/13 <i>(decision)</i>
29	Westhampton Property Associates hardship permit, Speonk, Southampton	LI Pine Barrens Society, Richard Amper, Robert McGrath, Thomas Casey as members of the Board of Directors	Commission	Supreme Court, Suffolk County 12-34735	12/31/12	Pending
30	Pine Barrens Credit Program	Pluralis, LLC	Commission, Town of Brookhaven	Supreme Court, Suffolk County 13-15979	6/19/13	Pending

Staff and Contact Information

Division & Principal Staff Contacts	
Administration	<i>John W. Pavacic</i> <i>Judy Jakobsen</i> <i>Carol Sholl-Ostrowski</i> <i>Kathy Delligatti</i>
Compliance & Enforcement	<i>Lawrence Hynes</i>
Education & Outreach	<i>Melissa Griffiths Parrott</i>
Land Use & Planning	<i>Julie Hargrave</i>
Legal	<i>John Milazzo</i>
New York Wildfire & Incident Management Academy	<i>Kathy Delligatti</i> <i>John W. Pavacic</i>
Pine Barrens Credit Program	<i>Jerry Tverdy</i> <i>John Milazzo</i> <i>Carol Sholl-Ostrowski</i> <i>Judy Jakobsen</i>
Science & Stewardship	<i>Ann Carter</i>

Office Location & Contact Information

624 Old Riverhead Road (CR 31)

Westhampton Beach, NY 11978

Voice: 631-288-1079

Fax: 631-288-1367

Ray Corwin Pine Barrens Reference Library

(open to public, non- lending)

www.pb.state.ny.us info@pb.state.ny.us

Office & Library access hours: Monday—Friday 8:30 am to 5:00 pm

