

**Central Pine Barrens
Joint Planning and Policy Commission**



2009 and 2010 Report



Office Location & Contact Information

624 Old Riverhead Road (CR 31)

Westhampton Beach, NY 11978

Voice: 631-288-1079

Fax: 631-288-1367

www.pb.state.ny.us

info@pb.state.ny.us

Central Pine Barrens Joint Planning and Policy Commission

Peter A. Scully, Commission Chair, Governor's Appointee,
and Regional Director, NYS Dept. of Environmental Conservation

Lori Baldassare, Member and Brookhaven Town Deputy Supervisor/
Acting Supervisor (January through March 2009)

Mark J. Lesko, Member and Brookhaven Town Supervisor (April 2009 through
2010)

Designated Representatives: Brenda Prusinowski, John Turner

Philip J. Cardinale, Member and Riverhead Town Supervisor (2009)

Sean M. Walter, Member and Riverhead Town Supervisor (2010)

Designated Representatives: Daniel McCormick, Richard Hanley

Linda A. Kabot, Member and Southampton Town Supervisor (2009)

Anna E. Throne-Holst, Member and Southampton Town Supervisor (2010)

Designated Representatives: Martin Shea, Jefferson Murphree

Steve A. Levy, Member and Suffolk County Executive

Designated Representatives: Carrie Meek Gallagher, Thomas Isles

Staff

(from the Suffolk County Water Authority)

Ann Carter

Raymond Corwin

Karen Eichelberger

Melissa Griffiths

Julie Hargrave

Lawrence Hynes

Judith Jakobsen

John Milazzo

Robin Mills

John Pavacic

Jerry Tverdyy

REPORT CONTENT

This document contains activity reports on the following Central Pine Barrens matters including committees, councils and divisions for 2009 and 2010:

Dedication to Raymond P. Corwin

John W. Pavacic, New Executive Director

Pine Barrens Advisory Committee

Protected Lands Council

Land Use and Planning

Science and Stewardship

Compliance and Enforcement

Pine Barrens Law Enforcement Council

Wildfire Task Force

Pine Barrens Credit Program and Clearinghouse Report

Environmental Education and Outreach

Research and Park Twinings

Summary Chart for Litigation

Staff and Contact Information

Dedication

Raymond P. Corwin, Executive Director (1993–2010)



Raymond P. Corwin

This report is dedicated to the Commission's first Executive Director, Raymond Corwin, who passed away suddenly on April 5, 2010. The Commission, its staff and everyone who has been involved in the work of the Pine Barrens has been deeply affected by the sudden loss of this great man who was extremely dedicated to the protection and stewardship of the Pine Barrens.

Ray left his mark on all who knew him, with his warm smile, quick humor, gentle demeanor and keen ability to work with anyone. This brief retrospective on Ray provides a small glimpse into the Pine Barrens legacy that Ray helped to create and leaves behind for all of us now and for future generations to treasure and enjoy. He had a true passion and dedication for his work, working long hours to get the job done in perfect detail.

Ray was deeply involved in the Pine Barrens protection effort from the beginning and once the Pine Barrens Act was passed, it was unquestioned that he should be selected as the first Executive Director. Ray's knowledge of the Pine Barrens was boundless based on his life experience and passion for the environment. Before serving as the Executive Director of the Commission, he was on the board of the Long Island Pine Barrens Society and the Long Island Greenbelt Trail Conference (LIGTC). He continued to serve as an active member of LIGTC and was a long time Suffolk County Parks Trustee where he helped to create and maintain many trails and parks with his colleagues throughout Suffolk County such as the Pine Trail Preserve, the Paumanok Path, and the Brookhaven Trail, to name just a few.

His professionalism, knowledge and dedication to the Pine Barrens was exemplary and the legacy of the Pine Barrens he helped to create lives on through the work he performed for seventeen years as the Executive Director of the Commission. This historic and momentous environmental legacy known as the Central Pine Barrens was captured through the years thanks to Ray's meticulous recordkeeping, hundreds of reports he carefully wrote or edited, thousands of meetings he attended and his wonderful and amazing knowledge of the Pine Barrens he would share with others through conversation, field trips and his beautiful photography.

What truly epitomized Ray in terms of his approach to carrying out the work of the Pine Barrens Commission was his amazing ability to foster interagency coordination among the various agencies, and team work among the numerous councils, committees and local civic and user groups involved in the Central Pine Barrens. He believed in "there is no "I" in team work" which spoke volumes about Ray, as he was a humble man who never looked for credit or recognition for himself. He realized the work of the Commission could not be carried out without the efforts of all involved in the stewardship and protection of the Pine Barrens.

His tireless efforts show in the work of the various Commission councils, including the Protected Lands

Council and the Law Enforcement Council, which he galvanized into action once the Commission's Comprehensive Land Use Plan was completed and later the Wildfire Task Force that was created after the 1995 wildfires. He recognized that these Councils had to help carry out the management, protection and stewardship of the Pine Barrens beyond political boundaries, in a broader regional context that the Central Pine Barrens represented. He made sure he attended every Council meeting or event, with few exceptions, to show his support of their various efforts and the people involved in carrying out this work, whether it was invasive species removals from woods and lakes, tree plantings, abandoned vehicle lifts and water bucket training with the Army and Air National Guards, the ATV damage mitigation project or any of the numerous Commission or partner related event or activity.

Ray meticulously captured the history of the Commission and its work in perpetuity by tirelessly cataloging all Pine Barrens related information, ranging from meeting minutes to news clips, in the Commission's library which he created. His avid "bean counting" of various program statistics like the Credit Clearinghouse Program kept everyone in the know as to the status of these programs and their successes. He realized how important it was that the public had ready access to Pine Barrens-related information and posted as much information as he could on the Commission's web site daily to make it available to the public. He greatly appreciated his staff and treated them with great respect and professionalism. Staff kindly and warmly remember his wonderful sense of humor, his deep appreciation and the respect he showed them.

His legacy will live on through all who continue to be involved in the work of the Commission and the Central Pine Barrens, and in doing so his vision for the Pine Barrens will be realized in the years to come. Anyone who wishes to experience the Pine Barrens legacy that Ray helped to create and preserve need only to take a moment to attend a Council meeting, Commission meeting, PLC work day, or simply, drive eastward into the Pine Barrens region and stop and take a hike on one of its many trails. Ray likely had a hand in creating or maintaining it through his work with the Long Island Greenbelt Trail Conference or likely hiked it many times, as he captured nature's moments and beauty with his camera.

Ray Corwin will be sorely missed, and the Commission, its staff and Council members will continue his work into the New Year and beyond to honor his memory.

John W. Pavacic Joins Central Pine Barrens Commission as the New Executive Director

John Pavacic accepted the challenge to advance the important mission of the Commission after the passing of its first Executive Director, Ray Corwin, who he knew and deeply respected. Mr. Pavacic was hired by the Suffolk County Water Authority and approved by the Commission to serve as the new Executive Director in June, 2010. His educational background includes a Bachelor of Science Degree from Union College in Schenectady and a Masters of Science Degree from SUNY College of Environmental Science and Forestry in Syracuse.



John. W. Pavacic

Photo courtesy of the Pine Barrens Society.

He has spent over 24 years of his career committed to serving the public and protecting the environment as evidenced by the various governmental jobs he has held at Brookhaven Town, the NYS Department of Environmental Conservation and the Suffolk County Parks Department. His government service began in 1986 in the Town of Brookhaven, where he served as the Assistant Environmental Protection Director, Acting Manager of the Town's Natural Resources Bureau and as an Environmental Planner. In 1997, he left the Town and began working for the NYS Department of Environmental Conservation as the Regional Permit Administrator for 10 years. Then in 2007, he was appointed as the Commissioner of the Suffolk County Department of Parks, Recreation and Conservation by Suffolk County Executive Steve Levy prior to being hired as the Commission's new Executive Director.

Mr. Pavacic has been involved since the beginning with the efforts to protect the Central Pine Barrens and served on a variety of committees involved in the initial preparation of the Comprehensive Land Use Plan for the Pine Barrens. He has most recently served as co-chair of the Commission's Protected Lands Council. His extensive experience; vast knowledge of cultural, historic and natural resources and commitment to the protection of these resources, and keen policy making, leadership and program implementation skills will facilitate the ability of the Commission to carry out its work in the years to come.

Central Pine Barrens Joint Policy and Planning Commission Advisory Committee Report for 2009 and 2010

Chair: Stephen M. Jones, Chief Executive Officer, Suffolk County Water Authority (former)

Vice Chair: Richard L. Amper, Executive Director, Long Island Pine Barrens Society

The Advisory Committee (AC) was created by NYS ECL Article 57 ("Pine Barrens Law") which specified the 24 member organizations by name and allowed up to 28 members. The committee membership is represented by a balance of environmental, civic and builder groups whose purpose is to actively assist and advise the Central Pine Barrens Joint Planning and Policy Commission ("the Commission") in the implementation and revision of the Central Pine Barrens Comprehensive Land Use Plan.



Mr. Stephen Jones accepting a Certificate of Appreciation from Mr. John Pavacic, Commission Executive Director, at the Annual Cooperators Meeting

This report covers the period of 2009 through 2010 during which the Advisory Committee actively engaged in various activities, in accordance with its "advisory" role specified by the Pine Barrens Law, to assist the Commission in its efforts.

2009

During 2009, the Advisory Committee (AC) was very active, principally focusing on examining the roles and responsibilities of the various volunteer committees that were either created prior to or after the Comprehensive Land Use Plan (CLUP) was drafted.

This examination was for the purpose of advising the Commission as to whether: 1) any committees had outlived their usefulness; 2) whether any committees should be reconstituted or reinvigorated; and 3) whether any additional committees should be created or modified.

This review process included an examination of the written record of the committees, the actions they had taken, Commission actions regarding any committees, and presentations by various committee members and staff at AC meetings. Various discussion documents and drafts of resolutions proposing committee recommendations were considered by the Commission.

Actions taken by the AC at the end of this review process included:

- Passing a resolution that made specific recommendations to the Commission on:
 - ⇒ ways to reinvigorate and modify the Protected Lands Council (PLC) and its relationship to the Science and Stewardship subcommittee of the Commission.

- specific operational and organizational recommendations for the **Wildfire Task Force (WTF)**, related to its mission, and its relationship to the New York Wildfire and Incident Management Academy.
- specific operational and organizational recommendations regarding the NY Wildfire and Incident Management Academy, its mission and its relationship with the WTF.
- the Credit Clearinghouse and its use and marketing of PBCs.
- the Law Enforcement Council and its relationship to staff enforcement functions, as well as regional and local enforcement functions.

The AC also provided advice to the Commission on: 1) planning for the Carmans River watershed and 2) the proposed mandatory use of Pine Barrens Credits (PBCs) that would be required by local land use authorities for projects that would increase density or intensity above what is allowed by current zoning in the Compatible Growth Area (CGA).

Discussions were also held during AC meetings on the form and content of Environmental Education initiatives and the PV solar panel array ("solar farm") proposed on a wooded portion of Brookhaven National Laboratory. Further action will be taken on these and other matters in the New Year.

2010

The AC was involved in reviewing particular development projects in the Central Pine Barrens and made specific recommendations to the Commission concerning these projects. These projects included:

BP Solar Farm Project at Brookhaven National Laboratory, Upton, NY

The proposed project would provide LIPA with up to 32 MW Alternating Current (AC) of solar energy on Brookhaven National Laboratory property, connected to the adjacent LIPA substation. The project will consist of two large-scale solar arrays, a Laboratory-dedicated array of 1 to 2 MW, and a solar research facility. The AC passed a resolution that recommended that the Commission support the project; however, they also expressed their concern with the clearing of 150 acres of trees. The AC formed a subcommittee to work on improvements to the proposed mitigation measures for this project.

Development Projects that received prior Commission waivers and proposed either Sanitary or Pine Barrens Credit Use

The AC passed three resolutions in response to their review and discussion of two projects that were before the Commission for a second hardship waiver, and which proposed the use of sanitary credits from outside of the Compatible Growth Area (CGA) to increase onsite density in the CGA in one case and in the other case use Pine Barrens Credits to increase intensity in the Core Preservation Area. The first resolution made a recommendation to the Commission to only grant waivers that were consistent with the Pine Barrens Act and were for minimum relief. The second resolution recommended that the Commission not allow sanitary wastewater credits or development rights from outside of the Pine Barrens to be used for projects to increase density or intensity in the Core or CGA. The third resolution was to deny the hardship waiver applications for these two projects.

The AC continued in its role in 2010 to assist and advise the Commission in the implementation and revi-

sion of the Central Pine Barrens Comprehensive Land Use Plan (Plan Amendments) through:

- their review of the proposed Comprehensive Land Use Plan Amendments for Chapters 4, 5 and 6 and all new changes made to these chapters since their initial review in 2009. These included revisions to definitions, new Critical Resource Areas (CRAs), changes to Development of Regional Significance criteria, guidelines to become standards, and new standards added for wildfire hazard mitigation and migratory bird protection. The AC passed resolutions to recommend all of the proposed Plan amendment changes to the Commission, and
- their discussions on Sections 9.2 and 9.3 of the Comprehensive Land Use Plan that pertain to the Calverton redevelopment policies and North Shore Properties policies, respectively, and they passed a resolution that both these sections be stricken from the Plan.

Change in AC Chair

At the May 12, 2010 Meeting, Mr. Stephen Jones, SCWA CEO and AC Chair since 2001, stepped down as the AC Chair and Mr. Jeffrey Szabo, the new SCWA CEO, was voted in as the new AC Chair.

Protected Lands Council

Tom Casey, Chair and Tim Green Vice Chair (2010)

Charles T. Hamilton, and John W. Pavacic, Co-Chairs (2009)

Reorganization of the Protected Lands Council (PLC)

The goals with which the Pine Barrens Plan charges the Council are broad and ambitious, but material resources and the time its members had to devote to this work beyond their normal duties were always in short supply. Consequently, this resulted in good intentions but limited the ability to carry out the work related to the PLC's mission. Internal discussions on the direction of the group ultimately led to a Pine Barrens Advisory Committee resolution to recommend to the Commission that the PLC be reorganized. The Commission passed a resolution on October 21, 2009 that agreed with the AC's recommendation.



Deep Pond at Camp Wauwepex

The reconstituted PLC would no longer make a distinction between voting (*i.e.*, agency) and non-voting (*i.e.*, user group) members. The new structure would now encourage more equal and informal discussions, via the Roundtable, providing an opportunity for an exchange of information on problems facing the various PLC participants and to discuss what has been accomplished.

Whereas past meetings were always co-chaired by representatives from the D.E.C. and Suffolk County Parks, the resolution also called for an elected Council Chair, with a term of one year and an option for a second. In 2009, Chuck Hamilton, representing NYSDEC, and John Pavacic, representing Suffolk County Parks, were co chairs. In 2010, the Chair was Tom Casey, representing the L.I. Greenbelt Trail Conference, and the Vice Chair was Tim Green, PhD., representing Brookhaven National Laboratory.

The Council would now rotate its meeting locations to include venues such as Brookhaven National Laboratory (BNL), Southaven County Park, Brookhaven Town Hall, Camp Wauwepex, the Commission Office in Great River, Quogue Wildlife Refuge, and the Suffolk County Water Authority facility in Coram. The Council also conducted field work sessions during 2009 and 2010.

ATV and Dumping Mitigation Project

As part of an ongoing PLC project begun several years ago, the PLC has explored the perimeter of a 5,700-acre tract of land from Route 104 to Sears-Bellow Park, between Routes 24 and 27; identified over two dozen places where ATVs and dumpers were entering protected land; and constructed barriers, largely from snow fencing and on-site tree deadfall.

With the assistance of the Long Island Pine Barrens Society, the Commission published an educational brochure which was distributed to residents in the project area explaining how illegal riding and dumping adversely affects open spaces and asked for their help in reporting illegal activity, which resulted in a number residents phoning in ATV incidents.

Monitors continue to patrol the barriers that have been erected and make repairs as necessary. Special thanks goes out to all who contributed to the success of this project, especially Jim Mesenbourg (OPRHP) and Hernando Cardenas (OPRHP) who, in addition to patrolling frequently, hold the record for maintenance of the project. Many thanks also to Larry Paul (TNC), who continues to walk everywhere in the Pine Barrens and report on its conditions.

There has been mixed results with the effectiveness of some of the prevention measures used to block ATV access, with some barriers holding and others being repeatedly breached, but overall the project has a beneficial effect, and the PLC continues to explore ways of improving it. Sgt. Art Pendzick (SC Park Police) participates in PLC work outings and reports regularly on the activities of the Law Enforcement Council. The LEC's "sting" operations have resulted in a noticeable decrease in ATV riding. Although there is still a problem with local users, far fewer trailers pulling ATVs and dirt bikes eastward are seen on the L.I.E. This work would be easier if illegal ATV use became a misdemeanor, and the PLC supports that change in the law.

The PLC presented a report on the ATV Damage and Dumping Mitigation Project to the Commission on April 21, 2010, with recommendations for enhancing the work and expanding it to other areas in the Pine Barrens and the need for adequate funding.

Upper Carmans River- Stewardship of Public Lands

In 2010, the PLC focused on making recommendations for the management of the upper Carmans River watershed. They examined maps, visited various sites in the area, and discussed at length ideas regarding management and public access, with the results of this work compiled into a report that was presented to the Commission on January 19, 2010. The report presented specific recommendations that included the creation of a network of trails connecting existing public parcels and extending beyond the area. One trail would provide a north-south corridor running from the Paumanok Path to Southaven Park and the South Shore, roughly paralleling a trail Ray Corwin envisioned decades ago. Another would connect this trail to an east-west route extending to Brookhaven Town Hall, with still others potentially connecting to Longwood Library, downtown Yaphank and points north.

The report also included suggestions for improving the scenic and cultural resources in the area, to better connect the community to open spaces and create a more attractive historic district, and the desire to have uniform signage, improve access and management, so that someday the Pine Barrens Preserve as a whole affords visitors a unique "sense of place" similar to what is experienced in the Adirondack and Catskill preserves.

There was also a recommendation that a central repository for databases, management agreements and



other records be established in one location, both physically and online. This would allow all stakeholders easy access to adopt-a-trail agreements, resource inventories and other information, thus fostering cooperative management and user group participation.

Recommendations for Future PLC Activity:

- 1) The PLC hopes to expand their work on ATV mitigation and refine their Carmans River recommendations into specific projects.
- 2) All of the accomplishments of the PLC have resulted from cooperation among agencies and user groups. They will continue to foster this spirit and to seek means of saving through sharing.
- 3) As noted above, uniform regulations on signage, access and management remain priorities.
- 4) The PLC will seek funding for needed work on the landscape, invasive species mapping and removal, wetlands enhancement, forest management, prescribed fire, the restoration of a fire tower, etc.
- 5) The success of the ATV brochure encourages the PLC to continue its efforts to educate the public, in particular neighborhoods adjacent to protected lands, on appreciating the wonderful Pine Barrens.
- 6) Last but not least, the PLC will try to re-engage past members who have ceased participating in the PLC. Many hands make light work.

Much gratitude was offered to all who have aided in the work of the PLC.

Land Use and Planning Division

The purpose of the Land Use Division is to ensure the use of land within the Central Pine Barrens area conforms to New York State Environmental Conservation Law (ECL) Article 57 and the Commission's Comprehensive Land Use Plan (the "CLUP") and to guide its development. The Division provides both long range and short range planning on a regional basis for the Central Pine Barrens area. Other services the Division provides include:

- Reviews and processes Commission permit applications.
- Reviews town and other agency land use management plans for conformance to ECL Article 57 and the Plan.
- Prepares State Environmental Review Act (SEQRA) documents and performs SEQRA coordination with other agencies.
- Researches and drafts land use policies to guide the Commission.
- Provides recommendations to Commission Councils, Advisory Committee, and Towns on land use matters and policy under the Commission's purview.
- Supports the Compliance and Enforcement Division with the investigation of land use incidents and violations, and the monitoring and review of Commission permit conditions and conservation easements for conformance.
- Serves as the liaison to the public and government agencies on inquiries related to land use and development in the Central Pine Barrens and jurisdictional inquiries.
- Prepares Comprehensive Land Use Plan amendments.
- Communicates and meets with applicants.
- Prepares materials including staff reports and exhibits for public hearings.
- Follows-up on compliance with conditions of approval, filing requirements, and restoration activities.
- Tracks pending projects, referrals, and litigation.
- Updates the Commission website with land use development information, status of applications, and project statistics.



Star Gazer, Eastport

During 2009 and 2010, the Commission's Land Use Division Staff:

- Monitored and reviewed development projects in the Central Pine Barrens Area for compliance with ECL Article 57 and the Commission's Comprehensive Land Use Plan by:
 - ⇒ Providing comments on SEQRA coordination referrals from the three Towns in the Central Pine Barrens (Brookhaven, Riverhead, and Southampton), Suffolk County, and State agencies, including DEC. In 2009, approximately 59 referral applications were received, and in 2010, approximately 20 referrals were received.
 - ⇒ Reviewing Town Land Use and Hamlet Plans for conformity to ECL Article 57 and the CLUP.
 - ⇒ Responding to daily inquiries and requests for information related to land use, planning, and development matters in the Central Pine Barrens.

- Continued to work on the Comprehensive Land Use Plan amendments; reviewing and updating existing development provisions.
- Participated in meetings with Commission Designated Representatives and technical staff to review proposed ministerial amendments prior to presentation to the Commission in the first quarter of 2011.
- Presented workshops to agencies on topics related to ECL Article 57, the Comprehensive Land Use Plan, Commission Councils and Programs, and compliance and enforcement measures. Presented workshops to the Town of Brookhaven Board of Zoning Appeals, Planning Board, and Building Division. Will continue outreach as requested and necessary.
- Maintained the Commission's website with development application information, decisions, and statistics.
- Reviewed applications for hardship waivers, prepared staff reports, SEQRA documentation, and drafted decisions for the following projects under Commission review:



View of Peconic Lake

Compatible Growth Area Applications:

- ⇒ Hamptons Club at Eastport Hardship application. Change of zone and development of 119 duplex condominium units on 76 acres. Project status: Withdrawn (11/17/10).
- ⇒ Willow Wood at Coram Hardship application. Development of 140 condominiums on 25 acres located in Coram, Town of Brookhaven. Project status: Approved (11/17/10).
- ⇒ Artist Lake Plaza Development of Regional Significance. Change of zone and development of commercial uses comprising 379,411 square feet, active recreational ballfields, infrastructure, and open space on 74 acres. Project status: Pending decision.

Core Preservation Area Applications:

- ⇒ American Physical Society Extraordinary Hardship application. Expansion of existing commercial building on 5.0 acres in Ridge, Town of Brookhaven. Project status: Approved (7/21/10).
- ⇒ Gazza Monopole Extraordinary Hardship application. Construction of a 99 foot telecommunications monopole on a 0.34 acre undeveloped parcel located in Eastport, Town of Southampton. Project status: Denied (8/11/10).
- ⇒ Estate of Constance DiPeri Extraordinary Hardship application. Construction of a single-family residential dwelling on a 0.5 acre undeveloped parcel located in Ridge, Town of Brookhaven. Project status: Approved (10/20/10).

Carmans River Watershed Protection Plan

In 2010, the Commission was designated as a member of the Study Group convened by Supervisor Mark Lesko along with members of the NYS Department of Environmental Conservation, the Long Island Pine

Barrens Society, the Nature Conservancy, Long Island Builders Institute, and others to prepare the plan for the Carmans River Watershed. The Executive Director and staff participated in the discussions and development of recommendations by the Study Group on topics including regulatory context, nitrate standards, hydrology, ecology and geology and topography. Staff and the Executive Director participated in weekly meetings over the course of more than three months to assist the Town of Brookhaven with the preparation of the Carmans River Watershed Protection Plan. The Draft Plan is proposed to be completed and submitted to the Brookhaven Town Board in February 2011.

Science and Stewardship Division

During 2009 and 2010, the Science and Stewardship Division continued to support the Commission's mission to protect and restore natural and cultural resources, enhance public access and enjoyment, and promote ecological and other research across the Pine Barrens region. Working closely with Commission representatives, the Division continued to develop and implement exciting new programs, work plans, and special projects. These activities rely heavily on coordinating the efforts of multiple agencies, organizations, and individuals.

All Terrain Vehicle Damage and Dumping Mitigation Program

The Division, working closely with public land managers, continued to develop and manage the Commission's All Terrain Vehicle ("ATV") Damage and Dumping Mitigation program, established to help protect and restore public lands that have been damaged by ATV use, dumping, and other illegal activities. This program complements the work of the Law Enforcement Council and its highly effective ATV Task Force enforcement activities. The Division:



- Organized, led, and participated in planning meetings and field work events to develop and implement strategies to protect roughly 5,700 acres in the Flanders/Hampton Bays area. During field work sessions, the work group identified problem access points, constructed and repaired barriers, hung informational signs, conducted regular monitoring, cleaned dump sites, and removed litter.
- Recruited volunteers and held orientation sessions for them to assist with monitoring and repairing gates and barriers.
- Following up on a Law Enforcement Council helicopter air lift of two abandoned vehicles, the Division removed truckloads of litter from the surrounding Suffolk County nature preserve near the Peconic River in Riverhead.
- Participated in a litter removal event along Whiskey Road in Rocky Point.
- Attended meetings with land managing agency staff to assist with the development of strategies to curb ATV destruction, vandalism, encroachments, and dumping at Carmans River Headwaters Nature Preserve in Middle Island.
- Discovered four abandoned and inaccessible junk vehicles and reported them to the Law Enforcement Council's air lift mission planners.
- Participated in the design of an outreach brochure and letter informing the public about the damage in the Pine Barrens caused by ATVs and other illegal uses, letting citizens know what they can do to help, and explaining how they can enjoy and experience the Pine Barrens. Over 6,000 of these brochures and letters were printed and distributed through targeted mailings, kiosks, and public events.
- Worked closely with the Law Enforcement Council and provided updates at their meetings.
- Assisted the Protected Lands Council in evaluat-



ing the success of the program, developed recommendations for future actions, and prepared a report to the Commission. The Division is anxious to begin habitat restoration projects on the many ATV-devastated acres throughout the Preserve, once the illegal use has been curtailed.



Stewardship in the Upper Carmans River Watershed

Upon the request by the Commission, the Protected Lands Council prepared a report entitled "Stewardship of Public Lands in the Upper Carmans River Watershed: Recommendations". In addition to coordinating and attending office and field meetings, the Division played a significant role in supporting and participating in this important project.

Highlights of the report consisted of recommendations for managing ATV destruction and dumping, creating a unified trail system, protecting and restoring historic resources, and enhancing scenic resources. It was emphasized throughout the report that the promotion of legitimate uses and the enhancement of Pine Barrens natural resources will help to foster a sense of appreciation by the public and their commitment to stewardship across the Pine Barrens region.

The Division also attended meetings of the Carmans River Partnership and helped to organize a visit by the group to the Carmans River Headwaters Nature Preserve. The Partnership would like to see the land owners work cooperatively to curtail destructive illegal uses and restore prime habitat and hiking trails on the site.

Invasive and Nuisance Species Management

- Recruited, trained, coordinated, and led agency staff and volunteers in projects and work events organized by the Division, in cooperation with public land managers.
- Invasive Plant Monitoring - Led a volunteer work event scouting for and mapping invasive plants at Brookhaven State Park.
- Updated the Division's invasive species management section on the Commission's website.
- Reviewed Suffolk County's proposed regulations regarding the sale and use of invasive species.
- LI Invasive Species Management Area - Attended and participated in quarterly meetings of this consortium, which is a formally established New York State Partnership for Regional Invasive Species Management ("PRISM"). Meetings are hosted by the Commission. Division staff also attended statewide monthly PRISM meetings via conference call and internet.



- LI Deer Management - Attended a NYS DEC meeting to discuss management issues.
- Co-organized a training event at the Suffolk County Water Authority's computer lab, where eleven agencies attended and learned how to use "Imapinvasives", the State's centralized invasive species database.
- Reviewed Cornell Cooperative Extension's new recommendations for planting native alternatives in landscapes.
- Conducted site inspections using the Commission's

2006/2007 invasive plant inventory data to identify potential projects. Updated digital map data.

- Coordinated with land managers, organized, supervised, and participated in three multi-party work events at Wertheim Wildlife Refuge.
- Removed mile-a-minute vine in Warbler Woods County Nature Preserve, Yaphank.

Ecological Restoration

- Brookhaven State Park Planting Event - Organized and held a multi-party restoration planting event. Four hundred pitch pine and one hundred bayberry seedlings were planted. Sixteen participants included both agency staff and volunteers.
- NY State's Saratoga Tree Nursery - Initiated communications with the State nursery regarding the production of Pitch pine and other Long Island native plant species for restoration projects in the Pine Barrens.
- Long Island Native Grass Initiative ("LINGI") - The Division assisted with the production of Long Island native genotypic plants to use in future ecological restoration projects and other landscapes. Joining forces with this consortium of public agencies, NGOs, and individuals, the Division:
 - ⇒ Attended regular LINGI meetings, hosted by the Suffolk County Soil & Water Conservation District.
 - ⇒ Collected native grass seed at a US Fish and Wildlife Service grassland in Sayville.
 - ⇒ Harvested native grass seed at the LINGI founder plot in Jamesport.
 - ⇒ Picked Scrub oak acorns in the Dwarf pine plains area in Westhampton.
 - ⇒ Participated in the growing and distribution of Long Island native grasses, forbs, and shrubs at the Suffolk Community College greenhouse.
 - ⇒ Participated in the packaging of one half ton of harvested LI native grasses, to be shipped to a seed company in New Jersey for production.
 - ⇒ Established a small native plant demonstration garden at the Commission's Dwarf Pine Plains Trail in Westhampton using LI genotypic plants grown by the Division.
 - ⇒ Enlisted the help of Cornell Cooperative Extension Master Gardeners to enhance the demonstration garden.



Vegetation Management

- Worked toward developing specifications for early successional habitat restoration and management in rights-of-way during several "think tank" meetings organized by NYS Department of Transportation, Suffolk County Soil and Water Conservation District, and Commission staff. Species selection, seed mixes, seeding rates, establishment, equipment, site preparation, soils, fertilization, and maintenance were discussed. Other attendees included the USDA, Cornell Cooperative Extension, NYS Department of Agriculture and Markets, seed producers, land managers, and other professionals.
- Reviewed roadside vegetation management practices used by other agencies, including the New Jersey Pinelands Commission and NY City Parks Department.
- Organized and attended a field trip with SCWA and NYS DOT to observe pine barrens restoration efforts and techniques at Suffolk County Water Authority facilities.

Public Use and Enjoyment

- Dwarf Pine Plains Trail - Made trail head surface improvements. Repaired registration box. Addressed risk management issues. Picked up trash, removed weeds, collected sign-in sheets, and pruned the trail.

Cultural Resources

Fire Observation Tower Restoration Project - In 2008, the Division conducted a feasibility analysis, whereby seventeen potential sites in the Pine Barrens were evaluated for the restoration of an historic fire tower. After selecting Quogue Wildlife Refuge to be the host site, the Commission, through the Division, commenced more detailed planning.

- Provided support for the drafting of a memorandum of agreement with Quogue Wildlife Refuge.
- Followed up on leads to potential surplus fire observation towers across the Country.
- Communicated with the Federal Aviation Administration regarding the proposed tower height.
- Conducted a bucket lift test to observe the potential view shed from the tower.
- Communicated with Town of Southampton staff regarding site plan regulations applicable to the project.
- Communicated with staff from Gabreski Airport regarding construction and emergency access.
- Gave a presentation and led a field tour of the tower site to the Protected Lands Council.



Research

- Held the 14th and 15th Annual Pine Barrens Research Forums. The theme of the event in 2009 was "*Laying a Foundation for Policy Through Research*" and in 2010 was "*The Pine Barrens Maritime Reserve: Beyond the Trees*".
 - ⇒ Organized and attended planning committee meetings with co-sponsors.
 - ⇒ Recruited speakers, poster presenters, and exhibitors.
 - ⇒ Organized field trips.
 - ⇒ Prepared the agenda, conference brochures, program handouts, and registration materials.
 - ⇒ Produced event proceedings.
- Ecological Communities Maps - Reviewed and compiled historic Pine Barrens ecological community mapping efforts. Began preparing a report with results.
- Pine Barrens Ecological Monitoring Program - Following up on the Commission's development of forest health and freshwater wetlands monitoring protocols in 2007/2008, the Division met with Commission representatives to discuss the establishment of a long term monitoring program. Such monitoring would provide a foundation for future ecological management initiatives by the Division.
- Forest Health Aerial Monitoring - Collaborated with the NY State Department of Environmental Conservation ("DEC") and the Civil Air Patrol to conduct an aerial remote sensing mission to monitor for forest pests and pathogens.
- Oak Mortality in the Pine Barrens - scouted for and researched causal agents.

- Gave presentations to the Commission and Wildfire Task Force. Topics addressed were safety concerns associated with dead trees and limbs, benefits of dead trees in natural ecological processes, monitoring, management issues, public education, protection of habitat and ecological integrity, forest regeneration, ATV and dumping access, and recreational resource protection.
- Fielded inquiries from the public.
- Communicated with the USDA Forest Service and NYS DEC's Forest Health Unit.
- Discussed roadside hazard mitigation methods with the NYS Department of Transportation.

Volunteer Program Development

- Began to build the capacity to recruit and manage volunteers to assist with Commission stewardship projects.
- Gave a presentation at a Cornell Cooperative Extension Master Gardeners meeting. The gardeners expressed interest in assisting with Division restoration projects.
- Conducted volunteer training during various stewardship work events.
- Established a working relationship with the Long Island Volunteer Center, a resource for recruiting volunteers.
- Addressed risk management issues and incorporated new language into a volunteer sign-in/sign-out sheet for field work events.
- Developed a database of potential volunteers.
- American Red Cross ("ARC") Community Service Program - Coordinated the execution of a Memorandum of Agreement that will enable the Commission to receive assistance from the ARC for stewardship work.
- Communicated with a Girl Scout troop regarding stewardship opportunities.
- Attended a seminar "Developing Volunteer Resources" hosted by the NYS Emergency Management Office.
- Met with a Board of Cooperative Educational Services representative about student participation in Pine Barrens stewardship projects.



Stewardship Agreements

- Worked with partners to establish memorandums of agreements, memorandums of understanding, and authorizations that enable the Commission to conduct certain stewardship work on lands owned by others. Compiled a notebook for the Commission library containing all such documents executed to date.



Protected Lands Council

- Provided logistical and administrative support for meetings and activities.
- Participated in regular meetings and work sessions.
- Co-produced two reports containing recommendations to the Commission.
- Assisted in efforts by the Commission to reorganize the Council.

Equipment, Tools, and Supplies

- Purchased, managed, and maintained equipment, tools, and supplies for "on-the-ground" projects.
- Constructed improvements to the Commission's equipment storage shed by installing shelving and a work bench.

Geographic Information Systems

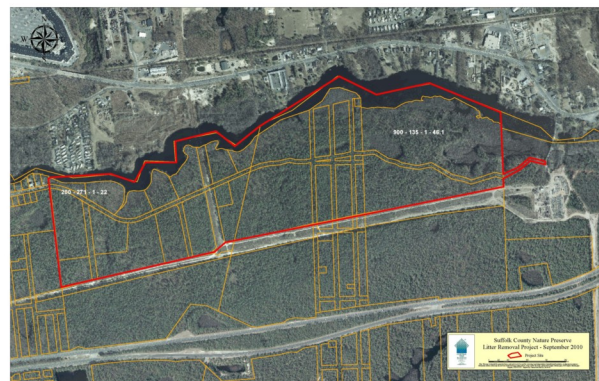
- Prepared maps for stewardship projects, including a map of the upper Carmans River public lands and potential trail corridors.
- Provided GIS technical assistance to staff.
- Began compiling digital spatial data sets related to past ecological community and vegetation inventory work in the Pine Barrens.
- Managed license agreements for software and data use.
- Prepared a map of Pine Barrens Credit Program conservation easement protected lands.

Compliance and Enforcement

- Assisted Compliance and Enforcement staff with several incidents.

Land Use

- Provided input on a number of development and land use projects.
- Reviewed a proposal by New York State DOT to selectively remove dead and defective trees along state highways in Flanders.
- Provided input regarding the restoration of pine barrens habitat by the Long Island Power Authority.
- Conducted inspections of proposed tree removals at several sites.



Inquiries

- Fielded inquiries from the general public, students, professors, organizations, and agencies.

The Division looks forward to another productive year serving the Pine Barrens Commission and the public in 2011.

Compliance and Enforcement Division

The four Major Areas of duties and responsibilities for the Compliance and Enforcement (CAE) Division through the CAE Coordinator are:

- Land Use and Natural Resource Incident Investigation and Permit Compliance Inspections
- Conservation Easement Monitoring
- Commission Council (LEC, WTF, PLC) Support
- Health and Safety Training

Land Use and Natural Resource Incident Investigation and Permit Compliance Inspections

The CAE Coordinator conducts compliance inspections of Commission-approved permits for land use activities and development projects under the Commission's jurisdiction to ensure that development does not exceed the scope of the permit conditions, and does so in a timely fashion as projects are implemented. Compliance inspections are performed both before and after Commission permits are issued in order to assure full compliance with permit conditions.

A monthly report is prepared which compiles and analyzes incoming calls to the Pine Barrens Commission office on potential violations that occur in the Central Pine Barrens. For each call an incident report is completed that is given a Central Complaint number. A tracking system has been established for following up with the agency that has been assigned to investigate the incident. Every report now has a tracking status assigned to it that indicates whether it is "open or closed." A compilation of these incidents are provided in the tables presented in Attachment #1 and #2.

Training is given to all Commission personnel, with particular emphasis upon administrative and land use personnel, on how to complete an incident report to capture consistent and reliable information since these staff members are typically the first points of contact for incoming callers concerning incidents.

Land use incident investigation is a cooperative effort in conjunction with other agencies having jurisdiction and includes the reporting of any findings and appropriate follow up work. In the case of verified violations of land use and natural resource laws, notices of violation may be issued as directed by the Commission.

Conservation Easement Monitoring

It is also the responsibility of the CAE Coordinator to conduct regular compliance inspections and prepare field reports for conservation easement parcels held by the Commission, in conjunction with the individual landowners, recognizing the individual conditions of each easement.



BSA Camp Wauwepex—Wading River

Commission Council Support (LEC, WTF, PLC)

This Division coordinates on certain activities with the Law Enforcement and Protected Lands Councils (LEC and PLC), the Wildfire Task Force (WTF), and other public and private entities. In addition to these primary responsibility areas, the Commission's CAE Division is also responsible for:

- Regular outreach efforts to state, county, and town land use enforcement agencies.
- Coordination with emergency management and response agencies as appropriate.
- Investigative support to the New York State Attorney General's Office, the Suffolk County District Attorney's Office, and other agencies on land use Plan violation referrals.
- Coordination of CAE work with the Commission's Land Use and Planning Division and the Pine Barrens Credit Program
- Working with the Land Use Division staff to inform contractor and development trade organizations about the goals and objectives of the Act and the Plan, for the purpose of assuring compliance in advance and thereby preclude future violations.

Health and Safety Training

The CAE coordinates appropriate health and safety training for the staff and volunteers that has included CPR and first aid training and understanding and preparations for environmental exposures such as heat and insects.

Summary of 2009/2010 CAE Work

At the end of this section are two summary reports in tabular form that relate to the four areas of CAE responsibilities. The first report provides tables that include information on the number of parcels that were reviewed from the beginning of 2007 through the end of 2009 for conservation easement monitoring, incident reporting and compliance site visits as well as and incident statistics. The second report reflects the same information and data for the period beginning January 1, 2010 through December 31, 2010.

Land Use and Natural Resource Incident Investigation, Reporting

In comparing the 2009 and 2010 incidents reported to the Pine Barrens Commission, there were various impacts to the natural environment due to dirt bikes, ATVs, hunting and trespass violators. There was also an increase in reported dumping complaints. The CAE Coordinator continues to work closely with the Town of Brookhaven, Riverhead and Southampton to investigate these dumping incidents to ensure timely clean up. The Law Enforcement Council has put together a task force to step up patrols of these areas and has been successful in numerous enforcement actions as discussed in the Law Enforcement Council section of this biannual report.

Conservation Easement Monitoring

There are currently 737 parcels protected by the Central Pine Barrens Credit Program. By the end of 2010, 725 site visits were completed and a filing system with pertinent information on each parcel was established. In 2011, the CAE Coordinator plans on completing the remaining 12 parcels in the Credit Program plus any additional parcels that are new to the Program. The individual tax map parcel is in-

spected in the field for compliance with the conditions of its easement, any encroachments or other issues such as dumping or ATV use. For large undeveloped areas that contain many undersized parcels where the specific boundaries are not readily discernible, the general area containing the parcels is inspected for its overall environmental integrity, which includes whether the area is relatively intact with no clearing, access issues or illegal activity apparent (i.e.: by tax map section instead of visiting specific tax map parcel number).

Interagency Communication and Support

In the past three and a half years, since the establishment of the CAE Division, there have been several accomplishments. The CAE staff continues to meet with State, County and Town representatives who have jurisdiction in the Central Pine Barrens. These meetings serve to publicize and answer questions regarding the Compliance and Enforcement Division of the Commission and foster open communication and cooperation among all land use and natural resource enforcement offices.

In 2011, the Commission staff plans to continue these informational meetings with the Town of Brookhaven, Southampton and Riverhead. The CAE staff will continue to work with and support the Law Enforcement Council, the Protected Lands Council and the Wildfire Task Force.

Health and Safety Training

In September 2009, the CAE Coordinator completed and received a Certificate for the Professional Development Series (PDS) Course "Emergency Planning" from the New York State Emergency Management Office. In 2011, the CAE Coordinator will continue to take courses and attend the SEMO Regional meeting as a representative of the Commission. In 2009 and 2010 the Commission staff received training on the following health and safety areas:

1. Emergency situations
2. First Aid
3. Safe use of tools and equipment
4. Reporting an incident and completing an incident report
5. Cardio-Pulmonary Resuscitation (CPR)
6. Automated External Defibrillation (AED)

In 2011 the CAE Coordinator will continue to coordinate with Suffolk County Parks to enable Commission staff to continue to receive health and safety training.

Incident Command System

In 2009 and 2010 a new policy and procedure was established for the Central Pine Barrens Commission events that involves the preparation and use of an Incident Action Plan and the Incident Command System. This Plan is used by the New York State SEMO, County and Town for emergency response situations. An Incident Action Plan is a written document that organizes all of the event's details, equipment and personnel necessary to carry out an event and assigns responsibility for specific event-related tasks in a very structured, organized manner. It includes a reporting hierarchy that is represented by a chain of command reporting system for staff and personnel to follow based on their assigned area of responsibility for the event. This system has been successfully used in 2009 and 2010 to organize and carry out the Annual Research Forum and Discovery Day events.

Attachment 1

DEVELOPMENT PROJECT COMPLIANCE SITE VISITS
Reporting Period: 8/21/07 - 12/31/09

Central Pine Barrens	Brookhaven (District 200)	Riverhead (District 600)	Southampton (District 900)
Core Preservation Area	13	1	4
Compatible Growth Area	26	1	1

CONSERVATION EASEMENT MONITORING SITE VISITS
Reporting Period: 8/21/07 - 12/31/09

Core Preservation Area	Brookhaven (District 200)	Riverhead (District 600)	Southampton (District 900)	Totals
Total	44	7	52	103
Done	38	6	48	92
Pending	6	1	4	11

Tax Map Parcels

Total	343	24	370	737
Done	315	22	315	652
Pending	14	2	46	62

Attachment 1 (continued)

Compliance and Enforcement Incident Reports

Reporting Period: All from 1/1/09 -12/31/09

and Open (i.e., Pending) from 2008

Year	Brookhaven (District 200)		Riverhead (District 600)		Southampton (District 900)		Other		Totals	
	2009 All	2008 Open	2009 All	2008 Open	2009 All	2008 Open	2009 All	2008 Open	2009 All	2008 Open
Core	28	3	1	2	11	3			40	8
CGA	12	2		0	3	1			15	3
Non PB	3	0	0	0	0	0	1	0	4	0
Totals	43	5	1	2	14	4	1	0	59	11

Attachment 2

DEVELOPMENT PROJECT COMPLIANCE SITE VISITS			
Reporting Period: 8/21/07 -12/31/10			
Central Pine Barrens	Brookhaven (District 200)	Riverhead (District 600)	Southampton (District 900)
Core Preservation Area	7	5	3
Compatible Growth Area	10	-	1

CONSERVATION EASEMENT MONITORING SITE VISITS				
Reporting Period: 1/1/10—12/31/10				
Core Preservation Area	Brookhaven (District 200)	Riverhead (District 600)	Southampton (District 900)	Totals
Tax Map Sections				
Total	6	1	4	11
Done	6	0	3	9
Pending	0	1	1	2
Tax Map Parcels				
Total	4	2	46	62
Done	4	0	18	32
Pending	0	2	28	30

Attachment 2 (continued)

COMPLIANCE AND ENFORCEMENT INCIDENT REPORTS										
Reporting Period: All from 1/1/10 -12/31/10 and Open (i.e., Pending) from 2009										
	Brookhaven (District 200)		Riverhead (District 600)		Southampton (District 900)		Other		Totals	
Year	2010 All	2009 Open	2010 All	2009 Open	2010 All	2009 Open	2010 All	2009 Open	2010 All	2009 Open
Core	18	2	5	1	6	0			29	3
CGA	9	3	0	0	1	2			10	5
Non-PB	0	0	0	0	0	0	3	1	3	0
Totals	27	5	5	1	7	2	3	1	42	8

Pine Barrens Law Enforcement Council

Sgt. Arthur Pendzick, Suffolk County Park Police, Chair

Lt. Dallas Bengel, NYS EnCon Police, Vice Chair



Back in 1993, the newly appointed Executive Director of the Pine Barrens Commission, Ray Corwin, brought together representatives from various law enforcement agencies who had jurisdiction within the Central Pine Barrens to share information and identify ways to better protect and safeguard the Central Pine Barrens. This information was incorporated into the Commission's Comprehensive Land Use Plan that was being drafted at the time. The initial meeting of this group was such a success, that other meetings followed and the Pine Barrens Law Enforcement Council (PBLEC) was created.

For the past 17 years the Pine Barrens Law Enforcement Council (PBLEC) has held ten meetings each year, with its 26 member agencies working both together and independently within their various jurisdictions, protecting and safeguarding the Central Pine Barrens.

Unfortunately, the Council suffered a devastating loss in 2010 with the untimely passing of Ray Corwin who has been the Council's longest active, participating member. Ray was a devoted, dedicated, hard worker and a very important part of the PBLEC, not to mention a good friend to many of the Council members. He will be greatly missed, but not forgotten. To honor Ray's memory, the PBLEC has permanently installed a bronze plaque dedicated with his name in the Conference room at the Southaven Park Lodge, where the Council holds its regular meetings.

The Environmental Benefit Fund and Shared Equipment

In 2009, the PBLEC drafted guidelines on how to administer the EBF, including making recommendations to the Commission and managing expenditures. With this now in place, it is assured that monies from the EBF will be available at least until 2014. Of course, the LEC is still exploring ways of getting additional grants and monies to add to the EBF. Currently, there is still more than \$70,000 left in the fund.

Purchases made from the Fund in 2009 included:

- 20 all terrain vehicle (ATV) helmets distributed to the various enforcement agencies
- A 60 x 120 single axle enclosed trailer, assigned to the DEC EnCon Police.
- A replacement ATV rim and 3 ATV tires for Pine Barrens quads
- New and updated surveillance equipment managed by DEC EnCon Police.

All equipment purchased through the Fund is available for use by any PBLEC member agency when needed.

In addition, on August 10th, PBLEC representatives met with Brookhaven Town Councilwoman Jane Bonner and Deputy Commissioner Peter O'Leary to discuss the possibility of the Town donating ATVs to the PBLEC, as it has done for the County Police in the past. Councilwoman Bonner sponsored a Town Board resolution regarding donating ATVs seized by the Town to the PBLEC. On September 29, the Brookhaven Town Board passed the resolution to donate two ATVs (quads) to the Pine Barrens Commission, which have now been turned over to the NYS DEC EnCon Police and the Forest Rangers for enforcement use.

within the Central Pine Barrens.

The PBLEC was very frugal with its purchases from the EBF in 2010, spending only \$ 268.50 on batteries for 15 of its older radios which were acquired several years back. Approximately, \$76,000.00 still remains in the fund for future use.

In 2010, once again, the PBLEC petitioned the Town of Brookhaven for another ATV donation, and was provided with an unclaimed 2007 Suzuki Quad. This quad was turned over to the Southampton Town Police Community Response Unit and is being used for enforcement purposes within the Central Pine Barrens.

Legislation

During 2009, the PBLEC has discussed ways to strengthen the current ATV laws to better aid the officer in the field and to act as a more effective deterrent to illegal ATV use.

On April 6th, PBLEC representatives met with staff from the Suffolk County Legislature's Presiding Officer and General Counsel Offices to explore the feasibility of their proposal to modify the current ATV law. The PBLEC temporarily tabled working on this initiative in 2010 due to the untimely passing of Ray Corwin who was a key participant in this process and they anticipate reactivating their work on this legislative change in 2011.

Training, Mitigation, and Vehicle Removals

After sending two of their Deputies to become certified ATV training instructors, the Suffolk County Sheriff's Office set up a training facility at Gabreski Airport. Several enforcement agencies participated in ATV training at the Gabreski Airport facility during 2009 and 2010.

The PBLEC continues to be actively involved with the Wildfire Task Force and the Protected Lands Council (PLC) of the Commission in 2009 and 2010. The PBLEC has been particularly active with the ATV and Dumping Damage Mitigation Project of the PLC and in 2010 participated in work sessions for a plan to protect the headwaters of the Carmans River.

On October 6th, 2009 for the first time since 2002, the NY Army National Guard Aviation Support Facility at Islip MacArthur Airport (a member of the PBLEC) in cooperation with the other PBLEC agencies, airlifted abandoned vehicles out of the Pine Barrens. Six vehicles in remote areas were removed by helicopter: four in Manorville, one in Westhampton and one in Ridge.

On June 17, 2010, the PBLEC, working in cooperation with the NY Army National Guard, conducted another abandoned vehicle airlift that removed 5 more vehicles out of the Pine Barrens. A total of 74 vehicles have now been removed since this project was started. This was the 18th mission accomplished since 1996.

The PBLEC also participated with the Wildfire Task Force and New York Army National Guard on April 28, 2010 in a water bucket training exercise held at the Sarnoff preserve and Wildwood Lake. This



training exercise helps prepare the Army National Guard and local fire service related agencies to fight future wildfires in the Pine Barrens and hopefully will become an annual event. These exercises manifest the cooperation and effectiveness of military, law enforcement and civilian agencies working together.

A Memorandum of Understanding (MOU) was finalized and signed in 2009 between the Commission and the U.S. Air Force Auxiliary Civil Air Patrol's (CAP) Long Island Wing. This MOU enables PBLEC member agencies to utilize the CAP and their aircraft and personnel resources for observation and support missions.

The PBLEC also supported a U.S. Air Force evaluation of the local CAP Wing on June 13, 2009 and a field training exercise on December 12, 2009. A written report was submitted to the Commission and the PBLEC by the CAP.

Early in 2009, representatives from the PBLEC continued their involvement with the Suffolk County Department of Social Services and other agencies on a committee to end homelessness in Suffolk County by formulating a 10 year plan. Final details of this plan are still being worked on.

PBLEC representatives also met with Suffolk County Board of Cooperative Educational Services (BOCES) staff in 2009 to discuss areas in which they may possibly work together for the mutual benefit of their students and the Pine Barrens.

In 2010, the PBLEC had more civilian involvement with various trail groups, other organizations and individuals regularly attending and participating at our monthly meetings.

Central Pine Barrens Advisory Committee

The Pine Barrens Advisory Committee (created in the pine barrens law with the Commission itself) was charged by the Pine Barrens Commission with researching and exploring ways to enhance or change (if necessary) the purposes, goals and operations of the various councils and committees of the Commission, including the PBLEC.

On June 24 and July 29, 2009, PBLEC representatives provided information to, and answered questions from, the Advisory Committee explaining their purpose, operations and goals. Overall, the Committee acknowledged and supported the PBLEC's work, recommending several specific initiatives to assist them in pursuing their enforcement goals.

Special Topics and Speakers

In 2009, the PBLEC had several interesting and informative speakers at their monthly meetings:

March 26th - Claire Kessler (Lieutenant, NYPD Retired) and Robert Schindlar (PO, Nassau County PD Retired) gave an overview of the Suffolk County BOCES Law Enforcement Orientation for high school students.

March 26th - Ann Carter spoke on the progress and work being done on the PLC's ATV and Dumping Damage Mitigation Project.

July 27th - Rick VanLandingham (Resident agent in charge of the Coast Guard Investigative Service) gave a presentation of his responsibilities and was welcomed to the Council.

September 24th - EnCon Officer Joshua VerHague gave a presentation on fishing and hunting regulations, and the upcoming hunting season.

In 2010 the following were guest speakers who gave informative presentations at the PBLEC monthly meetings;

May 20th - Commission staff member, Ann Carter spoke on the progress and work being done on the PLC's ATV Mitigation Project.

September 23rd - NYS DEC Officer Dustin Oliver gave a presentation on the upcoming hunting season.

Multi Agency ATV Task Force and Enforcement

For the third year in a row, illegal ATV activity has lessened in 2009, but remains a major concern and problem for the PBLEC agencies.

After a hiatus of details from June through December 2008, the PBLEC agencies were able to resume the Multi Agency ATV Task Force details once again on a regular basis in 2009. The Task Force details have been responsible for the majority of illegal ATVs being caught and impounded and the issuance of summonses to their riders in the Central Pine Barrens vicinity.

In the first half of 2009, 11 details were performed, impounding just 15 illegal ATVs. ATV activity was very sparse during this period, sometimes almost nonexistent. In the second part of the year they were able to do only 5 details, but ATV activity once again seemed to blossom and 45 illegal ATVs were impounded during this time. Overall, 60 illegal ATVs were impounded and 150 ATV-related summonses were issued in 2009.



In the seven years during which Sgt. Pendzick has headed these details, they have been responsible for impounding 942 illegal ATVs and issuing 2,271 ATV related summonses.

A complete summary of the details is available in the separate 2009 Pine Barrens Law Enforcement Council Multi Agency ATV Task Force Annual Report.

During 2009, enforcement agencies on the PBLEC working within and around the Central Pine Barrens region have collectively compiled the following enforcement statistics:

- 109 ATV complaints handled
- 95 ATV impounds (60 on Task Force details)
- 188 ATV related summonses (150 on Task Force details)
- 7 ATVs reported stolen
- 2 stolen ATVs recovered
- 1 reported ATV injury
- 68 trespass arrests/summonses issued (many were ATV related)
- 184 reported dumpings
- 62 dumping arrests/summonses issued
- 205 Environmental Conservation Law summonses issued
- 4 stolen vehicles recovered
- 2 homeless person incidents
- 220 miscellaneous Penal Law misdemeanors handled
- 100 miscellaneous Penal Law felonies handled

The above figures reflect the collective work of the following agencies (these figures are actually much greater as many of the agencies had not submitted their results by the time of this printing):

- Brookhaven Town Public Safety
- NYS Environmental Conservation Police
- Riverhead Town Police
- Southampton Town Public Safety
- Suffolk County Deputy Sheriffs
- Suffolk County Park Police
- Village of Quogue Police



In 2010, there were ten Multi-Agency ATV Task Force details. Various PBLEC member agencies contributed their manpower and resources to go out into the field to combat illegal ATV activity and any other criminal offenses that they may encounter in the Pine Barrens. Illegal ATV activity continues to be greatly decreased from prior years as a direct result of these details and is one of the major accomplishments of the PBLEC.

The 2010 Task Force detail produced the following results:

- 37 ATVs were impounded - (20 Quads, 16 dirt bikes and 1 Enduro)
- 82 ATV related summonses were issued
- 7 - SC Code 469.3a (operate ATV on public lands)
- 30 - SC Code 469.3b (operate ATV on private lands w/o written consent)
- 21 - V & T 2282.1 (operate unregistered ATV)
- 21 - V & T 2407.4 (operate uninsured ATV)
- 2 - V & T 2403.1 (operate ATV on public highway)
- 1 - V & T 2406.2 (operate ATV not wearing a helmet)

As of 2010, the details have produced a total of 979 illegal ATV impounds and issued a total of 2,353 ATV related summonses in the past 8 years. The Task Force's 1,000th ATV impound could become a reality in 2011.

The 2010 details also produced the following non-ATV results:

- 1 arrest for an illegal handgun on State lands
- 1 dumping arrest on Brookhaven Town property
- 3 arrests for possession of marijuana on State lands
- 2 arrests for illegal 4 x 4s on County parklands

Plus several other V & T summonses were issued for various offenses including a misdemeanor revoked license. A downside to these details was that 3 accidents occurred involving officers riding quads and all resulted in injuries. In one instance, a suspect deliberately rammed his quad head on into another quad being operated by a Deputy Sheriff in order to avoid apprehension, and then fled on foot. An investigation is still open, the suspect is actively being sought and it shows the risk that these Officers take when they go out on details.

Special recognition goes to the Officers of the following Agencies who participated on the 2010 details:

Brookhaven Town Public Safety and Park Rangers
NYS Environmental Conservation Police (DEC)
NYS Forest Rangers
NYS Park Police
Suffolk County Deputy Sheriffs
Suffolk County Park Police

This is a partial listing of enforcement statistics collectively compiled by the following agencies for 2010:

Brookhaven Town Public Safety and Park Rangers
NYS Environmental Conservation Police
NYS Forest Rangers
Quogue Village Police
Riverhead Town Police
Suffolk County Deputy Sheriffs
Suffolk County Park Police

2010 Statistics:

144 - ATV complaints handled
151 - ATV impounds
126 - ATV related summonses issued
 2 - Recovered stolen ATVs
 4 - Reported ATV injuries
46 - Trespass arrests/summonses
 2 - Arson/fire incidents
67 - Dumping complaints
75 - Dumping arrests/summonses
168 - Environmental Conservation Law violations
 2 - Stolen vehicles recovered
 2 - Illegal woodcutting
 7 - Homeless person incidents
 6 - Penal Law (misdemeanor)
 1 - Penal Law (felony)

2009 Annual Pine Barrens Environmental Enforcement Officer of the Year Awards

The 4th Annual Environmental Enforcement Officer of the Year Awards were presented on January 8, 2010 at the Annual Pine Barrens Cooperators Meeting to:

NYS Park Police Officer Steven Czawursky
NYS Environmental Conservation Officer Timothy Fay
Southampton Town Police Officer Richard Gates
Suffolk County Deputy Sheriff Greg Negra
Suffolk County Park Police Officer Michael Malone

A special award from the PBLEC went to Southampton Town Police Sergeant William Sommer for his Continuous Significant Environmental Enforcement Activity.

2010 Annual Pine Barrens Environmental Enforcement Officer of the Year Awards

The 5th Annual Environmental Enforcement Officer of the Year Awards were presented on January 14, 2011 at the Annual Pine Barrens Cooperators Meeting to:

Brookhaven Town Park Ranger Kevin Klokkel
NYS Environmental Conservation Officer Christopher Lagree
Suffolk County Deputy Sheriff Robert Reeve
Suffolk County Park Police Officer Thomas Smith

A special award from the PBLEC went to NYS Forest Ranger Captain Timothy Byrnes.

In Closing

The years 2009 and 2010 were successful for the PBLEC and their work to protect and safeguard the natural resources in the Central Pine Barrens, thanks to the cooperation, dedication and work of the many PBLEC agencies. Through these efforts much has been accomplished and working together we hope to maintain these results and accomplish even more in the coming years. Special thanks go to all those agencies and people responsible for this continued success.

The continued support of Commission Chairman Peter A. Scully and all of the Pine Barrens Commissioners, Designated Representatives and Commission staff (especially Ray Corwin, Larry Hynes and Robin Mills) has been instrumental and is greatly appreciated in helping make the Pine Barrens Law Enforcement Council a working reality.



Wildfire Task Force

John Urevich, Chair

Capt. Timothy Byrnes and Ed Schneyer, Co Vice Chairs

The Wildfire Task Force is one of the Commission's larger Councils with 44 members from public and private agencies and local fire departments. The WTF was created after the 1995 wildfires to bring all fire service-related entities together to provide for pre-wildfire suppression planning and response in the Central Pine Barrens that also addressed wildfire prevention planning provisions called for by the Pine Barrens Act. The Task Force accomplished this goal through the preparation of a Central Pine Barrens Fire Management Plan in 1999 that led to the creation of 8 subcommittees to carry out this Plan.

In 2009 and 2010, the WTF focused on their own self evaluation in terms of the effectiveness and function of its 8 subcommittees and general operational structure in response to the Advisory Committee's recommendations that were made to the Commission as part of their evaluation of Commission Committees during 2009.

- ⇒ The WTF provided their own recommendations to the Commission in 2010 that included:
 - ⇒ their desire to retain their current operational structure of Chair and two vice chairs, their relationship with the Academy Board and quorum requirements,
 - ⇒ agreement with most of the AC's recommendations to eliminate certain subcommittees that were no longer necessary.
 - ⇒ recommendations on staffing and resource needs to assist with crucial fire data collection to identify trends with fire occurrence and a central repository for this information, firewise public education and outreach, and to carry out an effective prescribed fire program in the Central Pine Barrens.
 - ⇒ a commitment to focus in 2011 on reinvigorating the participation of local fire departments on the WTF that has diminished overtime.

A key topic of concern during 2010 for the WTF and local fire departments was the oak tree mortality occurring in the Central Pine Barrens and elsewhere that was affecting over 14,000 acres, and the potential impacts this could have on firefighter safety and vehicles entering the woods to fight wildfires. The WTF had Ms. Carter from the Commission's Science and Stewardship Division speak on this situation at their meeting in October where she discussed the possible causes of the oak tree mortality and her work with NYS DEC Lands and Forests, Forest Health Unit and the Civil Air Patrol to monitor forest health and oak tree mortality through aerial flyovers.

Training

- ⇒ A helicopter water bucket training exercise for wildfire fire fighting was conducted on April 28, 2010 in cooperation with the NY Army National Guard, the WTF and the Law Enforcement Council at the David A. Sarnoff Preserve and Wildwood Lake. This has been an ongoing cooperative training program for several years with the NY Army National Guard and the Wildfire Task Force. It provides the Army Guard with necessary training opportunities for their crews and it is used to familiarize local

fire service agencies with the protocol required to request a helicopter with a water bucket during wildfire situations. Fire service representatives in attendance are given the opportunity to actually call in by radio a helicopter to drop water on a targeted spot similar to a live fire situation to familiarize them with terminology used and skills required to synchronize the helicopter's release of water to hit the target. The WTF gratefully acknowledges and appreciates the NY Army Guard and their participation in these training exercises.



Eastport Fire Weather Station

Wildfire Awareness and Notification

The Commission continues to operate a fire weather station located in Eastport at a SCWA wellfield located on County Route 51 in Eastport. Data from this weather station is used to determine the daily fire danger rating for the Central Pine Barrens which translates weather and vegetation conditions (fuels) into how difficult a wildfire would be to control if there was a fire start. This data is sent daily from Commission staff to Suffolk County Fire Rescue and Emergency Services (SCFRES) who in turn dispatch this information to the local fire service community. The local fire service community uses this information for pre-planning fire suppression resources during drought or dry conditions when vegetation can more readily ignite and spread into a large wildfire. This information is also placed on four Smokey Bear fire danger signs located near the Sears Bellows County Park entrance, Suffolk County Pine Trail Center, Southaven County Park, and CR 46 near Brookhaven National Laboratory, to inform the public.

The fire danger rating reports are based largely on the statistical evaluation of historic fire weather data and its relationship to historic fire occurrence data that is compared to the daily fire weather data readings, the current National Weather Service fire weather forecast, the number of days since the last significant rain event and current live fuel (vegetation) conditions, among other factors. Grass conditions are monitored in the Spring since this is when a significant number of fire starts can occur. In May, the potential for brush fires diminish as the trees, brush and other vegetation green up or leaf out. During the summer, brush conditions are monitored and fire danger reports are issued based on this fuel type.

- The initial fire weather reports in 2009 began with several moderate fire danger days with a period of high and very high fire danger ratings, based on grass fuel conditions, occurring toward the end of April. During July, in regard to brush type fuels, there were a few days of moderate fire danger ratings leading into August. In August there were approximately two weeks of moderate fire danger with one day of high fire danger rating occurring on August 28th.
- During 2010 there was a two week period of high fire danger rating observed for brush type fuels which began during the last week of June and extended into the second week of July. This signaled dry vegetative conditions and increased potential wildfire concerns should an ignition occur and this was repeated during the last week of August. During these high fire danger periods, local fire service and land managers may, based on this fire danger information, decide to increase patrols in certain areas, pre-stage equipment or even close or limit access to public land.

In 2009, a tilting mast was added to the fire weather station to enable easier access to change out the station's sensors for calibration.

Goals for 2011

- Review whether there is a need for additional fire danger signs, and identify possible locations such as near Cathedral Pines County Park.
- · Follow up on recommendations made to the Commission regarding staffing and resource needs, especially for prescribed fire and data collection.
- · Will work on identifying ways to reinvigorate the participation of local fire departments in the WTF.
- · Will continue to work with the NY Army National Guard to offer wildfire training sessions on an annual basis based on their availability.

Pine Barrens Credit Clearinghouse Report

James T.B. Tripp, Chair, Andrew Freleng, Vice Chair

The Long Island Pine Barrens Act specified the need for land use protection mechanisms to protect the Core Preservation Area that included the purchase of development rights that later came to fruition when the 1995 *Central Pine Barrens Comprehensive Land Use Plan* (the "*Plan*") was completed and the Pine Barrens Credit Program, a transfer of development rights program, was created. Chapter 6 of the *Plan* outlines the overall Credit Program that defines sending and receiving areas, specifies operating procedures and tracking requirements, and includes Credit allocation formulas. The *Plan* specified a five member Clearinghouse Board of Advisors to oversee the operation and implementation of the Credit Program and is comprised of representatives for the State of New York, the County of Suffolk, and the Towns of Brookhaven, Riverhead and Southampton who are appointed by these entities and serve without compensation.

Owners and purchasers of Pine Barrens Credits (Credits) transact business in an open market, with all Credits and transactions tracked by the Clearinghouse from "cradle to grave". The Clearinghouse can choose to actively assist the market by offering to purchase Credits as it has done in prior years. Information on prior Clearinghouse initiatives to purchase Credits is available on the Commission's website at:

http://www.pb.state.ny.us/chart_pbc_main_page.htm#Current_and_prior_initiatives)

The Clearinghouse also publishes a monthly *Registry* which lists potential buyers and sellers of Credits that is available on the Commission's website at: (http://www.pb.state.ny.us/chart_pbc_main_page.htm#Registry)

Except where noted, all statistics in this report represent the totals from the three participating Towns, Brookhaven, Riverhead and Southampton. Overall program statistics that include Town level breakdowns and information for 2009 and 2010 are presented in the Program Summary table at the end of this report.

Parcels Protected by the Program

As of 1/1/11, there are 773 parcels enrolled in the Program which are protected by conservation easements that prevent them from being developed. The owner still retains ownership of the parcel that has been stripped of its development potential and can enjoy the passive use of the parcel as long as it is not considered development as defined by the Long Island Pine Barrens Act. The Credits allocated to a parcel are based on an allocation formula in the Plan that uses the acreage and zoning of the parcel as of 1995. The owner can either use the Credits (this process is referred to as "the redemption of Credits" in the Credit Program) to develop land outside of the Core Preservation Area at a level greater than what is allowed by Town Code (i.e., more housing units or square footage) or by the Suffolk County Department of Health Services (i.e., increase sanitary waste flow allowed). The owner may also choose to sell or convey the Credits to a developer, or other individual or entity to do the same.

Approximately 1,891 acres have been preserved through the Credit Program with an average parcel size of 2.4 acres. From the larger Pine Barrens preservation perspective, these easement protected lands comprise approximately 3.42% of the statutorily defined 55,000 acre Core Preservation Area.

Credits Issued, Conveyed, and Redeemed

Since the start of the Program in 1995 (the first Credits were actually issued in 1996), 918.8 Credits have been issued (24.53 Credits in 2009-2010). Of these, 372.80 have been redeemed (41% of the issued Credits), while the remaining 546 Credits are still available for use or sale. The Pine Barrens Credit Clearinghouse did not own any Credits during 2009 and 2010.

During 2009-2010, 36.94 Credits were redeemed. The overall level of Credits available among the three Towns (i.e., Credits not redeemed) decreased by 10.13 Credits during 2009 and by 2.28 Credits during 2010. This information is reflected in the Program Summary table at the end of this report.

Credit Sales

During 2009-2010, 73.02 Credits (includes 34 Credits purchased by the Town of Southampton from WJF in 2010) were sold. The average "per Credit" sales price was \$62,310.77 which included the Town of Southampton purchase of 34 Credits at \$50,000 per Credit, however, the average sales price involving only private parties was \$75,579.14 (with the range from \$40,909.9 to \$99,000 "per Credit"). This reflects a decrease of \$6,244 from the overall 2008 average unit Credit price.

Since the Credit Program's inception through January 1, 2011, a grand total of \$31.1 million in sales has been transacted. It should be noted that Credits can be sold and resold on the private market numerous times until they are redeemed or retired and no longer in circulation which is reflected in the total sales number.

The complete history of Credit sale prices by year and Town can be viewed on the Commission's website at:

http://www.pb.state.ny.us/psc/psc_credit_sales_1996_to_present.pdf

Intermunicipal and Intertown Flows of Credits

As of 1/1/11, a total of 95.81 Credits have crossed a municipal boundary (town or village) from their sending parcel to their receiving parcel, representing approximately 25.7% of all redeemed Credits, or approximately 1 in every 4 Credits redeemed. Of these, 17.11 Credits crossed municipal boundaries in 2009-10.

From a strictly intertown perspective, 60.49 of these 95.81 credits crossed a Town boundary, representing 16.3% of all redeemed Credits, or approximately 1 in every 6 Credits redeemed. Of these, 14.08 Credits crossed into another Town in 2009-10. The majority of the intermunicipal Credit transfers in 2009-10 were intertown as well.

Most of the intermunicipal Credit transfers were effected through Suffolk County Health Department as sewage flow intensity increases. There was, for the first time in 2009, a 0.15 Credit redemption made by a property owner in the Pine Barrens Compatible Growth Area to the Commission to satisfy, in part, a land use violation.

Clearinghouse Funds

As of December 31, 2010, the Clearinghouse has approximately \$3.38 million in the Credit Clearinghouse's bank account that is administered by the Suffolk County Treasurer's Office. There were no disbursements of any of these funds during 2009-2010, nor were there any new deposits. No Credits were purchased or sold by the Clearinghouse during this time period.

Easement Compliance and Enforcement (CAE) Activity

The Commission's CAE Coordinator works with the Commission's Land Use Division to perform conservation easement monitoring of the parcels that are enrolled in the Credit Program. Onsite inspections and baseline documentation reports for 725 of the 754 parcels in the Credit Program have been completed which represents approximately 96.2% of these parcels. To date, no easement violations have been found, yet numerous field conditions either unrelated to the easement parcels, affecting nearby parcels or road right of ways have been documented and addressed through the CAE Division's Incident Reporting (IR) System. These formal Incident Reports are then tracked until the field condition irregularity is resolved, usually in close coordination with public lands managers, highway departments, park or environmental conservation police, or other agencies. Typical conditions include dumping, off road vehicle violations, vandalism or public property damage.

You can access the complete list of parcels that are enrolled in the Credit Program and protected by conservation easements at:

http://www.pb.state.ny.us/pbc/pbc_parcel.pdf

Policy Initiatives

A major focus of the Clearinghouse in 2009 and 2010 was the Clearinghouse Board's recommendation to the Commission to include in the Commission's proposed Comprehensive Plan Amendments a new development standard that would require a specific percentage of Credits to be redeemed by developers for development projects in the Compatible Growth Area that seek to increase the density or intensity for a project above what is allowed by current zoning. The matter is still pending before the Commission.

The Clearinghouse Board adopted a resolution at its December meeting to send a new outreach mailing to Core area property owners to encourage them to participate in the Credit Program. This mailing is anticipated to be sent out in January, 2011.

Easement Protected Lands and Pine Barrens Credits As of January 1, 2011

	Brookhaven	Riverhead	Southampton	Total	Change in 2009	Change in 2010	Change in 2009-10
Parcels	342	24	407	773	+34	+37	+71
Acres	715.815	514.008	660.716	1890.539	+14.05	+53.54	+67.59
Average parcel size	2.09 ac	21.42 ac	1.69 ac	2.4 ac	-0.15	-0.1	-0.25
Credits generated	462.32	171.11	285.37	918.8	+12.61	+11.92	+24.53
Credits redeemed	214.89	47.48	110.434	372.804	+22.74	+14.2	+36.94
Credits not re-deemed	247.43	123.63	174.936	545.996	-10.13	-2.28	-12.41
Credits sold ¹	390.70	127.73	208.60	727.03	+18.72	+54.3	+73.02
Total value of PBC transactions through this date	\$15,453,585	\$2,374,440	\$13,216,710	\$31,044,735	+\$1,483,436	+\$2,884,682	+\$4,368,118



Pine Barrens Discovery Day

Environmental Education and Outreach Division
2009 - 2010

The Education and Outreach mission statement (revised December 2010):

"To promote stewardship through awareness, appreciation and understanding to Long Island residents of all ages on the critical role the Central Pine Barrens serves in maintaining their quality of life. This includes its species, landscapes, natural communities, groundwater protection, cultural and historical resources".

During 2009 and 2010, the Environmental Education and Outreach Coordinator, through the Commission's Education and Outreach Program continued to support the Commission with its central mission and to provide educational opportunities on the Central Pine Barrens to citizens of Long Island.

For 2009 and 2010, this program continued to reach out and connect with thousands of youth and adults through community outreach events, festivals, speaking engagements and school programs. With **direct** outreach through hands on, interactive, k-

12 school programs based on New York State standards, the program reached a total of **2,935** classroom students and teachers in 2009 and in 2010, this program similarly provided direct outreach to **3,172** students/ adults and **45** teachers, that included senior interactive programs.

The Education Coordinator works cooperatively with staff and all Central Pine Barrens Commission divisions as well as Councils, such as the Wild-fire Task Force, the Protected Lands Council and the Law Enforcement Council on related public education initiatives and outreach.

A 2011 Education Plan will be submitted for approval at the January 2011 Pine Barrens Commission meeting.

Indicated below are the education and outreach projects of significance that were completed in 2009 and 2010.

- **Designed, edited and distributed Pine Barren Education programs and curriculum resource materials (2009 and 2010) (This includes hands on interactive programs for school, scout groups and library visits):** The following 4 interactive, hands-on education programs were completed and presented during 2009 and 2010

1) *Pine Barrens Ecology,*



- 2) Barrens to Bay,
- 3) Recycle, re-use, and reduce, and
- 4) Long Island biodiversity.

All programs are correlated to the New York State Learning Standards.

- In 2009, a total of **9** school districts were visited, 2 of which are new for 2009, which resulted in **2,935** students and teachers being reached. In 2010, a total of **12** school districts were visited, 3 of which are new for 2010, which reached **3,172** students and **45** teachers.

- The Environmental Education and Outreach Coordinator continues to work in concert with Brookhaven National Lab's Open Space Stewardship Program (OSSP) that has over 20 school districts participating on various projects and activities, including a Long Island Biodiversity teacher training over their summer training session. An in depth partnership with BOCES was also pursued with the Brookhaven Technical Center and the Oakdale campus.



- Thousands of residents have been indirectly reached through the Educator Coordinator's and Commission staff's participation in 7 outreach events, festivals and/or speaking engagements in 2009 and 9 similar outreach events in 2010. Events for both 2009 and 2010 included the Suffolk County Earth Festival, Long Island Envirothon, Wertheim Wildlife Refuge's Migratory Bird Day, Brookhaven Fall Festival, Riverhead County Fair, and Pine Barrens Discovery Day. In addition, staff participated in the Heckscher State Park Earth Fest in 2009 and the Science Teachers Association of New York State (STANYS), and the Suffolk Alliance of Sportsmen, Inc. (SASI) Hunting and Fishing Day in 2010.

- **Annual Discovery Day Event (2009 and 2010):** On June 13th, 2009 the second annual Pine Barrens Discovery Day was held by the Commission. There were a total of approximately 115 attendees with 15 vendors, 16 workshops, and 6 walks performed that day. On June 12th, 2010 the second annual Pine Barrens Discovery Day was held. There were a total of approximately 200 attendees with 15 vendors, 8 workshops, and 3 walks performed that day. This

event continues to be a successful collaboration of federal, state, town, academic and non-profit partners.



Discovery Day Birds of Prey Fun Shop presented by
Quogue Wildlife Refuge

- **Developing interpretive trail signs on the Dwarf Pine Trail, Westhampton (2009):** A series of 4 interpretive signs are being designed for the 6/10 mile Dwarf Pine trail. The theme of these signs will be "Dwarf Pitch Pine Forests provide a habitat rich in resources".

- **Barrens to Bay Summer program (2009 and 2010):** For a second year in 2009 the Central



2009 Barrens to Bay Program

Pine Barrens Commission partnered with the Long Island Maritime Museum (LIMM) to provide a Summer program to the youth of Long Island. This year a week was added to enable a 7-week program to be offered again that was entitled "**Barrens to the Bay**". In addition to the 7 weeks of camp for youth ages 6-12, 5 educators/counselors were trained on Pine Barrens ecology to provide a quality, fun, educational program.

Three days of the five-day program in 2009 focused on Pine Barrens Ecology and Long Island ecosystem connections. Program activities included plant and animal adaptations, scavenger hunts, animal tracking, plant identification, seining, use of dip nets, as well as soil and water sampling. The Commission signed a Memorandum of Agreement with LIMM for a 5-year partnership for this summer program. The program was continued again in 2010 and provided 6 weeks of camp for youth ages 6-12, with 4 educators/counselors trained on Pine Barrens ecology. Every day focused on Pine Barrens Ecology and Long Island ecosystem connections, and included a full day visit to Wertheim Wildlife Refuge in the Central Pine Barrens and other fun filled, educational activities similar to 2009.

- Improving Stewardship In Concert With our International "Twin" - Pisa, Italy Regional Parks - Twinning program (2009 and 2010):** The Education Division continues to strengthen the ongoing collaborations with Migliarino - San Rossore - Massaciuccoli (MSRM) Regional Park in the Tuscany Region (near Pisa), Italy in 2009 and 2010.

The program involves an International Student Biodiversity Education partnership for high school students in Italy's MSRM region and the Long Island Pine Barrens region to compare, contrast and research each regions' biodiversity. This will happen through research, GPS mapping, Google earth mapping software and frequent web-conferences between the students. Funding provided from Brookhaven Science Associates in 2009 (and again in 2010) enabled Commission staff and a Longwood High School professor to visit Pisa to meet and develop a solid student program in February with the Italian school counterparts.



Biodiversity Teleconference —Connecting students from Longwood High School With students in Pisa, Italy Students

- ⇒ In May, 2009, Stephen Jones, the Pine Barrens Commission Advisory Committee Chairperson attended the annual MSRM Park festival to sign a 5-year agreement between the Central Pine Barrens Commission, Migliarino - San Rossore - Massaciuccoli (MSRM) Regional Park,

Longwood High School and Liceo Scientifico High School in Pisa. In October, 2009, a very successful introductory web conference with Liceo Scientifico students and Longwood High School students was held. Various habitats, biodiversity and specific species of interest were discussed. The students showed great interest and look forward to the next web conference.

- ⇒ In April 2010, staff, and a teacher from the Department of Energy Academies Creating Teacher Scientists (DOE ACTS) traveled to Pisa to provide an opportunity to compare the Carmans River Watershed study to their Arno River, and a Molecular Ecology course for students to compare the DNA of common dragonfly species from MSRM park and the Central Pine Barrens. In October, 2010 a successful student research forum was conducted with Longwood HS, Sayville HS, and Patchogue Medford HS, three of the four Pine Barrens schools who are participating in this exchange with Liceo Scientifico in Pisa. Bellport High School is also participating in this program.

The Education Coordinator plays a key role as the Commission's liaison with the MSRM partners by providing interpretive assistance and ensuring the MSRM colleagues visited key Pine Barrens parks and areas, in addition to other venues of interest while they were here to speak at the 2010 Pine Barrens Research Forum.



2009 Warbler Woods—Longwood High School Student collecting samples

- **Plan, establish and build Pine Barrens Education Center (2009):** Visits to 2 potential sites of interest were completed in 2009. Meetings continue to take place to further this project. The Town of Brookhaven's building in Shirley and Suffolk County Water Authority's building in Westhampton are both sites of interest. In 2010 other sites of interest will be visited. Criteria for location selection are being developed for the proposed education center. The Commission's education staff is serving on the U.S. Fish and Wildlife Service's advisory board for the development of their new state of the art Visitors Center at Wertheim Wildlife Refuge.
- **Create and maintain a Central Pine Barrens Speakers Directory (2009):** Updated and added new contacts to the Commission's Central Pine Barrens Speakers Directory. Knowledgeable volunteers who have extensive experience speaking to k-12 students are listed in this directory. These speakers will be invaluable in assisting the Commission in responding to Pine Barren program requests. Speakers are listed by topic of expertise; wildlife, plants, history, culture, archeology, recreation and science and ecology. It is the Education Program's aim to improve and expand the citizens of Long Island's knowledge of the Central Pine Barrens.
- **Environmental Education and Outreach Committee (2009 and 2010):** This committee and its 3 subcommittees, facilitated by the Environmental Education and Outreach Coordinator, continue to meet at least quarterly to work on various Commission-sponsored education and outreach initiatives to deliver to the public that include: the development of education modules, Discovery Day and the Visitor Center. In 2010, the Environmental Education and Outreach Committee carried out all of its intended projects. The committee met in December 2010 to re-evaluate its goals and responsibilities, and revised its Mission Statement to encompass a holistic stewardship

focus. The committee, which consists of educators from various backgrounds, continues to provide vital assistance to the education and outreach coordinator

- **Carmans River Student Research Project (2010):** This project involves various partner groups working with Brookhaven National Lab's National Synchrotron Light Source (NSLS), Office of Education Programs, and their Open Space Stewardship Program (OSSP) to monitor and determine the heavy metal content in sediment and plant and animal life of the Carmans River in the Core Area of the Pine Barrens. Participants include ten schools districts in the New York City and Long Island area, and the Pisa, Italy schools involved in the Twinning Program. The schools are also using the NSLS process to analyze and compare the sediment samples from the Arno River in Pisa to samples obtained from the Carmans River.



Melissa Griffiths, Environmental Education and Outreach Coordinator with Barrens to Bay students

Outreach Coordinator with Barrens to Bay students

- **Developing a formal education partnership with Wertheim Wildlife Refuge and U.S. Fish and Wildlife Service (2010):** Wertheim would like to officially partner with the CPBC on educational efforts, which would include, but not be limited to summer camp, on-site educational and outreach programs, regular use of new interpretive visitors center and their environmental education wing.

Other education and outreach activities for 2009 and 2010:

- Elementary, Middle School, and High School Career Days (2009 and 2010)
- Courtyard Development in Sayville SD, focusing on incorporating Pine Barrens field trips. With our help, the school achieved the Wildlife Federation's certified wildlife habitat designation. (2009)
- K-12 teacher training in the area of Long Island biodiversity and Pine Barrens Ecology (2009 and 2010)
- Developed and sustained partnerships to advance the mission of the Central Pine Barrens Commission (2010)
- Provided biodiversity web conferences with schools from the Sayville SD; Glasgow, Scotland and Lyon, France that focused on bird studies. (2010).

Research and Twinnings Programs

The *Annual Pine Barrens Research Forum* is sponsored by Brookhaven National Laboratory, Central Pine Barrens Joint Planning and Policy Commission, L.I. Groundwater Research Institute at Stony Brook University and the Foundation for Ecological Research in the Northeast and is held at Brookhaven National Laboratory in Upton, New York, typically the first Thursday and Friday in October. The Research Forum focuses has a specific topical theme each year and culls speakers involved in significant research from all over the Country and Europe. Copies of the Research Forum proceedings, which include speaker abstracts, poster session, exhibits and display information, are available on request from the Commission's office by calling (631) 224-2604.

The Fourteenth Annual Pine Barrens Research Forum was held on
Thursday & Friday, October 1 & 2, 2009

"Laying a Foundation for Policy through Research".

There were approximately one hundred thirty six attendees for Thursday's seminars. Below is an outline of the topics that were presented during the morning and afternoon seminars and the poster session. In addition there were numerous displays and exhibits.

PRESENTATIONS & PRESENTERS — Thursday, October 1, 2009

Morning

KEYNOTE: Ecosystem based management: What it is and what it means for the Long Island Pine Barrens Maritime Reserve. David Conover, School of Atmospheric and Marine Sciences

An ecological integrity assessment of the New Jersey Pinelands. Nicholas A. Procopio III, New Jersey Pinelands Commission

Climate change, rising sea levels and storm surges: What's in store for the Pine Barrens? Malcolm Bowman, School of Atmospheric and Marine Sciences

The basics of mercury wet deposition, and an overview of monitoring results from the New Jersey area. David Gay, National Atmospheric Deposition Program, Central Analytical Laboratory, Illinois State Water Survey

Forest health and wildlife populations. Stephen Teale, Department of Environmental and Forest Biology, State University of New York,



Afternoon

KEYNOTE: Pairing with Pisa: The current state of the Twinnings program between the Central Pine Barrens preserve and the Migliarino - San Rossore - Massaciuccoli (MSRM) Regional Park in Pisa, Italy. Stephen M. Jones, Chair (former), Central Pine Barrens Advisory Committee

MSRM Park: Landscape and agriculture. Elisabetta Norci, MSRM Regional Park

MSRM Regional Park (Italy): Heritage of human and natural history. Carlo Galletti, MSRM Regional

Park

Denitrification in Long Island's aquifer - Gilbert Hanson and Caitlin Young (presenter), Stony Brook University, Geosciences Department

Elevated ground level ozone on Long Island. Daniel Knopf, Institute for Terrestrial and Planetary Atmospheres

Ecological impacts of elevated ozone on plants and animals. Howard S. Neufeld, Appalachian State University, Department of Biology,

Risky business: Biological invasion through aquarium releases. Dianna K. Padilla, Stony Brook University, Department of Ecology and Evolution

A preliminary population study of southern flying squirrel at Brookhaven National Laboratory. Jennifer Higbie, Brookhaven National Laboratory, Environmental Services Division

Poster Session

The poster session provided a diverse display of research activities undertaken by students and the scientific research community, which included research institutions such as Stony Brook University and Brookhaven National Laboratory. The topics focused on research related to biodiversity studies, stewardship, geologic origins of the Atlantic coastal plain ponds and dry valleys south of the Ronkonkoma moraine, Carmans River water quality, aquatic invasives removal, among other topics.

WEB CONFERENCE & FIELD TRIP

Friday, October 2, 2009

On Friday, October 2, 2009 there was a very informative web conference that focused on, "Biodiversity: Central Pine Barrens Long Island, NY to Migliarino-San Rossore-Massaciuccoli (MSRM) Park Pisa, Italy - A Twinning Experience" and a field exploration of the Coastal Plain Ponds of the Peconic Headwaters.

Web Conference on Biodiversity: Central Pine Barrens Long Island, NY to Migliarino-San Rossore-Massaciuccoli (MSRM) Park Pisa, Italy - A Twinning Experience

The web conference provided a dynamic realtime educational exchange opportunity between Longwood High School on Long Island and the Liceo Scientifico "Ulisse Dini" High School in Pisa, Italy. Longwood High School Professor Ivan Suarez and twenty four of his Human Ecology students were in attendance for their first interactive web conference with the students from "Ulisse Dini" Liceo Scientifico. Professor Isabella Marini from the Liceo Scientifico introduced her school, the students, Migliarino-San Rossore-Massaciuccoli Park Director Sergio Paglialunga, Park staff, and the Liceo Scientifico administration and provided an overview of their science curriculum, which focused upon biodiversity, marine sciences, chemistry and earth sciences.



Each group introduced their projects that covered a variety of subjects related to biodiversity studies undertaken by each school.

Elisabetta Norci and Carlo Galletti of the MSRM Park Board spoke to their colleagues in Pisa and described the similarities between the ecosystems of the "twin" regions and the variety of research and educational opportunities that the two areas have in common.

Coastal Plain Ponds of the Peconic Headwaters Field Trip

A total of 29 field trip participants, which included the field session leaders, hiked through parts of Suffolk County's Robert Cushman Murphy County Park, NYS Department of Conservation's Otis Pike Preserve, and the eastern woodlands at Brookhaven National Laboratory from the easterly boundary to the East Firebreak. Tom Casey of the LI Greenbelt Trail Conference and the LI Pine Barrens Society led the 4.9 mile hike. Marilyn Jordan (The Nature Conservancy), Robert Marsh (NYS DEC), Tim Green (Brookhaven Lab), and Tom Casey shared their knowledge of historic and environmental topics along the trail. Eight coastal plain ponds were visited: Horn Pond, Peasy's Pond, Round Pond, Woodchopper's Pond, Sandy Pond, Grassy Pond, Cryan Pond, and Zeek's Pond.

Fifteenth Annual Pine Barrens Research Forum

Long Island Pine Barrens Maritime Reserve: Beyond the Trees

September 30 & October 1, 2010

There were approximately one hundred thirty six attendees for Thursday's seminars. Below is an outline of the topics that were presented during the morning and afternoon seminars and the poster session. In addition there were numerous displays and exhibits.

PRESENTATIONS & PRESENTERS

Thursday, September 30, 2010

Morning

KEYNOTE: Visions of the Pine Barrens Maritime Reserve. The Honorable Steve Englebright, Assemblyman, State of New York

Ray Corwin: a retrospective. Dr. Timothy Green, Cultural and Natural Resource Manager, Brookhaven National Laboratory



Mill Creek—photo by D. Rogers

Refining simulation of recharge and discharge processes in a groundwater solute-transport model to improve real-time estimates of freshwater and nutrient fluxes in a submarine groundwater discharge zone. John A. Colman, Hydrologist, Massachusetts District, U.S. Geological Survey

Understanding the effects of point and non-point sources on pollution of the Forge River, a South Shore Estuary. Bruce Brownawell, Associate Professor, School of Marine and Atmospheric Sciences, Stony Brook University

Human-associated avian mortality and window collisions as a leading lethal source. Daniel Klem, Sarkis Acopian Professor of Ornithology and Conservation Biology, Muhlenberg College

Lunch Agenda - Guest of Honor: Luigi E. Cipriani, Director of Integrated Coastal Zone

Afternoon

KEYNOTE: Beach accretion and erosion at Migliarino San Rossore Massaciuccoli Regional Park, Italy. Enzo Pranzini, Professor, Dipartimento di Scienze della Terra, University of Florence

Coastal resilience: adapting natural and human communities to sea level rise and coastal hazards. Nicole Maher, Wetlands Specialist, The Nature Conservancy

Fire Island to Montauk Point Reformulation Study. Stephen Couch, Section Chief Plan Formulation Branch, Planning Division, Coastal Section, New York District, U.S. Army Corps of Engineers

Eelgrass (*Zostera marina*) restoration on Long Island: Lessons learned and future opportunities. Kimberly Manzo, Habitat Restoration Specialist, Cornell Cooperative Extension

***Limulus* in the limelight: 455 million years in the making and endangered? The plight of the North American Horseshoe Crab.** John T. Tanacredi, Professor and Chairman, Department of Earth and Marine Sciences, Dowling College

Poster Session

The poster session provided a diverse display of research activities undertaken by students and the scientific research community, that included research institutions such as Stony Brook University and Brookhaven National Laboratory, on topics related to tiger beetles, Beaver Dam Creek, coastal plain ponds, flying squirrels and metal and vegetation studies related to the solar farm at BNL, among other topics.

WEB CONFERENCE & FIELD TRIP —Friday, October 1st 2010

Web Conference: Student Science and the National Synchrotron Light Source (NSLS)

Using local river systems to compare and discuss the heavy metal elements found in sediment samples from the Carmans River in the Pine Barrens and Migliarino-San Rossore-Massaciuccoli (MSRM) Park in Pisa Italy. The findings from all participating schools were compared to samples and data from the flood plain of the Arno River in MSRM Park, Pisa Italy

Longwood High School professor Ivan Suarez, and 34 of his students were in attendance as well as 25 of Dr. Robert Borowski's students from Patchogue-Medford High School. Also in attendance were staff of BNL's Office of Education, the Central Pine Barrens Commission, Longwood and Patchogue Medford School Districts, US Fish and Wildlife Refuge, and the NYS Department of Environmental Conservation (DEC).

Melissa Griffiths welcomed the groups, and introduced the MSRM Twinning program and the "Student Science: A Twinning Experience" Program, the history, the partners, the day's student forum agenda and its participants.

Fish Thicket, which was adopted by the Patchogue-Medford School District in 2006, is a 100-acre woodland preserve located along Swan Creek, which, although it is located outside of the Central Pine Barrens, contains important Pine Barrens habitats. Patchogue-Medford High School students from Club Fish Thicket and the AP Environmental Science program provided a Power Point presentation on the natural history of Fish Thicket, and the recent results of water quality testing.

Longwood High School students then presented video and Power Point presentations on the natural history of the Carmans River, highlighting its water quality and biodiversity and research they have conducted. Mr. Suarez discussed the method used to collect sediment samples from the Upper Carmans River, and some of the NSLS data findings.

Dr. Keith Jones provided a powerpoint presentation and discussed the results from heavy metal testing of sediment samples collected from the Carmans River and Arno River in Pisa, Italy. There were traces of arsenic, lead and other metals found in varying areas of the Carmans and Arno River flood plain. Dr. Keith Jones also discussed how BNL could serve as a resource for the study of the Pine Barrens ecosystem to other schools districts with available facilities (i.e., NSLS, Sequencing Center, etc.), scientists, and educational programs (OSSP, DOE-ACTS). Melissa Griffiths concluded the program with closing remarks and expressed appreciation for the partners in this exciting program.

Plum Island Field Trip (Cancelled due to weather conditions)

Plum Island Animal Disease Center, a Federal facility managed by the USDA under the Department of Homeland Security (DHS), is a research laboratory working to protect farm animals, farmers and ranchers, the nation's farm economy and export markets and, in essence, the nation's food supply. The field trip included a tour of the Laboratory and the natural and historical environment found on Plum Island.

Litigation Involving the Pine Barrens Commission
During 2009 -2010*

Sequence Number	Subject	Plaintiff(s)	Defendant(s)	Court and Index Number	Date Filed	Date Decided*
21	Pine Barrens Credit allocations to parcels in Manorville (Brookhaven)	Ringhoff Family LLC #1	Commission	Supreme Court, Suffolk County 08-26991	7/17/08	4/8/09
22	Commission jurisdiction re development proposal	Robert Liere, John Liere, and Lorraine Liere	Commission	Supreme Court, Suffolk County 09-5910	3/12/09	10/13/10
23	07/21/10 American Physical Society hardship permit, Ridge, Brookhaven	LI Pine Barrens Society, Richard Amper	Commission	Supreme Court, Suffolk County 29130/2010	7/21/10	

**A complete table of all litigation involving the Commission and related Court decisions since 1993 to the present is available on the Commission's website at http://www.pb.state.ny.us/legal/chart_litigation.htm*

Staff and Contact Information

Division & Principal Staff Contacts 2009-2010	
Administration	<i>Ray Corwin/ John Pavacic Judy Jakobsen Robin Mills Carol Sholl</i>
Compliance & Enforcement	<i>Lawrence Hynes</i>
Education & Outreach	<i>Melissa Griffiths</i>
Land Use & Planning	<i>Julie Hargrave</i>
Legal	<i>John Milazzo</i>
Pine Barrens Credit Program	<i>Judy Jakobsen John Milazzo Carol Sholl Jerry Tverdyy</i>
Science & Stewardship	<i>Ann Carter Karen Eichelberger</i>

Office Location & Contact Information

624 Old Riverhead Road (CR 31)

Westhampton Beach, NY 11978

Voice: 631-288-1079

Fax: 631-288-1367

Ray Corwin Pine Barrens Reference Library

(open to public, non- lending)

www.pb.state.ny.us info@pb.state.ny.us

Office & Library access hours: Monday—Friday 8:30 am to 5:00 pm

