

Central Pine Barrens Commission

2008 Report of Activities

(January 2009)



Peter A. Scully
Chair

Lori Baldassare
Member

Philip J. Cardinale
Member

Linda A. Kabot
Member

Steve A. Levy
Member

P.O. Box 587
3525 Sunrise
Highway
2nd Floor
Great River, NY
11739-0587

Phone (631) 224-2604
Fax (631) 224-7653
www.pb.state.ny.us



The Carmans River in the Wertheim National Wildlife Refuge

Photo by Ray Corwin

Central Pine Barrens Joint Planning and Policy Commission

Peter A. Scully, Commission Chair, Governor's Appointee,
and Regional Director, NYS Dept. of Environmental Conservation

Lori Baldassare, Member and Brookhaven Town Deputy Supervisor (*Since January 2009*)

Brian X. Foley, Member and Brookhaven Town Supervisor (*During 2008*)

(Designated Representatives:

Brenda Prusinowski, John Turner)

Philip J. Cardinale, Member and Riverhead Town Supervisor

(Designated Representatives:

Daniel McCormick, Richard Hanley)

Linda A. Kabot, Member and Southampton Town Supervisor

(Designated Representatives:

Martin Shea, Jeff Murphree)

Steve A. Levy, Member and Suffolk County Executive

(Designated Representatives:

Carrie Meek Gallagher, Thomas Isles)

Staff

(from the Suffolk County Water Authority)

Ann Carter

Raymond Corwin

Karen Eichelberger

Melissa Griffiths

Julie Hargrave

Lawrence Hynes

Judith Jakobsen

John Milazzo

Robin Mills

Carol Sholl

Yaroslav Tverdyy (*intern*)

Office & Contact Information

P.O. Box 587

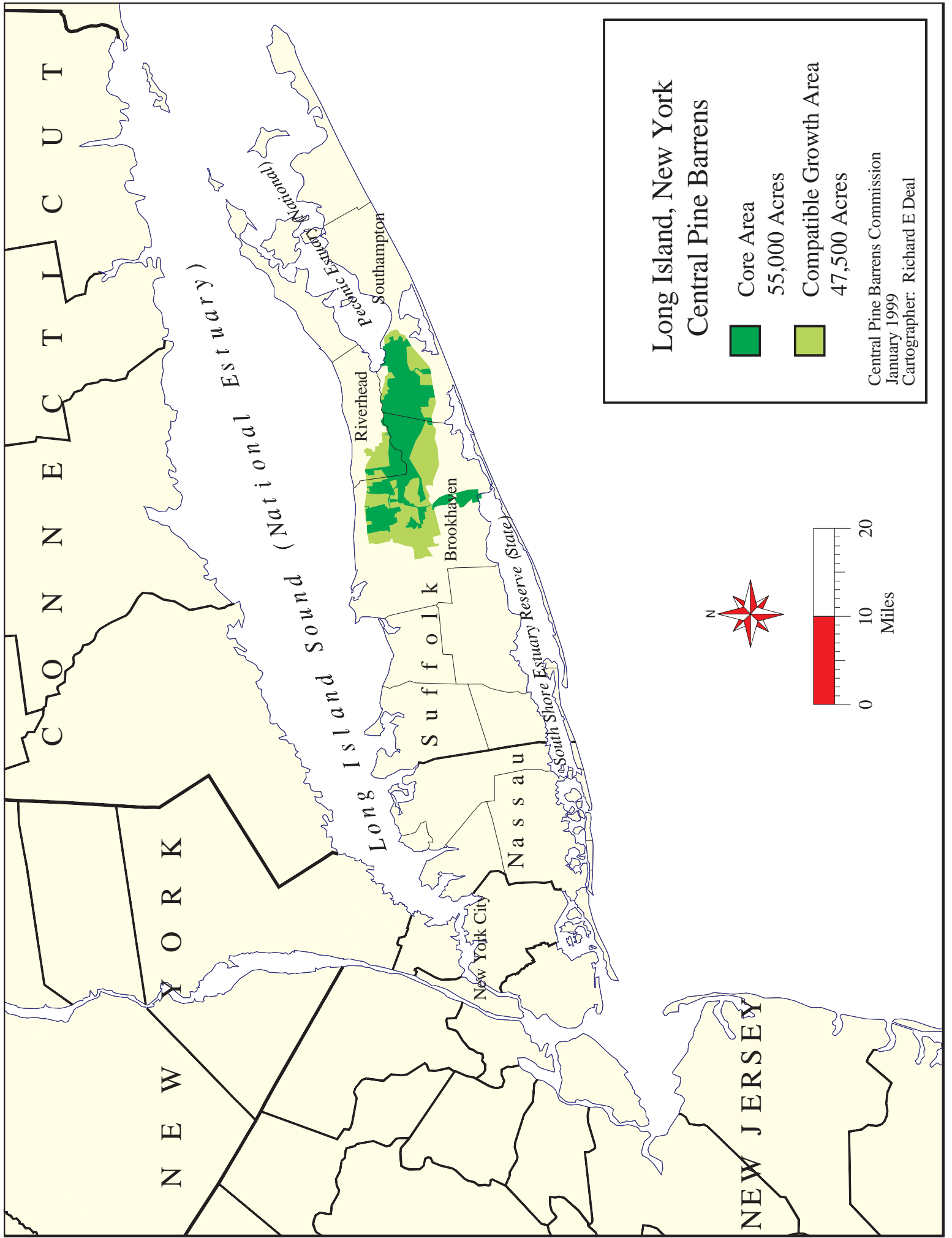
3525 Sunrise Highway, 2nd Floor

Great River, NY 11739-0587

Voice: 631-224-2604 Fax: 631-224-7653

www.pb.state.ny.us

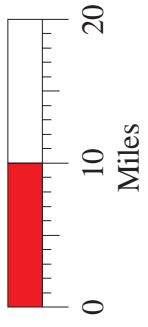
info@pb.state.ny.us



Long Island, New York Central Pine Barrens

- Core Area
55,000 Acres
- Compatible Growth Area
47,500 Acres

Central Pine Barrens Commission
January 1999
Cartographer: Richard E Deal



The Central Pine Barrens in 2008

The Central Pine Barrens Commission is pleased to present
this Report of Activities for the calendar year 2008.

*This report is dedicated to everyone -
from citizens to agency officials to private organizations -
who have so generously and willingly contributed their energy and expertise
to the protection and stewardship of the Central Pine Barrens.*

This report includes sections on each of the following (in the order indicated), many of which
include samples of 2008 milestones after each section:

- Pine Barrens Advisory Committee Report
- Planning and Land Use Report
- Pine Barrens Credit Program and Clearinghouse Report
- Compliance and Enforcement Report
- Pine Barrens Law Enforcement Council Report
- Science and Stewardship Report
- Protected Lands Council Report
- Environmental Education and Outreach Report
- Wildfire Task Force Report
- Research and Park Twinings Report
- Summary Charts for Litigation, Staff, and References for Further Reading

Pine Barrens Advisory Committee Report

**Stephen M. Jones, Chief Executive Officer, Suffolk County Water Authority,
and Chair, Central Pine Barrens Advisory Committee**

**Richard L. Amper, Executive Director, Long Island Pine Barrens Society,
and Vice Chair, Central Pine Barrens Advisory Committee**

Following the Pine Barrens Advisory Committee's intensive 2007 review of the proposed amendments to the Pine Barrens Comprehensive Land Use Plan, the focus of work on those amendments shifted to the Commission staff, and the Committee looked forward to its next task in support of the Pine Barrens Act and the work of the Commission.

Consequently, in 2008 the Commission enlisted its assistance in a new initiative known as the **Committee Needs and Structures Study**. This self study effort is now underway as a follow up, or "phase two" companion, to the **2005 Staffing and Administrative Needs Study** supported by the Advisory Committee, and now being implemented. (See www.pb.state.ny.us/general/report_2005_staffing_and_admin_051019.pdf for the original study.)

The 2005 "Phase One" Self Study: Internal Organization

The 2005 self study specified the most important topical areas of the Commission's work and the best strategies for implementing them. This study was the origin of the present divisions of staff work into Land Use, Science & Stewardship, Compliance & Enforcement, Education & Outreach, Research, Legal, and Administrative. That effort also defined the future staff specializations and positions, and those have also been significantly implemented.

The 2008-2009 "Phase Two" Self Study: External Organization

Historically, the Commission has also relied upon topically defined committees (councils, subcommittees, etc.) to produce Plan components, undertake field efforts, provide advice, etc., and their quantity and diversity has varied through the years. This approach complemented the early work of the Commission staff. With this new effort, the Commission seeks to achieve the best balance of numbers of committees, their specialities, and the lines of organization.



Advisory Committee members are active in many ways. Here, the Long Island Greenbelt Trail Conference's Tom Casey assists with a 2008 ATV Damage Mitigation event.

To structure this work, the Advisory Committee met in December 2008 with the participation of Mr. John Turner representing Brookhaven Town and the Commission. Committee members received an overview of all existing committees, along with their origins, purpose, and other characteristics. With the start of 2009, the Committee will begin to examine each existing committee in turn, then make recommendations to the Commission for each one, plus overarching suggestions for consolidation, communication, etc.



The Advisory Committee played a crucial role in the original development of the Pine Barrens Comprehensive Land Use Plan. This assistance also helped to adopt the final Plan, and thus avoid triggering the 1993 law's "sunset" provision.

Planning and Land Use Report

The purpose of the Planning and Land Use Division is:

“to ensure that the use of land within the Central Pine Barrens area conforms to New York State Environmental Conservation Law (ECL) Article 57 and the Central Pine Barrens Comprehensive Land Use Plan (the "Plan"), and to guide its development.”

The Division provides both long range and current planning on a regional basis for the Central Pine Barrens area. Other services the Division provides are:

- **Review and processing of development permit applications** to the Commission.
- **Review of town and other agency land use management plans for conformance to Article 57** and the Plan.
- **Preparation of State Environmental Quality Review Act (SEQRA) documents** and SEQRA coordination with other agencies.
- **Researching and drafting of land use policy** to guide the Commission’s land use work.
- **Provision of guidance to the Commission Councils, Advisory Committee, and member towns** on land use matters and policy under the Commission's purview.
- **Support of the Compliance and Enforcement Division** with the investigation of land use incidents and violations, and the monitoring and review of Commission permit conditions and conservation easements for conformance.
- **Serving as the liaison to the public and government agencies** for inquires related to land use and development in the Central Pine Barrens, including jurisdictional inquiries.
- **Preparation of Pine Barrens Comprehensive Land Use Plan updates.**



Pine barrens development project sites often include a mix of preexisting uses and land cover, as in this Eastport location reviewed in 2007. Here, a “conservation subdivision” design was approved by the Commission.

Conformance and SEQRA Reviews in 2008 Across the Central Pine Barrens

Within the Central Pine Barrens, some land use projects are principally handled at the Town

planning level, and are forwarded to the Commission for its direct permit review under select circumstances. Nonetheless, the Commission's Planning and Land Use Division monitors and reviews all such development projects in the Central Pine Barrens Area for compliance with ECL Article 57 and the Plan.

During 2008, the Planning and Land Use staff:

- **Provided comments on State Environmental Quality Review Act (SEQRA) coordination referrals** from the three Central Pine Barrens towns of Brookhaven, Riverhead, and Southampton, Suffolk County and State agencies. Approximately 50 such SEQRA referrals were received in 2008.
- **Reviewed Town Land Use Plans for conformity with ECL Article 57** and the Plan, specifically:
 - the Town of Southampton East Quogue Generic Environmental Impact Statement (GEIS),
 - the Town of Brookhaven 2030 Master Plan Update,
 - the Town of Southampton Riverside Hamlet Center and Mixed Use Planned Development District, and
 - the Town of Southampton Wireless Communications Plan



The Pine Barrens Plan contains standards and guidelines for review of new land use proposals in the Compatible Growth Area (CGA) of the barrens. This eastward view of the CGA contains a mix of old and new developments, and illustrates the planning challenges found there.

Review and Processing of Land Use Projects Applying Directly to the Commission

Within the Central Pine Barrens area, some projects require review and permitting by the Commission itself, in addition to all other governmental permits. During 2008, the Planning and Land Use Division reviewed applications, prepared staff reports and drafted decisions for the following projects before the Commission (the status for each is stated as of the close of 2008):

Compatible Growth Area Hardship Applications:

- **Tall Grass Village Planned Development District Development of Regional Significance Application.** This was a change of zone to construct 352 residences, 125,000 sf of commercial office space and a sewage treatment plant on 320 acres located in Shoreham, Town of Brookhaven. Project status: Denied.
- **Rosko Farms Residential Subdivision Compatible Growth Area Critical Resource Area Application (Town of Southampton).** This involved a modification of a prior Commission approval granted on July 20, 2005 concerning approval conditions,

specifically to modify the conservation easement requirement to be covenants and restrictions. Project status: Modifications approved.

Core Preservation Area Hardship Applications:

- **Gazza Monopole Extraordinary Hardship Application.** This involves construction of a 99 foot telecommunications monopole on a 0.34 acre parcel located in Eastport, Town of Southampton. Project status: Application pending completion of a Draft EIS.
- **Jurevitz Core Preservation Area Extraordinary Hardship Application.** This involves construction of single family dwelling, horse barn and paddock on a 3.7 acre wooded parcel in Ridge, Town of Brookhaven. Project status: Incomplete application.
- **Long Island Power Authority Riverhead Substation Expansion Compelling Public Need Application.** This involves an 88,000 square foot expansion and reconfiguration of the substation located on 40.5 acre site in the Town of Southampton near the Riverhead boundary. Project status: Approved.

Long Range Planning and Interagency Outreach

During 2008, several significant long range planning tasks were begun or completed, including:

- **Refinement of Comprehensive Land Use Plan amendments,** involving the review and update of existing development provisions.
- **Work with the Town of Brookhaven to incorporate their proposed Hamlet Centers and Transition Areas** along the Middle Country Road corridor into the regional Plan update.



The Planning and Land Use staff also support the Pine Barrens Credit Program's processing of new applicant sites. One such site is the Boy Scouts' Camp Wauwepex in Wading River, shown above.

- **Presentation of proposed Plan updates to the Advisory Committee** and research into land use policy issues for the Committee.
- **Commencing the development of standardized workshop materials and presentations for outreach to various audiences on topics related to ECL Article 57,** the Comprehensive Land Use Plan, the Commission councils and programs, and conservation easement monitoring.

***Exactly How Many
Land Use
Applications Have
Been Decided ?***

*The Carmans River -
shown here as it flows
through Cathedral
Pines County Park –
traverses both the the
Core and CGA on its
southward journey to
the Great South Bay.*



Pine Barrens Commission Development Project Decisions 1993 through 2008

Year	Core Preservation Area			Compatible Growth Area			Central Pine Barrens		
	Approvals	Disapprovals	Decisions	Approvals	Disapprovals	Decisions	Approvals	Disapprovals	Decisions
1993	0	0	0	0	0	0	0	0	0
1994	6	2	8	6	1	7	12	3	15
1995	7	4	11	12	2	14	19	6	25
1996	7	1	8	9	0	9	16	1	17
1997	8	1	9	0	0	0	8	1	9
1998	3	1	4	3	0	3	6	1	7
1999	3	2	5	3	0	3	6	2	8
2000	1	1	2	0	0	0	1	1	2
2001	7	1	8	1	0	1	8	1	9
2002	4	2	6	0	1	1	4	3	7
2003	2	1	3	2	0	2	4	1	5
2004	1	0	1	4	0	4	5	0	5
2005	3	0	3	6	2	8	9	2	11
2006	1	0	1	4	0	4	5	0	5
2007	0	0	0	3	1	4	3	1	4
2008	1	0	1	0	1	1	1	1	2
Total	54	16	70	53	8	61	107	24	131

**Pine Barrens Commission
Development Applications Summary Chart - 1993 through 2008**

Type	Brookhaven Town	Riverhead Town	Southampton Town			Totals
			Unincorporated	Quogue Village	Westhampton Beach Village	
Core Preservation Area						
Core Hardship	30 Approved <i>(1 annulled by court)</i> 10 Denied 12 Withdrawn 5 Nondev't	4 Approved 1 Denied 2 Withdrawn	16 Approved <i>(1 rescinded by Commission)</i> 5 Denied 14 Withdrawn 1 Pending	0	0	50 Approved <i>(1 annulled by court; 1 rescinded by Commission)</i> 16 Denied 28 Withdrawn 5 Nondev't 1 Pending
Compelling Public Need	1 Approved (partly in Riverhead)	0	3 Approved	0	0	4 Approved
Assertions of Jurisdiction	0	1 Rescinded	0	0	0	1 Rescinded
Core Totals	31 Approved <i>(1 annulled by court)</i> 10 Denied 12 Withdrawn 5 Nondev't	4 Approved 1 Denied 2 Withdrawn	19 Approved <i>(1 rescinded by Commission)</i> 5 Denied 14 Withdrawn 1 Pending	0	0	54 Approved <i>(1 annulled by court; 1 rescinded by Commission)</i> 16 Denied 28 Withdrawn 5 Nondev't 1 Assertion rescinded 1 Pending 105 Total
Compatible Growth Area (CGA)						
CGA Hardships	21 Approved 2 Denied 3 Withdrawn 2 Nondev't 1 Pending	1 Approved 1 Denied	1 Withdrawn	0	0	22 Approved 3 Denied 4 Withdrawn 2 Nondev't 1 Pending
Assertions of jurisdictions	1 Approved <i>(1 approval annulled by court)</i> 1 Denied 1 Withdrawn by sponsor 1 Assertion Rescinded by Commission	1 Withdrawn by sponsor 1 Assertion Annulled by court	0	0	0	1 Approved <i>(1 approval annulled by court)</i> 1 Denied 2 Withdrawn by sponsor 1 Assertion Rescinded by Commission 1 Assertion Annulled by court
Projects in a Critical Resource Area (CRA)	0	(No CRAs)	3 Approved	(No CRAs)	(No CRAs)	3 Approved
Developments of Regional Significance (DRS)	1 Approved 1 Denied 1 Withdrawn	0	1 Approved	0	0	2 Approved 1 Denied 1 Withdrawn
Projects under Interim Goals and Standards (IGS) (No longer applicable.)	20 Approved 3 Denied 2 Withdrawn 3 Nondev't	1 Approved	1 Approved	3 Approved 1 Nondev't	0	25 Approved 3 Denied 2 Withdrawn 4 Nondev't
CGA Totals	43 Approved <i>(1 annulled by court)</i> 7 Denied 7 Withdrawn 5 Nondev't 1 Assertion rescinded by Commission 1 Pending	2 Approved 1 Denied 1 Withdrawn 1 Assertion Annulled by Court	5 Approved 1 Withdrawn	3 Approved 1 Nondev't	0	53 Approved <i>(1 annulled by court)</i> 8 Denied 9 Withdrawn 6 Nondev't 1 Assertion rescinded by Commission 1 Assertion Annulled by Court 1 Pending 79 Total
Total Core + CGA Projects: 184						

Pine Barrens Credit Program and Clearinghouse Report

**James T.B. Tripp, General Counsel, Environmental Defense Fund,
Credit Clearinghouse Chair and Brookhaven Clearinghouse Board Member**

**Andrew Freleng, Principal Planner, Suffolk County Planning Department,
Vice Chair and Suffolk County Clearinghouse Board Member**

Overview:

- All of the latest Pine Barrens Credit reports are at the Clearinghouse Main Page at www.pb.state.ny.us/chart_pbc_main_page.htm
- A one page overview as of 1/1/09 is at www.pb.state.ny.us/pbc/pbc_act.pdf
- The change in those numbers from 1/1/08 to 1/1/09 is shown in one page at www.pb.state.ny.us/pbc/pbc_act_change_08_to_09.pdf (also included here).

Parcels protected by PBC conservation easements:

- As of 1/1/09, the PBC Program has protected 671 parcels totaling 1,753 acres (including the 403 acre Camp Wauwepex Boy Scout parcel; see separate page).
- 14 parcels were enrolled in the program and protected by easements in 2008.
- Average parcel size rose to 2.61 acres from 2.05 acres (due to the Scout parcel).
- 649 PBC parcels, or 97%, have been inspected to date, with no violations found.

Credits - generated, outstanding, and redeemed:

- As of 1/1/09, 877.06 Credits have been generated, an increase of 104.86 Credits.
- 320.754 Credits have been redeemed overall, 25.19 of these in 2008.
- 556.306 Credits are outstanding ("unredeemed"), an increase of 79.67 in one year.
- See [www.pb.state.ny.us/chart_pbc_main_page.htm#Certificates and Easements](http://www.pb.state.ny.us/chart_pbc_main_page.htm#Certificates_and_Easements) for a set of detailed reports on Credits issued, conveyed, and redeemed.

Credit allocation appeals:

- One Credit appeal was decided in 2008 (Ringhoff / Manorville; a denial), and that decision is the subject of current litigation.
- To date, there have been 55 Credit appeals, of which 21 resulted in additional Credits, 31 remained unchanged, and 3 were withdrawn by the appellant.
- See [www.pb.state.ny.us/chart_pbc_main_page.htm#LOIs and Appeals](http://www.pb.state.ny.us/chart_pbc_main_page.htm#LOIs_and_Appeals) for a set of reports both summarizing and detailing the Credit appeals.

Intermunicipal and intertown Credit redemptions:

- As of 1/1/09, there have been 34.96 Credits redeemed across municipal boundaries (both "town to town" and "town to village" migrations), representing approximately 11% of all redemptions.
- The largest 2008 intermunicipal transfers were 8.00 Southampton Credits to Brookhaven and 7.84 Credits to Southampton Village. Southampton Credits have also flowed to Islip and to Westhampton Beach Village.
- Looking strictly at intertown transfers, there have been 20.81 Credits redeemed across town boundaries, representing 6.5% of all redemptions.
- All intermunicipal redemptions are through the SC Health Department.
- Details are at www.pb.state.ny.us/pbc/pbc_certs_redeemed_intermunicipal.pdf

Credit sales and conveyances:

- The Program's total sales volume from day 1 to 1/1/09 is now \$26,819,117, of which \$1,276,450 occurred in 2008 conveyances. (None of the Scout's Camp Wauwepex Credits were conveyed or sold in 2008.)
- The average price for a Credit sale (excluding the "no consideration" conveyances) in 2008 was \$81,823.72 per Credit over 15.60 Credits sold in 2008.
- This is a drop in average "unit" price of approximately \$14,500 from 2007.
- No sales of Riverhead Credits occurred in 2008, for the first time since 2003.
- The Clearinghouse does not hold any Credits at this time, nor did it during 2008. No Credit sales in 2008 involved the Clearinghouse as either a seller or buyer.
- A summary of PBC sales prices by year and by town, from 1996 through 2008, is available at www.pb.state.ny.us/pbc/pbc_credit_sales_1996_to_present.pdf
- The complete listing of all conveyances listed by date for each town is available at www.pb.state.ny.us/pbc/pbc_certs_conveyed_by_date.pdf

Clearinghouse funds held by Suffolk County Treasurer:

- No 2008 disbursements occurred; the 12/31/08 balance was approx. \$3.3 million.
- The SC Treasurer's report as of 12/31/08 is available at www.pb.state.ny.us/pbc/sc_treasurers_report.pdf

Remaining Credit generation potential:

- The "parcel by parcel" analysis of potential remaining Credits that could be generated from the Core area was near completion at the end of 2008. The results will be presented to the Clearinghouse, and their comments will be incorporated.
- The Town of Brookhaven planning staff is refining an estimate of the remaining "as of right" redemption capacity under the current "A1 and A2 Residential" rule.

PINE BARRENS CREDIT CLEARINGHOUSE

James T.B. Tripp, Esq., *Chairman*
 Andrew P. Freleng, AICP, *Vice Chairman*
 Robert Anrig, *Member*
 Richard W. Hanley, *Member*
 Mitchell H. Pally, Esq., *Member*

Changes in Easement Protected Lands and Pine Barrens Credits from 1/1/08 to 1/1/09									
	Brookhaven		Riverhead		Southampton		Total		Change from 1/1/08
	1/1/09	Change from 1/1/08	1/1/09	Change from 1/1/08	1/1/09	Change from 1/1/08	1/1/09	Change from 1/1/08	
Parcels	322	1	22	1	327	12	671	14	
Acreage	705.995	0.230	513.548	403.040	533.504	4.450	1753.047	407.717	
Average Parcel Size	2.19	- 0.01	23.34	18.08	1.63	- 0.05	2.61	0.56	
Credits Generated	455.36	0.10	169.11	100.68	252.59	4.08	877.06	104.86	
Credits Redeemed	194.41	6.00	45.44	0	80.404	18.69	320.754	25.19	
Credits Not Redeemed	260.45	- 6.40	123.67	100.68	172.186	- 14.61	556.306	79.67	
Average PBC Sale for Prior 12 Months	\$83,652.17	- \$15,251.34	No sales	No sales	\$80,756.35	- \$9,174.16	\$81,823.72	- \$14,527.82	
PBC Sales Volume	\$14,141,313	\$481,000	\$2,225,440	0	\$10,452,364	\$795,450	\$26,819,117	\$1,276,450	

P.O. BOX 587, 3525 SUNRISE HIGHWAY, 2ND FLOOR, GREAT RIVER, NEW YORK 11739-0587
 631-224-2604 / FAX 631-224-7653
<http://www.pb.state.ny.us>

The Nassau County Boy Scouts' 403 acre Camp Wauwepex in Wading River is now permanently protected by a conservation easement under the Pine Barrens Credit Program!

A great job by everyone involved !! Thank you.



Left: Welcoming sign awaits off Wading River Road.

Top: Deep Pond, a kettlehole lake, lies in the center.

Below: Law Enforcement Council visits camp on Dec. 11th

Lower left: Scouting officials, Commission Chair Scully, and Smokey Bear make it official on Dec. 18th.



***“By the way, just what
are those Credits
selling for these days ?”***

*Pine Barrens Credits,
which protect resources
such as these, now have
a “decade plus” track
record of market values
and sales, so we can
answer this question with
historical data!*



Year	Brookhaven Town			Riverhead Town			Southampton Town			Totals		
	# PBCs	Sales Value	Avg PBC Value	# PBCs	Sales Value	Avg PBC Value	# PBCs	Sales Value	Avg PBC Value	# PBCs	Sales Value	Avg PBC Value
1996	1.00	7,500.00	7,500.00	0.00	0.00	0.00	0.00	0.00	0.00	1.00	7,500.00	7,500.00
1997	31.18	383,140.00	12,288.01	56.17	561,700.00	10,000.00	4.52	48,814.00	10,799.56	91.87	993,654.00	10,815.87
1998	67.88	1,016,760.00	14,978.79	0.10	500.00	5,000.00	5.84	57,500.00	9,845.89	73.82	1,074,760.00	14,559.20
1999	54.95	1,445,902.00	26,313.05	18.19	245,600.00	13,501.92	0.72	8,050.00	11,180.56	73.86	1,699,552.00	23,010.45
2000	36.29	1,280,211.00	35,277.24	6.00	102,000.00	17,000.00	9.71	194,200.00	20,000.00	52.00	1,576,411.00	30,315.60
2001	29.04	1,142,000.00	39,325.07	7.00	118,000.00	16,857.14	0.89	19,900.00	22,359.55	36.93	1,279,900.00	34,657.46
2002	46.21	1,839,400.00	39,805.24	26.98	485,640.00	18,000.00	1.77	53,800.00	30,395.48	74.96	2,378,840.00	31,734.79
2003	60.02	2,920,350.00	48,656.28	0.00	0.00	0.00	4.44	173,450.00	39,065.32	64.46	3,093,800.00	47,995.66
2004	16.85	1,209,550.00	71,783.38	6.00	288,000.00	48,000.00	10.59	912,700.00	86,185.08	33.44	2,410,250.00	72,076.85
2005	2.00	232,500.00	116,250.00	2.15	146,000.00	67,906.98	40.89	3,047,900.00	74,539.01	45.04	3,426,400.00	76,074.60
2006	7.50	830,000.00	110,666.67	1.00	70,000.00	70,000.00	52.30	3,652,250.00	69,832.70	60.80	4,552,250.00	74,872.53
2007	13.68	1,353,000.00	98,903.51	2.10	208,000.00	99,047.62	16.55	1,488,350.00	89,930.51	32.33	3,049,350.00	94,319.52
2008	5.75	481,000.00	83,652.17	0.00	0.00	0.00	9.85	795,450.00	80,756.35	15.60	1,276,450.00	81,823.72
Totals	372.35	14,141,313.00	37,978.55	125.69	2,225,440.00	17,705.78	158.07	10,452,364.00	66,124.91	656.11	26,819,117.00	40,875.95

Intermunicipal Flows of Pine Barrens Credits as of 1/1/09				
Destinations	Originating from			Totals
	Brookhaven Town	Riverhead Town	Southampton Town	
Brookhaven Unincorporated (District 200)		0.15	8.00	8.15
Patchogue Village (204)	0.20			0.20
Huntington Unincorporated (400)		1.00		1.00
Islip Unincorporated (500)	2.50	2.10	6.50	11.10
Riverhead Unincorporated (District 600)				0.00
Smithtown Unincorporated (800)			0.10	0.10
Southampton Unincorporated (District 900)	0.46			0.46
Quogue Village (902)			0.26	0.26
Southampton Village (904)			7.84	7.84
Westhampton Beach Village (905)			5.85	5.85
Totals	3.16 (1.6% of all Brookhaven Credit redemptions)	3.25 (7.2% of all Riverhead Credit redemptions)	28.55 (35.5% of all Southampton Credit redemptions)	34.96 (10.9% of all redemptions)

See following pages for listing of individual redemptions.

Intertown Flows of Pine Barrens Credits as of 1/1/09				
Destinations	Originating from			Totals
	Brookhaven Town (District 200)	Riverhead Town (District 600)	Southampton Town (District 900)	
Brookhaven (District 200)		0.15	8.00	8.15
Huntington (District 400)		1.00		1.00
Islip (District 500)	2.50	2.10	6.50	11.10
Smithtown (District 800)			0.10	0.10
Southampton (District 900)	0.46			0.46
Totals	2.96 (1.5% of all Brookhaven Credit redemptions)	3.25 (7.2% of all Riverhead Credit redemptions)	14.60 (18.2% of all Southampton Credit redemptions)	20.81 (6.5% of all redemptions)

See following pages for listing of individual redemptions.

Pine Barrens Credit Appeals Statistics 1996 through 2008

	Brookhaven	Riverhead	Southampton	
Number of Appeals <i>(an appeal may affect several parcels)</i>	30	0	25	55
Total Affected Parcels	169	0	150	319
Decisions Granting Additional Credits <i>(varies from amount sought)</i>	10	0	11	21
Additional Credits Allocated <i>(above the original LOI allocation)</i>	46.77	0.00	26.28	73.05
Decisions Leaving LOI Allocation Intact	19	0	12	31
Appeals Withdrawn Without Decision	1	0	2	3
Appeals Pending	0	0	0	0

Compliance and Enforcement Report

CAE Overview

The four major duty areas of the Compliance and Enforcement (CAE) Division are:

- **Respond to, and investigate, land use and natural resource complaints and general field incident reports** received by the Commission. This is done in conjunction with other agencies having jurisdiction, and includes the reporting of findings and appropriate follow up work. In the case of verified violations of land use and natural resource laws, Notices of Violation may be issued as directed by the Commission.
- **Conduct compliance inspections of Commission permitted land use activities and development projects** to ensure that development does not exceed the scope of the permit conditions, and to do so in a timely fashion as projects are implemented. Compliance inspections are performed both before and after Commission permits are issued in order to assure full compliance with permit conditions.
- **Conduct regular compliance inspections and completion of field reports for all conservation easements** held by the Commission, in conjunction with the individual landowners and with cognizance of the individual conditions of each easement.
- **Coordinate Law Enforcement Council activities** with the Protected Lands Council, the Wildfire Task Force, and other public and private entities.



Compliance and Enforcement often serves as a clearinghouse for field reports from citizens. This remote dump site was removed within days after CAE staff contacted the appropriate public landowner.

In addition to these primary responsibility areas, the Commission's Compliance and Enforcement Division staff also is responsible for:

- **Regular outreach** efforts to state, county, and town land use enforcement agencies,
- **Coordination with emergency management and response agencies** as appropriate,
- **Investigative support** to the New York State Attorney General's Office, the Suffolk County District Attorney's Office, and other agencies on land use Plan violation referrals.
- **Coordination of CAE work with the Commission's Land Use and Pine Barrens Credit Divisions,** and

- **Working with the Land Use Division staff to inform contractor and development trade organizations** about the goals and objectives of the Act and the Plan, for the purpose of assuring compliance in advance and thereby preclude future violations.

Summary of 2008 CAE Work

The following figure summarizes the CAE efforts in 2008 by Development Project compliance visits, Conservation Easement Monitoring, and CAE Incident Reports. As part of the CAE start up, all previous incident reports have been retrieved, numbered, and are being tracked according to the Pine Barrens Incident Monitoring Protocol revised by the Commission during 2007.

In comparing 2007 to 2008 there were 29 reported incidents and in 2008 the office received 71. The increase in reported incidents is possibly due to the fact that the state, county, towns and the public are now aware that the Central Pine Barrens has a Compliance and Enforcement Coordinator.

One of the Division's 2008 goals for conservation easement monitoring in the Central Pine Barrens was to complete site visits of as many easement protected parcels as possible. Through the end of 2008, 649 site visits were completed, and a filing system which includes pertinent data information on each parcel was established.

In the past one and a half years since the establishment of the CAE Division, there have been several noteworthy accomplishments. Of utmost importance, the CAE staff continues to meet with the state, county and town representatives who have jurisdiction in the Central Pine Barrens. These meetings serve to publicize and answer questions regarding the new Compliance and Enforcement Division of the Commission, and to open lines of communication and cooperation among all land use and natural resource enforcement offices.

The CAE staff continues to work closely with, and support, the Law Enforcement Council, Protected Lands Council and the Wildfire Task Force.

Central Pine Barrens Incident Reports

A monthly report is filled out summarizing incoming calls to the Pine Barrens Commission office on potential violations that occur in the Central Pine Barrens. Last year, the Commission approved the revised Incident Report and accompanying protocol.

To implement the revised incident reporting and tracking system, the CAE staff provided in house



Incident reports capture diverse problems, as in this tire dumping along a Calverton roadway. Thanks to quick action from the Brookhaven Highway Department, this insult was cleaned up within a day.

training to all Commission personnel with a particular emphasis upon the administrative and land use personnel. These staff members are typically the first points of contact for incoming reports and callers, and the need for consistent and reliable Incident Report completions was emphasized.

The CAE staff works with the land use and administrative staff to review all prior land use complaints and violations in the Commission's files, and to assign Pine Barrens Central Complaint Numbers to every past and current report. Further, every report now has a tracking status assigned, indicating whether it is "**closed**" or "**open**".

Health and Safety Training

In June 2008, Health and Safety Training was provided as part of a orientation program for the Student Conservation Association volunteers within the Science and Stewardship Division. The Commission staff received in service training on health and safety issues.

Areas covered during the training:

- Emergency situations
- First Aid
- Safety use of tools and equipment
- Reporting an incident and completing an incident report

Vehicle Equipment

- Portable Desktop and Information Storage
- Telephone Directory - Policy Planning Staff
- Central Pine Barrens - Law Enforcement Agency Telephone Directory
- Central Pine Barrens Law Enforcement Handbook
- Emergency and Safety Information
- List of local areas hospital, address and phone numbers

DEVELOPMENT PROJECT COMPLIANCE SITE VISITS			
Reporting Period: 8/21/07 - 12/31/08			
Central Pine Barrens	Brookhaven (District 200)	Riverhead (District 600)	Southampton (District 900)
Core Preservation Area	9	1	2
Compatible Growth Area	16	-	-

CONSERVATION EASEMENT MONITORING SITE VISITS				
Reporting Period: 8/21/07 - 12/31/08				
Core Preservation Area	Brookhaven (District 200)	Riverhead (District 600)	Southampton (District 900)	Totals
Tax Map Sections				
Total	41	6	52	99
Done	37	5	48	90
Pending	4	1	4	9
Tax Map Parcels				
Total	322	22	327	671
Done	314	20	315	649
Pending	8	2	12	22

COMPLIANCE AND ENFORCEMENT INCIDENT REPORTS										
Reporting Period: All from 1/1/08 - 12/31/08 and Open (i.e., Pending) from 2007										
Year	Brookhaven (District 200)		Riverhead (District 600)		Southampton (District 900)		Other		Totals	
	2008 All	2007 Open	2008 All	2007 Open	2008 All	2007 Open	2008 All	2007 Open	2008 All	2007 Open
Core	24	2	2	0	17	0			43	2
CGA	22	0	1	3	3	0			26	3
Non-PB	0	0	0	0	0	0	2	0	2	0
Totals	46	2	3	3	20	0	2	0	71	5



Pine Barrens Law Enforcement Council

*Sgt. Arthur Pendzick,
Suffolk County Park Police, Chair
Lt. Dallas Bengel,
NYS EnCon Police, Vice Chair*



To: Central Pine Barrens Commission and Interested Parties
From: Sgt. Arthur Pendzick, SC Park Police
Subject: ***2008 Annual Law Enforcement Council Report***
Date: January 2009

Peter A. Scully
Chair

Lori Baldassare
Member

Philip J. Cardinale
Member

Linda A. Kabot
Member

Steve A. Levy
Member

The Pine Barrens Law Enforcement Council

The Pine Barrens Law Enforcement Council (PBLEC) celebrated its 15th Anniversary this year and was privileged to accept the Long Island Search and Rescue as its 26th member agency.

Thanks to the monthly meetings of the PBLEC, communication, information sharing and cooperation are achieved. Working together and independently within their various jurisdictions, the combined efforts of the individual agencies have the goal of protecting and safeguarding the Central Pine Barrens.



LEC members staff the Multi Agency ATV Field Details, such as this April 6th detail shown here at Southaven County Park.

Equipment and The Environmental Benefit Fund

No major purchases were made from the Fund in 2008. Equipment items of interest at the close of 2008 include:

- A grant application submitted in 2007 to the US Smokeless Tobacco Company for a Polaris Ranger all terrain vehicle (ATV) was unsuccessful due to the limited quantity of vehicles available, but the PBLEC was urged to resubmit the application in the future.
- 3 ATV batteries were purchased.
- 2 global positioning system units purchased in 2007 were programmed and put to use.
- A new enclosed trailer for ATV transportation is being considered.

P.O. Box 587
3525 Sunrise
Highway
2nd Floor
Great River, NY
11739-0587

Phone (631) 224-2604
Fax (631) 224-7653
www.pb.state.ny.us

- Brookhaven Town has promised to transfer to the PBLEC two confiscated ATVs after they clear their legal hurdles.

Legislation

A major part of PBLEC meetings this year was spent discussing possible ways to strengthen current ATV legislation to better aid the officer in the field with illegal ATV enforcement and act as a more effective deterrent.

After many proposals and ideas, the PBLEC agreed on some suggestions of amending portions of the Suffolk Code 469 Law, which deals with illegal ATVs. A specific recommendation will be forwarded to the Commission in 2009 for its consideration as a recommendation to the County Legislature.



Unlawful use of ATVs results in the impounding of the vehicles. This March 23rd field detail in Yaphank netted eight vehicles.

Field Projects: Training, Mitigation and Vehicle Removals

For the past two years, ATV training for officers of the PBLEC has been nonexistent, but the Suffolk County Sheriff's Office has sent two Sheriff's Deputies for training in order to become certified ATV instructors. They are currently setting up a training area at Gabreski Airport and will be training and certifying officers from various agencies within Suffolk County in the near future.

The PBLEC has also been actively involved with the Wildfire Task Force and the Protected Lands Council (PLC) of the Commission, and has been particularly active with the ATV Damage Mitigation Project of the PLC.



The LEC has supported the ATV Damage Mitigation Project in 2008, as on this November 5th work day repairing barriers in the Flanders area.

Members of the PBLEC have attended field sessions and participated in the ATV damage mitigation work days helping to complete Phase 2 of the program. This has established a 27 mile perimeter of access controls to deter illegal ATV use from its interior in the Flanders and Hampton Bays area. PBLEC enforcement agencies are also keeping an extra lookout in these areas.

The PBLEC has once again started up talks with the Army National Guard to remove a half dozen abandoned vehicles via airlift in the Central Pine Barrens. GPS coordinates have been taken and



Each field detail is unique, with the unexpected around each turn. This Manorville surface fire was discovered during the January 27th patrol. The Manorville Fire Department arrived promptly and extinguished it.

turned over to the Guard and we are just waiting for some good weather in the spring to remove these vehicles which will also serve as a training exercise for the Guard.

The PBLEC has also been involved with the U.S. Air Force Auxiliary Civil Air Patrol of Long Island. A Memorandum of Understanding (MOU) drafted in 2004 but never completed was revived and is in the final stages of being enacted.

This will enable PBLEC member agencies to utilize their resources for observation and support missions.

The PBLEC was involved this year with the SC Department of Social Services and other agencies on a committee to end homelessness in Suffolk County

within 10 years. Homelessness is an ever growing problem in the Pine Barrens. Several meetings have been attended and this is an ongoing project.

On July 29, a photo shoot took place at Southaven Park with participants from several agencies for a community outreach brochure being worked on regarding illegal activities in the Pine Barrens. We acknowledge and thank the Long Island Pine Barrens Society for their assistance with the photo shoot and the brochure.

The Public Education Committee jointly set up by the PBLEC and the Wildfire Task Force has not had any meetings this year and is currently lacking a chairperson, despite efforts to find one.

Special Topics and Speakers

In 2008 we had a record amount of speakers and interesting presentations given at our monthly meetings which were:

January 24- Melissa Griffiths (Pine Barrens Education and Outreach Coordinator) spoke about their initiatives and plans for the future.

February 28 - Lt. Col. Jack Ozer (Commander, U.S. Air Force Auxiliary Civil Air Patrol of Long Island) gave a presentation on the Civil Air Patrol.

March 27 - Ted Fisch (Regional Director NYS Emergency Management Office) SEMO gave a



Also found during the January 27th patrol, this rifle and pellet gun were seized and a suspect arrested.

presentation on the state's overall emergency planning process and the HAZNY analysis in particular.

April 24 - Bruce Johnson (International Code Council) spoke about the national Blue Ribbon Panel on Wildland Urban Interface Fire.

Sept. 25 - Susan Baird and Chris Padden (LI Search and Rescue) spoke about their Organization.

Richard Lupoletti (East Hampton Trails Preservation Society) spoke about problems, especially ATVs, that they are experiencing in East Hampton.

Eric Rehbein (Special Agent, US Coast Guard, also representing the Concerned Long Island Mountain Bikers) talked about mountain biking and also noted that the Coast Guard could get involved in the Pine Barrens regarding inland waterways.

Oct. 23 - Michael Sullivan (Board of Cooperative Educational Services, BOCES) discussed the law enforcement and criminal justice program offered at BOCES and their recruiting and internship needs.

Dec. 11 - Reggie Butt and Jim Gasowski (Nassau County Boy Scouts Resident Ranger at the Schiff Scout Reservation) gave a tour and presentation of Boy Scout Camp Wauwepex in Wading River, and hosted the LEC's monthly meeting.



Abandoned and often burned vehicles are occasionally found, such as this March 9th discovery in Coram.

Multi-Agency ATV Task Force and Enforcement



Dumping remains a constant challenge in secluded areas within the barrens, as illustrated by this May 17th discovery near the Warbler Woods area of Yaphank.

For the past 6 years, the PBLEC Multi-Agency ATV Task Force has been one of the Council's most successful ventures resulting in 866 illegal ATV impounds, 2,132 ATV related summonses and numerous other arrests and enforcement activities.

These details had to be suspended at mid year due to various circumstances, but they still produced 64 illegal ATV impounds and 169 ATV related summonses. The 2008 Multi-Agency ATV Task Force Annual Report gives a full accounting of all the details results.

During 2008, the enforcement agencies on the PBLEC have collectively compiled the following enforcement statistics within and around the Central

Pine Barrens region:

- 437 ATV complaints and/or incidents recorded
- 155 ATV impounds made
- 196 ATV related summonses issued
- 18 ATVs reported stolen
- 19 stolen ATVs recovered
- 2 reported ATV related injuries
- 97 illegal dumping arrests/summonses issued
- 163 summonses for Environmental Conservation Law violations issued (hunting, fishing etc.)
- 68 trespass arrests/summonses issued (many of these ATV related)
- 8 miscellaneous Penal Law misdemeanors handled
- 2 miscellaneous Penal Law felonies handled
- 3 stolen vehicles recovered
- 7 homelessness complaints handled



Field enforcement efforts also occur during the evening. This after dark ATV impound was part of the May 17th Yaphank operation.

The above figures reflect the collective work of the following agencies (these figures are incomplete as some agencies have not yet submitted their results):

- Brookhaven Town Public Safety
- New York State Environmental Conservation Police
- New York State Police
- Riverhead Town Police
- Southampton Town Police
- Suffolk County Park Police
- Suffolk County Police 5th Precinct COPE
- Suffolk County Sheriff's Office
- United States Fish and Wildlife Service



Preventive actions are also part of the LEC's work. Here, LEC agencies join with the Long Island Pine Barrens Society for a photo shoot in support of the public outreach effort of the ATV Damage Mitigation Project.

2008 Annual Pine Barrens Environmental Enforcement Officer Awards

The 3rd Annual 2008 Environmental Enforcement Officer of the Year Awards were presented to:

- Brookhaven Park Ranger Kevin Klokel
- Suffolk County Park Police Officer Gregory Link
- Suffolk County Deputy Sheriff John Noonan
- NYS Environmental Conservation Officer Ricky Wood
- NYS Forest Ranger Kevin M. Slade
- NYS Forest Ranger Michael Thompson

A special award from the PBLEC went to US Fish

and Wildlife Officer Thomas Loring for Overall Contribution to Environmental Enforcement.

The Southampton Town Police Community Response Unit (CRU) also received a Certificate of Appreciation from the PBLEC.

Also during the year, a special plaque was presented to Bruce Johnson, former Fire Marshal of Riverhead Town, and a Certificate of Appreciation given to Kathy Vrana, who retired from the Suffolk County Park Police Unit in 2008.

In Closing

Another successful year has occurred with PBLEC agencies working together to protect and safeguard our natural resources in the Central Pine Barrens. Much has been accomplished but there is still a lot to do and keep doing.

Special thanks go to the Commission Chairman Peter Scully and all of the Pine Barrens Commissioners and Designated Representatives, the Commission staff (especially Ray Corwin, Larry Hynes and Robin Mills) and all of the member agencies who make the Pine Barrens Law Enforcement Council a working reality.



The Pine Barrens Law Enforcement Council has made interagency cooperation and communication a priority since its inception in 1994. To quote an old but true aphorism:

“TEAM” : Together Everyone Achieves More”.

1-877-BARRENS

(Multi Agency Field Detail photos are courtesy of Sgt. Arthur Pendzick.

ATV Damage Mitigation November 5th photo is from Ray Corwin.

Photo above depicts start of May 18, 2008 Multi Agency ATV Detail at Southaven County Park.)

Science and Stewardship Report

During 2008, the Commission and the Science and Stewardship staff:

- **Began to hold regular division staff meetings with the Commission's Science and Stewardship Steering Committee**, and to conduct division planning.
- **Completed the contract with the Foundation for Ecological Research in the Northeast (FERN) for the development of ecological monitoring protocols** for Forest Health and for Freshwater Wetland Health and Biodiversity. Began considering possible long term ecological monitoring policies for the Commission.
- **Sponsored and organized an "Introduction to Wetland Identification and Delineation" workshop for public land managers** taught by Ralph Tiner in May. This session provided both classroom and field training for many of the public lands management agencies' environmental staff.
- **Continued the invasive plant field management project**, following up on the 2006 and 2007 inventory and assessment work. A Student Conservation Association (SCA) crew was utilized, in collaboration with most of the Central Pine Barrens protected land managers.
- **Continued participation in the NYS Invasive Species Management Program** and the regional Long Island Invasive Species Management Area (LIISMA).
- **Completed the Dwarf Pine Plains Trail Project, with the October dedication of the three new trailhead kiosk displays** at the Westhampton site. This project is a success due to the strong support of the Suffolk County Water Authority (which hosts the parking, displays, and trailhead), the New York State Department of Environmental Conservation (host to one half of the trail route), and the Suffolk County Department of Parks, Recreation and Conservation (host to the southerly half of the trail). Division responsibility for the Trail now shifts to maintenance, while the Education and Outreach Division will promote the use of the Trail in its programs.
- **Continued implementation of the All Terrain Vehicle (ATV) Damage Mitigation Project** in Flanders. Installed, monitored, and maintained barricades and signage, removed trash, conducted field work days, and started the design of a community outreach brochure. These efforts



An American chestnut sapling (Castanea dentata), destined to succumb to blight in the near future, reaches for the sunlight.

were undertaken with the assistance of numerous dedicated organizations and individuals, including the Law Enforcement Council. Special thanks go to the Long Island Pine Barrens Society for its assistance with the community outreach effort. A list of participants is included in the following pages.



It's September, but it looks like winter, when NYS DEC Forest Health Program staff worked to diagnose the cause of defoliation and mortality of oak trees in the barrens.

- **Completed the Fire Tower Project Feasibility Study Report** in December, which considered seventeen possible sites for the reconstruction of a fire observer tower, in keeping with the statute's mandate to restore cultural resources of the barrens. The report recommended the Quogue Wildlife Refuge as the future host site. The Commission accepted the report in December and directed the preparation of more detailed plans as a next step.
- **Began to build a field equipment cache** for the division.
- **Provided staff support for the Protected Lands Council's** meetings and projects. (E.g., the ATV Damage Mitigation Project originated from the Council.)
- **Produced the 2008 - 13th Annual - Pine Barrens Research Forum** in October, working with, and supporting, the Research Committee.
- **Worked with NYS DEC Forest Health Program Staff to evaluate mortality of oak trees** in the pine barrens.
- **Provided Geographic Information System (GIS) support** for the Commission, staff, and various committees (e.g., the Commission, the Clearinghouse) as necessary.



The bright red fruits of an occasional flowering dogwood (Cornus florida) add interest to acres of pine - oak forest.

- A significant work example of the latter is the December completion of a **preliminary analysis of all Suffolk County real property tax parcels in the Core Preservation Area** (approximately 8,500 parcels). One immediate application of this analysis will be the evaluation of both the current Pine Barrens Credit Program's remaining Core area Pine Barrens Credit generation potential, as well as the changes to the Credit Program proposed within Brookhaven Town under the pending Pine Barrens Plan amendments.

**Central Pine Barrens Commission Workshop
Introduction to Wetland Identification and Delineation**
May 8 and 9, 2008



Photograph by Ann Carter

Ralph Tiner is an adjunct professor at the University of Massachusetts where he teaches wetland classification/delineation. With over 30 years of experience in wetland mapping/delineation, he is a nationally recognized authority on these subjects. He helped develop the 1989 federal delineation manual. Among his many publications are several field guides to wetland plants and wetland identification/delineation.



Photographs by Ann Carter

Central Pine Barrens Commission Invasive Plant Management Program; Partnership with the Student Conservation Association (SCA)

Taralynn Reynolds, SCA Project Leader, and Kaley Simonis, Christopher Dexter, and Jordan Takvorian, SCA Native Plant Corp Members

Abstract*

Non-native invasive species alter the ecological balance of ecosystems. The effects of non-native invasive species, such as kudzu, black swallowwort, and mile-a-minute vine, are exacerbated in delicate ecosystems if left unmanaged. In order to preserve the integrity of the Pine Barrens against non-native invasive plants, research and fieldwork are needed to understand and participate in the control of these plants. For the 2008 Invasive Plant Management Program, the Central Pine Barrens Commission (Commission) partnered with the Student Conservation Association (SCA) to establish a team of volunteers to remove targeted non-native invasive species.



Kaley is feeling good during a mile-a-minute vine pull at Robinson's Duck Farm, Suffolk County



The SCA Native Plant Corps partners with various government and non-profit organizations to help land managers combat non-native invasive species. This project was initiated and funded by the Commission and involved projects implemented under the direction of seven land managers.

Taralynn demonstrates her efficiency with a chainsaw at Fox Lair, co-owned by Suffolk County Parks and the Town of Brookhaven

The SCA Project Leader assisted Commission staff in scheduling removal efforts to coincide with the phenology of the target plants and to provide sufficient time to complete the prescribed control work. The SCA team developed removal techniques for each species that involve the use of hand tools such as shovels, saws and pruners. Care was taken to properly dispose of the plants to minimize re-establishment.



Mark and Sarah are ready to help during the Peconic Estuary Program's **Ludwigia Pull**.

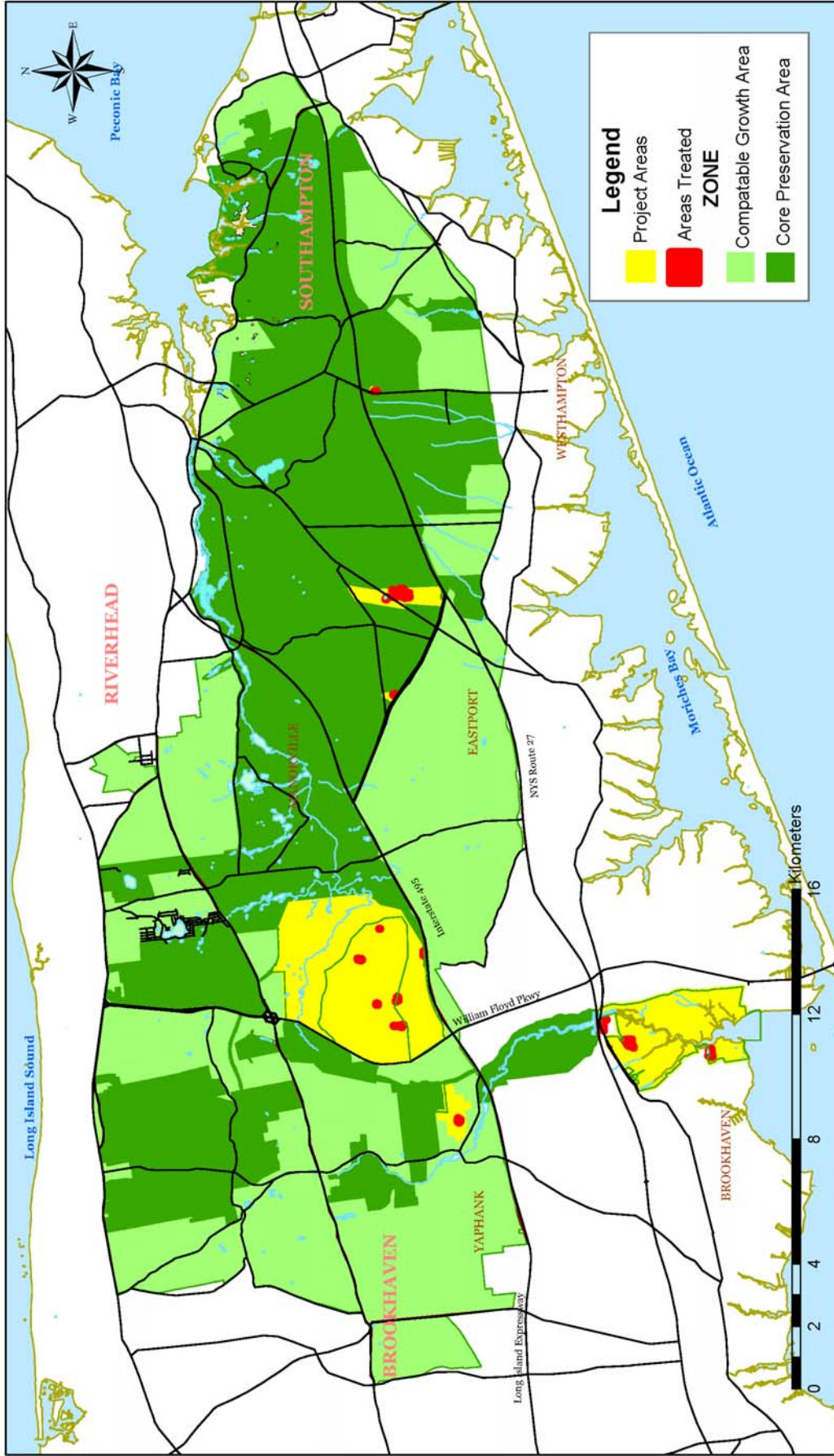


The location of each treatment was collected using a GPS unit attached to a pocket PC. All data was stored in a database. Non-native invasive plants were removed from ten sites that are under the jurisdiction of various public agencies. Benefits from the team's efforts are provided and recommendations for future management are proposed.

Chris observes the morphology of Japanese Barberry roots at Wertheim National Wildlife Refuge, US Fish and Wildlife Service.

*Abstract extracted from the final Invasive Plant Management Program report. A poster on this program was displayed at the Thirteenth Annual Pine Barrens Research Forum on October 2 & 3, 2008 at Brookhaven National Laboratory.

2008 Invasive Plant Management Treatment Areas



Note: This map is intended for general reference only and is not to be used for surveying, legal interpretation of jurisdictional boundaries, or other precise purposes. Information shown on this map may contain defects, errors and/or omissions. Refer to NYS ECL Article 57-0107 (10), (11), and (12) for the official description of the Central Pine Barrens Boundaries.

PLEASE JOIN US FOR THE...

DWARF PINE PLAINS TRAIL

~Kiosk Unveiling~

Friday

October 17, 2008

1:00 pm

Westhampton

SCWA

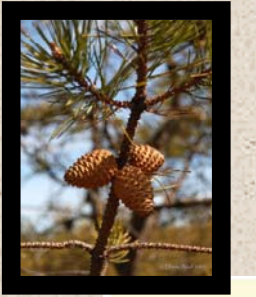
We are celebrating the installment of our trail head informational kiosks for the interpretive loop trail in the globally rare Dwarf Pine Plains of the Long Island Central Pine Barrens. Additional interpretive signage will be placed throughout the trail in the spring. This trail provides public access to this unique ecosystem. There will be a Buck Moth presentation by John Turner, followed by light refreshments.

Dress appropriately for the weather and bring your own tick protection.

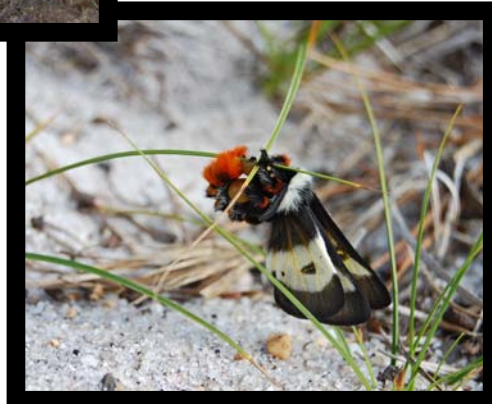
DIRECTIONS:

Take Sunrise Hwy to exit 63 south, the exit ramp enters Old Riverhead Road (County Road 31). Proceed south - you will see a large building on the left hand side of the road. Enter left turning lane and turn left into the SCWA driveway. Parking is available on site.

Please RSVP by October 10th, 2008
631-224-2604



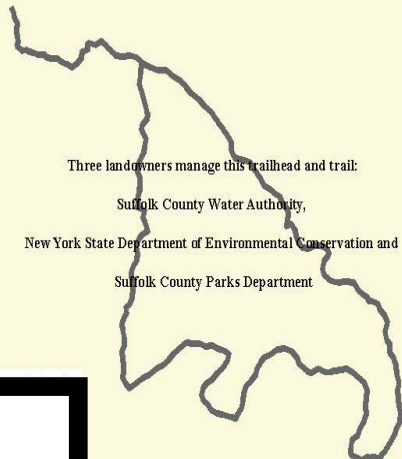
Eastern Kingbird



Dwarf Pine Plains Trail Map



Trail Starts Here



Three landowners manage this trailhead and trail:

Suffolk County Water Authority,

New York State Department of Environmental Conservation and

Suffolk County Parks Department

The Dwarf Pine Plains Trail is a 6/10 of a mile interpretive loop trail, as indicated by the international symbol shown here. The trail was not designed to be wheelchair accessible due to the sensitive environment.



*ATV & Dumping Damage Mitigation Project
Barricade Construction Work Day
November 5, 2008*



Photographs by Ray Corwin

*ATV & Dumping Damage Mitigation Project
Monitoring Orientation Field Session
November 7, 2008*



ATV Damage Mitigation Project Contributors
through December 31, 2008

Chuck Hamilton (*NYS DEC, PLC Co-Chair, and Project Committee Chair*)
John Pavacic (*Suffolk County Parks and PLC Co-Chair*)
Ann Carter (*Pine Barrens Commission, Project Coordinator*)
Richard Amper (*Long Island Pine Barrens Society*)
Mindy Block (*Quality Parks*)
Tim Byrnes (*NYS DEC Forest Rangers*)
Ron Carter (*Town of Southampton*)
Tom Casey (*Long Island Greenbelt Trail Conference*)
Ray Corwin (*Pine Barrens Commission*)
Thomas Dinger (*Long Island Power Authority*)
Kevin DiViglio (*Suffolk County Parks*)
Brian Dwyer (*Town of Southampton*)
Karen Eichelberger (*Pine Barrens Commission*)
Nick Gibbons (*Suffolk County Parks*)
Michael Giocondo (*Formerly with NYS DEC, Former Project Manager*)
Jennifer Garvey (*Long Island Pine Barrens Society*)
Paul Gorton (*Suffolk County Parks*)
Tim Green (*Brookhaven National Laboratory*)
Melissa Griffiths (*Pine Barrens Commission*)
Robin Griffin (*Suffolk County Parks*)
Mike LaBarbara (*Suffolk County Parks*)
Ed Houlihan (*Suffolk County Water Authority*)
Lawrence Hynes (*Pine Barrens Commission*)
Elizabeth Jackson (*Town of Southampton*)
Stephen Jones (*Suffolk County Water Authority*)
Ryan Kelly (*NY State Parks*)
Ken Kindler (*Long Island Trail Lovers Coalition*)
Darrel Kost (*NYS DOT*)
Tia Maria Laffita (*Suffolk County Parks*)
Kevin Matthaei (*NYS DOT*)
Jim Mesenbourg (*Brookhaven State Park*)
John Milazzo (*Pine Barrens Commission*)
Michelle Moravec (*Formerly with Suffolk County Parks*)
Karen Nicholson (*Suffolk County Parks*)
Larry Paul (*The Nature Conservancy*)
Joe Pokorny (*Suffolk County Water Authority*)
Ray Rancourt (*Suffolk County Parks*)
Arthur Pendzick (*Suffolk County Park Police*)
Derek Rogers (*Formerly with Suffolk County Parks, Former Project Manager*)
Kelly Roper (*Formerly with Suffolk County Parks*)
Joanne Schmitt (*Long Island Pine Barrens Society*)
Marty Shea (*Town of Southampton*)
Kevin Slade (*NYS DEC Forest Rangers*)
Steve Smith (*National Grid*)
John Turner (*Town of Brookhaven*)
Al Tuzzolo (*Town of Southampton*)
Yaroslav Tverdy (*Pine Barrens Commission*)
John Virgilio (*Individual Volunteer*)
Ray Widergren (*Suffolk County Parks*)
Central Pine Barrens Protected Lands Council
Central Pine Barrens Law Enforcement Council

An introduction to the
Fire Tower Project Feasibility Study
Central Pine Barrens Joint Planning and Policy Commission
Karen F. Eichelberger, Commission Staff

Fire towers once played an important role for public safety related to wildfires on Long Island. This study explored the feasibility of establishing a fire tower in the Central Pine Barrens area that replicates the historic fire towers that once served the Pine Barrens area for fire protection. The Long Island Pine Barrens Act (NYS ECL Article 57) and the Central Pine Barrens Comprehensive Land Use Plan supports the restoration and replication of historic structures.

The Fire Tower Project Feasibility Study Report describes the process by which potential project sites were identified and evaluated for suitability. In the report a suitable site is recommended and an overview of future work required is presented in a Draft Preliminary Project Plan.

Two Historic Fire Towers Once Present in the Central Pine Barrens Area



Camp Upton Tower
Photo Credit: Walter Teuber

Years Open: 1932 – 1953
Model: AerMotor LS-40, 60'



Flanders Hill Tower, 1946
Photo Credit: NYS DEC

Years Open: 1918-1959
Model: Aermotor LS-40, 47'

THE FIRE TOWER FEASIBILITY STUDY SELECTION CRITERIA APPLIED TO SITES SHOWN

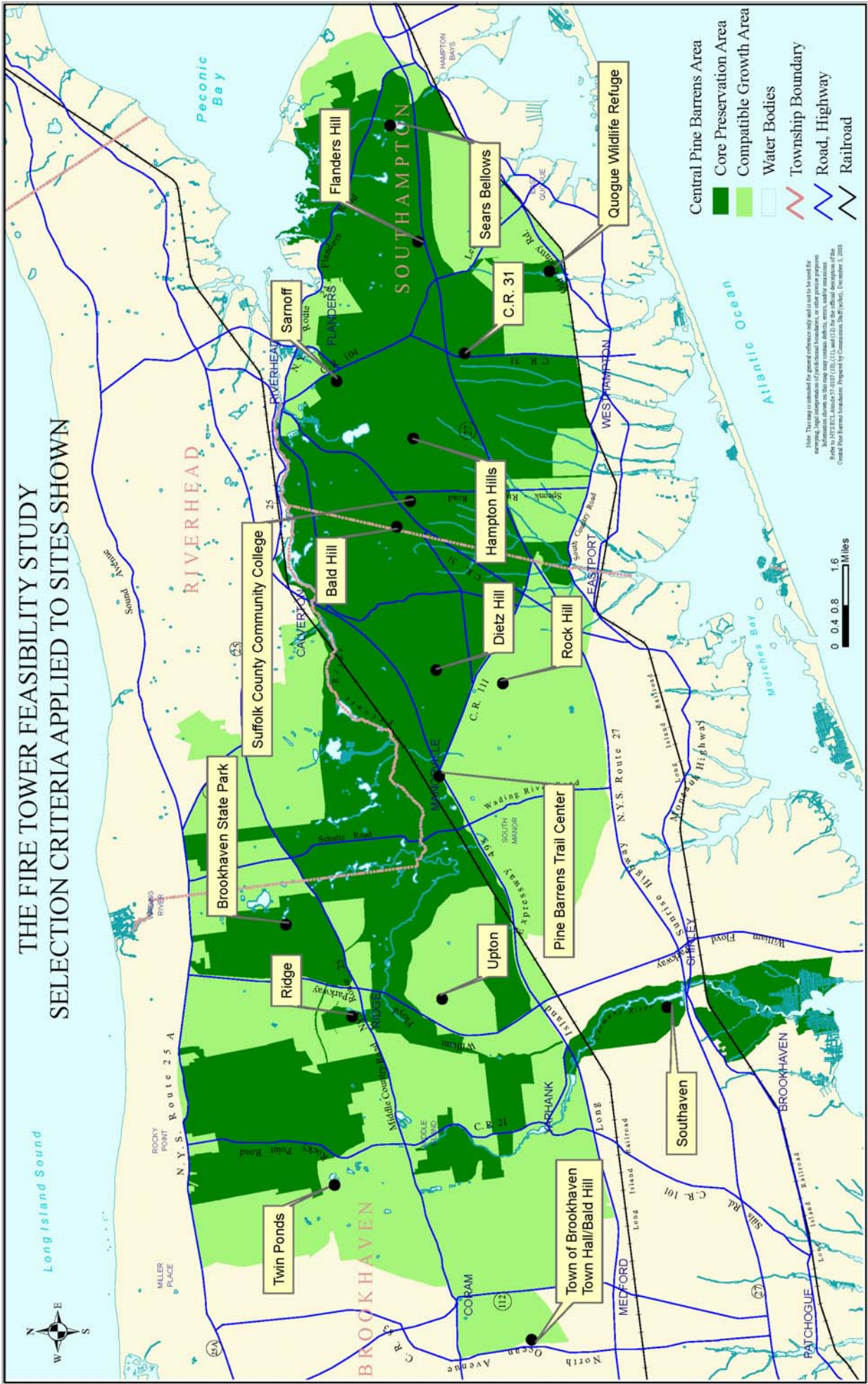


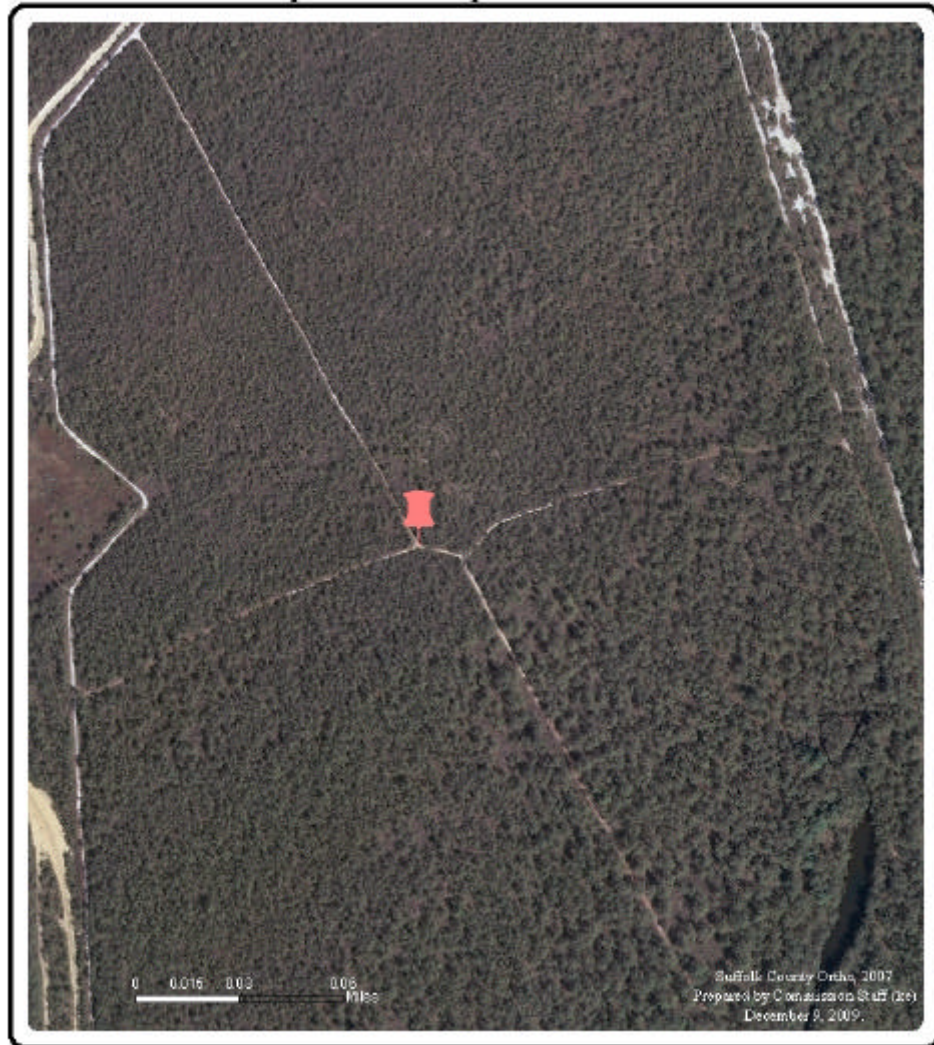
Figure 1

DRAFT PRELIMINARY PROJECT PLAN
Prepared by Karen Eichelberger, Commission Staff
December 15, 2008

Fire Tower Replication Proposed Project Description

The recommendation to the Commission is to implement a Fire Tower Replication Project by erecting a reconditioned or replica of an AerMotor, model LS-40, Fire Observation Tower at the selected location in Quogue Wildlife Refuge. Although many sites were considered, this location is preferred due to the unspoiled view, proximity to an operating nature center, and the pre-existing environmental and historical focus. An aerial photograph of the site at Quogue Wildlife Refuge is in Figure 1A.

Figure 1A: Site selected during the Fire Tower Feasibility Study
The site is located in the northern portion of the
Quogue Wildlife Refuge on a parcel owned by the
Southampton Township Waterfowl Association.



Protected Lands Council Report

**John Pavacic, Commissioner,
Suffolk County Department of Parks, Recreation and Conservation,
and Co-Chair, Protected Lands Council**

During 2008 the Protected Lands Council (PLC) continued to meet on a bimonthly basis with the exception of winter 2008. The PLC meetings continued to serve as an important forum for exchanges of ideas among various agencies and users groups as well as for the airing of issues and concerns of mutual interest such as trail maintenance, ATV enforcement and ecological management.

The PLC meetings also took on a greater role in providing educational seminars for the PLC members, which helped to strengthen and enhance their Pine Barrens management skills. This included a classroom and field review of invasive plant species control activities as well as the history, associated technology and current development of trails and trail maps.

In addition, the PLC also expended a considerable period of time in some serious soul-searching as it began to explore its future roles and responsibilities. The PLC was cognizant of the expanded roles being undertaken by Commission staff and the establishment over a period of years of a number of committees, working groups and related organizations, all having a role in Pine Barrens stewardship. This, coupled with the passage of a number of years since the PLC had last developed a significant work product, led the PLC to conclude it was time for inner reflection and a significant review of its duties, goals and objectives. Accordingly, this issue was made the main focus of its summer and early fall meetings in a series of round-table discussions and exchanges.



Brookhaven Laboratory has hosted many Protected Lands Council meetings over the years. Here, BNL staff conduct a field tour of invasive plant removal sites as part of the October 7th Protected lands Council meeting. The Laboratory was one of several public lands that benefitted from the 2008 invasive plant removal work.

Resulting comments and recommendations were received from the PLC members and were compiled, refined and forwarded to the Commission for its review. At this time it is our understanding that the Commission has created a **committee needs and structure study workgroup** to review all the various existing committees which fall under the umbrella of the Central Pine Barrens and that the review of the role, purpose and structure of the PLC is one of the main topics to be reviewed. The PLC eagerly awaits the findings and recommendations generated by this review, as well as the revision of Chapter 7 of the Land Use Plan. In the meantime, the PLC will continue to forge ahead with its current agenda during the new year

Environmental Education and Outreach Report

During 2008, the Environmental Education and Outreach Coordinator continued to support the Commission with its central mission and to provide educational opportunities on the Central Pine Barrens to citizens of Long Island. For 2008, we reached approximately 9,040 youth and adults through community outreach events, speaking engagements and school programs. Through hands on, interactive k-12 school programs, we reached a total of 1,810 classroom students. Through outreach events and speaking engagements we reached a total of 7,230 New York residents.



This Riverhead School District group visited the Dwarf Pine Plains in April for biodiversity studies.

The Education and Outreach Coordinator works cooperatively with staff and all Central Pine Barrens Commission divisions as well as on Councils, such as the Wildfire Task Force, the Protected Lands Council and the Law Enforcement Council.

The mission of the Education and Outreach Division is ...

“To promote awareness, appreciation and understanding to citizens of Long Island on the Pine Barrens ecosystem and the critical role it plays in maintaining a quality of life. This includes its species, landscapes, natural communities, ground water protection, and cultural and historical resources.”

Education and outreach projects of significance undertaken in 2008:

- **Plan, establish and build Pine Barrens Education Center:** Visits to approximately 11 nature and discovery centers were visited and a questionnaire for the facility manager and pictures for each site completed. We are compiling all information to include in a feasibility report to determine our needs for a Pine Barrens Discovery Center. This project is on-going.
- **Write, design, edit and distribute Pine Barren Education programs and curriculum resource materials:** This will include hands-on interactive programs for school and library visits. Four such interactive programs were developed during 2008:
 1. Pine Barrens Ecology,
 2. Barrens to Bay,
 3. Recycle, re-use, and reduce, and
 4. Long Island biodiversity

The staff is currently developing pre and post visit material and correlating programs to the NY State Learning Standards. They visited 10 school districts and reached 1, 810 students. We also reach approximately 7, 230 residents through outreach events and speaking engagements.

- **Organize and carry out an annual Pine Barrens Discovery Day starting in 2009:** A steering committee has been established and meetings taking place. Invitations to participants to lead a walk or presentation are currently being completed. A date of June 13th (and a rain date of June 14th) has been set for this event.
- **Create and maintain a Central Pine Barrens Speakers Directory:** The Pine Barrens Commission is now offering to the public a Central Pine Barrens Speakers Directory. Knowledgeable volunteers who have extensive experience speaking to K-12 students or older audiences are listed in this directory. These speakers will be invaluable in assisting the Commission in responding to Pine Barren program requests. Speakers are listed by topic of expertise; wildlife, plants, history, culture, archeology, recreation and science and ecology. The goal is to improve and expand citizens of Long Island's knowledge of the Central Pine Barrens.
- **Create an annual poster art contest:** The Central Pine Barrens Commission offered a *Protect our Pine Barrens* art contest. This contest was open to fifth grade classes in schools in the Core and Compatible Growth area of Long Island's Pine Barren regions. The contest encouraged students to utilize their artistic talents to express the importance of protecting Long Island's Pine Barrens, and our drinking water resources. The 2008 turn out was lower than initially expected, but this was the first year of implementation. The winners of the contest were acknowledged at Brookhaven National Laboratory's Open Space Stewardship Program annual student celebration in May.
- **Barrens to Bay Summer program:** During the summer months, the Central Pine Barrens Commission partnered with the Long Island Maritime Museum Summer program (in West Sayville, NY) to offer a six week summer program titled "Barrens to the Bay". In addition to the 6 weeks of camp for youth ages 6-12, we trained five educators/counselors on Pine Barrens ecology to provide a quality, fun, educational program. Three days of the five day program focused on Pine Barrens Ecology and Long Island ecosystem connections. Once a week, staff and participants traveled to two locations in the Pine Barrens; Wertheim National Wildlife Refuge and Southaven County Park for activities such as plant and animal adaptations, scavenger hunts, animal tracking, plant identification, seining, use of dip nets, studying connections among the Carmans



The October Riverhead Country Fair is a mainstay in the Commission's outreach effort, providing contact with thousands of visitors each fall.

River, the Pine Barrens and the Great South Bay, and soil and water sampling. During the month of September the LI Pine Barrens Society dedicated an entire half hour of its regular cable television program to highlight our day in the Pine Barrens. WLNY TV Channels 10 and 55 filmed a “Pine Barrens Exploring” segment which aired for the first time on August 12..

- **Improving Stewardship In Concert With our International "Twin" - Pisa, Italy Regional Parks – Twinning program:** The education division is strengthening the ongoing collaborations with Migliarino – San Rossore – Massaciuccoli (MSRM) Regional Park in the Tuscany Region (near Pisa), Italy- and introduced a education program to partner on. The program is a global biodiversity-mapping program for high school students in Italy’s MSRM region and the Long Island Pine Barrens region to compare, contrast and research each regions’ biodiversity. This will happen through research, GPS mapping, Google earth mapping software and frequent web-conferences between the students. Thanks to Brookhaven Science Associates funding, education staff attended a Park festival in May to meet local professors and park staff to introduce the global biodiversity-mapping program. This program will be implemented beginning in the spring of 2009.

Additional education and outreach activities in 2008 include:

- Pine Barrens Fire Tower project in conjunction with the Science and Stewardship Division
- Dwarf Pine Plain Trail interpretive kiosks unveiling
- Visits to New Jersey Pinelands and the Albany Pine Bush Preserve Commission to meet with their education and outreach staffs
- Participation in elementary, middle school, and high school career days
- Courtyard educational development in South Country and Sayville School Districts
- Speaking engagements at high school science conferences
- K-12 teacher training on Long Island biodiversity and Pine Barrens Ecology



The pine barrens provides a field laboratory in which students learn the value of detailed observations.

(Photos by Melissa Griffiths and Judy Jakobsen)

School programs



Longwood MS



Coram Elementary



Longwood HS

Riverhead HS



Islip HS

Pine Barrens Art Contest Winners



Prodel-MS - Shoreham



Southaven County Park

Warbler Woods



Barrens to Bay Summer Program

Wertheim Wildlife Refuge




Barrens to Bay




... a summer discovery program exploring Long Island's maritime history & ecology.

Summer Fun at the Long Island Maritime Museum

 Join us for an adventurous week exploring Long Island's maritime history and its coastal and upland Pine Barren ecosystems. Our educators will guide your child through interactive, hands-on learning experiences designed to be both educational and fun!

 Kids will discover the links between the island's maritime and natural histories. They will encounter some of the amazing creatures living in our local waters. A trip to the Pine Barrens will bring aspects of Long Island's unique natural history to life.

 Long Island and its barrier beaches are rife with tales of storms and shipwrecks, lifesavers and pirates. While exploring the Museum, they will come face-to-face with the characters and artifacts that are part of our rich maritime history.

 Additional activities will include: weekly on-water adventures, fun handling of marine animals in our touch tanks, participation in environmental activities and games, seining in the bay, discovering the Pine Barrens and making fun crafts.

The programs, which begin the week of 7 July and end on 15 August, Monday through Friday from 9:00 am to 3:00 pm, are for children entering the first through third grades and those entering grades four through six. All programs are on a first come, first served basis. Each weekly program is \$325.⁰⁰ per child, with LIMM members receiving a \$25.⁰⁰ per child, per week discount. Activities change on a weekly basis, so sign up for as many as you wish.

For further information, contact the Long Island Maritime Museum
at (631) HISTORY or on-line at
limm@limaritime.org.

*Program designed and supervised by
Melissa Griffiths, of the
Central Pine Barrens Commission,
based on her development of the
Cornell Cooperative Extension Service
summer program.*

*With the generous
support of ...*



The Central Pine Barrens Commission is happy to announce that is it now offering in-class education programs pertaining to Long Islands Pine Barrens.

The Commission's Education staff is available to visit your school. These programs are correlated to the NY State Learning Standards are approximately 45 minutes in length, and Depending on grade level, we provide a general overview of Long Island/Pine Barrens Biodiversity, Pine Barren Ecology, and the Central Pine Barrens Protection Act. This is an Opportunity to connect your students to their local environment!



Grades K-6 presentations are hands -on, multi- sensory and Grades 7-12 presentations are PowerPoint with a hands-on component, however the program can be adjusted to accommodate any age group or grade level.

For more information or to arrange a free program, please contact Melissa Griffiths, Education and Outreach Coordinator at 631-218-1177, or mgriffiths@pb.state.ny.us



Wildfire Task Force Report

**John Urevich, Southampton Town Fire Chiefs Council,
and Chair, Pine Barrens Wildfire Task Force**

Capt. Timothy Byrnes, New York State Forest Rangers, and Co Vice Chair

**Edward Schneyer, Suffolk County Department of Fire,
Rescue and Emergency Services, and Co Vice Chair**

The Wildfire Task Force

An important mission of the Pine Barrens Wildfire Task Force, created by the Pine Barrens Commission after the 1995 Long Island wildfires, is interagency information sharing with local fire departments and agencies on current wildfire planning and prevention efforts.

The Task Force has subcommittees on prescribed fire, fire protection assessment, fire weather, public education (joint committee with the Law Enforcement Council), arson investigation and documentation, training and equipment, and the Wildfire Incident and Management Academy. All of these have their genesis in the Task Force's 1999 Central Pine Barrens Fire Management Plan.



Smokey Bear provides a traditional roadside fire danger in several pine barrens locations.

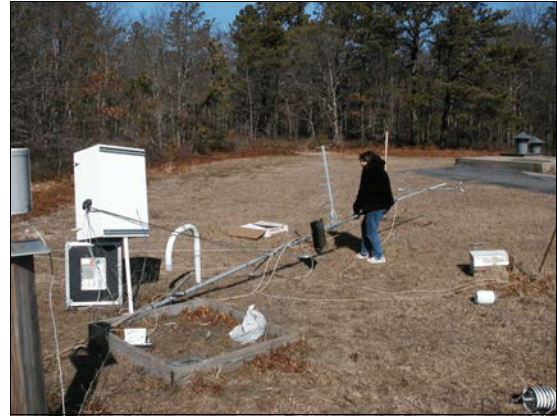
2008 Wildfire Issues & Topics

- At the March Task Force meeting, **NYS Forest Ranger Capt. Timothy Byrnes described the prescribed fire program which the Rangers oversee** on various State and County lands. The program's goals are the removal of hazardous brush and other vegetation buildup, referred to as fuels, and the enhancement of those ecological habitats which require burning for regeneration.
- Also in March, **Mr. Ted Fisch, the Long Island Regional Director for the NY State Office of Emergency Management presented the State's all hazards mitigation plan.** He supported the goal of helping the Central Pine Barrens staff and the various Commission committees create emergency management plans for both the Pine Barrens facilities and the Pine Barrens geographical area.
- The August meeting featured **a presentation by Mr. Bruce Johnson, Regional Manager of Fire Service Activities for the International Code Council (ICC), on the recently released National Blue Ribbon Panel on Wildland Urban Interface Fire.** He outlined the large and often overlooked risks in wildland urban interface areas, the substantial costs incurred from wildfires, the loss of life and property, and how the ICC's

suggested Wildland Urban Interface Code provides mitigating measures that can be implemented on the local level, if adopted into a State building code. Mr. Johnson also briefed the Commission on this topic in July.

Fire Weather and the Fire Danger Ratings

The fire weather awareness program continued through the 2008 fire season with **daily fire danger reports provided from the Central Pine Barrens Commission office to the Suffolk County Department of Fire, Rescue and Emergency Services (SC FRES)**. Salient points of the program include:



Maintaining the fire weather station during the off season is a crucial part of the Fire Danger Ratings program.

- SC FRES relays the daily fire danger rating to local fire departments.
- The rating is expressed as **Low, Moderate, High, Very High or Extreme**.
- This rating indicates the potential difficulty of containing a wildfire if an ignition occurs.
- It is used by local fire agencies for wildfire prevention and response planning.
- The fire danger rating is posted on three Smokey Bear signs in proximity to County parks and roads to promote public awareness.
- The 2008 spring season had six days of **High** danger and seven of **Very High** danger. The summer and fall fire season exhibited mainly **Low** and **Moderate** daily ratings.
- The annual fire weather station maintenance was performed in January.



The “wildland urban interface” is both a national and a Suffolk County, NY challenge.

Left, an aerial view of the western pine barrens and its interface area.

Right, the 2008 Research Forum featured a talk by Dr. Susan Stewart of the US Forest Service on both the national and Suffolk County “WUI” situation.

Central Pine Barrens Daily Fire Ratings for 2008

All ratings are based upon the National Fire Danger Rating System (NFDRS) 1978 Fuel Model "B" for brush fuels, except where "Grass" indicates that the NFDRS 1978 Fuel Model "L" was utilized during the spring.

Week	Sun	Mon	Tue	Wed	Thu	Fri	Sat
11/9 - 11/15		Low	Low	Low			
11/2 - 11/8		Low	Low	Low	Low	Low	
10/26 - 11/1		Low	Low	Low	Moderate	Moderate	
10/19 - 10/25		Moderate	Low	Low	Moderate	Low	
10/12 - 10/18			Low	Low	Low	Low	
10/5 - 10/11		Low	Low	Low	Low	Low	
9/28 - 10/4		Low	Low	Low	Low	Low	
9/21 - 9/27		Low	Low	Low	Low	Low	
9/14 - 9/20		Low	Low	Low	Low	Low	
9/7 - 9/13		Low	Low	Low	Low	Low	
8/31 - 9/6		Moderate	Moderate	Moderate	Moderate	Low	
8/24 - 8/30		Low	Low	Moderate	Moderate	Moderate	
8/17 - 8/23		Low	Low	Moderate	Moderate	Moderate	
8/10 - 8/16		Low	Low	Low	Low	Low	
8/3 - 8/9		Low	Low	Low	Low	Low	
7/27 - 8/2		Moderate	Moderate	Moderate	Low	Low	
7/20 - 7/26		Low	Low	Low	Low	Moderate	
7/13 - 7/19		Low	Moderate	Moderate	Moderate	Moderate	
7/6 - 7/12		Low	Low	Low	Moderate	Moderate	
6/29 - 7/5		Low	Low	Low	Low		
6/22 - 6/28		Low	Low	Moderate	Low	Low	
6/15 - 6/21		Low	Low	Low	Low	Moderate	
6/8 - 6/14	Moderate	Moderate	Moderate	Moderate	Moderate	Moderate	
6/1 - 6/7		Moderate	Moderate	Low	Low	Low	Low
5/25 - 5/31			Low	Moderate	Moderate	Moderate	
5/18 - 5/24		Low	Low	Low	Low	Low	
5/11 - 5/17		Low	Moderate	Moderate	Low	Low	
5/4 - 5/10		Moderate	High	High	Low	Low	

4/27 - 5/3		Low (Grass)	Low (Grass)	Low (Grass)	Low (Grass)	Low (Grass)	
4/20 - 4/26		High (Grass)	High (Grass)	Very High (Grass)	Very High (Grass)	Very High (Grass)	
4/13 - 4/19		High (Grass)	Very High (Grass)	Very High (Grass)	Very High (Grass)	Very High (Grass)	
4/6 - 4/12		Low (Grass)	High (Grass)	Low (Grass)	Low (Grass)	Low (Grass)	
3/30 - 4/5		Low (Grass)	Low (Grass)	Low (Grass)	Low (Grass)	Low (Grass)	

**2008 New York Wildfire & Incident Management Academy
Brookhaven National Laboratory – Upton, New York
Friday, October 24, 2008 – Sunday, November 2, 2008**

F A C T S H E E T

OVERVIEW:

Founded in 1998, The New York Wildfire and Incident Management Academy (NYWIMA) has five general objectives:

1. Train students to National Wildfire Coordinating Standards (NWCG) promoting fire management, tactics and firefighting safety;
2. Develop qualified trainers and instructors for Wildfire and Incident Management Courses;
3. Develop awareness of fire management and firefighting safety among firefighting organizations and public officials;
4. Encourage interagency cooperation, coordination, as well as the exchange of knowledge, information and technology from all levels of government, and;
5. Develop a group of interagency leaders to build upon the first four goals in the metropolitan New York and Northeast region.

PARTICIPATION:

	2008	2007	2006	2005	2004	2003	2002	2001	2000	1999	1998
Students:	429	470	482	402	546	612	563	436	535	215	102
Instructors:	33	37	43	46	45	37	42	36	29	24	12
Overhead:	48	64	30	53	48	45	60	61	29	25	22
Courses:	25	27	29	25	27	26	26	19	25	18	8

STATES, TERRITORIES, AND PROVINCES, REPRESENTED BY INSTRUCTORS, STAFF AND STUDENTS AT 2008 ACADEMY: (30)

Alaska, Alabama, Arizona, California, Colorado, Connecticut, District of Columbia, Delaware, Florida, Idaho, Indiana, Kansas, Kentucky, Maine, Maryland, Massachusetts, Michigan, New Brunswick, New Hampshire, New Jersey, Nevada, New York, North Carolina, Ohio, Pennsylvania, Rhode Island, South Carolina, Virginia, Vermont, Washington.

CONTACT INFORMATION:

Bill Fonda
Information Officer
(516) 808-2731 or (631) 444-0350

New York Wildfire & Incident Management Academy
New York State Department of Environmental Conservation
SUNY Building 40
50 Circle Road
Stony Brook, New York 11790-2356
FAX#: (631) 444-0272
Web Address: <http://www.dec.state.ny.us/website/reg1/acad.html>



For Release: Immediate
Tuesday, November 12, 2008

Contact: Bill Fonda
Information Officer
(631) 444-0350

Charles T. Hamilton
Academy Coordinator
(631) 444-0270
Fireacad@gw.dec.state.ny.us

New York Wildfire & Incident Management Academy Concludes 10-day Run at Brookhaven National Lab
25 Courses Offered During Academy's 11th Year

UPTON, NY - The New York Wildfire and Incident Management Academy (NYWIMA), which ran from October 24, 2008 through November 2, 2008 at Brookhaven National Laboratory (BNL) and at Suffolk County's Fire Rescue and Emergency Services offices in Yaphank recently concluded its eleventh year of operations and has now provided training to over 4,900 firefighters and emergency response personnel over its existence.

The Academy's goal is to provide for a safe learning environment for wildland firefighters and all-risk incident managers and to foster greater networking opportunities and partnerships between participants from federal, state, and local agencies.

To aid in achieving this objective, the NYWIMA is managed to mirror an actual incident utilizing the Incident Management System (ICS) under the direction of an Incident Management Team (IMT). The IMT reflects the interagency and cooperative nature of today's incident management philosophy with team members coming from federal, state, and local agencies.

In total, 510 personnel participated in the 2008 Academy. Participation included 48 overhead staff members, and 33 instructors from federal, state and local agencies. In total, 429 students representing 30 states and one Canadian province participated in the 2008 Academy.

This year the Academy offered 25 courses in a wide variety of areas resulting in the Red Card certification of wildland firefighters and the re-certification of firefighters. Additional training certification was completed in the following classes: Crew Boss, Engine Boss, Advanced Wildland Firefighter and a Portable Pumps class.

The Academy once again ran a five-day incident management team workshop. The workshop addresses the need for students (incident managers) to be able to apply the knowledge they gained from classroom exercises to real-life situations. To do this the Academy developed a unique program that is designed to replicate an incident which would utilize the incident command system in order to manage first responders efforts. This program debuted at the Academy in 2007.

- More-

“The Incident Management Team Workshop was designed to give emergency response managers practical experience in handling large-scale emergency response efforts,” Academy Coordinator Charles T. Hamilton said. “This program involved two full-day scenarios where building team cohesion, proper management principles and overall effectiveness was evaluated by some of the nation’s top emergency response managers. The one-on-one coaching trainees in the workshop received from some of the nation’s top incident managers will help workshop members develop skills in key foundation positions under the Incident Command System (ICS) organization.”

The New York State Department of Environmental Conservation (DEC) conducted the Academy with a consortium of federal, state and county agencies including: **(Federal)** Brookhaven National Laboratory, Bureau of Land Management, National Park Service, United States Coast Guard, United States Forest Service, United States Fish and Wildlife Service **(State)** Central Pine Barrens Commission, Central Pine Barrens Wildfire Task Force, Massachusetts Department of Environmental Management, New York State Emergency Management Office, New York State Office of Fire Prevention and Control **(City, County and Other Organizations)** Fire Department of New York (FDNY) Suffolk County Department of Fire, Rescue, and Emergency Services, Suffolk County Department of Parks, Recreation, and Conservation, the Colorado Wildfire Academy.

The Academy was developed in response to the 1995 Long Island Pine Barrens wildland fires as well as to the increased overall frequency of wildland fires on Long Island. All courses were taught by certified wildland fire and incident command instructors, and meet all National Wildfire Coordination Group (NWCG) standards.

"The courses were extremely successful and the New York Academy contributed to expanding the pool of certified resources that will be available for the 2009 wildland fire season, and to respond to other types of emergency incidents locally and nationally," Academy Coordinator Charles T. Hamilton said.

For further information regarding the Academy, please contact Charles Hamilton at (631) 444-0270, or visit the Academy's website: <http://www.dec.ny.gov/education/73.html>.

###

Board of Directors of the New York Wildfire and Incident Management Academy:

John Urevich, Pine Barrens Wildfire Task Force Chair
Capt. Timothy Byrnes, Wildfire Task Force Co Vice Chair
Edward Schneyer, Wildfire Task Force Co Vice Chair
Charles Hamilton, Academy Coordinator
John Searing, Commission Appointee

Research & Park Twinings Report

**Dr. Henry Bokuniewicz, Stony Brook University,
Long Island Groundwater Research Institute**

**Dr. Timothy Green, Brookhaven National Laboratory and
Foundation for Ecological Research in the Northeast**

Annual Research Forum

Planning was very successful with outreach to other Pine Barrens areas. Speakers from the Albany Pine Bush and New Jersey Pinelands were present. The theme “Current Challenges and Future Solutions” was represented by a broad spectrum of talks.

Talks covered issues involving protection of groundwater and surface waters, effects of pesticides on amphibians, global climate change effects on Long Island, results of Forest Health monitoring, a historic perspective on vegetation changes on the Montauk peninsula, and many others. The key note speaker was Dr. Rick Relyea from the University of Pittsburgh discussing toxicological effects of common herbicides and pesticides on various species. Attendance was around 120 individuals throughout the day.

Scientific work in 2008 included:

- Start of evaluation of invertebrate distributions in the Carmans River based on physical and chemical variations in sediment and water.
- Evaluation of bird survey data.
- Documenting the distribution of banded sunfish and swamp darters to gather information to write the recovery plan for these two species.
- Completion of field research on the tiger salamander which will likely be used to develop recovery and management plans.
- Continuation of work looking at soil microbial communities.
- Community analysis of Pine Barrens forests using forest health data.
- Additional work was done on potential for disease transmission in eastern box turtles.



*University of Pittsburgh
Professor Rick Relyea
delivered a thought provoking
keynote on his team's findings
on ecotoxicology at the
October Pine Barrens
Research Forum.*

- Continued studying the possible reasons for the disappearance of the southern leopard frog from Long Island.
- Continued gathering baseline water quality data for wetlands across the Pine Barrens, including data on temporal variations
- Assessing the invasivity of numerous plant species which will continue in 2009.

Looking into future needs:

- Freshwater Wetland Protocols for the assessment of the current health of the Pine Barrens wetlands were completed in 2008. The next step in the process is implementation. This will be somewhat of a challenge as a funding source to cover the cost for the three plus year project must be identified.
- Further evaluation of the Pine Barrens forest model using forest health data, effects of fires both prescribed and wildland.
- Concerns about forest pathogens are growing. Are we doing enough for early detection and action to prevent catastrophic loss?
- What risks are we taking on/or already have within the wildland-urban interface due to continued development?
- Do Long Island and the Pine Barrens need to look at alternative wastewater treatment systems to protect our groundwater?
- What are the current and legacy effects of pesticide and nutrients on aquatic systems? Are these stressors adding more stress to an already stressed system?

Twinnings

Twinnings efforts between the Central Pine Barrens and the Migliarino-SanRossore-Massaciuccoli (MSRM) Park in Pisa, Italy flourished through a generous donation from the Brookhaven Science Associates. This allowed Central Pine Barrens cooperators to be represented at MSRMs Annual Festival in May 2008 and to present opportunities for educational collaboration, the work of not-for-profits in Pine Barrens stewardship and the Open Space Stewardship Program, and discussions concerning coastal erosion.

Twinning efforts in 2009 will emphasize the development of a joint project between the Central Pine Barrens and MSRM on commonalities and differences in biodiversity between the two areas. The Brookhaven Science Associates have once again very generously provided support for the effort. A big “thank you !” goes out to their Board of Directors.

Thirteenth Annual Pine Barrens Research Forum

“Current Challenges and Future Solutions”

Agenda

Thursday, October 2, 2008 – Seminars

8:00 AM Registration & Coffee

8:30 AM Welcome

Dr. Sam Aronson, Director of BNL;
 Maria Dikeakos, US DOE, Brookhaven Area
 Office;
 Peter A. Scully, Chair, Central Pine
 Barrens Commission and Regional Director,
 NYS DEC

8:45 AM Making research count,

Tim Green, FERN

9:00 AM Growth and change in the

wildland - urban interface,

Susan Stewart, U.S. Forest Service

9:30 AM NJ Pinelands Alternate Design

Wastewater Treatment Systems

Pilot Program, Edward Wengrowski,
 New Jersey Pinelands Commission

10:00 AM Linking groundwater, pesticide

occurrence and submerged aquatic

vegetation, Kim Paulsen, Suffolk County
 Department of Health Services

10:30 AM Break & Poster Session

11:00 AM Baseline floristic assessment

and classification of pine barrens

vernal pools in New York,

Jason Bried, Albany Pine Bush Preserve
 Commission

11:30 AM Are highly urbanized pine

barrens important for conserving

shrubland birds? Neil Gifford,

Albany Pine Bush Preserve Commission

Agenda

Friday, October 3, 2008 – Field Trip *

8:30 AM until noon

BNL Groundwater Treatment Systems

An overview and visit to representative field
 systems at BNL

This field trip will provide an overview of the
 groundwater cleanup program at Brookhaven
 National Laboratory. Participants will hear
 about BNL's efforts to remediate various
 plumes. Several representative operations will
 be visited.

* If attending the field trip, please wear
 appropriate clothing and tick protection.



Pontederia cordata
 Pickerelweed

12:00 PM Climate change research and
 information needs in New York State,

Peter Iwanowicz, Office of Climate Change, NYS DEC

12:30 PM Lunch Break

Lunch can be purchased at the onsite cafeteria

1:15 PM KEYNOTE : Taking a community

level approach to ecotoxicology: Insights

from aquatic ecosystems, Rick Relyea,

University of Pittsburgh

2:00 PM Assessing the invasiveness of non-

native plants on Long Island,

Gerry Moore, Brooklyn Botanic Garden

2:30 PM Native alternatives to invasive plants,

Steven Clemants, Brooklyn Botanic Garden

3:00 PM Break & Poster Session

3:15 PM Thirty years of community

development in a gamma irradiated pine-

oak forest in Brookhaven National

Laboratory, Richard Stalter, St. John's University

3:45 PM The occupation & disoccupation

of the Montauk Peninsula by waves of

succeeding plant communities following the

retreat of the last ice sheet: What will

global warming and tomorrow bring?

Larry Penny, Town of East Hampton

4:15 PM Pine Barrens forest community,

Richard Wilkens, Dowling College

4:45 PM Closing Remarks: Formulating a

research agenda, Tim Green, FERN

The Pine Barrens Commission – Organization and Resources

Office & Administration
<p>P.O. Box 587 3525 Sunrise Highway, 2nd Floor (Suffolk County Water Authority Technical Services Building) Great River, NY 11739-0587 Voice: 631-224-2604 Fax: 631-224-7653 Hours: Mon - Fri, 8:30 am to 5:00 pm Pine Barrens Reference Library open to public (non lending!) Web: www.pb.state.ny.us E-mail: info@pb.state.ny.us</p>



Divisions & Principal Staff Contacts	
Administration	Ray Corwin Robin Mills Carol Sholl
Land Use & Development	Julie Hargrave
Pine Barrens Credit Program	Judy Jakobsen Carol Sholl Yaroslav Tverdy (intern)
Science & Stewardship	Ann Carter Karen Eichelberger
Compliance & Enforcement	Lawrence Hynes
Education & Outreach	Melissa Griffiths
Legal	John Milazzo

The Commission’s organization includes the interagency Councils that “make things happen” in the field.

Here, members of the Protected Lands Council representing NYS DEC, Suffolk County Parks, and other entities conduct a morning briefing before field work on the ATV Damage Mitigation Project in the Southampton area.

Central Pine Barrens References & Leads



Our two basic guiding documents:

- The Law: “The (NY State) Long Island Pine Barrens Protection Act of 1993”, codified in “New York Environmental Conservation Law Article 57”. Passed in July of 1993. Subsequently amended several times, as recently as 2006.
- The Regional Plan: Central Pine Barrens Comprehensive Land Use Plan, June 1995. Produced during a strict two year planning period, starting with the July 1993 legislation. (A “sunset provision” would have abolished the Commission and Act if this deadline was not met.) Amended three times. A fourth, comprehensive amendment is in progress (and *will* happen !).

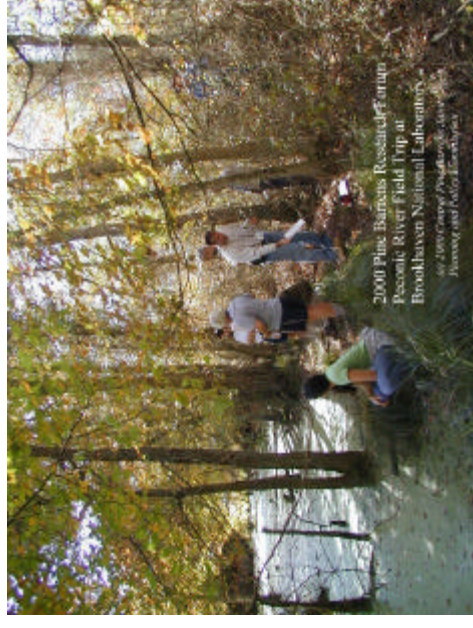


Our basic info repository:

The Commission web site at:

www.pb.state.ny.us

The Act and the Plan are both available there, along with a (metric) ton – give or take – of other material.





*Hiking the Dwarf Pine Plains Interpretive Trail,
October 17, 2008.*

Photo by Ray Corwin.

www.pb.state.ny.us