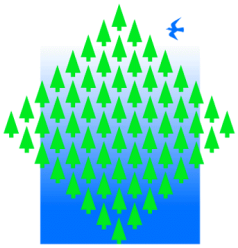


Central Pine Barrens Commission
2007 Report of Activities



**CENTRAL
PINE
BARRENS**
JOINT
PLANNING
&
POLICY
COMMISSION

Peter A. Scully
Chair

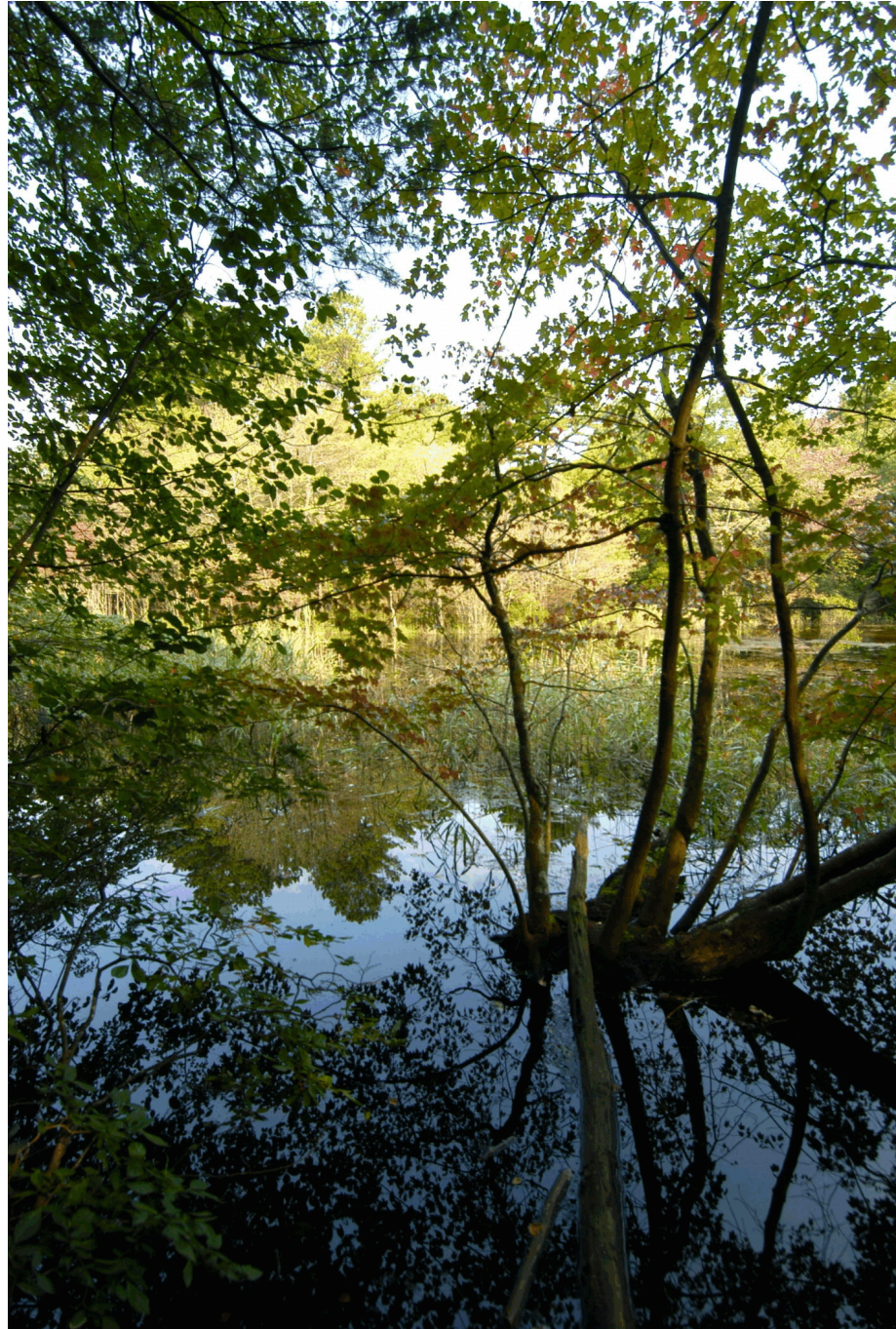
Philip J. Cardinale
Member

Brian X. Foley
Member

Patrick A. Heaney
Member

Steve A. Levy
Member

P.O. Box 587
3525 Sunrise
Highway
2nd Floor
Great River, NY
11739-0587



Phone (631) 224-2604
Fax (631) 224-7653
www.pb.state.ny.us

Central Pine Barrens Joint Planning and Policy Commission

Peter A. Scully, Commission Chair, Governor's Appointee,
and Regional Director, NYS Dept. of Environmental Conservation

Philip J. Cardinale, Member and Riverhead Town Supervisor
*(Designated Representatives:
George Bartunek, Richard Hanley)*

Brian X. Foley, Member and Brookhaven Town Supervisor
*(Designated Representatives:
Brenda Prusinowski, John Turner)*

Patrick A. Heaney, Member and Southampton Town Supervisor
*(Designated Representatives:
Jeff Murphree, Martin Shea)*

Steve A. Levy, Member and Suffolk County Executive
*(Designated Representatives:
Carrie Meek Gallagher, Thomas Isles)*

Staff

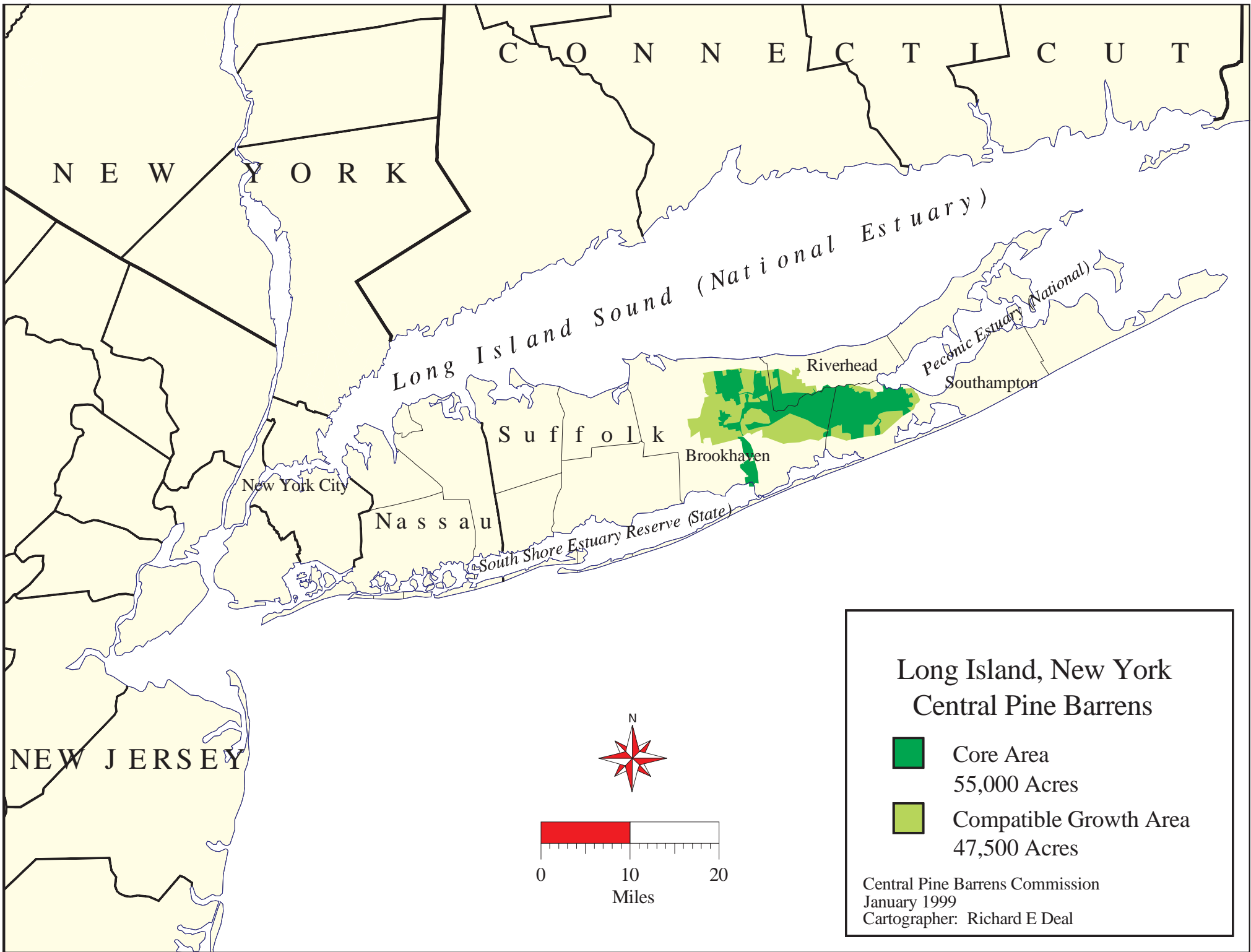
(from the Suffolk County Water Authority)

Ann Carter
Raymond Corwin
Karen Eichelberger
Melissa Griffiths
Julie Hargrave
Lawrence Hynes
Judith Jakobsen
John Milazzo
Robin Mills
Carol Sholl

Office & Contact Information

P.O. Box 587
3525 Sunrise Highway, 2nd Floor
Great River, NY 11739-0587
Voice: 631-224-2604 Fax: 631-224-7653
www.pb.state.ny.us
info@pb.state.ny.us

*Cover: The Carmans River as it flows south (to the right) through
Cathedral Pines County Park, Middle Island. Cover and all other photos
by Ray Corwin unless otherwise noted.*



Pine Barrens Commission Development Project Decisions 1993 through 2007

Year	Core Preservation Area			Compatible Growth Area			Central Pine Barrens		
	Approvals	Disapprovals	Decisions	Approvals	Disapprovals	Decisions	Approvals	Disapprovals	Decisions
1993	0	0	0	0	0	0	0	0	0
1994	6	2	8	6	1	7	12	3	15
1995	7	4	11	12	2	14	19	6	25
1996	7	1	8	9	0	9	16	1	17
1997	8	1	9	0	0	0	8	1	9
1998	3	1	4	3	0	3	6	1	7
1999	3	2	5	3	0	3	6	2	8
2000	1	1	2	0	0	0	1	1	2
2001	7	1	8	1	0	1	8	1	9
2002	4	2	6	0	1	1	4	3	7
2003	2	1	3	2	0	2	4	1	5
2004	1	0	1	4	0	4	5	0	5
2005	3	0	3	6	2	8	9	2	11
2006	1	0	1	4	0	4	5	0	5
2007	0	0	0	3	1	4	3	1	4
Total	53	16	69	53	7	60	106	23	129

**Pine Barrens Commission
Development Applications Summary Chart - 1993 through 2007**

Type	Brookhaven Town	Riverhead Town	Southampton Town			Totals
			Unincorporated	Quogue Village	Westhampton Beach Village	
Core Preservation Area						
Core Hardship	30 Approved <i>(1 annulled by court)</i> 10 Denied 12 Withdrawn 5 Nondev't	4 Approved 1 Denied 2 Withdrawn	16 Approved <i>(1 rescinded by Commission)</i> 5 Denied 14 Withdrawn 1 Pending	0	0	50 Approved <i>(1 annulled by court; 1 rescinded by Commission)</i> 16 Denied 28 Withdrawn 5 Nondev't 1 Pending
Compelling Public Need	1 Approved (partly in Riverhead)	0	2 Approved	0	0	3 Approved
Assertions of Jurisdiction	0	1 Rescinded	0	0	0	1 Rescinded
Core Totals	31 Approved <i>(1 annulled by court)</i> 10 Denied 12 Withdrawn 5 Nondev't	4 Approved 1 Denied 2 Withdrawn	18 Approved <i>(1 rescinded by Commission)</i> 5 Denied 14 Withdrawn 1 Pending	0	0	53 Approved <i>(1 annulled by court; 1 rescinded by Commission)</i> 16 Denied 28 Withdrawn 5 Nondev't 1 Assertion rescinded 1 Pending 104 Total
Compatible Growth Area (CGA)						
CGA Hardships	21 Approved 2 Denied 3 Withdrawn 2 Nondev't 1 Pending	1 Approved 1 Denied	1 Withdrawn	0	0	22 Approved 3 Denied 4 Withdrawn 2 Nondev't 1 Pending
Assertions of jurisdictions	1 Approved <i>(1 annulled by court)</i> 1 Denied 1 Withdrawn 1 Rescinded	1 Withdrawn 1 Pending	0	0	0	1 Approved <i>(1 annulled by court)</i> 1 Denied 2 Withdrawn 1 Rescinded 1 Pending
Projects in a Critical Resource Area (CRA)	0	(No CRAs)	3 Approved	(No CRAs)	(No CRAs)	3 Approved
Developments of Regional Significance (DRS)	1 Approved 1 Withdrawn 1 Pending	0	1 Approved	0	0	2 Approved 1 Withdrawn 1 Pending
Projects under Interim Goals and Standards (IGS) (No longer applicable.)	20 Approved 3 Denied 2 Withdrawn 3 Nondev't	1 Approved	1 Approved	3 Approved 1 Nondev't	0	25 Approved 3 Denied 2 Withdrawn 4 Nondev't
CGA Totals	43 Approved <i>(1 annulled by court)</i> 6 Denied 7 Withdrawn 5 Nondev't 1 Assertion rescinded 2 Pending	2 Approved 1 Denied 1 Withdrawn 1 Pending	5 Approved 1 Withdrawn	3 Approved 1 Nondev't	0	53 Approved <i>(1 annulled by court)</i> 7 Denied 9 Withdrawn 6 Nondev't 1 Assertion rescinded 3 Pending 79 Total
Total Core + CGA Projects: 183						

Easement Protected Lands and Pine Barrens Credits as of January 1, 2008



(Right: Robert Cushman Murphy County Park, Ridge)

	Brookhaven	Riverhead	Southampton	Total
Parcels	321	21	315	657
Acreage total	705.765	110.508	529.054	1345.33
Average parcel	2.20 ac	5.26 ac	1.68 ac	2.05 ac
Credits generated	455.26	68.43	248.51	772.20
Credits redeemed	188.41	45.44	61.714	295.564
Credits not redeemed	266.85	22.99	186.796	476.636
Total value of Credit sales	\$13,660,313	\$2,225,440	\$9,278,764	\$25,164,517

PINE BARRENS CREDIT CLEARINGHOUSE

James T.B. Tripp, Esq., *Chairman*

Andrew P. Freleng, AICP, *Vice Chairman*

Robert Anrig, *Member*

Richard W. Hanley, *Member*

Mitchell H. Pally, Esq., *Member*

Changes in Easement Protected Lands and Pine Barrens Credits from 1/1/07 to 1/1/08								
	Brookhaven		Riverhead		Southampton		Total	
	1/1/08	Change from 1/1/07	1/1/08	Change from 1/1/07	1/1/08	Change from 1/1/07	1/1/08	Change from 1/1/07
Parcels	321	6	21	7	315	12	657	25
Acreage	705.765	0.995	110.508	1.088	529.054	7.024	1345.33	9.11
Average Parcel Size	2.20	- 0.04	5.26	- 2.56	1.68	- 0.04	2.05	- 0.06
Credits Generated	455.26	0.60	68.43	1.60	248.51	2.02	772.20	4.22
Credits Redeemed	188.41	7.76	45.44	0.25	61.714	9.61	295.564	17.62
Credits Not Redeemed	266.85	- 7.16	22.99	1.35	186.796	- 7.59	476.636	- 13.40
Average PBC Sale for Prior 12 Months	\$98,903.51	- \$11,763.16	\$99,047.62	+ \$29,047.62	\$93,082.19	+ \$23,249.49	\$96,351.54	+ \$21,479.01
PBC Sales Volume	\$13,660,313	\$1,353,000	\$2,225,440	\$208,000	\$9,278,764	\$1,382,650	\$25,164,517	\$2,943,650

P.O. BOX 587, 3525 SUNRISE HIGHWAY, 2ND FLOOR, GREAT RIVER, NEW YORK 11739-0587

631-224-2604 / FAX 631-224-7653

<http://www.pb.state.ny.us>

***“By the way, just what
are those Credits
selling for these days ?”***

*Pine Barrens Credits,
which protect resources
such as these, now have
a “decade plus” track
record of market values
and sales, so we can
answer this question with
historical data!*



Pine Barrens Credit Sales 1996 through 2007												
	Brookhaven Town			Riverhead Town			Southampton Town			Totals		
Year	# PBCs	Sales Value	Avg PBC Value	# PBCs	Sales Value	Avg PBC Value	# PBCs	Sales Value	Avg PBC Value	# PBCs	Sales Value	Avg PBC Value
1996	1.00	7,500.00	7,500.00	0.00	0.00	0.00	0.00	0.00	0.00	1.00	7,500.00	7,500.00
1997	31.18	383,140.00	12,288.01	56.17	561,700.00	10,000.00	4.52	48,814.00	10,799.56	91.87	993,654.00	10,815.87
1998	67.88	1,016,760.00	14,978.79	0.10	500.00	5,000.00	5.84	57,500.00	9,845.89	73.82	1,074,760.00	14,559.20
1999	54.95	1,445,902.00	26,313.05	18.19	245,600.00	13,501.92	0.72	8,050.00	11,180.56	73.86	1,699,552.00	23,010.45
2000	36.29	1,280,211.00	35,277.24	6.00	102,000.00	17,000.00	9.71	194,200.00	20,000.00	52.00	1,576,411.00	30,315.60
2001	29.04	1,142,000.00	39,325.07	7.00	118,000.00	16,857.14	0.89	19,900.00	22,359.55	36.93	1,279,900.00	34,657.46
2002	46.21	1,839,400.00	39,805.24	26.98	485,640.00	18,000.00	1.77	53,800.00	30,395.48	74.96	2,378,840.00	31,734.79
2003	60.02	2,920,350.00	48,656.28	0.00	0.00	0.00	2.22	128,500.00	57,882.88	62.24	3,048,850.00	48,985.38
2004	16.85	1,209,550.00	71,783.38	6.00	288,000.00	48,000.00	10.59	912,700.00	86,185.08	33.44	2,410,250.00	72,076.85
2005	2.00	232,500.00	116,250.00	2.15	146,000.00	67,906.98	40.89	3,047,900.00	74,539.01	45.04	3,426,400.00	76,074.60
2006	7.50	830,000.00	110,666.67	1.00	70,000.00	70,000.00	52.30	3,652,250.00	69,832.70	60.80	4,552,250.00	74,872.53
2007	13.68	1,353,000.00	98,903.51	2.10	208,000.00	99,047.62	12.41	1,155,150.00	93,082.19	28.19	2,716,150.00	96,351.54
Totals	366.60	13,660,313.00	37,262.17	125.69	2,225,440.00	17,705.78	141.86	9,278,764.00	65,407.90	634.15	25,164,517.00	39,682.28

Intermunicipal Flows of Pine Barrens Credits as of 1/1/08				
Destinations	Originating from			Totals
	Brookhaven Town	Riverhead Town	Southampton Town	
Brookhaven Unincorporated (District 200)		0.15	5.00	5.15
Patchogue Village (204)	0.20			0.20
Huntington Unincorporated (400)		1.00		1.00
Islip Unincorporated (500)	2.50	2.10	4.50	9.10
Riverhead Unincorporated (District 600)				0.00
Smithtown Unincorporated (800)			0.10	0.10
Southampton Unincorporated (District 900)	0.46			0.46
Quogue Village (902)			0.26	0.26
Southampton Village (904)			4.70	4.70
Westhampton Beach Village (905)			5.45	5.45
Totals	3.16	3.25	20.01	26.42

See following pages for listing of individual redemptions.

Pine Barrens Credits – Determining the Allocation

1. A “Letter of Interpretation” (“LOI”) is issued. *This is an estimate of Credits, based upon 1995 zoning, acreage, and any existing development.*
2. **Applicant accepts or appeals.** *Accept? Next step is a “PBC Certificate” and a conservation easement. Appeal? Commission holds hearing and decides final allocation. The appeals record to date is . . .*



Pine Barrens Credit Appeals Statistics 1996 through 2007				
	Brookhaven	Riverhead	Southampton	Totals
Number of Appeals <i>(an appeal may affect several parcels)</i>	30	0	25	55
Total Affected Parcels	169	0	150	319
Decisions Granting Additional Credits <i>(varies from amount sought)</i>	10	0	11	21
Additional Credits Allocated <i>(above the original LOI allocation)</i>	46.77	0.00	26.28	73.05
Decisions Leaving LOI Allocation Intact	18	0	12	30
Appeals Withdrawn Without Decision	1	0	2	3
Appeals Pending	1	0	0	1

**Suffolk County Treasurer's Office
The Pine Barrens Credit Program**

Balance as of August 31st, 2007	\$3,227,962.41
Additional Deposits	0.00
Interest (see below for details)	46,551.30
Disbursements	0.00
Balance as of December 31st, 2007	\$3,274,513.71

**Interest Earnings & Disbursements
For the Months of September, October, November & December 2007**

Interest Earnings

Municipal Insured Public Funds Variable T-Bill Account

September	13,265.60
October	11,616.92
November	11,549.83
December	10,118.95

\$46,551.30

	<u>Rate</u>
09/01/07 - 09/30/07	5.000%
10/01/07 - 10/31/07	4.220%
11/01/07 - 11/30/07	4.320%
12/01/07 - 12/26/07	3.575%
12/27/07 - 12/31/07	4.250%

Disbursements

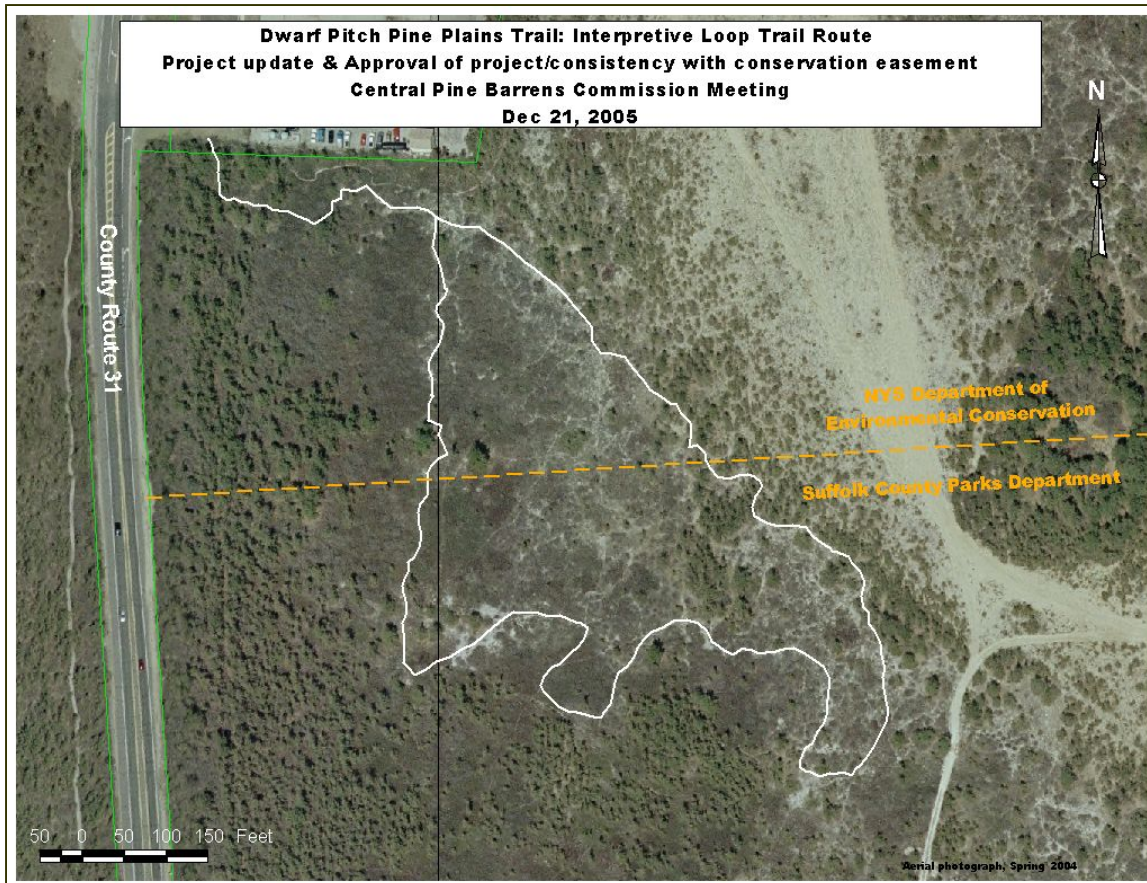
NONE

\$ -

Connecting the Pine Barrens Credit Program and Natural Resource Management: A Case Study

- April 8, 2005: *100 acres of the “WJF Realty” Westhampton holdings enter Pine Barrens Credit Program*
- April 22, 2005 - Earth Day: NY State announces acquisition of all 309 acres via joint State, County, Town and Nature Conservancy effort. *NY State and Suffolk County each purchase 50 of the easement acres.*

*Left: Trail layout for the 0.6 mile route.
Right: Long time volunteer Larry Paul helps stake out the Trail during Winter 2006-07.*



- Dec. 21, 2005 – Commission finds *Dwarf Pine Plains Interpretive Trail is consistent with the easement.*
- June 1, 2007 - *Trail dedicated in honor of 2007 National Trails Day. NYS DEC, SC Parks and SC Water Authority are host landowners.*

Compliance and Enforcement (CAE)

CAE Overview

In August, the Commission hired a Compliance and Enforcement Coordinator, Mr. Lawrence Hynes, filling a new position created pursuant to the Commission's 2005 Staffing and Administrative Report.

The four major areas of duties and responsibilities for this position are described below.

- **Response to, and investigation of, land use and natural resource complaints and general field incident reports** received by the Commission. This is done in conjunction with other agencies having jurisdiction, and includes the reporting of findings and appropriate follow up work. In the case of verified violations of land use and natural resource laws, Notices of Violation may be issued as directed by the Commission.
- **Conducting of compliance inspections of Commission permitted land use activities and development projects** to ensure that development does not exceed the scope of the permit conditions, and to do so in a timely fashion as projects are implemented. Compliance inspections are performed both before and after Commission permits are issued in order to assure full compliance with permit conditions.
- **Conducting of yearly compliance inspections and completion of field reports for all conservation easements** held by the Commission, in conjunction with the individual landowners and with cognizance of the individual conditions of each easement.
- **Coordination of Law Enforcement Council activities** with the Protected Lands Council, the Wildfire Task Force, and other public and private entities.

In addition to these primary responsibility areas, the Commission's Compliance and Enforcement Division staff also is responsible for:

- **Regular outreach** efforts to state, county, and town land use enforcement agencies,
- **Coordination with emergency management and response agencies** as appropriate,
- **Investigative support** to the New York State Attorney General's Office and to the Suffolk County District Attorney's Office on land use Plan violation referrals.
- **Coordination of CAE work with the Commission's Land Use and Pine Barrens Credit Divisions**, and
- **Working with the Land Use Division staff to inform contractor and development trade organizations** about the goals and objectives of the Act and the Plan, for the purpose of assuring compliance in advance and thereby preclude future violations.

Summary of 2007 CAE Work

The following figure summarizes the CAE efforts in 2007 by Development Project compliance visits, Conservation Easement Monitoring, and CAE Incident Reports. As part of the CAE start up, all previous incident reports have been retrieved, numbered, and are being tracked according

to the Pine Barrens Incident Monitoring Protocol revised by the Commission during 2007.

In the four months since the establishment of the CAE Division, there have been several noteworthy accomplishments. The most important, and the first step, was to begin meeting with state, county and town representatives who have jurisdiction in the Central Pine Barrens. These meetings served to publicize and answer questions regarding the new Compliance and Enforcement Division of the Commission, and to open lines of communication and cooperation among all land use and natural resource enforcement offices.

Central Pine Barrens Incident Reports

In September, we updated and revised the Central Pine Barrens Incident Report. This report is filled out on incoming calls to the Pine Barrens Commission office on potential violations that occur in the Central Pine Barrens. On September 19th, the Commission approved the revised Incident Report and accompanying protocol (see accompanying figure).

To implement the revised incident reporting and tracking system, the CAE staff provided in house training to all Commission personnel during September, with a particular emphasis upon the administrative and land use personnel. These staff members are typically the first point of contact for incoming reports and callers, and the need for consistent and reliable Incident Report completions was emphasized.

As part of the start up of the CAE Division, the new CAE Coordinator, in conjunction with the land use and administrative staff, reviewed all prior land use complaints and violations in the Commission's files, assigning Pine Barrens Central Complaint Numbers to every past and current report. Further, every report now has a tracking status assigned, indicating whether it is "closed" or "open".

Pine Barrens Watch Program

The CAE staff is working closely with both the Environmental Education staff and the Science and Stewardship staff on several aspects of those Division's projects. One such example of this is the Protected Lands Council's ongoing ATV Damage Mitigation Project, which aims to restore and rehabilitate trails and other locations which have been affected by illegal off road vehicle use. Part of this coordination involves including the Law Enforcement Council in the ATV mitigation field work and ensuing enforcement. Another part of this coordination is the development of a Pine Barrens Watch program (1-877-BARRENS) to protect these intensively managed sites from being damaged again. Reporting and responding to any illegal activity is an important component of this work, and requires the mutual involvement of land managers, park patrons, citizens, neighbors, and area school students.

Development and Land Use Compliance Site Visits Reporting period is 8/21/07 through 12/31/07			
Area	Brookhaven Town (District 200)	Riverhead Town (District 600)	Southampton Town (District 900)
Core Preservation Area	2	0	0
Compatible Growth Area	5	0	0

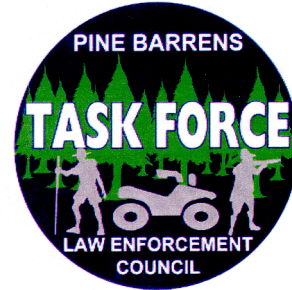
Pine Barrens Credit Program Conservation Easement Monitoring (*) Reporting period is 8/21/07 through 12/31/07				
Core Preservation Area (**)	Brookhaven Town (District 200)	Riverhead Town (District 600)	Southampton Town (District 900)	Totals
Tax Map Sections				
Total	41	6	48	95
Monitoring done	6	5	17	28
Pending	35	1	31	67
Tax Map Sections				
Total	321	21	315	657
Monitoring done	18	20	146	184
Pending	303	1	169	473
(*) Does not include one conservation easement held by the Commission within the Core area of Southampton Town in satisfaction of a 1997 violation settlement.				
(**) There are no conservation easements held by the Commission that are entirely within the Compatible Growth Area. One easement covering both Core and CGA land is counted above.				

Compliance and Enforcement Incidents Reporting period is 1/1/07 through 12/31/07				
Area	Brookhaven Town (District 200)	Riverhead Town (District 600)	Southampton Town (District 900)	Totals

Core Preservation Area	12 (4 pending, 8 closed)	1 (pending)	3 (1 pending, 2 closed)	16 (6 pending, 10 closed)
Compatible Growth Area	9 (6 pending, 3 closed)	3 (all pending)	1 (pending)	13 (10 pending, 3 closed)
Totals	21 (10 pending, 11 closed)	4 (all pending)	4 (2 pending, 2 closed)	29 (16 pending, 13 closed)

Law Enforcement

*This section courtesy of the Pine Barrens Law Enforcement Council.
Sgt. Arthur Pendzick,
Suffolk County Park Police, Chair
Lt. Dallas Bengel,
NYS EnCon Police, Vice Chair*



The Pine Barrens Law Enforcement Council

The Pine Barrens Law Enforcement Council (PBLEC) is made up of 25 member agencies who share the responsibility of protecting and safeguarding the Central Pine Barrens. Together and independently through combined law enforcement efforts they work within their various jurisdictions to accomplish this goal.

The PBLEC has been a major means of communication, information, cooperation and accomplishment among these individual agencies since 1994; in 2007 we have carried on that success.



The Jan. 28, 2007 Multi Agency Task Force detail at Southaven Park Police Headquarters.

The Environmental Benefit Fund and Equipment Cache Upgrades

Equipment purchasing highlights for 2007 include:

- 3 new all terrain vehicles (ATV's),
- 1 ATV trailer,
- 6 extra ATV tires and rims,
- 2 global positioning units (GPS), and
- 1 video playback unit with charger for our surveillance equipment.



The 2007 EBF equipment purchases included this Polaris Ranger ATV, shown here being transferred to the NYS DEC EnCon Police.

This equipment was purchased with monies from the Environmental Benefit Fund (established in 2005 through a State environmental enforcement action and at no cost to the public) and is available for use by the Commission for support of the PBLEC. The purchased equipment is available to all of the PBLEC member agencies to help them in their pine barrens enforcement efforts. The PBLEC extends its sincere thanks to the Purchasing and

Finance Departments, and related staff, of the Suffolk County Water Authority for their professional assistance with all 2007 disbursements and purchases

In addition, a grant application was submitted through the Commission at the request of the PBLEC in December to the US Smokeless Tobacco Company, which donates several ATVs each year to law enforcement, fire and emergency response organizations.

The PBLEC also sent out a letter to Brookhaven Town (who has been the beneficiary of hundreds of illegal ATV impounds from our Task Force) requesting that any seized and unclaimed ATV's be made available for PBLEC member agency use.

Legislative Accomplishments

At its February 22nd meeting, the PBLEC passed a resolution to support a state peace officer bill for the US Fish & Wildlife Refuge Officers and National Park Service Park Rangers so that they could better do their job and work with the PBLEC members. The Commission supported this proposal at its April 18th meeting. The US Fish and Wildlife Service and the National Park Service each provided written letters of support for the proposal.

With the sponsorship and strong support of State Senator Ken LaValle, Assemblymen Steve Englebright, Fred Thiele, Marc Alessi, and Roy McDonald, this bill (A8773/S5159) passed the Legislature, and was signed into law as Chapter 550 of the Laws of 2007 by Governor Spitzer on August 15th.

This was one of seventeen peace officer bills that were proposed in New York State in 2007, and the only one that was signed into law. The PBLEC thanks the Commission, the State legislative sponsors, and the Governor for their steadfast support of this legislation.



In addition to enforcement, PBLEC members are assisting with the PLC's ATV Damage Mitigation project in Flanders, as in this November field session.

Field Projects: Training, Mitigation, and Vehicle Removals

ATV training for officers of the PBLEC agencies has always been a priority, but unfortunately we lost use of our regular training grounds last year. The Council has been pursuing a new area in which to continue this training, and we hope to resume field officer training early in 2008.



Field patrols always yield surprises, such as this March fire in the Manorville Hills, shown here being extinguished by the Manorville Fire Department.

The PBLEC has also been actively involved with the Wildfire Task Force and the Protected Lands Council (PLC) of the Commission, and particularly with a pilot program of the PLC, namely the ATV Damage Mitigation Committee in its planning and field operations.

This Committee has established a test area in Flanders to deter illegal ATV use by erecting various barricades and fences which are monitored regularly and repaired promptly when necessary. Thus far, there have been positive results and a second adjacent mitigation area is now being planned.

The PBLEC has been working with the Army Air National Guard on another helicopter air lift of abandoned vehicles. One was completed at the Edgewood State Preserve in the Spring of 2007 and another is being planned in the Pine Barrens for 2008. Locations of abandoned and airlift eligible vehicles have been inventoried, and will hopefully be removed during the coming year.

Special Topics and Speakers

As usual, ten PBLEC meetings were held during the year, with the Council members discussing and working on many different law enforcement and public safety objectives.

Several speakers provided informative and interesting presentations at the PBLEC meetings during the year, including:

- At the February 22 meeting, Greta Guarton, Associate Director of the Nassau/Suffolk Coalition for the homeless, gave a presentation concerning the homeless.
- At the September 27 meeting, Lt. Dallas Bengel of the NYS Environmental Conservation Police gave a presentation on hunting laws and regulations.
- At the December 13 meeting, Ann Carter, Senior Environmental Analyst at the Pine Barrens Commission in charge of the ATV Mitigation Committee, gave a presentation and update on the ATV mitigation program.



ATV use is increasing along public highways, as in this November field detail along South Street in Manorville.

The Public Education Committee

The joint Public Education Committee of the PBLEC and the Wildfire Task Force has been temporarily on hold due to the resignation of its Chair, former Riverhead Fire Marshal Bruce Johnson who has left the Town for new employment. A new chairperson is being sought so that this committee can resume the good work that it has been doing under his leadership.

Multi Agency ATV Task Force Results

An important function of the PBLEC has been its Multi Agency ATV Task Force, in which different agencies (usually three to five at a time) pool their resources to patrol for ATV, vehicle, environmental conservation, and other violations that they may find in and around the Central Pine Barrens.

In the last 5 years, over 110 Multi Agency ATV Task Force details have been held, resulting in over 700 illegal ATVs being impounded and greater than 1700 ATV related summonses being issued. There have also been numerous arrests for various felonies and misdemeanors. A separate 2007 Annual Report for the Multi Agency ATV Task Force is available, and contains complete information and further statistics.

The good news is that, for the first time in the years of the Task Force's existence, ATV enforcement statistics have drastically declined, showing a definite reduction of illegal ATV use in the Pine Barrens. This is also evident in the physical reclamation of many trails and fewer complaints of ATV use within the Pine Barrens. Unfortunately, ATV use has increased outside the Pine Barrens, especially on public roadways.

During 2007, the enforcement agencies on the PBLEC have collectively compiled the following enforcement statistics within and around the Central Pine Barrens region:

- 729 ATV complaints recorded (down from 1,150 in 2006)
- 306 ATVs impounds made (down from 484 impounds in 2006)
- 531 tickets written for illegal ATV



Off road vehicle erosion is severe in certain locales. This scene from a September patrol shows the dramatic grade drop that can occur.



Reported stolen from New Jersey, this burnt and abandoned pick up was found in February by a Multi Agency ATV Task Force detail.

operation (down from 775 tickets in 2006)

- 7 ATVs reported stolen **
 - 10 stolen ATV's recovered (same as 2006) resulting in 7 arrests for possession of stolen property and other charges (arrests down by 3 from 2006)
 - 2 known ATV related injuries
 - 2 ATV related fatalities **
 - 72 illegal dumping arrests and/or summons issued (up from 44 in 2006)
 - 200 tickets for Environmental Conservation Law violations (principally hunting and fishing violations; up from 168 in 2006)
 - 292 trespass arrests and/or tickets ** (many of these to illegal ATV riders)
 - 84 miscellaneous Penal Law violations (drugs, criminal mischief, etc.; up from 41 in 2006)
 - 60 stolen vehicles recovered **
 - 357 abandoned vehicles investigated **
 - 72 homeless person complaints handled (up from 6 in 2006)
- (** figures not compiled in the 2006 PBLEC Report of Activities)

The above figures reflect the collective work of the following agencies:

- Brookhaven Town Public Safety
- New York State Environmental Conservation Police
- New York State Forest Rangers
- New York State Park Police
- New York State Police
- Riverhead Town Police
- Southampton Town Police
- Southampton Town Public Safety
- Suffolk County Park Police
- Suffolk County Police 5th Precinct
- Suffolk County Police 6th Precinct
- Suffolk County Police 7th Precinct
- Suffolk County Sheriff's Office
- United States Fish and Wildlife Service



Dumping is a 24 hour challenge in more remote areas, as shown in this February night time scene.

2007 Pine Barrens Environmental Enforcement Officer Awards

The 2007 Environmental Enforcement Officer of the Year Awards were presented to:

- Sgt. John Skippon (Brookhaven Town Public Safety)
- Officer Joshua Ver Hague (New York State Department of Environmental Conservation Police)
- Officer Erick Duran (New York State Park Police)
- Deputy Douglas Bassemir (Suffolk County Sheriff's Office)

- Officer Peter Mandleur (Suffolk County Park Police)

A special award from the PBLEC goes to Sgt. Arthur Pendzick (Suffolk County Park Police).

One other Special Award from the PBLEC for a single Environmental Action exemplary in nature was awarded to the following officers:

- Ranger Bryan Gallagher (NYS Forest Rangers)
- Officer Mark Stromski (Riverhead Town Police)
- Riverhead Fire Marshal David Andruszkiewicz

In Closing

We look forward in 2008 to our enforcement agencies continuing to work together to protect our natural resources in the Central Pine Barrens for future generations. We also thank the Pine Barrens Commissioners and staff for their continuing support as part of the PBLEC team.



The Pine Barrens Law Enforcement Council has made interagency cooperation and communication a priority since its inception in 1994. To quote an old but true aphorism:

“TEAM”: Together Everyone Achieves More”.

1-877-BARRENS

(All photos courtesy of

SC Park Police)

Sgt. Arthur Pendzick,

(All photographs are courtesy of Sgt. Pendzick.)

Further information: www.pb.state.ny.us/chart_stewardship_main_page.htm

Protected Lands Council 2007 Highlights

Dwarf Pine Plains Trail

- Established a new 6/10 mile loop trail
- Multi-Party cooperative project in Westhampton (CR-31). Landowners are SCWA, DEC, & Suffolk County
- Trail opening held in June 2007
- Kiosk and interpretive signs will be installed soon.

ATV Damage Mitigation Pilot Project

- Currently implementing this multi-party cooperative project on 4000 acre area in Flanders. Primary Landowners are DEC, Suffolk County
- Phase A and Phase B; each about 2000 acres
- Installed barricades and signage on Phase A at problem access points to deter illegal access and enable restoration
- Recruited and trained a multi-party monitoring and maintenance team (Volunteers & Agencies)
- Currently planning implementation of Phase B
- Working in cooperation with the Law Enforcement Council.

Invasive Plant Inventory and Assessment Project

- Completed the inventory and mapping of invasive plants in the Central Pine Barrens
- Joint project with TNC
- Most of the plant infestations follow roads, trails, development, and other disturbed areas

Student Conservation Association Invasive Plant Management Project

- Currently planning to obtain a 5-member team to assist land managers with invasive plant control and restoration work on protected lands during the 2008 growing season
- Land managers have proposed high priority projects using criteria designed to maximize protection of Pine Barrens resources.

Fire Tower Restoration Feasibility Study

- Developing criteria for site selection

2007 New York Wildfire & Incident Management Academy Concludes 10-day Run at Brookhaven National Lab

25 Courses Offered During Academy's 10th Anniversary Year

Upton, NY - The New York Wildfire and Incident Management Academy (NYWIMA), which ran from October 26, 2007 through November 4, 2007 at Brookhaven National Laboratory (BNL) and at Suffolk County's Fire Rescue and Emergency Services offices in Yaphank recently concluded its tenth year of operations and has now provided training to over 4,500 firefighters and emergency response personnel over its ten year existence.

The Academy's goal is to provide for a safe learning environment for wildland firefighters and all-risk incident managers and to foster greater networking opportunities and partnerships between participants from federal, state, and local agencies.

To aid in achieving this objective, the NYWIMA is managed to mirror an actual incident utilizing the Incident Management System (ICS) under the direction of an Incident Management Team (IMT). The IMT reflects the interagency and cooperative nature of today's incident management philosophy with team members coming from federal, state, and local agencies.

In total, 571 personnel participated in the 2007 Academy. Participation included 64 overhead staff members, and 37 instructors from federal, state and local agencies. In total, 470 students representing 33 states and one Canadian province participated in the 2007 Academy.

This year the Academy offered 25 courses in a wide variety of areas resulting in the Red Card certification of wildland firefighters and the re-certification of firefighters. Additional training certification was completed in the following classes: Crew Boss, Advanced Wildland Firefighter, Powersaws. The Academy also offered and Situation Unit Leader and as well as a Tactical Decision Games Workshop.

This year the Academy debuted a new five-day incident management team workshop. The workshop addresses the need for students (incident managers) to be able to apply the knowledge they gained from classroom exercises to real-life situations. To do this the Academy developed a unique program that is designed to replicate an incident which would utilize the incident command system in order to manage first responders efforts.

"The Incident Management Team Workshop was designed to give emergency response managers practical experience in handling large-scale emergency response efforts," Academy Coordinator Charles T. Hamilton said. "This program involved two full-day scenarios where building team cohesion, proper management principles and overall effectiveness was evaluated by some of the nation's top emergency response managers. The one-on-one coaching trainees in the workshop received from some of the nation's top incident managers will help workshop members develop skills in key foundation positions under the Incident Command System (ICS) organization."

The New York State Department of Environmental Conservation (DEC) conducted the 2006

Academy along with a consortium of federal, state and county agencies including: (Federal) Brookhaven National Laboratory, Bureau of Land Management, National Park Service, United States Coast Guard, United States Forest Service, United States Fish and Wildlife Service (State) Central Pine Barrens Commission, Central Pine Barrens Wildfire Task Force, Massachusetts Department of Environmental Management, New York State Emergency Management Office, New York State Office of Fire Prevention and Control (City, County and Other Organizations) Fire Department of New York (FDNY) Suffolk County Department of Fire, Rescue, and Emergency Services, Suffolk County Department of Parks, Recreation, and Conservation, the Colorado Wildfire Academy, and the Northeast Compact, an international organization focusing on wildland fire prevention, education and suppression activities. The Compact is composed of representatives from seven states and three Canadian provinces.

The Academy was developed in response to the 1995 Long Island Pine Barrens wildland fires as well as to the increased overall frequency of wildland fires on Long Island. All courses were taught by certified wildland fire and incident command instructors, and meet all National Wildfire Coordination Group (NWCG) standards.

"The courses were extremely successful and the New York Academy contributed to expanding the pool of certified resources that will be available for the 2008 wildland fire season, and to respond to emergency incidents locally and nationally," Academy Coordinator Charles T. Hamilton said.

For further information regarding the Academy, please contact Charles Hamilton at (631) 444-0270, or visit the Academy's website <http://www.dec.ny.gov/education/73.html> .

Central Pine Barrens Daily Fire Ratings for 2007

Week	Sun	Mon	Tue	Wed	Thu	Fri	Sat
10/28 - 11/3	Low	Low	Moderate	Low	Low	<i>Daily ratings suspended till Spring '08</i>	
10/21 - 10/27	Low	Low	Moderate	Low	Low	Low	Low
10/14 - 10/20	Low	Low	Moderate	Low	Low	Low	Low
10/7 - 10/13	Moderate	Moderate	Moderate	Low	Low	Low	Low
9/30 - 10/6	Moderate	Low	Low	Low	Low	Moderate	Moderate
9/23 - 9/29	Low	Low	Low	Low	Low	Low	Moderate
9/16 - 9/22	Low	Low	Low	Moderate	Moderate	Low	Low
9/9 - 9/15	Low	Low	Low	Low	Low	Low	Low
9/2 - 9/8	Moderate	Moderate	Moderate	Moderate	Low	Low	Low
8/26 - 9/1	Low	Low	Low	Low	Low	Moderate	Moderate
8/19 - 8/25	Low	Low	Low	Low	Low	Low	Low
8/12 - 8/18	Low	Low	Moderate	Low	Low	Moderate	Low
8/5 - 8/11	Moderate	Low	Moderate	Low	Low	Low	Low
7/29 - 8/4	Low	Low	Low	Moderate	Moderate	Low	Low
7/22 - 7/28	Moderate	Low	Low	Low	Low	Low	Low
7/15 - 7/21	Moderate	Moderate	Moderate	Low	Low	Low	Low
7/8 - 7/14	Low	Low	Low	Low	Low	Moderate	Moderate
7/1 - 7/7	Moderate	Moderate	High	Low	Low	Low	Low
6/24 - 6/30	Moderate	Low	Low	Low	Low	Low	Moderate
6/17 - 6/23	Low	Low	Low	Low	Moderate	Moderate	Moderate
6/10 - 6/16	Low	Low	Low	Low	Low	Low	Low
6/3 - 6/9	Low	Low	Low	Low	Low	Low	Low
5/27 - 6/2	Moderate	Moderate	Moderate	Moderate	Moderate	Moderate	Moderate
5/20 - 5/26	Low	Low	Low	Low	Moderate	Moderate	Moderate
5/13 - 5/19	Moderate	Moderate	Moderate	Moderate	Low	Low	Low
5/6 - 5/12	Moderate	Moderate	Moderate	Low	Low	Low	Low
4/29 - 5/5	Low	Low	Low	Low	Moderate	Moderate	Moderate
4/22 - 4/28	Moderate	High	High	High	Low	Low	Low
4/15 - 4/21	Low	Low	Low	Low	Low	Moderate	Moderate
4/8 - 4/14	Low	Low	Moderate	Low	Low	Low	Low
4/1 - 4/7			Low	Low	Low	Low	Low

Environmental Education Overview Annual Report 2007

During 2007, an Environmental Education and Outreach Coordinator was hired to help the Commission with its central mission and to provide educational opportunities on the Central Pine Barrens to citizens of Long Island. This position was created in September of 2007; from September through December we reached approximately 6,000 youth and adults through community outreach events, speaking engagements and school programs.

The Education coordinator works cooperatively with staff on existing programs, such as the Wildfire Task Force, the Protected Lands Council and the Law Enforcement Council.

The Core Responsibilities of the Education and Outreach Coordinator will be:

- Writing and distributing regular press releases and press advisories about newsworthy events;
- Respond to media inquires, telephone inquiries, mail inquiries and walk in visitors pertaining to environmental education and outreach;
- Writing and submitting newspaper/magazine opinion/editorials and guest columns;
- Providing public outreach at festivals, conferences and other event;
- Organizing and working with the Environmental Education Advisory Committee;
- Working with Central Pine Barrens staff on special Commission projects,
- Providing Pine Barren/Long Island Biodiversity teacher training opportunities for K-12 teachers needing Professional Development Points (PDP) for certification,
- Providing Long Island students and citizens Pine Barrens education programs; and
- Work with schools to use the Pine Barrens and the Environment as an integrating context for learning.

An Environmental Education Advisory Committee was created to assist the Environmental Education and Outreach Coordinator in an informal capacity. The members consist of education professionals with various backgrounds, including representatives from federal, state, and town, non-profit, K-12 educators and administrators, and higher education institution representatives. The committee will meet on a monthly to quarterly basis.

The Committee mission statement -

To promote awareness, appreciation and understanding to citizens of Long Island on the Pine Barrens ecosystem and the critical role it plays in maintaining a quality of life. This includes its species, landscapes, natural communities, ground water protection, and cultural and historical resources.

An initial set of goals and projects, in addition to on going administrative and other staff tasks have been prioritized and are underway for 2008. The first priority is the development of a comprehensive Environmental Education Plan. Within this plan the below projects will be Projects of Significance. **Projects of Significance -**

- **Plan, establish and build Pine Barrens Education Center:** The Pine Barrens Commission will pursue establishing a Pine Barrens Education Center/Visitors Center. This center is will be home to year round interpretation displays and informational kiosks. The Pine Barrens Education Center will be designed to encourage school visits by focusing on biological, historical, and cultural information correlated to the NY State standards. This information will also be appropriate for the general public. This facility will also be used for programming such as weekend events and school break programs.
- **Write, design, edit and distribute Pine Barren Education programs and curriculum resource materials: (This will include hands on interactive programs for school and library visits):** In lieu of creating another Pine Barrens curriculum due to the existence of curricula developed by the Pine Barrens Society and the New Jersey Pinelands Commission, we will write, design and distribute pine barrens curriculum resource materials and hands-on, interactive pine barrens classroom programs.
- **Organize and carry out an annual Pine Barrens Discovery Day:** An annual Pine Barrens Discovery Day will be organized and implemented. This will include educational workshops, nature walks, and presentations. A date will be determined.
- **Create and maintain a Central Pine Barrens Speakers Directory:** The Pine Barrens Commission will offer to the public the Pine Barrens Speakers Directory. Knowledgeable volunteers who have extensive experience speaking to k-12 students will be listed in a directory. These speakers will be an invaluable in assisting the Commission in responding to Pine Barren program requests. Speakers will be listed by topic of expertise; wildlife, plants, history, culture, archeology, recreation and science and ecology. Our aim is to improve and expand citizens of Long Island's knowledge of the Central Pine Barrens.
- **Create an annual poster/art contest:** The Central Pine Barrens Commission will offer an annual *Protect our Pine Barrens* art contest. This contest will be open to 5th grade classes in schools in the Core and Compatible Growth area of Long Island's Pine Barren regions. The contest will encourage students to utilize their artistic talents to express the importance of protecting Long Island's Pine Barrens, and our drinking water resources. As part of the entry, students are asked to write a short description of how the Central Pine Barrens impacts them personally. The students of this region are the future stewards of our land and resources, so it's critical that we help to increase their awareness and under standing of the impact humans have positively and negatively on our local Pine Barren ecosystem and ultimately our drinking water sources.

Future priorities:

- Creation of an Environmental Education webpage on the Central Pine Barrens website.
- Creation of a comprehensive Pine Barrens Trail Guide.
- Create Natural History Fact sheets for the Pine Barrens.
- Create an annual Short Course.
- Develop, write, and design a Central Pine Barrens Newsletter.
- Develop a Central Pine Barrens Speaker Series at local venues.

Pine Barrens Advisory Committee 2007 Highlights

- During, 2007, **the Committee met two times (8/2 and 9/5).**
- Both sessions were **devoted to the pending Central Pine Barrens Plan amendments.**
- These meetings were partly follow ups to the five 2006 Committee meetings.
- Plan amendment discussions focused upon the land use provisions contained in *Chapter 4: Review Procedures and Jurisdiction*, and *Chapter 5: Standards and Guidelines for Land Use*.
- Although *Chapter 6: Pine Barrens Credit Program* was discussed briefly, the Committee deferred detailed discussions and any change recommendations for this section to the Pine Barrens Credit Clearinghouse Board of Advisors.
- **Within *Chapter 4: Review Procedures and Jurisdiction***, the Committee analyzed and discussed in detail several major topics:
 - Application completeness criteria
 - Definition of crucial Plan terminology (e.g., “project site”, “development”, etc.)
 - Critical Resource Area changes and additions, especially those proposed by Brookhaven Town
 - New Compatible Growth Area “sending areas” for Credits, including the Brookhaven Overton Preserve and Middle Country Road “transition areas”
 - Development of Regional Significance (DRS) thresholds, including additions to the Plan. This included particular attention to a handful of technically difficult thresholds.
- **Within *Chapter 5: Standards and Guidelines for Land Use***, discussion centered around both reorganization of 1995 Plan materials, as well as new text:
 - **Sanitary waste, septic treatment**, and applicable SC Health Department standards.
 - Incorporation of state of the art **Source Water Assessment Protection** data and maps into the development review process.

- **Wetlands, runoff, and surface water** provisions, including new language re impervious surfaces and natural drainage.
 - **Updates to the traditional “vegetation clearing” standard** to reflect the Commission’s years of experience in applying this
 - **A new and crucial “open space standard”**. This will incorporate the “conservation design” method for determining what portion of a parcel will be set aside to satisfy the new open space percentages
 - **Invasive species, soil, and steep slope** standards and guidelines
 - The new **“tall structures” standard** and visual resource protection
- The AC reported the results of its work at the 9/19 Commission meeting. Excerpting from those minutes: “. . . he (Mr. Jones) emphasized the Committee’s very strong support for the new proposed open space standard to complement the existing vegetation clearance standard. Specifically, he identified the conservation design principle contained within the new open space standard as being essential. He noted that conservation design first examines the land and its natural resources to determine what areas must be set aside, as a precondition to placing development on a project site.

Mr. Jones stated that the Committee has finished its review, and would be pleased to review any other matters which the Commission may wish to forward to it.

Mr. Amper of the LI Pine Barrens Society and Vice Chair of the Committee, also spoke about the working draft and the Committee’s review, and thanked the staff for pulling together the working draft.

Mr. Scully then thanked the Committee and staff for its work on the Plan amendments. A brief discussion was held regarding the next steps, including numerical analysis of the Credit program, final language for some of the unsettled points in the draft, and the process by which the Plan changes would be accepted by the Commission and implemented by the Towns through code changes.

Legislation of Interest

State

During 2007, the State Legislature passed, and the Governor signed (7/3/07 as Chapter 112 of the Laws of 2007), bill number S.3431 / A.6275 authorizing a **land swap between the NYS DEC and the Longwood School District**. This bill partly resolves violations of both a DEC permit and the state pine barrens law that occurred at the District's Ridge Elementary School in Brookhaven Town. These violations were resolved by a three part stipulation. One component of that was the transfer of a small strip of the DEC Ridge Conservation Area to the District (which had been used by the District under a prior DEC permit) and the transfer of approximately 2.5 acres of District land to the State DEC. The transfer of the DEC land required two successive session approvals of the State Legislature. The first approval was granted in 2006 (during the 2005-06 session) with the support of the Commission in June 2006.

Also passed by the State Legislature in 2007 was **legislation conferring state peace officer status on U.S. Department of the Interior Park Rangers with law enforcement authority**. This legislation was recommended to the Commission by the Pine Barrens Law Enforcement Council, which includes the U.S. Fish and Wildlife Service as a member. The Service's Refuge Officers work closely with the other LEC agencies' officers in field enforcement. The Commission formally requested the legislation (see the Law Enforcement Council section). S.5159/A.8773 was signed into law by the Governor on 8/15/07 as Chapter 550 of the Laws of 2007.

The Pine Barrens Commission – Organization and Resources

Office & Administration
<p>P.O. Box 587 3525 Sunrise Highway, 2nd Floor (Suffolk County Water Authority Technical Services Building) Great River, NY 11739-0587</p> <p>Voice: 631-224-2604 Fax: 631-224-7653 Hours: Mon - Fri, 8:30 am to 5:00 pm Pine Barrens Reference Library open to public (non lending!) Web: www.pb.state.ny.us E-mail: info@pb.state.ny.us</p>



Divisions & Principal Staff Contacts	
Administration	Ray Corwin Robin Mills Carol Sholl
Land Use & Development	Julie Hargrave
Pine Barrens Credit Program	Judy Jakobsen Carol Sholl
Science & Stewardship	Ann Carter Karen Eichelberger
Compliance & Enforcement	Lawrence Hynes
Education & Outreach	Melissa Griffiths
Legal	John Milazzo

The Commission's organization includes the interagency Councils that "make things happen" in the field.

Here, members of the Protected Lands Council representing NYS DEC, Suffolk County Parks, and other entities conduct a morning briefing before field work on the ATV Damage Mitigation Project in the Southampton area.

Central Pine Barrens References & Leads

Our two basic guiding documents:



- The Law: “The (NY State) Long Island Pine Barrens Protection Act of 1993”, codified in “New York Environmental Conservation Law Article 57”. Passed in July of 1993. Subsequently amended several times, as recently as 2006.
- The Regional Plan: Central Pine Barrens Comprehensive Land Use Plan, June 1995. Produced during a strict two year planning period, starting with the July 1993 legislation. (A “sunset provision” would have abolished the Commission and Act if this deadline was not met.) Amended three times. A fourth, comprehensive amendment is in progress (and *will* happen !).



Our basic info repository:

The Commission web site at:

www.pb.state.ny.us

The Act and the Plan are both available there, along with a (metric) ton – give or take – of other material.

