

**Central Pine Barrens  
Joint Planning and Policy Commission**



*Celebrating the Protection of the Central Pine Barrens for 25 years.*

**2017 Report**



**Office Location & Contact Information**

624 Old Riverhead Road (CR 31)

Westhampton Beach, NY 11978

Voice: 631-288-1079

Fax: 631-288-1367

<https://pb.state.ny.us>

[info@pb.state.ny.us](mailto:info@pb.state.ny.us)



# Central Pine Barrens Joint Planning and Policy Commission

**Carrie Meek Gallagher**, Commission Chairwoman, Governor's Appointee,  
and Regional Director, NYS Department of Environmental Conservation

**Edward P. Romaine**, Member and Brookhaven Town Supervisor  
*Designated Representative: Brenda Prusinowski*

**Sean M. Walter**, Member and Riverhead Town Supervisor  
*Designated Representatives: Jill Lewis and Daniel McCormick*

**Jay H. Schneiderman**, Member and Southampton Town Supervisor  
*Designated Representatives: Kyle Collins and Martin Shea*

**Steven Bellone**, Member and Suffolk County Executive  
*Designated Representatives: Sarah Lansdale, Dorian Dale,  
Andrew Freleng, and Janet Longo*

---

## Staff

(from the Suffolk County Water Authority)

**John W. Pavacic**, Executive Director  
**Judy Jakobsen**, Policy and Planning Manager

**Ann Carter**, Science and Stewardship Coordinator  
**Katherine Delligatti**, Assistant Academy and Administrative Specialist  
**Julie Hargrave**, Principal Environmental Planner  
**Timothy Huss**, Compliance and Enforcement Coordinator  
**Lawrence Hynes**, Compliance and Enforcement Coordinator  
**Michael Lewis**, Compliance and Enforcement Coordinator  
**James Mazzio**, Compliance and Enforcement Coordinator  
**John Milazzo**, Legal Counsel  
**Tim Motz**, Director of Communications  
**Melissa Griffiths Parrott**, Education and Outreach Coordinator  
**Carol Sholl-Ostrowski**, Administrative Assistant  
**Jerry Tverdy**, Environmental Analyst  
**Polly Weigand**, Ecologist

---

Website: <https://pb.state.ny.us>

Email: [info@pb.state.ny.us](mailto:info@pb.state.ny.us)





## REPORT CONTENT

*This document contains activity reports from the following  
Central Pine Barrens Joint Planning and Policy Commission  
Divisions and Councils for 2017*

Table of Contents	
Compliance and Enforcement Division	5
Environmental Education and Outreach Division	13
Land Use and Planning Division	19
Science and Stewardship Division	23
Central Pine Barrens Advisory Committee	41
Pine Barrens Credit Clearinghouse	43
Pine Barrens Law Enforcement Council	49
Wildfire Task Force	59
New York Wildfire & Incident Management Academy	67
Litigation Involving the Commission	71
Central Pine Barrens Commission Staff & Areas of Responsibility	77



## Compliance and Enforcement Division

Lawrence Hynes, Timothy Huss, Michael Lewis, James Mazzio,  
Compliance and Enforcement Coordinators

The Compliance and Enforcement Division of the Central Pine Barrens Commission is responsible for overseeing regulatory compliance within the approximately 100,005-acre multi-jurisdictional Central Pine Barrens area by working in cooperation with agencies responsible for regulating land use and development as per the mandates of New York State Environmental Conservation Law Article 57 of the Long Island Pine Barrens Protection Act. These agencies involve all levels of government—federal, state, county, town, and villages—all of which have jurisdiction and responsibility for assuring compliance, not only with the Act, but also with local laws and regulations. The objective of the division is to coordinate the efforts of these agencies and to help them ensure compliance with the Act and the Commission's Comprehensive Land Use Plan.

The division currently has three enforcement officers, all of whom began work for the Central Pine Barrens Commission on February 28, 2017, shortly after the retirement of Mr. Hynes in January. Collectively, they provide the Commission with many decades of experience in the protection of public natural resources and the enforcement of laws protecting those resources.

### Compliance and Enforcement Division Duties and Responsibilities

#### *Compliance:*

- Conduct inspections to ensure compliance with Commission-granted hardship waiver permits for development projects and permitted land use activities as per the Act.
- Provide regular review of permitting, compliance monitoring, and complaint response.
- Track and coordinate compliance inspections for all conservation easements held by the Commission through the Pine Barrens Credit Program.

#### *Enforcement:*

- Apply knowledge of New York State Environmental Conservation Law, Penal Law, Criminal Procedure Law and Vehicle and Traffic Law, as well as Suffolk County Code, to compliance and enforcement matters in the Central Pine Barrens.
- Respond to and investigate land use and natural resource complaints received by the Commission and report findings to the Commission as well as to other agencies having jurisdiction.
- Assist other regulatory agencies with investigations related to the Commission.
- Monitor areas where environmental violations occur frequently.
- Assist with the implementation of measures to deter and prevent environmental violations.
- Monitor and coordinate actions of the Law Enforcement Council (LEC).

- Provide education and training to the LEC relevant to Article 57 of the New York State Environmental Conservation Law.
- Represent the Commission and the LEC at relevant enforcement and emergency preparedness meetings.
- Serve as liaison to local elected and appointed officials.
- Provide investigative support for the New York State Attorney General’s office and the Suffolk County District Attorney’s office with regard to matters related to the Commission.
- Produce bi-monthly and annual compliance and enforcement reports for the Commission.
- Oversee and ensure proper maintenance of files, records, and databases related to compliance and enforcement and land use incidents.

**Significant New Cases Under Investigation**

In 2017, the division investigated 52 new cases. Some of the more significant cases currently being investigated include the following:

*Town of Southampton*

**Farm in Northampton:** The Commission is working with the Town of Southampton, Suffolk County Parks, and the New York State Department of Environmental Conservation to review compliance with state, county, town and Commission regulations with regard to construction of out buildings, clearing, and related agricultural activities where the town has acquired development rights.

**Industrial Site in Flanders:** Excess clearing of three lots in this industrial development has provided the division with cause for concern. The town’s chief environmental analyst is working to remedy the violations and assure future compliance.

**Industrial Site in Speonk:** Unauthorized clearing occurred and unpermitted structures were built in the compatible growth area of the Central Pine Barrens on this five-acre property. The division is assisting the town with this case.

*Town of Brookhaven*

**East Bartlett Road Land Clearing:**

A large swath of Suffolk County-owned land measuring approximately an acre and a half was cleared adjacent to homeowner’s property. Additionally, there are conservation easement viola-



Compliance & Enforcement Coordinators Lewis and Mazzio at the site of a significant unlawful clearing of county lands in the core preservation area.

tions on the homeowner's property. After notifying Suffolk County Parks, the Commission approved a resolution to take action and notices of violation were sent to the homeowner. Subsequently, the New York State Attorney General's office was notified and has taken the case.

### Illegal disposal of Solid Waste

The division regularly conducts surveillance at popular dump sites within the Central Pine Barrens to deter unlawful disposal activity and, when needed, work with other

agencies to coordinate site restoration. One site cleaned up by Commission staff is along Sunrise Highway near Speonk-Riverhead Road. This effort was started by the Commission's former compliance and enforcement officer. Used as a shortcut by unlawful dumpers, the site was restored by the New York State Department of Transportation in April. Workers also cordoned off the dirt road with fencing and an earthen berm.

In another coordinated effort, the Town of Brookhaven's Department of Waste Management restored an illegal dumping site on Toppings Path in Ridge. A popular trailhead for hikers



and mountain bikers, this area has been abused by people dumping construction debris, household garbage and bulk materials. In total, the town removed 62.8 tons of debris from the site. The town coordinated this effort with the NYSDEC to have a gated fenced barrier erected.

Additionally, by using video surveillance and performing frequent patrols of several key sites within the Central Pine Barrens, division staff has documented unlawful disposal of solid waste. In these instances, evidence collected by the division was turned over to the Law Enforcement Council for prosecution. Consequently, New York State Police charged one subject with the unlawful disposal of more than 100 cases of energy drinks in the Town of Southampton (see photo above). He was fined \$2,800 plus and paid \$700 for restitution. Violations for two other subjects caught on camera are pending in Southampton Town court. The video surveillance program established by the division has garnered local media attention including coverage on NBC News and News 12. These cases have helped deter unlawful dumping in the Central Pine Barrens.



Remnants of unlawful disposal of construction material and other debris on state land in Manorville.



## Environmental Enforcement

### *Recycling Facility*

What appeared to be an unlawful effluent was discovered by Commission staff on Route 112 in Coram during an inspection of a development project on an adjacent parcel. The division referred the matter to the New York State Department of Environmental Conservation's Division of Law Enforcement for investigation. Environmental Conservation officers subsequently issued two summonses to the operator of the facility for SPDES violations of the New York State Environmental Conservation Law. Ultimately, the company paid a \$3,750 fine and ceased the illegal discharge.

Environmental protection is an important role of the Central Pine Barrens Commission and the Compliance and Enforcement Division.

### *Encroachment onto Public Land and Unlawful Storage of Solid Waste*

In December of 2017, the division was notified by the DEC of a possible encroachment onto an approximately two-acre publicly owned parcel in Coram. A subsequent inspection confirmed that this parcel was being used by a neighboring commercial enterprise to store equipment, as well as DEC- regulated solid waste. Notices of Violations have been issued by the DEC Division of Materials Management and the Division of Law Enforcement is conducting a criminal investigation related to the unlawful disposal of the material. Additionally, the Town of Brookhaven issued summonses for various town code violations related to unpermitted clearing and storage of equipment.

### ATV Enforcement

Compliance Officers Huss, Lewis and Mazzio have accompanied members of the Law Enforcement Council on weekend ATV details organized by Suffolk County Parks deputy director of security. These details consistently apprehend illegal operators of ATVs in the Central Pine Barrens and are discussed further under the Law Enforcement section of this report.



Environmental Analyst Tverdy and Compliance Officer Lewis conduct a conservation easement related site inspection in Westhampton Beach in May.

### Conservation Easement and Development Project Site Visits

Division staff have met with the Commission's environmental analyst on several occasions to assist with the conservation easement monitoring program with an objective to increase site inspections and monitor activity on these parcels that have participated in the Credit program and now have conservation easements on them, held by the Commission. In 2017, the division, working closely with Commission staff and conducted 20 easement inspections. The division will continue to make this a priority to assist with the maintenance of compliance with the Conservation Easement Program, documenting violations when warranted, and working with property owners to ensure they are in compliance.

## Training

### *Southern Pine Beetle and Fire Management Seminars*

Since March 2017, the Commission's compliance and enforcement officers have attended various seminars, field trips, and training programs to enhance their understanding of the ecosystems and management programs in the Central Pine Barrens. These have included a two-day seminar and field trip on March 8 and 9 at the Brookhaven National Laboratory on the management and impact of the Southern pine beetle in the Central Pine Barrens, a session on Fire Management on May 3 and 4 and attendance of classes at the New York Wild-fire and Incident Management Academy in October. In addition to participating as students, the compliance and enforcement officers provided site safety and traffic control for the participants during the field trips. They have also assisted with tree cutting as part of the program to control the spread of the Southern pine beetle.

### *ATV Training*

In April 2017, Compliance and Enforcement Officers Tim Huss, Mike Lewis and Jim Mazzio completed ATV training under direction of the Suffolk County Sheriff's Office at Gabreski Airport in Westhampton Beach. Deputy Sheriff's John Noonan and Brian Dunn provided instruction on basic operational skills, safety issues, and maintenance of ATVs during the seven-hour session. The Deputies provided an outstanding presentation and practical operation program for the division and the members from the various other LEC agencies who attended.



SC Deputy Sheriff Noonan instructs the Compliance and Enforcement Division and

### *Chainsaw Training*



Compliance Officer Mazzio learns the fine art of felling a pitch pine.

Compliance and Enforcement Officers Huss, Lewis and Mazzio participated in a chainsaw training course in June along with seasonal employees of the NYSDEC involved in conducting Southern Pine Beetle management activities. A representative of the Game of Logging organization provided instruction on basic chainsaw operation and maintenance as well as practical field exercises in felling trees and cutting downed timber. The certified course has proven to be useful during the division's participation in tree thinning operations for beetle control. The training will also be useful in the event of emergency incidents that might require the assistance of the division.



### *New York Wildfire and Incident Management Academy*

Division members attended classes in June at the New York Wildfire and Incident Management Wildfire Academy. These included additional chainsaw training, and classes on criminal investigations and fire suppression.

### **Ecological Assistance**

The division routinely assists Commission staff and other agencies in their efforts to manage and protect the ecology of the Central Pine Barrens whether it is providing site security at outreach events or assisting with Southern Pine Beetle surveys or Pitch pine seed collection.

### **Meetings and Outreach**

Throughout the year, the division attended monthly meetings with members of the Central Pine Barrens Commission, providing opportunities for review of pending investigations by the division. Additionally, monthly enforcement meetings have been held with the Law Enforcement Council and meetings have been held with planning and code enforcement personnel and town attorneys from the Towns of Brookhaven, Southampton, and Riverhead as well as members of the New York State Department of Environmental Conservation's Division of Law Enforcement. The division has also met with environmental analysts from Suffolk County Parks in an effort to deter encroachment and other unlawful activity on county-owned lands. These meetings are essential to coordinate the efforts of the various member groups responsible for protecting the lands within the Core Preservation Area and Compatible Growth Areas of the Central Pine Barrens. The level of cooperation has been outstanding, as all parties involved have expressed much satisfaction over the additional enforcement resources now available to them from the Central Pine Barrens Commission.

<b>DEVELOPMENT PROJECT COMPLIANCE SITE VISITS</b>			
<b>Reporting Period: 8/21/07 - 12/31/16</b>			
Central Pine Barrens	Brookhaven (District 200)	Riverhead (District 600)	Southampton (District 900)
Core Preservation Area	80	22	26
Compatible Growth Area	87	10	11

<b>CONSERVATION EASEMENT MONITORING SITE VISITS</b>				
<b>Reporting Period :8/21/07 - 12/31/16</b>				
Core Preservation Area	Brookhaven (District 200)	Riverhead (District 600)	Southampton (District 900)	Totals
Tax Map Sections				
Total	46	9	55	110
Done	44	7	52	103
Pending	2	2	3	7
Tax Map Parcels				
Total	494	35	423	952
Done	485	35	411	931
Pending	8	0	9	17



## Environmental Education and Outreach Division

Melissa Griffiths Parrott, Education & Outreach Coordinator

### *Education and Outreach mission statement:*

*To promote stewardship through awareness, appreciation and understanding to Long Island residents of all ages on the critical role the Central Pine Barrens serves in maintaining their quality of life. This includes its species, landscapes, natural communities, groundwater protection, cultural and historical resources.*

The Education and Outreach Division develops, coordinates and maintains programming relevant to the Central Pine Barrens on a regional basis. The services the division provides include:

- Provision of public outreach as a participant in local festivals, conferences and other events.
- Working with all Commission staff on special Commission projects.
- Learning experiences on topics such as: Central Pine Barrens ecology, the Long Island Watershed, Long Island biodiversity, global biodiversity, the impacts of climate change and “A Day in the Life” educational programming and teacher training opportunities for grades k-12 and higher education institutions.
- Opportunities for engagement in citizen science.
- Creation, organization and presentation of Pine Barrens ecology oriented K-12 educational programs
- Writing and distributing regular press releases and press advisories about newsworthy educational and outreach events.
- Maintaining a presence on social media for key educational initiatives.
- Responding to media, telephone and mail inquires pertaining to environmental education and outreach.
- Developing and sustaining important partnerships to advance the mission of the Commission.
- Continuing to develop new programming to promote educational opportunities.
- Representing the Commission at national and international educational, scientific and advocacy conferences and events.
- Grant writing to support new and ongoing programming.

### In 2017, Commission Education and Outreach staff:

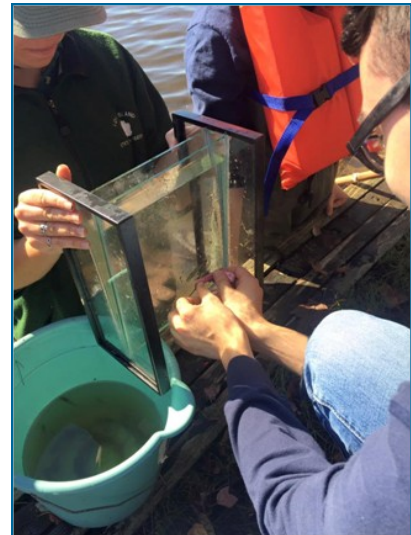
1. Developed, implemented and taught environmental education programs to grades k-12, STEM and STEAM related classes, high school research classes, higher education classes and various outreach events, such as festivals and conferences. In 2017, the division focused primarily on direct interaction with students, teachers and environmental professionals through hands-on programming, by increasing the number of one-to-one interactions with students and decreasing the number of large outreach events, such as fairs and festivals.

2. The division reached approximately 7,000 youths and adults through community outreach events, speaking engagements and school programs. With direct outreach through our hands-on, interactive, k-12 school programs, public programs and the “A Day in the Life” events, we reached a total of 4,569 students, 62 school districts, 158 teachers, 55 partner agencies and organizations, 145 natural history experts and more than 500 science teachers at the Suffolk County Science Teachers Association of New York State (STANYS) Conference. Also, through outreach events such as Pine Barrens Discovery Day, we indirectly reached approximately 1,200 people.



3. We continued to develop, coordinate and implement, eleven one-day “A Day in the Life” synoptic educational events in the following ecosystems: Carmans River, Peconic Estuary, Nissequogue River, Connetquot River, Carlls River, Mill River, Gardiner County Park, Green’s Creek, Massapequa Park Preserve, Forge River and Fire Island. These one day student science field research and citizen science efforts are in partnership with numerous agencies, organizations, scientists, educators and students. We worked with more than 2,500 students, 53 schools, 134 teachers, 55 partner agencies and organizations and 145 natural history experts collecting water quality data and biodiversity inventories from more than 75 sites along the eleven river ecosystems from the head to the mouth of the estuary.

We continue to secure funding and purchase and update supplies as needed. Some equipment and supplies purchased include; seine nets, Go Pro cameras, water quality test kits, dip nets, photographic tanks, anemometers, sling psychrometers, waders, calculators, soil corers, refractometers and more.



4. We continued a training program with Suffolk County Science Teachers Association of New York State (STANYS) and various “A Day in the Life” teachers to integrate a GIS Desktop program to our “A Day in the Life” programs. The goal is to demonstrate, develop and analyze maps related to water chemistry and biological distribution of organisms collected at varied sampling locations along the 11 different rivers.
5. For a fourth year, our “A Day in the Life” program partnered with Cold Spring Harbor Laboratory’s DNA Learning Center and their Barcode Long Island project. Barcode Long Island (BLI) gives students an understanding of the interaction between humans and the natural environment. Student teams use DNA bar-coding to explore, document, and track biodiversity on and around Long Island.

vant research experience while they contribute to their knowledge of the environment.

6. For our 10<sup>th</sup> year successful year, we developed, organized, and directed our annual “Barrens to Bay” summer camp. This camp is held in partnership with Wertheim National Wildlife Refuge in Shirley in the Core of the Central Pine Barrens. In 2017, approximately 150 campers enjoyed hands-on learning about the Central Pine Barrens, interpretive hikes, seining, dock scraping, scientific explorations, various activities and other learning opportunities over a six week period.



We again integrated a monarch butterfly conservation program, as well as other research programs designed to enrich the camper’s field study experiences.

#### Barrens to Bay Camp Family testimonials:

*“Our granddaughters have been participating in the “Barrens to Bays” Summer program at the Wertheim Preserve for several years. The girls look forward to attending the Camp every year, and our oldest granddaughter is looking forward to being a counselor-in-training in the near future and a full fledged counselor later on! The girls love the activities, especially using the microscopes, finding turtle egg remnants and of course, the fantastic seining experience. Even though they love the program because it offers so many wonderful activities with a terrific staff, WE love the program because we believe in the importance of teaching all of our children to be stewards and caretakers of our planet. Our granddaughters have deepened their connection to the earth and nature and it is very evident in the way that they conduct themselves when out and about. They believe in gardening, cleaning up litter, recycling, and keeping our bays clean. Thanks to you and the programs at Wertheim for providing such a wonderful opportunity for our girls!”*

*Kathleen and Bob Johnson  
Center Moriches, NY*



*“Ariana has participated in the “Barrens to Bay Summer” camp since she was eight years old. She has enjoyed attending camp every year and has learned many things about nature and the wildlife. Not only is she able to enjoy hiking the nature trails but, she loves the fact that she is able explore and learn about nature, the critters that live on the ground, the different kinds of fish that live in the water, and the importance of protecting our earth & surrounding environment. She loves going to the dock on the Carmans River and collect samples of fishes from the river. She enjoys the friendly atmosphere while in the classroom doing arts & crafts, as well as watching cryalis evolve from worms into beautiful butterflies. She's learned so many amazing things from composting to recycling, and enjoying all there is to know about our earth and enjoying it while protecting it as well. The camp is very interactive & she loves the friendly staff and making new friends as well.”*

*Maria Solano  
Islip, NY*

*“My two kids have attended the Barrens to Bay summer camp during the last two years. We live in Central Islip and we were happy to drive 30 minutes east every day, for them to have such an enriching experience. In addition, it was the perfect midpoint to share some time in summer with their friends living in Hampton Bays. My kids enjoyed all activities and they loved the outdoor explorations. They came home so happy every day, talking about new things they learned, that we were sure they were having a great time there. Thank you for offering this opportunity at such an affordable price.”*

*Ianina Correra  
Central Islip, NY*

7. Our 11th annual Pine Barrens Discovery Day event was a successful educational event. It is designed to educate families, students and other Long Island residents on the natural and cultural history of the Central Pine Barrens. The event was held at Wertheim National Wildlife Refuge in Shirley on Saturday, September 16<sup>th</sup>. The event proved successful with more than 700 people in attendance. In 2017, we had 11 fun shops, four natural history hikes and 20 exhibitors geared toward hands-on interactive learning and musical entertainment.



8. We continue to sit on the Steering Committee of the Long Island Natural History Conference, coordinating and planning the sixth annual Long Island specific event. We helped



secure the venue, speakers, poster session, food, registration, press releases and general organization for the three-day event.

9. We continue to improve education, research and historical programming with our international twin ecosystem and twinning's partner the Parco Regionale Migliarino San Rossore Massaciuccoli (MSRM) in Pisa, Italy. We did not have the funding to travel to Italy again this year, but continued to meet via Skype with our MSRM partners to improve learning and research opportunities. Longwood High School students and Istituto Tecnologico Industriale (ITI) High School students in Pisa, Italy met via web conferencing two times this year to compare their finding of each of their local river systems.
10. Education and Outreach staff attended the Climate Reality Leadership Corps training program in Pittsburgh, PA. In recent years climate change has affected Long Island and the Central Pine Barrens. Attending this training provided Commission staff an opportunity to build on their existing knowledge base and training skills to affectively educate students and others on this important issue.





## Land Use and Planning Division

Julie Hargrave, Principal Environmental Planner

The purpose of the Land Use Division is to ensure the use of land within the Central Pine Barrens area conforms to New York State Environmental Conservation Law (ECL) Article 57 and the Central Pine Barrens Commission's Comprehensive Land Use Plan and to guide its development. The division provides both long range and current planning on a regional basis for the Central Pine Barrens area. Other services the division provides are:

- Review and processing of Commission permit applications.
- Review of town and other agency land use management plans for conformance to NYS ECL Article 57 and the Comprehensive Land Use Plan.
- Prepare State Environmental Review Act (SEQRA) documents and perform SEQRA coordination with other agencies.
- Research and draft land use policy to guide the Commission.
- Provide recommendations to Commission councils, the Advisory Committee, and the towns on land use matters and policy under the Commission's purview.
- Support the Compliance and Enforcement Division with the investigation of land use incidents and violations, and the monitoring and review of Commission permit conditions, and conservation easements for conformance.
- Serve as the liaison to the public and government agencies on inquiries related to land use and development in the Central Pine Barrens and jurisdictional inquiries.
- Prepare Comprehensive Land Use Plan amendments.
- Communicate and meet with applicants.
- Prepare materials including staff reports and exhibits for public hearings on hardship waiver applications.



- Follow-up on compliance with the conditions of approval for permits granted by the Commission, filing requirements, and restoration activities.
- Perform field inspections of project sites and post-construction site inspections.
- Track pending projects, referrals, and litigation.
- Update the Commission website with land use development information, status of applications, and project statistics.

### In 2017, Commission Land Use Division Staff

Reviewed development projects in the Central Pine Barrens Area for compliance with ECL Article 57 and the Commission’s Comprehensive Land Use Plan (the “Plan”) by:

- Providing comments on SEQRA coordination referrals received from the three towns in the Central Pine Barrens (Brookhaven, Riverhead, and Southampton), Suffolk County, and State agencies. In 2017, approximately 25 referral applications were received.
- Reviewing town code amendments and land use plans for conformity to NYS ECL Article 57 and the Plan.
- Responding to daily inquiries and requests for information related to land use, planning, and development matters in the Central Pine Barrens.
- Performing site inspections to confirm compliance with conditional decisions granted by the Commission.
- Drafting the Supplemental Draft Generic Environmental Impact Statement for the Comprehensive Land Use Plan amendments in accordance with the final scope.
- Continued to update the Commission website with development application information, decisions, and statistics.
- Reviewed Requests for Determination of Jurisdiction for the Commission.

#### Requests for Determination of Jurisdiction (in the Core, unless otherwise noted):

- 1370 Quogue Riverhead Road, Westhampton
- 60 Old River Road, Manorville
- 7 Eleven Coram, Coram (CGA)
- ARINC, New Cingular Wireless (AT&T) and Metro PCS
- Jeni Kreiger, Manorville
- Linus Pond in Otis Pike Preserve, Manorville

- Maggie King, Calverton
  - Nancy Roesler, Ridge
  - New Cingular Wireless PCS LLC (AT&T), Manorville
  - Paul DiLandro, East Quogue
  - Peconic River Sportsman’s Club, Calverton
  - Quogue Wildlife Refuge, Quogue
  - Robert Seifert, Manorville
  - SAS Industries, Calverton
  - Stony Brook Center for Clean Water Technology, Yaphank and Manorville
  - Tough Mudder at Southaven County Park, Yaphank
  - William Ebert, Manorville
  - Brian Klug, Northampton
  - Barnett property, Ridge (CGA)
- Reviewed applications for hardship waiver exemptions, prepared staff reports, SEQRA documentation, and drafted decisions for the following projects that were under review by the Commission:

Compatible Growth Area Applications:

- Bluewater Development, Calverton
- Shwonik/Guyder Farm (Fink’s Farm), Wading River
- R.N. Middle Island (7 Eleven Middle Island)

Core Preservation Area Applications:

- Starbucks, Manorville
- Independent Group Home Living, Manorville

The table below depicts the number of decisions made by the Commission on development projects in the Core Preservation Area and Compatible Growth Area from 1993 through 2017. Projects that are reviewed by the Commission must be considered development as defined in the NYS Environmental Conservation Law Article 57 (NYS ECL Article 57), and for projects in the Compatible Growth Area involve either a hardship waiver request from development standards contained in its Comprehensive Land Use Plan or require a decision by the Commission because the project was a development of regional significance, in a critical resource area or the Commission asserted its jurisdiction over the project pursuant to NYS ECL Article 57. Development projects in the Core Preservation Area require a hardship waiver from the Commission either based on extraordinary hardship or compelling public need as identified in NYS ECL Article 57.

<b>Pine Barrens Commission Development Project Decisions 1993 through 2017</b>									
Year	Core Preservation Area			Compatible Growth Area			Central Pine Barrens		
	Approvals	Disapprovals	Decisions	Approvals	Disapprovals	Decisions	Approvals	Disapprovals	Decisions
1993	0	0	0	0	0	0	0	0	0
1994	6	2	8	6	1	7	12	3	15
1995	7	4	11	12	2	14	19	6	25
1996	7	2	9	9	0	9	16	2	18
1997	8	1	9	0	0	0	8	1	9
1998	3	1	4	3	0	3	6	1	7
1999	3	2	5	3	0	3	6	2	8
2000	1	1	2	0	0	0	1	1	2
2001	7	1	8	1	0	1	8	1	9
2002	4	2	6	0	1	1	4	3	7
2003	2	1	3	2	0	2	4	1	5
2004	1	0	1	4	0	4	5	0	5
2005	3	0	3	6	2	8	9	2	11
2006	1	0	1	4	0	4	5	0	5
2007	0	0	0	3	1	4	3	1	4
2008	1	0	1	0	1	1	1	1	2
2009	0	0	0	0	0	0	0	0	0
2010	2	1	3	1	0	1	3	1	4
2011	1	1	2	3	1	4	4	2	6
2012	1	0	1	2	0	2	3	0	3
2013	0	0	0	1	0	1	1	0	1
2014	0	2	2	1	0	1	1	2	3
2015	1	1	2	0	0	0	1	1	2
2016	1	4	5	1	0	1	2	4	6
2017	1	2	3	3	0	3	4	2	6
<b>Total</b>	<b>61</b>	<b>28</b>	<b>89</b>	<b>65</b>	<b>9</b>	<b>74</b>	<b>126</b>	<b>37</b>	<b>163</b>



## Science and Stewardship Division

Ann Carter, Science & Stewardship Coordinator

Polly Weigand, Ecologist

The Science and Stewardship Division supports the Commission's mission to protect and restore natural, historic, cultural, water and scenic resources, and enhance public access and enjoyment of these resources in the Central Pine Barrens region while promoting scientific research as envisioned in New York State Environmental Conservation Law (ECL) Article 57 and the Central Pine Barrens Comprehensive Land Use Plan. The Division is supported by a science and stewardship coordinator, ecologist and seasonal interns.

The division works closely with public landowners within the multi-jurisdictional Central Pine Barrens area on stewardship initiatives involving:

- Cultural, historic, and scenic resource protection and restoration.
- Ecological research, monitoring, protection and restoration.
- Land use management and protection.
- Fire management planning.
- Natural resource protection and management.
- Open space management.
- Public use and recreational resource planning and management.

In addition the division:

- Provides overall support to the Commission's Protected Lands Council and its stewardship initiatives.
- Contributes support to the Law Enforcement Council and other Commission committees.
- Provides cartographic and data information and analysis services for the Commission.
- Provides support to the other Commission divisions on stewardship matters related to development projects, agency land management plans and land use incident investigations and enforcement actions.

### Science and Stewardship Division Activities and Programs that occurred in 2017:

#### Ecosystem Health and Protection

The Commission continues to work collaboratively with scientists, agencies, and other professionals to monitor and keep abreast of potential human related and natural threats to the diverse forest, grassland and wetland ecosystems within the Central Pine Barrens region. The division strives to ensure maximal ecosystem health and function, high species diversity, and superior water quality within the Central Pine Barrens area through the implementation of the following science and stewardship programs and initiatives that were carried out in 2017.



## Administration

The Division hired five seasonal interns to assist with southern pine beetle, invasive species, and other stewardship work, including trail maintenance in 2017 that was carried out across hundreds of acres of publicly owned land in the Central Pine Barrens.

## Protected Lands Council

The Protected Lands Council (PLC) is an association of agencies, organizations and individuals who share a common interest in advancing the protection, preservation and restoration of natural, cultural, and scenic resources in the Central Pine Barrens region, while promoting compatible public use and enjoyment of these protected lands to ensure their essential value and integrity are preserved for the public trust, present and future. Under the direction of the Commission, the PLC's stewardship work is focused on well over 60,000 acres of public lands in the Central Pine Barrens and covers a broad array of topics including, but not limited to, habitat protection, ecology, restoration of historic structures, trails, and recreational uses, park planning and damage caused by illegal ATV use and dumping. Since its establishment by the Central Pine Barrens Comprehensive Land Use Plan, the PLC's focus, meeting frequency, and structure have evolved. The PLC holds periodic meetings during the year at various locations across the Central Pine Barrens, with additional field work sessions scheduled as needed.



The PLC's current chair is Tom Casey from the Long Island Greenbelt Trail Conference (LIGTC) and the vice chair is John Wernet from the NYS Department of Environmental Conservation (NYSDEC). These positions are appointed by the Commission and the PLC's work is supported by the division's staff. Meetings were held in May, October, and December with roundtable discussions on the Arbor Day tree planting event in Hampton Bays, recent public acquisitions, water quality monitoring, trail maintenance, southern pine beetle infestation and suppression, recent successful enforcement actions against illegal ATVs, 4x4s, and dumping, and other public land management issues. NYSDEC Forester John Wernet also provided a presentation on the identification and status of oak wilt disease on Long Island with much needed recommendations to land managers.

## Commission Sawyer Crew

A team of trained and certified sawyers has been developed by the Commission and Suffolk County Water Authority (SCWA) to directly support southern pine beetle suppression and grassland succession as well to assist with trail maintenance. The new Compliance and Enforcement Division staff participated in saw training coordinated by division staff through the

NYSDEC and CPR, first aid training and additional field trainings to ensure the safe and effective use of the saws by crew members. Saw related gear was purchased under a SPB grant obtained in 2016 to support this crew. In addition, active SPB suppression activities were conducted in Henry's Hollow State Forest, Southaven County Park, and on SCWA properties as well as suppression of woody succession occurring in the Pine Meadow County Park grassland.

### Aerial Monitoring and Ground Support Program

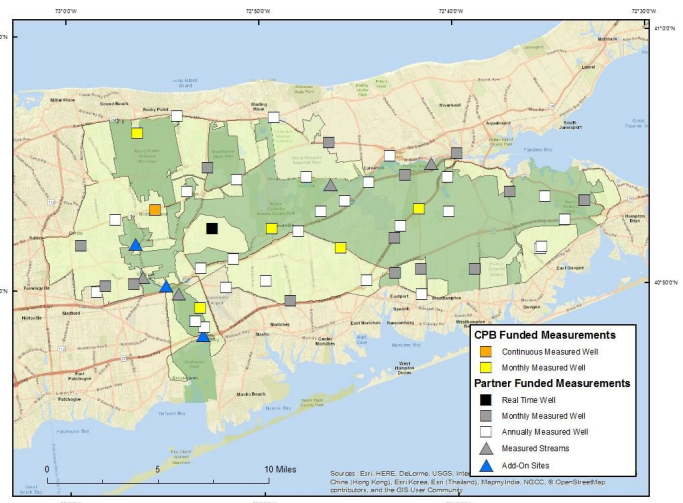
In 2017, the Commission renewed a long standing Memorandum of Understanding (MOU) with the New York Wing of the Civil Air Patrol (CAP) which continues to greatly assist the Commission with carrying out its stewardship programs. The CAP is a volunteer civilian auxiliary of the United States Air Force and is also a member of the Commission's Law Enforcement Council (LEC). The MOU enables CAP to assist the Commission and the LEC by conducting aerial missions such as reconnaissance to search for victims, to perform environmental damage assessment surveys utilizing visual photographic, digital and video techniques; provide airborne communications support and perform airlifts (subject to certain restrictions identified in the MOU). In addition, CAP can provide manual labor (e.g. filling sandbags for flood control), radio communications and ground teams (typically used in search and rescue missions).



Commission staff participated in an aerial reconnaissance mission in May 2017 to document existing land conditions; perform smoke spotting; inventory agricultural land use; identify the location of dump sites, abandoned vehicles and ATV damage; and to perform ecosystem monitoring. Findings from this mission helped inform and prioritize the Commission activities related to restoration and stewardship.

### USGS Comprehensive Water Resources Monitoring Program

The Commission has entered into a formal cooperative agreement with the US Geological Survey (USGS) to conduct a comprehensive water resources monitoring program for the Central Pine Barrens. The goal of this five year monitoring program is to obtain a better understanding of natural and human influences on surface and ground water quality in the Central Pine Barrens, in addition to identifying potential threats and monitor-



ing the influence of management on these systems.

The monitoring data will be used to:

- maintain a publically accessible database of groundwater levels, stream discharges and water quality results;
- provide a comprehensive baseline of water resource conditions against which future hydrologic changes can be compared;
- identify potential areas of eco-hydrologic concern that may result from encroaching development or stressors with in the Central Pine Barrens.

This monitoring program also complements and strengthens other water monitoring programs currently being conducted by the SCWA, Suffolk County Department of Health Services and the NYSDEC with the USGS.

The monitoring program currently supported with funding from the Commission and the Town of Brookhaven includes the parameters listed below.

Groundwater Levels :

5 upper glacial aquifer wells (monthly from annual)  
Carmans River Continuous Water level Recorder

Water Quality:

Surface Water Sampling (nutrient, major inorganic constituents, alkalinity, organic contaminant, physical parameters, stream discharge)

- Peconic River - 2 locations sampled - 2x/year (Spring and Fall)
- Carmans River -5 locations sampled - 4x/year (Seasonally) (3 of the 5 locations are funded by Town of Brookhaven and 2 by the Commission)

Groundwater Sampling (nutrients, major inorganic constituents, alkalinity, pesticides and contaminants of emerging concern)

- 10 upper glacial observation wells in (rotating sampling schedule)
- 20 upper glacial or Magothy observation wells (rotating sampling schedule)

Under this agreement, hydrologic conditions and water quality data are being collected and analyzed and published for public review at the project website (<http://ny.water.usgs.gov>) hosted by the USGS New York Water Science Center. An annual data summary will also be provided to the Commission at annual meetings and updates provided via quarterly meetings. At the conclusion of the 5 year agreement, the data and assessments will be compiled and shared publically within an online USGS interpretive report(s).

## Emerging Issues

### Southern Pine Beetle

Significant pitch pine mortality, caused by an outbreak of southern pine beetle (SPB), the most destructive bark beetle in southeast United States, was discovered on Long Island in 2014. Coordinated response efforts including planning and management work are detailed below and continue to be in the forefront of the Commission's work in 2017.

#### *Recognition:*

A highlight of 2017 was the recognition of the collaborative efforts advanced by the New York Southern Pine Beetle Management Team which included the Commission as well as all of the partners listed below as part of the SPB Incident Command team. Both an Honor Award from the US Forest Service (USFS) Eastern Region Northeastern Area and also an honorable mention under the USFS Chief's Honor Awards in 2017 were received for the rapid and collaborative response to SPB infestation since its detection in 2014.



#### *SPB Incident Command System (ICS):*

The incident command system is a multi-agency SPB response that continues to be managed through ICS. Participants include NYSDEC, USFS, US Fish & Wildlife Service (USFWS), Cornell University's Long Island Horticultural Research and Extension Center (LIHREC), Cooperative Extension of Suffolk County (CCE), NYS Office of Parks, Recreation, and Historic Preservation (NYSOPRHP), Suffolk County Department of Parks and Recreation (SCParks), National Park Service (NPS), Town of Southampton (TOS), Town of Brookhaven (TOB), prominent SPB scientists and others. In May 2017, the Commission provided leadership direction to the restoration response for SPB with the appointment of Ms. Weigand, Commission Ecologist, as the Director of the Restoration Branch within the SPB ICS.

The Commission participated in numerous meetings, including monthly conference calls with NYSDEC Region 1 and Forest Health Staff, a SC Parks Operations Meeting, and a USFS Management and Research Evaluation Meeting. Collaborations and technical assistance also continued under a Memorandum of Understanding between the Town of Southampton and the Commission which created a town-specific Southern Pine Beetle Task Force in order to increase local response to the outbreak. In the spring of 2017, division staff surveyed and flagged 36 SPB-affected trees in the Canoe Place area of Hampton Bays for the TOS which also facilitated immediate implementation of cut and remove suppression of SPB-infested and hazard trees.



### Commission SPB Grant:

The \$50,000 SPB grant provided to the Commission by NYS Legislature to aid the Commission in its response efforts concluded in 2017. The funds facilitated the hiring of four of the seven interns used for SPB work, helped to purchase field equipment, safety gear and supplies to outfit Commission staff and partner agencies for SPB monitoring (ground-truthing and trapping), perform suppression work, host the SPB research and management symposium, perform forest restoration and develop educational material development.

### Aerial Reconnaissance:

The photos obtained during Commission aerial reconnaissance have been highly valuable and used in concert with the NYSDEC Forest Health Unit's periodic aerial detection flights. Using both sets of imagery provided additional views of potential SPB infestations; allowing for increased efficiency in locating and surveying of potential SPB infestations as well as oak wilt and other insects and diseases.

### Ground Surveys and Suppression:

Commission staff supported ground-truthing for SPB in a number of ways to help detect and map outbreaks for suppression and hazard mitigation. Two staff trainings on SPB identification and surveying were conducted. A Commission led training for TOS and contract arborists and a second NYSDEC/Commission training was hosted for Commission staff (including interns), TOS, TOB and SCParks.



Commission staff participated in NYSDEC ground surveys throughout 2017 as a follow-up to NYSDEC aerial detection surveys as noted in Table 1 below for seven parks or state forests. Infestations were located, evaluated and mapped through the analysis of aerial photographs, production of maps for infested areas and staff also participated in the development of response plans. The resulting inventories were used to guide agency planning efforts and suppression cutting of priority active infestations on BNL, NYSDEC, SCParks, TOS, TOB, and Town of Riverhead (TOR) lands.

Table 1: SPB Survey Locations and Suppression Status by Parkland or State Forest.

Ground Survey Location	Date of Survey	Suppression Conducted
Sears Bellows County Park	Winter 2017	Yes
Dwarf Pine Plains	Spring 2017	No infested trees detected
Hubbard County Park	Summer 2017	Yes, majority of infestation
Manorville Hills County Park		Yes
West of Henry's Hollow State Forest		No
Robert Cushman Murphy		No, <10 tree infestations
Sarnoff Preserve		No, < 10 tree infestations

*Direct Suppression and Commission Sawyer Crew:*

Surveying by Commission staff helped advance rapid suppression response at locations noted in Table 1 by the NYSDEC sawyer crews that were also assisted by Commission sawyers.

*SPB Community Recovery Grants:*

Table 2: 2017 Southern Pine Beetle Community Recovery Grant Status by Agency

Municipality	Location	Contract Allocation	Objective	Contract Executed	Status
Town of Brookhaven	SC Tax Map #'s 462-3-33.19; 462-3-33.14; & 560-4-7.16	\$37,000	Suppression and Invasive Species Removal	Spring 2017	Surveying and Suppression Summer
Suffolk County Dept. of Parks and Recreation	Southaven CP	\$75,000	Suppression and Hazard Tree Removal	Summer 2017	Surveying 2017 and Suppression
	Lakeland CP	\$75,000	Hazard Tree Removal		
	Sears Bellows CP	\$75,000	Suppression and Hazard Tree Removal		
Town of Southampton	Parks Dept.	\$75,000	Hazard Tree Removal	Spring 2017	Surveying and Hazard Tree Removal
	Highway Dept.	\$75,000	Hazard Tree Removal		
	Conservation Protection Fund	\$75,000	Suppression and Hazard Tree Removal		

Technical support continued to be provided by Commission staff to the TOB, TOS and SCParks related to NY State's SPB Community Recovery grant awards noted in Table 2 to aid in suppression, hazard tree removal, and restoration.

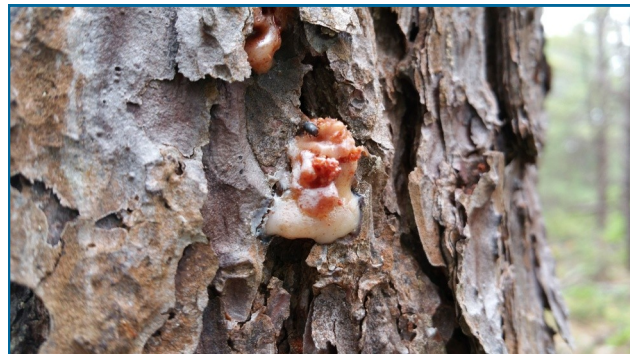
In the fall of 2017, the Commission loaned to SCParks SPB field surveying gear to help their staff inventory SPB impacted areas in County parklands and to identify areas in need of suppression and hazard tree removal as part of their SPB Community Recovery Grant.

*SPB Trapping:*

In collaboration with Cornell Cooperative Extension of Suffolk County (CCE) and the NYSDEC Forest Health Unit, the Commission conducted weekly SPB trapping from March 2016 through December 2017. This long term, year round monitoring provides a trend analysis of SPB response locally as well as the response of Checkered (*Thanasimus dubius*) and Turpentine (*Dendroctonus terebrans*) beetles

to the SPB. Baited with frontalin (a SPB pheromone) and alpha pinene lures, the Lindgren funnel traps were located and monitored in the eastern section of the Central Pine Barrens at three locations: Eastport Conservation Area in Eastport, Hubbard County Park in Hampton Bays, and Spinney Road in East Quogue.

The *2016 SPB Summary Report* was released in the spring of 2017 documenting Southern Pine Beetle, Checkered Beetle (a predator of SPB) and Turpentine beetle activity and trends. The 2017 study will be compiled in an annual report and the final data will continue to be archived in a centralized SPB data repository managed by the US Forest Service (USFS) where the data sets will be available for use by scientists who are anxious to conduct research on the atypical behavior of SPB and to provide other valuable information needed to manage SPB in its expanded range in the Northeast. Copies of the report can be found on the Commission's website <https://pb.state.ny.us>.

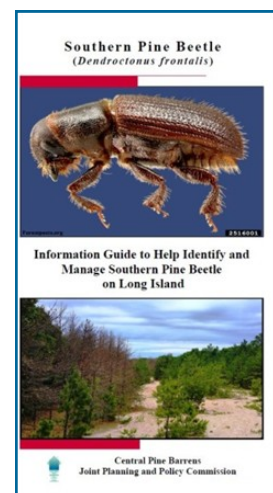


In spring of 2017, the SPBs collected from 2016 trap catch were provided to Dr. Brian Sullivan, Research Entomologist from the USFS Southern Research Station in Pineville, Louisiana to support additional studies such as to determine if the SPB is evolving morphologically with range expansion. Additionally, in 2017 a subsample of SPBs by site were provided to Nathan Havill, USFS Research Entomologist, Northern Research Station Connecticut who will conduct genetic testing on SPBs to help determine origin and lineage in the northeast.

The Commission also aided USFS and NYSDEC in checking Ips beetle traps at the Rocky Point Demonstration Forest.

### *Education and Outreach:*

Numerous programs, updates and trainings on SPB status, identification and management were presented at such venues as the Long Island Agricultural Forum and the Commission's Wildfire Task Force. SPB educational displays were also developed and presented at the Northeast Research and Management Forum, Long Island Natural History Conference, Long Island Invasive Species Management Area Invasive Species Conference, Oak Wilt Symposium, and Long Island Native Plant Conference. These table top displays highlighted signs, symptoms and stages of SPB infestation and included Southern Pine, Turpentine, and Checkered beetle specimens, bark and cross sections of infested trees highlighting bore holes, galleries and blue stain fungus as well as photos of trees in various stages of infestation. Four copies of the display were created and distributed to the Town of Southampton, Quogue Wildlife Refuge, Cornell Cooperative Extension of Suffolk County, with one retained for use by the Commission.





Three educational brochures were published to help increase identification, awareness, detection and proper response to SPB by the public:

- *Southern Pine Beetle (Dendroctonus frontalis) Information Guide to Help Identify and Manage Southern Pine Beetle on Long Island*
- *Southern Pine Beetle (Dendroctonus frontalis) Affected Tree Handling and Disposal Decision Tree for the Suburban Landscape*
- *Southern Pine Beetle Online Resources*



The *Southern Pine Beetle in the Northeast Research and Management Forum* was held on March 8 and 9, 2017, coordinated by the Commission and hosted at Brookhaven National Lab in collaboration with NYSDEC, USFS, NPS, USFWS, BNL, CCE, and NYSOPRHP. Speakers included researchers and land managers from the US Forest Service stationed in New Hampshire, North Carolina, Texas, and Louisiana; NYSDEC (Albany); Pine Creek Forestry, New Jersey; University of Arkansas; University of Vermont; and Dartmouth College, New Hampshire.

Over 188 attendees heard presentations and panel discussions and received in the field exposure to advancing and applied research on Southern Pine Beetle biology and behavior, predator and parasitoid response, suppression, forest health, monitoring, and local response to this new forest pest. The entire two day SPB Forum was offered free of charge thanks to funding provided by the New York State Legislature through the Environmental Protection Fund.

*Restoration:*

### *Restoration:*

As Restoration Branch Director of ICS, the Commission's Ecologist provided native plant lists for SPB-impacted area restorations to the NYSDEC which in turn were provided to recipients of SPB Community Recovery Grants as well as to aid in post-suppression efforts. The Restoration Branch Director met with the SPB Operations Chief to discuss restoration activities for the fall of 2017 and beyond.



In response to SPB infestation, the PLC lead two restoration events to help ensure the Pitch pine remains a dominant tree of the Central Pine Barrens. A Pitch pine forest restoration planting was held at Sears Bellows County Park on April

20, 2017 with over twenty volunteers planting 250 trees to reforest a heavily impacted area. The seedlings were grown at the NYSDEC Saratoga Tree Nursery from seeds harvested across the Central Pine Barrens over the past several years.

In the fall, a pine cone collection event was held at Indian Island County Park with cones collected from SPB affected trees. Both serotinous and non-serotinous cones were collected to maximize genetic variability and adaptability. Seed collection protocols utilized by LINPI and Mid-Atlantic Regional Seed Bank (MARS-B) were applied to cone collection to limit the impact to the seed bank and wildlife. These protocols are particularly important especially when collecting from southern pine beetle suppression sites since cones collected from felled Pitch pine trees are the last that will be produced by these individuals. Harvested cones were provided to the NYSDEC Saratoga Tree Nursery for future seedling production to provide genetically native tree seedlings for restoration of SPB affected forests.



### Oak Wilt

In 2017, the Commission focused on assisting with early detection of and rapid response to this serious oak tree disease, especially the red oak group, which was discovered just west of Connetquot State Park in 2016 with additional infections confirmed between Brooklyn and Orient Point in 2017. Due to the increased detections of oak wilt across the region, the NYSDEC Commissioner declared an Emergency Order establishing a “Protective Zone” that includes all of Suffolk County to help prevent the unintentional spread to other areas of NY State and surrounding states.

### *Oak Wilt Incident Command System and Task Force:*

Response to oak wilt continues to be managed through the incident command system headed up by the NYSDEC with the Commission as a member of the Oak Wilt Task Force. Task Force meetings were hosted by NYSDEC Forest Health Program, NYS Agriculture and Markets, Cornell Cooperative Extension of Suffolk County and Cornell University and occurred in January at the Long Island Research and Extension Center in Riverhead and Islip and in spring at the Bayard Cutting Arboretum in Oakdale.

### *Monitoring and Training:*

An Oak Wilt Identification training coordinated by the Commission and presented by NYSDEC was held on June 29<sup>th</sup> to help increase the identification and reporting of potential oak wilt infestations within the Central Pine Barrens that was also attended by staff from the Commission TOS, TOB, SCParks and NYSDEC. Commission staff also participated in numerous webinars on oak wilt including one hosted by the NYS PRISM. Commission staff aided in the early detec-

tion and rapid response to oak wilt by reporting numerous oaks exhibiting symptoms of oak wilt to NYSDEC who in turn provided further inspection and sampling. In addition, emails and calls from the public were addressed or referred to NYSDEC. The division also provided assistance to NYSDEC with Nitidulid beetle trap checks at Connetquot State Park to determine the species of Nitidulid beetles occurring there and to evaluate efficacy of different trapping methods in capturing these species of Nitidulid beetles in order to support future monitoring locally. This trapping is very important for understanding pathways of oak wilt transmission by these beetles which are a vector for oak wilt.

#### *Outreach:*

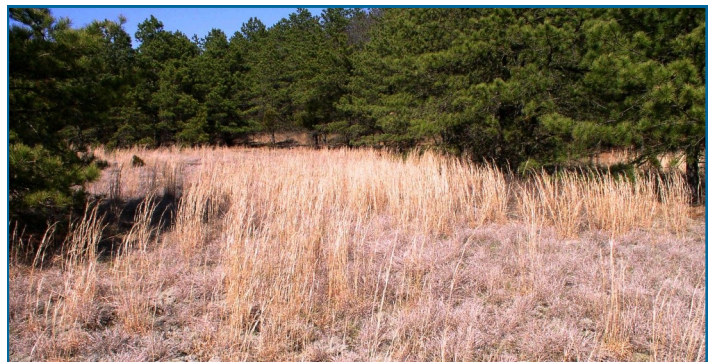
An Oak Wilt Symposium coordinated by Cornell University, CCE, NYSDEC and the Commission was held on October 25, 2017 at Brookhaven National Lab. This one day event hosted researchers from Minnesota and Cornell University and NYSDEC to gather expertise from the Midwest and Mid-Atlantic regions to assist Long Island in moving from panic to thoughtful and effective action as we begin to deal with oak wilt. The 75 person audience included nurserymen, landscapers, arborists, agencies, town governments, utility managers, and gardeners that were provided with a comprehensive perspective on this topic, in addition to signs and symptoms of oak wilt and best management practices for preventing and responding to this disease.

#### *Ecosystem Management Planning and Restoration*

##### *Land Use Ecological Services Contract:*

Numerous planning and permitting milestones were achieved in 2017 under the Land Use Ecological Services (LUES) Contract for Sarnoff State Forest (Sarnoff), Rocky Point Pine Barrens State Forest (Rocky Point), Eastport Conservation Area (Eastport) and Pine Meadows County Park (Pine Meadows).

Draft restoration plans for Rocky Point, Eastport and Pine Meadows were reviewed and prioritized during a February meeting at the Commission office with SCParks, Commission, NYSDEC and LUES and periodically thereafter throughout the year. The Commission conducted extensive environmental quality reviews for these projects under the NYS Environmental Quality Review Act (SEQRA) and adopted negative declarations, finding no significant environmental impact for Rocky Point and Eastport/Pine Meadows restoration plans. LUES, with Commission representation, presented to the Suffolk County's Pesticide Citizens Advisory Council where a one year herbicide exemption for the control of challenging invasive plant species on County parklands was granted. To determine the response to





management, LUES developed and implemented pre- and post management grassland monitoring protocols in consultation with division staff for the Eastport and Pine Meadows grasslands. Commission, LUES and Sustainable Solutions (SS) staff met with Rocky Point, Ridge and Eastport Fire Departments to provide an overview of the proposed management plans and to obtain recommendations related to operations and prescribed fire burn plan development which were well received by the fire departments and fire district representatives. In the Sarnoff Preserve, planning was focused on determining the best management treatment reflective of the wildland urban interface, removal of debris piles and the installation of access to the northwestern section of the preserve. Prescribed burn plan development and contract extension planning were the primary focus for the fall and winter by LUES and division staff.

### *Prescribed Fire:*

The Central Pine Barrens is a fire adapted ecosystem which depends on periodic fire to maintain ecosystem health, maximize habitat and species diversity while reducing wildfire risk. The numerous adaptations to fire exhibited in the Pitch pine include thick plated bark, loss of lower branches, epicormic buds, and serotinous cones which insulate the vascular system from heat, reduce the potential for crown fire, ensure ready regeneration of needles for the production of nutrients and advance the next generation through seed dispersal post fire.



Fire modifies the ecosystem by retrogressing succession, cycling nutrients, exposing minerals soils, and reducing pests and disease. Due to the large wildland urban interface area, wildfire suppression is common practice in order to protect the public, their homes, businesses and communities from devastating loss associated with uncontrolled ignitions. Unfortunately, this long term culture of fire suppression and lack of active management has inadvertently resulted in a higher wildfire risk due to the accumulation of high fuel loads, degraded ecosystem health, and increased disease and pest pressures within the Central Pine Barrens.

The Commission actively supports and encourages the implementation of prescribed fire, being a cost effective and ecologically appropriate management practice that helps achieve ecological objectives while reducing wildfire concerns. The Division readily expanded its prescribed fire initiatives through planning, education, training and implementation as noted below.

### *Prescribed Fire Implementation and Training:*

In preparation for the fire season, Commission staff completed the required S130/190 refresher and pack tests that allow the participation on all regional prescribed fires. Division staff also participated in a sprinkler training/orientation prior to the first growing season, understory

prescribed fires burn that occurred on Brookhaven National Lab property with the NYS Forest Rangers. Approximately 200 acres of grasslands and 30 acres of Pitch pine-Oak woodlands were both notable achievements in 2017 as the highest acreage treated with prescribed fire in New York State and the first understory, growing season burn conducted on Long Island in over 10 years.

#### *North Atlantic Fire Science Exchange (NAFSE):*

The Commission, BNL and NYSDEC have become active participants on the North Atlantic Fire Science Exchange (NAFSE), a regional network affiliate of experts specializing in fire research, application and management across the United States. NAFSE serves as a platform to encourage “communication between scientists and land managers to ensure access to current research, development of innovative solutions for the region’s unique research and management challenges, and identification of research needs while balancing public safety, economic realities and sustainable ecosystems.”



In 2017, the Division along with Brookhaven National Lab and NYSDEC hosted the first NAFSE program on Long Island, a two day fire management workshop entitled “*Keeping the Pine in the Pine Barrens*” that occurred on May 3 and May 4, 2017 at BNL in Upton, NY with approximately 30 attendees. The workshop focused on the importance of using prescribed fire to maintain diversity, function and persistence of Pine Barrens ecological communities, to promote healthy and resilient forests, reduce fuel hazards and to manage southern pine beetle infestations in the Central Pine Barrens. Fire experts, pine barren researchers, representatives from Albany Pine Bush, and regional fire departments joined local land managers for in depth, scientific and comprehensive discussions.

#### *The Forest Stewards Guild - Fire Adapted Communities Exchange:*



The Forests Stewards Guild’s mission is to advance forestry practices that are “economically, ecologically and socially responsible as a standard for professional forest management, coast to coast”. The Guild provides educational programming and training to support stewardship and to support foresters and other professionals, and the public to address challenges in forest conservation and management.

The Guild is assisting with the coordination and funding of a fire adapted communities exchange between Long Island and New Jersey that is focused on the management and protection of pine barren ecosystems. Two workshops will be held in the spring of 2018 at each location.



### Invasive Species:

The widely recognized definition of an invasive species is “a species that is non-native (or alien) to the ecosystem under consideration and whose introduction causes or is likely to cause economic or environmental harm or harm to human health”. Invasive species are recognized as the leading cause of loss of biodiversity next to development. The Commission is involved in the following partnerships and educational programs to control and limit the spread of invasive species.



### *Long Island Invasive Species Management Area (LIISMA):*

The Division staff is an active partner of LIISMA, the local Partnership for Regional Invasive Species Management (PRISM) which is a voluntary partnership of over 50 organizations from Richmond, Kings, Queens, Nassau and Suffolk Counties. Through collaborative efforts, information sharing related to invasive species education and management is advanced on prevention, early detection and rapid response, mapping, training, and prioritization and planning. Commission staff participated in the NYS PRISM monthly conference calls and webinars and continues to be an active partner within LIISMA by participating in partner meetings that were held on April 18<sup>th</sup> at Nassau County Soil and Water Conservation District in Syosset, NY and November 7<sup>th</sup> in Brentwood, NY.

### *Education/Outreach and Training:*

The Commission served on the LIISMA Conference Coordination Committee which successfully hosted the 1<sup>st</sup> LIISMA -Long Island Invasive Species Conference on June 22, 2017 at the Sisters of St. Joseph Brentwood, NY. Over 150 people attended this event with many relevant topics on preventing and addressing invasives within the Central Pine Barrens, including the identification of new and emerging invasives. Division staff volunteered at the conference and hosted a southern pine beetle display for the event.

Division staff attended a LIISMA IMAP invasive training on June 23, 2017 at Connetquot State Park. Mapping and data entry techniques for documenting emerging and established invasive species populations for purposes of future planning and monitoring was an integral part of this training. Division staff both participated and hosted the training with Polly Weigand providing a training on invasive plant identification.

### *Early Detection, Rapid Response:*

Early detection and rapid response is a method of addressing new and emerging non-native species or species newly encroaching into a habitat of concern. The Commission surveys regularly for a diversity of non-native species and monitors rare ecosystems within the Central Pine Barrens.

The only documented extant population of Caper spurge (*Euphorbia lathyris*) on Long Island was detected as part of SPB surveying in East Quogue in 2016. In 2017, Commission staff hand pulled 10 large garbage bags of the spurge; an effort which is critically important to eradicate this species from this location and to prevent potential population expansion and spread within the Central Pine Barrens and across Long Island. Follow up monitoring in the coming years with additional hand pulling will continue to help ensure eradication.



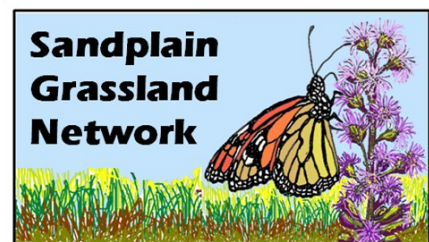
Common Reed (*Phragmites australis*) populations were mapped for the globally rare coastal plain pond shorelines of Robert Cushman Murphy County Park to plan control actions for emerging populations in the event that invasive species eradication funding is made available in the future. A research permit was authorized by SCParks and Commission staff reached out to LUES, the New York Natural Heritage Program and SCParks to prioritize and plan the mapping of select water bodies.



### *Sandplain Grassland Network:*

The Commission serves on the Sandplain Grassland Network Habitat committee which is developing wide scale management to condense regional grassland research in order to advance restoration and management actions reflective of previous land uses and current levels of rarity, diversity and species compositions. Towards this effort, division staff drafted the New York Island's grassland history, assisted in the development of the Conversion from Agriculture report and edited the mowing sections of this larger report as well as attended monthly conference calls and traveled to Massachusetts for a coordination meeting.

The Sand Plain Grassland Network is a larger regional effort to coordinate grassland management and research within the Northeast from Long Island to Maine. Since we are losing more grasslands than any other habitat due to development, conversion to agriculture, invasive species encroachment, and natural succession, this effort is integral to effectively manage and protect the grasslands of the region.



## Trail Development and Maintenance

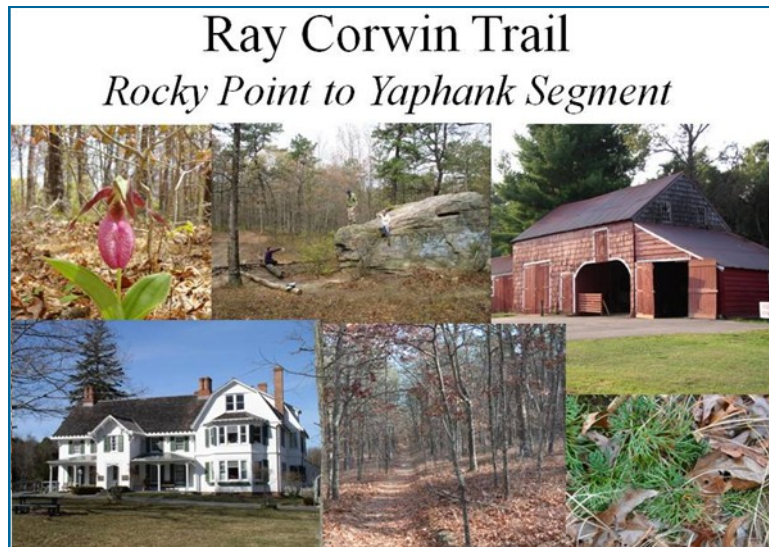
### *Ray Corwin Hiking Trail Rocky Point to Yaphank Trail:*

The Commission continues to coordinate the development of the Ray Corwin Hiking Trail; a 12.5 mile regional trail which travels from Route 25A in Rocky Point to Main Street in Yaphank along existing open paths and woods roads. The trail also includes several spurs and potential future connections to points south for use by hikers and equestrians. Upon completion, this section of the trail will be named in memory of the first executive director of the Central Pine Barrens Commission, Ray Corwin, who passed away in 2010. Partners included in the planning and development of the trail include the PLC, LIGBTC, NYSDEC, SC Parks, TOB, NYS DOT and other agencies and user groups.

This year many notable milestones were accomplished that will help finalize the trail in 2018. The Commission conducted field meetings with SCParks, TOB and SCWA to coordinate trail marking specifications, maintenance activities and to discuss any necessary access agreements on respective holdings. Debris, vegetation and trash removal was conducted along various sections of the trail and a section of the trail was rerouted to an existing trail between Turtle Rock and Smith Road to reduce trail maintenance activities.

The LIGBTC blazed and maintained over 10 miles of the trail while other sections of the trail were digitized through the strides of a NYSDEC summer intern. NYSDEC celebrated the completion of the two parking areas at the Lustgarten Trailhead on NYS Route 25 at the formal Lustgarten Nursery and at the Rocky Point Preserve Demonstration Forest. Educational signage was also installed along this trail system to inform the public of the various activities being implemented in the demonstration forest related to management, forest health and Southern Pine Beetle resilience. Boundary signs were installed in Suffolk County parklands where severe encroachment along the trail route was documented. Mitigation of the ATV and dumping in the trail corridor occurred with the installation of a sturdy gate and boulders at the south end of the historic Smith Cart Path to block illegal access.

Finally the season's efforts were celebrated by the LIGBTC that led a well attended hike on October 22, 2017 from Woodlots Road in Rocky Point to Main Street in Yaphank. Turtle Rock was just one of the many spectacular highlights along the trail. The increasing popularity of the trail is expected to help curtail illegal ATV use and dumping in the trail corridor.





### Dwarf Pine Plains Trail

Established in 2007, the Dwarf Pine Plains Trail is a 0.6 mile loop trail that begins at the Commission office in Westhampton, and traverses this rare and fascinating ecological community. The trail and trailhead continued to be cooperatively maintained and improved as per the Commission's cooperative stewardship agreement with the landowners, SC Parks, NYS-DEC, and SCWA. Regular maintenance activities include the removal of litter and dumped materials, registration station upkeep, fence repairs, weed control, maintenance of signage and trail pruning. This year, staff digitized the trail for NYSDEC, pruned and weeded the native planting areas, maintained the registration box at the trailhead, and removed debris and litter.

### Compliance, Enforcement and Mitigation

#### *ECL Article 57 Litigation:*

Division staff provided extensive technical assistance and restoration planning to the NYS Attorney General's office for a serious case in the Town of Brookhaven that involved clearing, dumping, and earth moving on properties in the Core Preservation Area, some of which are Suffolk County Nature Preserve land and lands encumbered by Commission held conservation easements.

#### *ATV Damage & Dumping Mitigation Program:*

The division works with public land managers, the PLC and the Law Enforcement Council to mitigate widespread ATV damage, dumping, encroachments, and vandalism in the Central Pine Barrens. Erosion of fragile soils, habitat destruction, trail damage, encroachment of invasive species and other negative impacts caused by illegal off-road vehicle use



*The narrowing of a fence opening at the Dennis Puleston Warbler Woods Preserve in 2014, combined with other ongoing ATV mitigation work, has improved conditions at this trailhead.*

continue to compromise the protection of natural areas across the Central Pine Barrens region. This program primarily involves damage assessments, mitigation planning, installation and ongoing repairs of barriers and signage, monitoring, reporting and other related work.

Illegal activities discovered during recent field work, including illegal encroachments and clearing, were reported by division staff to the Commission's Compliance and Enforcement staff. Division staff removed the dumped materials from the interior of Turtle Rock Preserve in Ridge and the TOB hauled it away. Reassessments of problem access points, barriers, gates, signage, encroachments, and dumping in the upper Carmans River region, in coordination with compliance and enforcement and land management staff is also being conducted. This work provides a basis for planning and prioritizing response actions and the photo documentation aids in evaluating the success of ATV damage mitigation efforts.



## **Central Pine Barrens Advisory Committee**

**Jeffrey W. Szabo, Chief Executive Officer, Suffolk County Water Authority, Chair**  
**Richard L. Amper, Executive Director, Long Island Pine Barrens Society, Vice Chair**

The Pine Barrens Advisory Committee was established in New York State Environmental Conservation Law Article 57, which specifically named the 24 member organizations and authorized up to 28 members. The committee membership is represented by a balance of environmental, civic and builder groups whose purpose is to actively assist and advise the Central Pine Barrens Joint Planning and Policy Commission in the implementation and revision of the Central Pine Barrens Comprehensive Land Use Plan.

During 2017, the Advisory Committee did not conduct any regular meetings. However, during 2017, individual member organizations did continue to provide input to the Commission on a variety of matters, including the Comprehensive Land Use Plan.



## Pine Barrens Credit Clearinghouse

James T.B. Tripp, Esq., Senior Counsel, Environmental Defense Fund, Chair  
Andrew Freleng, Chief Planner, Suffolk County Division of Planning &  
Environment, Vice Chair

The Long Island Pine Barrens Protection Act specified the need for land use protection mechanisms to protect the Core Preservation Area that included the purchase of development rights that later came to fruition when the 1995 Central Pine Barrens Comprehensive Land Use Plan was completed and the Pine Barrens Credit Program, a transfer of development rights program, was created. Chapter 6 of the Plan outlines the overall Credit program that defines sending and receiving areas, specifies operating procedures and tracking requirements and includes Credit allocation formulas. The Plan specified a five-member Clearinghouse Board of Advisors to oversee the operation and implementation of the Credit program and is comprised of representatives for the State of New York, the County of Suffolk, and the Towns of Brookhaven, Riverhead and Southampton who are appointed by these entities and serve without compensation.



Owners and purchasers of Pine Barrens Credits transact business in an open market, with all Credits and transactions tracked by the Clearinghouse from “cradle to grave”. The Clearinghouse can choose to actively assist the market by offering to purchase Credits as it has done in prior years. Information on prior Clearinghouse initiatives to purchase Credits is available on the Commission’s website at <https://pb.state.ny.us>.

The Clearinghouse also publishes a monthly Registry which lists potential buyers and sellers of Credits that is also available on the Commission’s website.

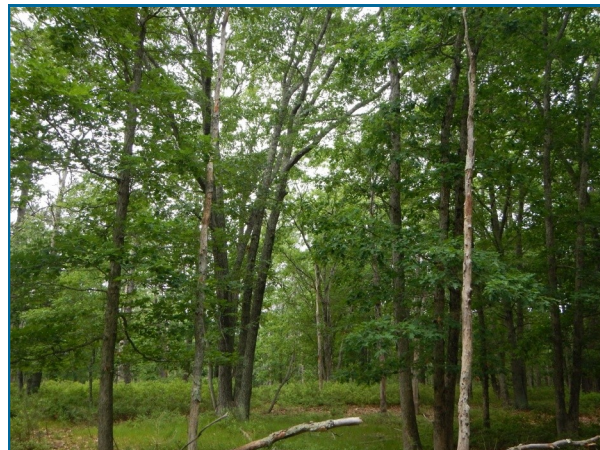
### 2017 Credit Program Activity and Statistics

Credit program transactions and Core parcels that have been preserved since the inception of the Program in 1995 are captured in the information provided below along with highlights of the Program’s activity in 2017.

Except where noted, the statistics reflect the Program's activity across the three participating towns, Brookhaven, Riverhead and Southampton. Individual Town level breakdowns are available in Tables 1-3 at the end of this section and on the Central Pine Barrens Commission's website at <https://pb.state.ny.us/our-work/credit-program-tdr/program-overview/>.

### *Acreage Enrolled*

As of 1/1/18, there are 966 parcels enrolled in the Program, which are now protected from future development or for partially developed parcels, from further development since they have conservation easements placed on them. The development potential has been removed from these parcels and translated into Pine Barrens Credits in a certificate form. The owner may either use them directly to develop outside of the Pine Barrens Core Area or can sell to a developer who may need Credits to satisfy town zoning code requirements for extra development density or Suffolk County Department of Health Services sanitary requirements. The total acreage that has been encumbered by conservation easements is approximately 1,997 acres, with an average parcel size of 2.07 acres. From the larger Pine Barrens preservation perspective, these easement protected lands comprise approximately 3.5% of the statutorily defined 56,836 acre Core Preservation Area.



### *Credits Issued, Redeemed and In Circulation*

Since the start of the Program in 1995 (the first Credits were actually issued in 1996), 997.33 Credits have been issued. Of these, 551.39 have been redeemed (55% of the issued Credits), while the remaining 445.94 Credits remain "outstanding" (i.e., issued but still in private hands and unredeemed). The Pine Barrens Credit Clearinghouse owns 10.19 Credits at this time that were purchased in 2011 through an offer made by the Clearinghouse to spend up to \$1 million to purchase Credits from Credit owners located in the Town of Brookhaven.

During 2017, 12.03 Credits were redeemed and 7.8 Credits were generated. The net inventory level of the outstanding Credits went down by 4.23 Credits, which reduced down the ratio on the side of unredeemed credits.

### Credit Sales and Prices Recorded

There were 16.61 Credits sold during 2017. The average "per Credit" sales price was \$77,000 (with the range from \$65,000 up to \$100,000 "per Credit")

To place this in a historical perspective, this 2017 average unit price is close to the 2009 year level. Finally, from the program's inception to 1/1/18, the PBC Program has recorded a grand total of \$45 million in private sales. The complete history of Credit sale prices by year and by Town is available at the end of this section in Table 4.

### Intermunicipal and Intertown Flows of Credits

As of 1/1/18, a total of 116.04 Credits have crossed a municipal boundary (town or village) from their sending parcels to their receiving parcels, representing approximately 20% of all redeemed Credits, or approximately 1 in every 5 redeemed Credits (see Table 2). From a strictly intertown perspective, 89.23 of these 116.04 credits crossed a Town boundary, representing 16% of all redeemed Credits, or approximately 1 in every 6 redeemed Credits (see Table 3).



In 2017, almost all of the Credits were redeemed through the Suffolk County Department of Health Services for sewage flow intensity increases.

### Clearinghouse Funds

The Clearinghouse currently has approximately \$2.5 million in available funds which are administered by the Suffolk County Treasurer's Office. There were no new deposits or disbursements during 2017.

### Easement Compliance and Enforcement (CAE) Activity

The Commission's CAE Coordinators, working with our Land Use Division, completed on-site inspections and baseline documentation reports for many parcels enrolled in the Program. In 2017 numerous field conditions either unrelated to the easement provisions or affecting nearby parcels or road right of ways have been documented and addressed through the CAE Division's Incident Reporting (IR) System.



These formal incident reports are then tracked until the field condition is resolved, usually in close coordination with public lands managers, highway departments, parks departments, environmental conservation police, or other agencies. Typical conditions include clearing, dumping, off road vehicle violations, vandalism or public property damage, etc.

	Brookhaven	Riverhead	Southampton	Total	2017
Parcels	498	35	433	966	13
Acreage	778.10	516.51	702.67	1997.28	10.03
Average parcel size	1.56	14.76	1.62	2.07	0.77
Credits generated	528.17	172.29	296.87	997.33	7.80
Credits redeemed	295.42	124.53	131.44	551.39	12.03
Credits not redeemed	232.75	47.76	165.43	445.94	-4.23
Credits sold	472.16	216.2	238.89	927.25	16.61
Total value of PBC transactions through this date	\$22,085,294	\$7,732,747	\$15,600,880	\$45,418,921	\$1,283,450
Credits owned by the Clearinghouse	10.19	–	–	10.19	

\*Please note that Credits can be sold multiple times until they are redeemed.



Table 2: Intermunicipal Flows of Pine Barrens Credits as of 1/1/2018				
Destinations	Originating from			Totals
	Brookhaven	Riverhead	Southampton	
Babylon (District 100)		2.71		2.71
Brookhaven Unincorporated (District 200)		29.34	13.64	42.98
South Country Village (District 202)	0.54			0.54
Patchogue Village (District 204)	0.2			0.2
East Hampton Village (District 302)			2.75	2.75
Huntington Unincorporated (District 400)		1		1
Islip Unincorporated (District 500)	11.22	15.97	7.13	34.32
Hauppauge Village (District 504)	0.53		1.17	1.7
Riverhead Unincorporated (District 600)	3.05		0.16	3.21
Smithtown Unincorporated (District 800)			0.1	0.1
Southampton Unincorporated (District 900)	0.46			0.46
Quogue Village (District 902)			0.37	0.37
Southampton Village (District 904)			18.15	18.15
Westhampton Beach Village (District 905)			7.55	7.55
Totals	16	49.02	51.02	116.04

Table 3: Intermunicipal Flows of Pine Barrens Credits as of 1/1/2017

Destinations	Originating from			Totals
	Brookhaven	Riverhead	Southampton	
Babylon (District 100)		2.71		2.71
Brookhaven Unincorporated (District 200)		28.85	13.64	42.49
South Country Village (202)	0.54			0.54
Patchogue Village (204)	0.2			0.2
East Hampton Village (302)			2.75	2.75
Huntington Unincorporated (400)		1		1
Islip Unincorporated (500)	11.22	15.41	7.13	33.76
Hauppauge Village (504)	0.53		1.17	1.7
Riverhead Unincorporated (District 600)	35		0.16	3.21
Smithtown Unincorporated (800)			0.1	0.1
Southampton Unincorporated (District 900)	0.46			0.46
Quogue Village (902)			0.37	0.37
Southampton Village (904)			18.15	18.15
Westhampton Beach Village (905)			7.55	7.55
Totals	16	47.97	51.02	114.99

Table 4: Intertown Flows of Pine Barrens Credits as of 1/1/2017

Destinations	Originating from			Totals
	Brookhaven	Riverhead	Southampton	
Babylon (District 100)		2.71		2.71
Brookhaven (District 200)		28.85	13.64	42.49
East Hampton Village (302)			2.75	2.75
Huntington (District 400)		1		1
Islip (District 500)	11.22	15.41	7.13	33.76
Hauppauge Village (504)	0.53		1.17	1.7
Riverhead (District 600)	3.05		0.16	3.21
Smithtown (District 800)			0.1	0.1
Southampton (District 900)	0.46			0.46
Totals	15.26	47.97	24.95	88.18

## Pine Barrens Law Enforcement Council

Chairman - Lt. Mike Smith, SC Sheriff's Department  
Vice Chair - Asst. Director Arthur Pendzick, SC Park Rangers  
Vice Chair - Lt. Tom Gadoski, NYSDEC Law Enforcement

The Pine Barrens Law Enforcement Council (LEC) was created in 1994 when members from several law enforcement agencies met to discuss the multitude of enforcement issues unique to the protection and preservation of the Central Pine Barrens. Realizing that the protection of this vital natural resource from unlawful activity fell under laws and regulations from numerous jurisdictions, including federal, state, county and town agencies, it was obvious that coordination was needed for the officers to be the most effective in pursuing the mission of the Central Pine Barrens Commission and the LEC



To this end, the LEC was created as a council under the Commission, growing to 26 member agencies including federal, state, county and town police departments; county park rangers; investigators and prosecutors from the Suffolk County District Attorney's office; code enforcement officers; military personnel; and other law enforcement, regulatory and security agencies that encompass the Central Pine Barrens. The coordinated effort enforcing these many laws and regulations, sharing resources, intelligence, and other

pertinent information; and the use of multi-agency enforcement details have helped to make law enforcement within the Central Pine Barrens more efficient and effective as evidenced by the many successful apprehensions and prosecutions of violators. Additionally, the increased presence of uniformed officers of the LEC in the Central Pine Barrens has helped to deter violations and provide the public with the level of protection they expect to see on these protected lands.

### **Personnel**

The position of chair of the Law Enforcement Council is currently held by Lt. Michael Smith of the Suffolk County Sheriff's Office. The LEC's vice-chairs are Deputy Director Arthur Pendzick of the Suffolk County Park Rangers and Lt. Tom Gadomski of the New York State Department of Environmental Conservation (NYSDEC) Division of Law Enforcement. The LEC obtains assistance from Commission staff which includes Executive Director John Pavacic, Chief Enforcement Coordinator Tim Huss, Enforcement Officers Mike Lewis and Jim Mazzio, and Administrative Specialist Kathy Delligatti. The Commission staff help to coordinate, support and document the efforts of the multi-agency LEC.

### **Public Participation and Communication**

Several civilian organizations and interest groups routinely attend the monthly meetings of the LEC. These include local civic associations, mountain biking advocates, hiking groups and other citizens and user groups that care about the protection and quality of life and the natural resources of the Central Pine Barrens. They are often the eyes and ears for law enforcement providing the LEC with a good perspective of the issues from a public point of view. The LEC would be much less effective without the diligence and support of these civilian counterparts and the general public. In addition to direct contact between the public and the LEC, complaints are frequently received by the various agencies, either independently or through the LEC's main complaint call in number, 1-877-BARRENS, administered by the Suffolk County Sheriff's Office. Complaints through the Suffolk County Police dispatch 911 service as well as through the 24-hour hotlines for NYSDEC are also frequently received and shared with the LEC.

Sharing information and resources is vital to the success of the LEC. In addition to sharing information via secure police radio and phone communication, members are kept up to date at the monthly LEC meetings and during enforcement details. Additionally, the PBLEC Handbook is kept up to date with the most current information of representative agencies' member contact numbers, enforcement sections and other pertinent information.

### **Environmental Benefit Fund**

The LEC's Environmental Benefit Fund (EBF) at the start of 2017 was \$58,129.64. There was one purchase made this year, a Polaris 450 ATV, for \$6,125 for the Suffolk County Sheriff's Office which is an important member of the LEC. In 2017, the fund benefited from the closure of two environmental cases prosecuted by the Suffolk County District Attorney's Office and the New York State Attorney General. A total of \$84,713.17 was in the EBF at the close of 2017.



## Pine Barrens Law Enforcement Council Activities for 2017

### Off-Road Vehicle Enforcement

Illegal All Terrain Vehicle (ATV) and off-road vehicle operation remains the foremost focus for the Pine Barrens Law Enforcement Council. In addition to the environmental damage done by these vehicles and the detrimental impact to the quality of life caused by this activity in the Central Pine Barrens, illegal off-road use is dangerous to the operators and to the public. In 2017, 18 Multi-Agency ATV Task Force details resulted in a total of 72 illegal ATVs being impounded and 155 ATV related summonses issued. Since the inception of these multi-agency ATV details, a total of 1,212 illegal ATVs have been impounded with 3,004 ATV-related summonses issued. Additionally, eight summonses were issued for fishing violations, nine for hunting violations, two for speeding on public roads, one for not having a driver's license, two for motor vehicle equipment related violations and one for a littering case. Additionally, four misdemeanor charges were issued related to drug possession and a suspended license. One subject was also apprehended on a warrant.



Multi-Agency ATV Enforcement Detail

There were 28 illegal off-road 4x4 vehicle apprehensions in 2017 with 29 related summonses issued. The total number of off-road vehicles apprehended since 2013 is 127 illegal 4x4 apprehensions with 189 associated summonses issued.

In addition to these larger organized details, several smaller ATV and 4x4 details were conducted throughout the year by member agencies to address local issues and complaints, adding to the enforcement effort. These efforts go a long way in deterring unlawful off-road vehicle and ATV activity.

### Environmental and Wildlife Enforcement

Lt. Michael Smith of the Suffolk County Sheriff's Office coordinates an average of two commercial vehicle inspection details each month, weather permitting, within the Core Preservation Area of the Central Pine Barrens. A detail organized on May 23, 2017, which is depicted in the photo on the next page, is typical of these enforcement efforts. On that day, LEC member Lt. Smith, conducted a heavy duty truck enforcement detail on CR 51 near Suffolk County Community College. During the detail 48 trucks were inspected for safety and envi-

ronmental issues (including emissions, leaking fuel, and the transportation of regulated materials). Out of the 48 truck, 16 were taken out of service for safety violations and 52 summonses were issued. In addition to the Sheriff's Office, other agencies participating in the detail included the New York State Department of Transportation, Riverhead and Southampton Town Police, NYSDEC Division of Law Enforcement, and Suffolk County Parks. These details have a direct impact upon the quality of life and environment in the Central Pine Barrens. Documented truck safety issues can affect the safety of the resource users and local residents, and faulty equipment can and does affect groundwater and air quality.

The aforementioned enforcement details only highlight two of the many other enforcement details undertaken by LEC members in 2017. In an investigation referred to NYSDEC, an unlawful effluent discharge discovered by Commission staff was found to be polluting a wooded lot in Coram. DEC Law Enforcement issued summonses, abated the discharge and recovered a \$3,500 penalty.



NYSDEC Environmental Conservation Officers measuring opacity of diesel emissions.

Other enforcement matters addressed by the LEC members included fish and wildlife law enforcement to ensure hunting and fishing was conducted lawfully thereby protecting the resource and public safety. Enforcement details included an organized patrol schedule for state and county hunting lands by the NYSDEC during the hunting season and the use of decoys to apprehend illegal shooters.

#### Dumping in the Central Pine Barrens

Despite the many legal ways to dispose of waste, some feel the need to dump their trash or waste in the Central Pine Barrens. In 2017, as in the past year, there was an influx of “dirty fill” dumping, which is actually construction and demolition debris in dirt form. Comprised of processed wood, pieces of ceramic tile, pieces of plastic plumbing pipe, metals, and even asbestos fibers, this material can be injurious to environmental quality. The worst of this material can include heavy metals, PCBs, petroleum and other cancer causing agents.



Other dumped materials include household garbage, defunct vessels and vehicles, and the more traditional construction and demolition debris. The officers go to great lengths to ap-

prehend these violators, often sifting through household garbage, tracking down receipts or running hull numbers, many times with positive results. A video surveillance program established by the compliance officers of the Central Pine Barrens Commission assisted the LEC in making three apprehensions for dumping in the Central Pine Barrens. Local media coverage, including televised reporting on NBC and News 12, helped spread the word about the LEC's enforcement effort helping to deter future violations.

### Training, Mitigation, Aviation and other Projects

The Suffolk County Sheriff's Office has continued to provide certified ATV training to members of the LEC and other volunteers such as local fire and ambulance department personnel. This training is conducted at Gabreski Airport in Westhampton Beach.

SC Deputy Sheriff John Noonan instructs LEC member agencies on safe ATV operation-photo

The LEC continues to work with the Protected Land Council, implementing various ideas and projects in an attempt to reduce the negative impacts of violators to the Central Pine Barrens.

NYS Environmental Conservation Police again provided fish and wildlife enforcement training to LEC members prior to the 2017 hunting season.

LEC members continue to support the amendments to Article 57 of the Environmental Conservation Law, which would address enforcement issues directly related to Long Island's Central Pine Barrens.

The New York State forest rangers and the enforcement officers of the Commission, along with personnel from the state and county levels, continue to be heavily involved in efforts to slow the spread of the Southern Pine Beetle infestation within the Central Pine Barrens.

### ***PBLEC ENFORCEMENT STATISTICS 2017***

#### **Total for all reporting Agencies**

310 - Total # ATV complaints received

106 - Total # ATV related summonses

57 - Total # ATVs impounded

8 - Total # ATV related injuries

\_\_\_\_\_#ATV Fatalities

7 - Stolen ATVs recovered

40\_#ATVs reported stolen

2 - Stolen vehicles recovered

21 - Illegal off road/4x4summonses/incidents 0\_\_\_4x4 impounds

43 - Arson/fire incidents

42 - Illegal dumping summonses/arrests/incidents

0 - Fish and Wildlife summonses/arrests

1 - Firearms & other weapons incidents

0 - All other ECL summonses/arrests

- 0 - Trespass summonses/arrests
- 2 - Encroachments/ other property incidents
- 6 - Illegal wood cutting summonses/arrests/incidents
- 2 - Homeless summonses/arrests/incidents
- 2 - Illegal drug summonses/arrests/incidents
- 3 - Penal law misdemeanors
- 0 - Penal law felonies

### 2017 12<sup>th</sup> Annual Officer of the Year Awards

Suffolk County Park Ranger Joseph Augugliaro was the Central Pine Barrens Law Enforcement Council's selection as **Officer of the Year** for his significant contribution to environmental enforcement efforts.

Ranger Augugliaro has been the most productive officer in ATV Enforcement in the past two years, accounting for more than 50% of all ATV impounds and associated summonses on the Multi-Agency ATV Task Force and within the Suffolk County Park Ranger Unit details.

Results of his enforcement efforts have resulted in more than 100 illegal ATV impounds during this time.

#### New York State Police Trooper Fabio Daino - For Significant Contribution to Environmental Enforcement Efforts

Trooper Daino has been an active participant on the multi-agency ATV details, with numerous ATV impounds and associated summonses and is a liaison Officer for the LEC coordinating law enforcement and environmental cleanup efforts between the various governmental agencies.

#### Suffolk County Deputy Sheriff Brian Cowan - For Continuous Significant Environmental Enforcement Activity

Deputy Cowan has been an active participant on the multi-agency ATV details. He has been responsible for numerous ATV impounds and associated summonses. He is also assigned to patrol the Central Pine Barrens in addition to his regular primary duties.

#### Suffolk County Park Ranger Michael Hanley - For Continuous Significant Environmental Enforcement Activity

Ranger Hanley has been an active participant on the multi-agency ATV details and also on the Park Ranger ATV assignments, contributing to numerous illegal ATV impounds and associated summonses as well as other environmental enforcement.

#### NYS Forest Ranger Joseph M. Pries - For Continuous Significant Environmental Enforcement Activity



Ranger Pries has participated on several multi-agency ATV details and works regularly within the Central Pine Barrens. He has been a field training officer for the Forest Rangers newly assigned recruits and provided fire fighting assistance to the western states receiving certification as a defensive tactics instructor.

### **NYS Environmental Conservation Officer Landon Simmons - For Significant Contribution to Environmental Enforcement Effort**

Officer Simmons has been an active participant on the multi-agency ATV details, responsible for numerous illegal ATV impounds and associated summonses. He has made numerous arrests for environmental violations within the Central Pine Barrens and is a constant presence therein.

### **2017 Suffolk County Park Rangers Special Details Report**

On May 3, 2017, the Ranger Unit initiated a special patrol, consisting of a two-person team on quads and one scout, going out on random weekdays and times, focusing primarily on illegal ATV and Off-Road Vehicle (ORV) enforcement. These details along with regular Ranger patrols and assignments, have proved to be highly successful as noted in the following statistics.

A total of 21 details and special assignments were accomplished with the following results:

#### **34 Illegal ATVs were impounded:**

- 23 Dirt Bikes
- 10 Quads
- 1 Go Cart

#### **65 ATV Related Summonses were issued:**

- 20- SC Code 822.3a (operate ATV on Public Lands)
- 2-SC Code 822.3b (Operate ATV on private lands w/o written landowners Consent)
- 5-V&T 2410.4 (Parent allows minor to operate ATV illegally)
- 10-V&T 2282.1 (operate unregistered)
- 2-V&T 2283.1 (failure to display plate on ATV)
- 13-V&T 2407.4 (operate ATV w/o liability insurance in effect)
- 5-V&T 2406.2 (failure to wear helmet on ATV)
- 5-V&T 2403.1 (operate ATV on public roadway)
- 1-V&T 2404.1b (operate ATV recklessly)
- 1-V&T 2404.2a (ATV failure to stop for emergency vehicle)
- 1-V&T 2404.2b (failure to comply with lawful order on ATV)

#### **6 ORVs (Off-Road Vehicles) were apprehended with**

##### **9 associated summonses being issued:**

- 6-SC Code 822.11a (Operate ORV off road on public lands)
- 2-V&T 401.1a (unregistered ORV)
- 1-V&T 319.1 (uninsured ORV)



**13 Miscellaneous V&T Summonses were also issued:**

- 1-1212 (Reckless Driving- Misd.)
- 2-509.1 (unlicensed driver)
- 2-509.2 (operate vehicle not proper for license)
- 1-1111.d (failure to stop for red light)
- 2-1172.a (failure to stop at stop sign)
- 1-401.1 (unregistered vehicle)
- 1-381.1a (motorcycle with inadequate brakes)
- 2-1229.c3a (failure to wear seat belt)
  
- 1-375.2a (operate vehicle w/o head lights)

There were also three arrests for unlawful possession of marihuana (Penal Law Sec.221.05)

Noteworthy: of the 34 ATV impounds, one was actually a go-cart operating in and out of traffic on the busy William Floyd Parkway. The go-cart was apprehended but the operator fled and was never caught.

In summary, these details produced some fantastic results, but it was the officers involved that made it happen. The following is a list of all the Rangers who contributed and the amount of times they worked and assisted.

- |                      |                   |
|----------------------|-------------------|
| Joe Augugliaro (13)  | Mike Hanley (5)   |
| Jeff Campo (5)       | Mike Prudenti (3) |
| Haley Ruymaker (2)   | Paul Barbato (2)  |
| Justin Butera (1)    | Mike Losee (1)    |
| Dominick Messina (1) | Jason Green (1)   |
| Sgt. Bill Curcie (2) |                   |

**In Closing**

The partnership the LEC affords its members continues to be extremely effective in combating the individuals responsible for detrimentally impacting the Central Pine Barrens. An extremely high level of commitment is necessary from the participating members in order to maintain the high level of success that the Council has in apprehending these violators. This success would not be possible if without these partnerships; not just the partnership between the law enforcement agencies but also with the LEC's civilian counterparts that provide vital support. The public remains an important asset to the LEC with a significant percentage of the cases documented by the LEC coming from information and tips provided by the public.

The LEC greatly appreciates the support of the Commission and its staff, specifically John Pavacic, the executive director of the Central Pine Barrens Commission; Larry Hynes, the compliance and enforcement coordinator; and administrative staff Kathy Delligatti and Carol

Sholl. Without their assistance and direction the LEC would enjoy much less success and our success would go unnoticed.

A special thanks goes to Suffolk County Parks Superintendent Tony Trotta for his mechanical expertise and impounds of the apprehended ATVs during our enforcement details.

Every one of these partnerships is necessary for the success of the Pine Barrens Law Enforcement Council. We have accomplished much, but there is still much work to do. We are up to the challenge.





## Wildfire Task Force

Christopher Lindberg, First Assistant Chief, Manorville Fire Department and FDNY  
HazMat Specialist, Chair

Edward Schneyer, Director SCFRES Emergency Preparedness, Co-Vice Chair

Captain Timothy Byrnes, NYSDEC Forest Rangers, Co-Vice Chair

The Wildfire Task Force is one of the Commission's larger Councils with 43 members comprised of public and private agencies and local fire departments. The breakdown of the organizations represented on the task force is presented in Table WF-1.

The task force was created after the 1995 wildfires to bring all fire service-related entities together to provide for pre-wildfire suppression planning and response in the Central Pine Barrens and to address wildfire prevention planning provisions called for by the Long Island Pine Barrens Protection Act. The Task Force accomplished this goal through the preparation of a Central Pine Barrens Fire Management Plan which was completed in 1999, leading to the creation of several subcommittees to carry out the plan. A copy of the Fire Management Plan is available from the document library on the Commission website at <https://pb.state.ny.us>.



2015 Brushfire in the Dwarf Pine Plains in Westhampton

The Wildfire Task Force meets approximately four times annually on weekday evenings, with the locations varying among fire houses and agency offices. Specialized committees also exist, which meet on schedules that are established separately from the task force.

The task force has the following standing subcommittees:

- Firewise and Wildfire Prevention Subcommittee
- Fire Weather Subcommittee
- Prescribed Fire Subcommittee
- Training Subcommittee
- Water Supply Subcommittee (temporary)
- New York Wildfire and Incident Management Academy

### Wildfire in the Central Pine Barrens

Wildfire is a natural process in the fire-adapted Central Pine Barrens. However, due to a community's close proximity to this fire-prone ecosystem, wildfires can pose a risk to area residents and property. The abundance of fire-dependent vegetation, extensive wildland urban interface, fire history, and other factors have led the New York State Firewise Council to

<b>Table WF-1</b> Central Pine Barrens Wildfire Task Force			
<b>Federal Organizations (6)</b>	Brookhaven National Laboratory Fire Rescue Group ( <i>p/o of Emergency Services Division</i> ) National Weather Service New York Air National Guard 106th Rescue Wing New York Army National Guard Aviation Support Facility #1 United States Fish and Wildlife Service ( <i>Long Island Refuge Complex</i> ) United States Forest Service		
<b>State Organizations (5)</b>	New York State Department of Environmental Conservation New York State Emergency Management Office New York State Office of Fire Prevention and Control New York State Office of Parks, Recreation, and Historic Preservation Suffolk County Water Authority		
<b>County Organizations (5)</b>	Suffolk County Department of Fire, Rescue and Emergency Services Suffolk County Fire Academy Suffolk County Department of Parks, Recreation and Conservation Suffolk County Police Department Arson Squad Suffolk County Arson Task Force		
<b>Town Organizations (3)</b>	Brookhaven Town Fire Marshal ( <i>Dept. of Public Safety, Div. of Fire Prevention</i> ) Riverhead Town Fire Marshal ( <i>part of Building Department</i> ) Southampton Town Fire Marshal ( <i>part of Public Safety Department</i> )		
<b>Fire Departments (15)</b>	<table border="0" style="width: 100%;"> <tr> <td style="vertical-align: top; width: 50%;"> Brookhaven Fire Department  East Quogue Fire Department  Eastport Fire Department  Flanders Fire Department  Gordon Heights Fire Department  Hampton Bays Fire Department  Manorville Fire Department  Middle Island Fire Department </td> <td style="vertical-align: top; width: 50%;"> Quogue Fire Department  Ridge Fire Department  Riverhead Fire Department  Rocky Point Fire Department  Wading River Fire Department  Westhampton Beach Fire Department  Yaphank Fire Department </td> </tr> </table>	Brookhaven Fire Department East Quogue Fire Department Eastport Fire Department Flanders Fire Department Gordon Heights Fire Department Hampton Bays Fire Department Manorville Fire Department Middle Island Fire Department	Quogue Fire Department Ridge Fire Department Riverhead Fire Department Rocky Point Fire Department Wading River Fire Department Westhampton Beach Fire Department Yaphank Fire Department
Brookhaven Fire Department East Quogue Fire Department Eastport Fire Department Flanders Fire Department Gordon Heights Fire Department Hampton Bays Fire Department Manorville Fire Department Middle Island Fire Department	Quogue Fire Department Ridge Fire Department Riverhead Fire Department Rocky Point Fire Department Wading River Fire Department Westhampton Beach Fire Department Yaphank Fire Department		
<b>Fire Councils (5)</b>	Brookhaven Town Fire Chiefs Council Fire Chiefs Council of Suffolk County NY Riverhead Town Fire Chiefs Council Southampton Town Fire Chiefs Council Suffolk County Fire District Officers' Association		
<b>Commission Councils (3)</b>	Law Enforcement Council Protected Lands Council New York Wildfire and Incident Management Academy		
<b>Private Organization (1)</b>	The Nature Conservancy (Long Island Chapter)		
<b>Executive Board</b>	Chair & two Co Vice Chairs		



declare the eastern portion of Long Island, which is dominated by the Central Pine Barrens Area, as the number one community in the state at risk for damage to and loss of property due to wildfire.

More than 800 brush fires typically occur every year during the spring and summer in Suffolk County. In 1995, the Rocky Point and Sunrise Fires burned over 5,000 acres and continued to burn for several days. These wildfires resulted in extensive evacuations, property loss and damage, the closure of major transportation routes in the area and significant economic impacts to local businesses, tourism and residents.

In April, 2012, the Crescent Bow wildfires in the Ridge and Manorville areas burned over 1,200 acres which again resulted in evacuations of homes and significant damage to property and natural resources.

In the wake of the April 2012 Crescent Bow Fire, the Commission developed a multi-pronged strategy to deal with the on-going wildfire threat which the Commission continues to carry out in 2016. The strategy includes:

- Providing increased and enhanced training for volunteer firefighters and first responders via the Commission's Wildfire and Incident Management Academy;
- Expanding the use of prescribed fire to reduce wildfire fuel loads;
- Reinvigorating the Central Pine Barrens Fire Management Plan and its implementation;
- Expanding the establishment of Firewise Communities programs; and
- Supporting enhancing water supply resources for wildfire fighting efforts.



## 2017 Summary of Wildfire Task Force Activities

During 2017, the Wildfire Task Force became reinvigorated with the selection of a new Task Force Chair, Christopher Lindberg who is the first assistant chief with the Manorville Fire Department and a hazmat specialist with the FDNY, bringing 35 years of experience in fire and emergency management to the Task Force. Lindberg hit the ground running by quickly becoming familiar with the past work and activities of the Task Force and by developing a plan of action to tackle specific wildfire management projects such as revamping the 1999 Fire Management Plan and actively engaging in and promoting wildfire prevention initiatives with the Task Force member agencies and fire departments. In addition, a schedule was set for the Task Force to meet four times a year to encourage more frequent participation by the lo-

cal fire department members and agency representatives. The Task Force met four times in 2017 and a subcommittee was created to undertake the revision of the Fire Management Plan.

The work put into motion over the last several years related to wildfire prevention and wildland fuel mitigation continued to advance in 2017 with a renewed effort thanks to the leadership of the new Task Force chair. A synopsis of this work is provided below.

### Firewise and Wildfire Prevention

The Task Force continues to promote wildfire prevention programs to enhance the protection of residents living within the wildland urban interface area of the Central Pine Barrens from devastation and loss from wildfires. This is accomplished through programs such as Firewise, Firewise Communities and Ready Set Go that provide free public outreach materials which are distributed by the Task Force by mail and at local fire department and civic group events. In addition, the Task Force has developed a wildfire prevention display board that is used at these local events as well. Commission staff is also available to provide presentations to local groups on these programs and to instruct homeowners on what they can do to better protect their home from wildfire.



These public outreach efforts help the residents that live within the fire-prone Central Pine Barrens learn about what they can implement to help prepare their home for a wildfire before it occurs. Homeowners can significantly increase the ability of their homes to survive a wildfire by implementing Firewise measures on their property. These can include measures such as removing dead leaves and dead brush, cleaning out gutters, moving wood piles away from the house and other similar, basic, good property maintenance measures. Homes and communities that have adopted the Firewise approach allow firefighters to concentrate on fighting the wildfire, which ultimately saves more residences and lives. The Firewise program draws on a community's spirit and its willingness to take some of the responsibility for reducing wildfire risks and can be tailored to a community's specific needs. Information on the Firewise and Firewise Communities USA program is available at <http://firewise.org>.

### Community Wildfire Protection Plan (CWPP)

The Commission continued to work with the CWPP team partners that included town, county and state agencies involved with public land management and emergency response and the Ridge and Manorville fire departments to implement recommendations from the Ridge-

Manorville-Calverton Community Wildfire Protection Plan that was prepared and adopted by the Commission in 2016.

The CWPP makes recommendations to public land managers and local residents on strategies for reducing the area’s wildfire risk, including wildfire mitigation measures to be implemented on large wooded or natural public lands that are within the wildland urban interface area (locations where development is adjacent to wooded areas in the Central Pine Barrens) to provide protection for residents and businesses that are adjacent to these areas.

In addition, the CWPP provides information on how to reduce risks to public safety and property and contains an area-specific community level risk assessment that includes a wildfire hazard risk assessment and identifies measures to reduce structure flammability and hazardous fuels (vegetation), in addition to community preparedness through public outreach. The CWPP also provides public outreach strategies to educate Ridge, Manorville and Calverton residents on how to create a “survivable or defensible” space around their homes to reduce damage and loss from wildfire.



The completion and adoption of the CWPP rendered the study area eligible for federal funding to help implement mitigation measures identified in the plan. Soon after the CWPP’s approval, Commission staff commenced plan implementation by beginning to conduct detailed, site-specific individual wildfire prevention home assessments in the plan area for homeowners who requested this service. A detailed report was provided to participating homeowners identifying specific threats that may render their properties more vulnerable to wildfire damage and also identified specific measures that could be undertaken to ameliorate these conditions.

In 2017, the following wildfire prevention and awareness accomplishments were achieved in the CWPP area:

- Wildfire Prevention Home Assessment completed in 2017: 9 (4 in Manorville & 5 in Ridge)  
Total for Program to since started in 2016: 18 (5 in Manorville & 13 in Ridge)
- New Fire Danger Sign installed at the NYSDEC Lustgarten trailhead located on the north side of Middle Country Road in Ridge between Wading River Road and Woodlot Road. Funding for the purchase of the sign was provided by a USDA Forest Service grant administered by the Northeast Forest Fire Protection Compact.
- “Understanding Fire Danger and Wildfire Potential” brochure created and published to help the public understand the relationship between the fire danger rating they see posted on the fire danger signs located on certain roadways and actions they should be taking to prepare ahead should a wildfire occur. The printing costs for the brochure were paid by a USDA Forest Service grant administered by the Northeast Forest Fire Protection Compact.



- PowerPoint Presentation to the Brookhaven National Lab Community Advisory Council on the process to complete the CWPP plan and projects underway based on the Plan’s recommendations (April 13, 2017). This was a follow-up to the original presentation made to the CAC in 2015 on the proposed plan.
- Wildfire Prevention Display at Brookhaven National Lab “Safety and Health Expo on June 13, 2017 - attended by staff and “Go bags” from the Ready Set Go program were distributed that contained emergency preparedness and Firewise information.
- Wildfire Prevention Display at the Manorville Fire Department’s Fire Prevention Open House on October 15, 2017 - attended by staff and “Go bags” from the Ready Set Go program were distributed that contained emergency preparedness and Firewise information.
- Provided public information materials on wildfire prevention to the Ridge Fire Department for distribution at their Fire Prevention Open House in October 2017.
- Applied for and was awarded a USDA Forest Service Cooperative Forestry Assistance Grant for Wildfire Risk Reduction (amount \$48,000) for a project entitled “Reducing Structural Ignitability in the Ridge-Manorville-Calverton Community Wildfire Protection Plan Area”. This funding will enable the implementation of additional recommendations from the CWPP such as the creation of a wildfire prevention homeowners guide, providing train-the-trainer workshops to community residents and local fire department members on how to conduct a wildfire prevention home assessment to enable them to assist their local community, and will provide funding to reimburse homeowners (up to a specified limit) for hazardous fuel mitigation work on their properties.

#### Accomplishments by CWPP Team Agency Members

- Brookhaven National Laboratory conducted prescribed fires along the northeastern portion of the laboratory to treat 30 acres of woodlands.
- NYSDEC has performed mechanical treatments to thin 6 acres of woodlands in the Rocky Point Pine Barrens State Forest in an area that includes a portion of the CWPP area. It is planned that a prescribed fire will be performed in this area next year.



#### Fire Weather

The Commission continues to operate a fire weather station located in Eastport. Data from this weather station is used to determine the daily fire danger rating for the Central Pine Barrens. The fire danger rating translates weather and vegetation conditions (fuels) into how difficult a wildfire would be to control should a fire start occur. This data is sent daily from the Commission staff to Suffolk County Fire, Rescue and Emergency Services which in turn dispatches this information to the local fire service community.



In addition, Commission staff sends this report by email and fax to over 50 recipients comprised of local fire departments, public land managers and other interested individuals. The local fire service community uses this information for pre-planning fire suppression resources during dry weather and vegetation conditions when vegetation can more readily ignite and spread into a large wildfire.

Fire danger information is also placed on five Smokey Bear fire danger signs located near the entrances to Sears Bellows County Park and Southaven County Park, along William Floyd Parkway (aka County Road 46) near the entrance to Brookhaven National Laboratory, along the north side of Middle Country Road in the NYSDEC Lustgarten parking area in Ridge and in front of the Commission's headquarters on Old Riverhead Road (aka County Road 31) in Westhampton Beach to inform the public.

The fire danger rating reports are based largely on the statistical evaluation of historic fire weather data and its relationship to historic fire occurrence data that is compared to the daily fire weather data readings, the current National Weather Service fire weather forecast, the number of days since the last significant rain event and the current live fuel (vegetation) conditions, along with other factors. Grass conditions are monitored in the spring since this is typically where a significant number of fire starts occur. In May, the potential for brush fires diminishes as the leaves on the trees, brush and other vegetation open up fully since the new leaves contain a lot of moisture. During the summer, brush conditions are monitored and fire danger reports are issued based on this fuel type.



The local fire service and public land managers may, based on this fire danger information, decide to increase patrols in certain areas, pre-stage equipment or even close or limit access to public land.

### Prescribed Fire Subcommittee

The New York State Department of Environmental Conservation is currently the primary agency performing prescribed fires within the Central Pine Barrens. These prescribed fires help maintain the ecological health of natural areas, are used for ecological restoration, and assist with reducing the amount of vegetative fuel build up in an area which in turn will reduce the potential fire intensity in an area should a wildfire occur.

In 2017, 200 acres of New York State DEC grasslands and 30 acres of woodlands on Brookhaven National Laboratory were treated with prescribed fire in the Central Pine Barrens.



## Training Subcommittee

The primary focus of this subcommittee is to provide wildfire firefighting training with the New York Army National Guard and the New York Air National Guard using helicopters equipped with water buckets. The training includes the local fire departments and agencies which are members of the Wildfire Task Force and the Law Enforcement Council which learn about the protocols that must be followed in order to obtain a helicopter with a water bucket to a scene during a wildfire. Attempts are made to provide this training every one to two years depending on the availability of the National Guard. The training helps the Guard obtain specific qualification training they need. During 2017 no helicopter water bucket training exercises were conducted since the Guard was unavailable to participate.

## New York Wildfire and Incident Management Academy

Kathy Delligatti, Central Pine Barrens Commission, Academy Coordinator



The New York Wildfire and Incident Management Academy (NYWIMA) was established in 1998 with the following goal:

*“The Academy’s goal is to provide for a safe learning environment for Wildland Firefighters and Incident Managers and to foster greater networking opportunities and partnerships between participants from federal, state and local agencies.”*

To aid in achieving this objective, NYWIMA is managed to mirror an actual incident utilizing the Incident Command System under the direction of an Incident Management Team (IMT). The IMT reflects the interagency and cooperative nature of today’s incident management philosophy with team members participating from federal, state, and local agencies.

### Academy Objectives:

- Train students to National Wildfire Coordinating Group Standards.
- Develop qualified trainers and instructors for wildfire and incident management courses.
- Develop awareness of fire management and fire fighting safety among fire fighting organizations and public officials.
- Encourage interagency cooperation, coordination, exchange of experience, education and technology transfer from all levels of government.
- Develop a group of interagency leaders to build upon the first four objectives in the metropolitan New York and Northeast Region.



The Central Pine Barrens Commission's Wildfire Task Force operates the Academy with a consortium of federal, state and county agencies including:

*Federal:* Brookhaven National Lab, Bureau of Land Management, National Park Service, United States Coast Guard, United States Forest Service, United States Fish and Wildlife Service, Northeast Forest Fire Protection Compact

*State:* Massachusetts Department of Environmental Management, New Jersey Forest Fire Service, New York State Department of Environmental Conservation (NYSDEC), New York State Division of Homeland Security and Emergency Services, New York State Office of Fire Prevention and Control

*City, County and Other Organizations:* Fire Department of New York, Suffolk County Department of Fire, Rescue, and Emergency Services, Suffolk County Department of Parks, Nassau County Office of Emergency Management and the Colorado Wildfire Academy.

For course and registration information for the current year, interested persons can visit the Academy section on the Commission's website at <https://pb.state.ny.us> or contact the Academy Coordinator by phone at 631-769-1556 or by e-mail at [nywima@pb.state.ny.us](mailto:nywima@pb.state.ny.us).

In 2017, the Academy offered the following training opportunities on Long Island:

Spring 2017 Training

October – Annual 10-day training period

Additional outside classes

The statistics for these training events that includes the number of instructors and students and is provided on the following pages along with a listing of the courses that were held during the annual October 2017 Academy.



#### 2017 Spring Training

A Brush Truck Training Course was conducted on March 25, 26 and April 1, 2017 at the NYWIMA Brush Truck Course in Yaphank, via the Commission-Suffolk County Memorandum of Understanding. This course was instructed by a National Wildfire Coordinating Group-qualified instructor and received assistance for the field day from local NYSDEC Forest Rangers. The Brush Truck Training program was successfully accomplished and entailed participation from five volunteer fire departments. Participating fire departments included:

- Dear Park Fire Department
- Flanders Fire Department
- Patchogue Fire Department
- Wading River Fire Department
- Westhampton Beach Fire Department

The Brush Truck Training course was designed and laid out in the field on a site which is completely wooded, offering a genuine brush truck driving experience. The training site is located adjacent to the County's Fire, Rescue and Emergency Services department and the Suffolk County Fire Academy in Yaphank. The course was utilized by a number of local fire departments whose attendees universally praised the course and the driving experience.

## Additional Activities

During 2017, NYWIMA provided separate, stand-alone training classes to requesting entities in the Northeast. These included the following:

OHV - Off- Highway Vehicle  
March 31, 2017 & April 2, 2017  
North Massapequa Fire Department  
North Massapequa, NY - 29 students

The Academy also offered for the first time a unique workshops, Intelligence and Investigations Function in the Incident Command System. The course highlighted the role played by the intelligence and investigation function in the Incident Command System planning process, including identifying intelligence needs, the intelligence collection process and the sharing and distribution of intelligence and information. The course was instructed by local law enforcement personnel with extensive incident management experience on local and national events, and was well received by its students.

In the October 2017 Academy there were 23 instructors, 55 overhead staff, 166 students and 15 trainees with a total of 259 attendees. Classes held were the following:

Intelligence and Investigations Function in the Incident Command System  
Off-Highway Vehicle Basic Driver Course  
I-400 - Advanced ICS with NIMS  
S130/190 - Basic Firefighting & Wildfire Behavior  
S130/190 - Basic Firefighting & Wildfire Behavior - 2-day Field Class only  
S-131 - Firefighter Type 1  
S-133 - Look Up, Look Down, Look Around  
S-211 - Portable Pumps & Water Use  
S-212 - Wildfire Chainsaws with Storm Debris Removal  
S-215 - Fire Operations in the Wildland/Urban Interface  
S-219 - Firing Operations  
S-230 - Crew Resource Boss (Single Resource)  
S-231 - Engine Resource Boss (Single Resource)  
L-280 - Followership to Leadership  
L-954 - Safety Officer



Trainee opportunities were provided to allow participants to gain real-world, hands-on experience in carrying out particular ICS duties. Training was provided as noted in the following table.

<b>Command &amp; General Staff</b>	Incident Commander IC(t)
	Safety Officer SOFR(t)
	Public Information Officer PIO(t)
	Liaison Officer LOFR(t)
<b>Operations</b>	Operations Section Chief OSC2(t)
	Division/Group Supervisor DIVS
<b>Plans</b>	Plans Section Chief PSC2(t)
	Resource Unit Leader RESL(t)/ Demo Unit Leader DMOB(t)
	Situation Unit Leader SITL(t)
	Status/Check-in Recorder SCKN(t)
<b>Logistics</b>	Logistics Section Chief LSC2(t)
	Supply Unit Leader SUPL(t)
	Receiving/Distribution Manager RCDM(t)
	Ordering Manager ORDM(t)
	Ground Support Unit Leader GSUL(t)
	Equipment Manager EQPM(t)
	Facilities Unit Leader FACL(t)
	Base Camp Manager BCMG(t)
	Communication Unit Leader COML(t)

Northeast Forest Fire Protection Compact

New York State is a member of the Northeast Forest Fire Protection Compact, a Congressionally-chartered entity comprised of New York, the New England states and six Canadian providences, in which all members agree to provide mutual aid to one another in actual wildfire responses and cooperate in various wildfire prevention, mitigation and training efforts. The Academy is exploring additional training programs with a number of individual members.



## **Litigation Involving the Pine Barrens Commission**

*November 15, 2016; listed by filing date.*



**Litigation Involving the Pine Barrens Commission**

*November 15, 2016; listed by filing date.*

<b>Sequence Number</b>	<b>Subject</b>	<b>Plaintiff(s)</b>	<b>Defendant(s)</b>	<b>Court and Index Number</b>	<b>Date Filed</b>	<b>Date Decided</b> (available online at <a href="http://pb.state.ny.us/legal/chart_litigation.htm">http://pb.state.ny.us/legal/chart_litigation.htm</a> )
1	Nondevelopment decision of 2/9/94 re Longwood Youth Sports Association proposal at Firemen's Park, Ridge, Brookhaven	LI Pine Barrens Society, Richard Amper, North Fork Environmental Council, Long Island Group of the Sierra Club, Open Space Council, Act Now!, Desiree Passantino, Joseph Colao	Commission	Supreme Court, Suffolk County 94-5363	3/11/94	4/28/98 <a href="#">(decision)</a>
2	Parcel inventory and property owner notification	W.J.F. Realty Corp., Reed Rubin	Commission	Supreme Court, Suffolk County 94-8132	4/8/94	11/17/94 <a href="#">(decision)</a>
3	Statutory challenge to Pine Barrens Protection Act	W.J.F. Realty Corp., Reed Rubin	Commission, State of New York, Langdon Marsh, NYS DEC, Suffolk County	Supreme Court, Suffolk County 94-22784	9/19/94	4/22/98 <a href="#">(decision)</a>
4	Economic analysis	LI Builders Institute	Commission	Supreme Court, Suffolk County 95-11218	5/12/95	5/22/95 <a href="#">(decision)</a>
5	Parcel inventory	Siegel Fenchel & Peddy	Commission, Raymond Corwin	Supreme Court, Suffolk County 95-29078	12/6/95	4/18/97 <a href="#">(decision)</a>
6	Statutory challenge to Pine Barrens Protection Act	Henry Dittmer, et al.	Commission, Suffolk County, Brookhaven Town, Riverhead Town	US District Court for Eastern District of NY 96-2206	5/3/96	2/21/02 <a href="#">(decision)</a> <i>(Also see 2/28/03 2nd Circuit Summary Order)</i>
7	Commission approval of 8/26/96 re Marando (Manorville) Nurseries project, Brookhaven	LI Pine Barrens Society, Richard Amper, Peter Maniscalco, John Scully, Leslie Hannelin	Commission	Supreme Court, Suffolk County 96-24091	9/18/96	2/10/98 <a href="#">(decision)</a>
8	6/24/98 Pine Barrens Credit allocation to parcels in Manorville and Middle Island, Brookhaven	Robert I. Toussie	Commission	Supreme Court, Suffolk County 98-17135	7/22/98	5/26/1999 <a href="#">(decision)</a>
9	Nondevelopment decision of 5/10/00 re horse	LI Pine Barrens Society,	Commission, Carolyn Jolly d/b/a Hidden	Supreme Court, Suffolk	8/8/00	3/19/01 <a href="#">(decision)</a> Entered 11/20/01

	arena in Core, Manorville, Brookhaven	Richard Amper, Katherine Forster Screven, Frank P. Foster, John Trocchio, Richard and Pamela Gatz, Anna Marie Forster Czarnecki, Pamela Todaro	Pond Stables	County 00-14222		
10	Nondevelopment decision of 7/12/00 re horse arena in Core, Manorville, Brookhaven	LI Pine Barrens Society, Richard Amper, Kenneth and Irene Kneski, Stanley and Genevieve Horton	Commission, Sloane Marcus, Maria Hickey	Supreme Court, Suffolk County 00-19896	8/9/00	3/20/01 <i>(decision)</i> Entered 6/11/01
11	Statutory challenge to Pine Barrens Protection Act	Walter Olsen, et al.	NYS DEC, et al.	Supreme Court, Albany County 01-3600	6/22/01	5/7/02 <i>(decision)</i> <i>(Also see 7/24/03 3rd Department Decision)</i>
12	Statutory challenge to Pine Barrens Protection Act	Gladys Gherardi et al.	State of NY, et al.	US District Court for Northern District of NY; 01-1066	6/28/01	12/11/03 <i>(decision)</i> <i>(Also see 12/22/05 2nd Circuit Summary Order)</i>
13	7/10/02 Firemen's Park Core hardship permit, Ridge, Brookhaven	LI Pine Barrens Society, Richard Amper, Carole Jones, Paul J. Decker, Eric Burke, Yolanda Susi, Joseph P. Walsh, Kim Darrow	Commission, Brookhaven Town Parks Department, Joseph Callari, Frank Vigliarolo	Supreme Court, Suffolk County 02-20643	8/7/02	2/26/03 (amended decision) <i>(decision)</i>
14	Assertion of jurisdiction of 3/20/02 re Spring Meadow subdivision, Wading River, Brookhaven	Spring Meadow Enterprises	Commission	Supreme Court, Suffolk County 02-20765	8/9/02	2/11/03 <i>(decision)</i>
15	Field Day Music Concert, Calverton, Riverhead	LI Pine Barrens Society, Richard Amper, Neighborhood Network Research Center, Neil Lewis, North Fork Audubon Society, Mary Mulcahy, North Fork Environmental Council, Howard Meinke, North	Riverhead Town, Riverhead Town Community Development Agency, Suffolk County Health Department, Commission, New York Music Festival, Andrew Dreskin, Andrew	Supreme Court, Suffolk County 03-13625	5/27/03	5/30/03 <i>(decision)</i>

		Shore Audubon Society, Jennifer Wilson Pines, Open Space Now, Alex Wipf, Wayne Rambo, Scott Neary, Margaret Caputo, Robert and Joyce Moss, Louis Fastore	Dreskin Investments			
16	Development decision of 6/21/06 re clearing for agriculture in Core for Manorville Estates Winery, Brookhaven	Gladys Gherardi	Commission	Supreme Court, Suffolk County 06-17693	7/19/06	8/1/07 <i>(<a href="#">decision</a>)</i>
17	Southaven County Park trap and skeet range, Yaphank, Brookhaven	LI Pine Barrens Society, Richard Amper, South Yaphank Civic Association, Johan McConnell, John Del Buono, Howard Carpluk Sue Davis, Douglas Steigerwald	Commission, Suffolk County, Hunter Sports Shooting Grounds	Supreme Court, Suffolk County 06-22354	8/11/06	5/2/07 <i>(<a href="#">decision</a>)</i> <i>(Also see 10/7/08 2nd Department <a href="#">decision</a>)</i>
18	Assertion of jurisdiction of 7/19/06 re Island Water Park, Calverton, Riverhead	Island Water Park Corp., Eric Scott	Commission, Town of Riverhead	Supreme Court, Suffolk County 06-21016	8/17/06	4/3/07 <i>(<a href="#">decision</a>)</i>
19	Assertion of jurisdiction of 4/18/07 re Riverhead Town Recreational Facility, Calverton, Riverhead	Riverhead Town, Riverhead Community Development Agency	Commission	Supreme Court, Suffolk County 07-14186	5/3/07	1/30/08 <i>(<a href="#">decision</a> and 3/31/08 judgment)</i> <i>(Also see 3/2/10 2nd Department <a href="#">decision</a>)</i>
20	Pine Barrens Credit allocation to parcel in Southampton	Edwin Tuccio, Patricia Tuccio	Commission, Clearinghouse	Supreme Court, Suffolk County 07-21497	7/19/07	1/16/08 <i>(<a href="#">decision</a>)</i> <i>(Also see 11/4/09 2nd Department <a href="#">decision</a>)</i>
21	Pine Barrens Credit allocations to parcels in Manorville (Brookhaven)	Ringhoff Family LLC #1	Commission	Supreme Court, Suffolk County 08-26991	7/17/08	4/8/09 <i>(<a href="#">decision</a>)</i>
22	Commission jurisdiction re development proposal	Robert Liere, John Liere, and Lorraine Liere	Commission	Supreme Court, Suffolk County 09-5910	3/12/09	10/13/10 <i>(<a href="#">decision</a>)</i>
23	Article 78	County of	Commission	Supreme	6/16/10	4/28/11



		Suffolk		Court, Suffolk County 21807/2010		<i>(decision)</i>
24	American Physical Society hardship permit, Ridge, Brookhaven	LI Pine Barrens Society, Richard Amper	Commission	Supreme Court, Suffolk County 29130/2010	7/21/10	9/26/11 <i>(decision)</i>
25	Article 78	Edwin Fishel Tuccio, Patricia Tuccio	Commission	Supreme Court, Suffolk County 28576/2010	9/20/10	1/12/12 <i>(decision)</i> <i>(Also see 1/15/14 2nd Department decision)</i>
26	Failure to process plaintiff's as of right subdivision application	Brush Development LLC	Town of Brookhaven, Commission	US District Court for Eastern District of NY CV-113297	7/8/11	pending
27	JCJC Holding Company hardship permit, Hampton Bays, Southampton	LI Pine Barrens Society, Richard Amper	Commission	Supreme Court, Suffolk County 22619/2011	2/16/12	3/22/12 <i>(decision)</i> <i>(Also see 1/29/14 2nd Department decision)</i>
28	Article 78	Wainscott Properties Inc.	New York State Department of Environmental Conservation, Commission	Supreme Court, Suffolk County 12-27600	9/6/12	11/13/13 <i>(decision)</i>
29	Westhampton Property Associates hardship permit, Speonk, Southampton	LI Pine Barrens Society, Richard Amper, Robert McGrath, Thomas Casey as members of the Board of Directors	Commission	Supreme Court, Suffolk County 12-34735	12/31/12	2/27/14 <i>(decision)</i> <i>(Also see 4/20/16 2nd Department decision)</i>
30	Pine Barrens Credit Program	Pluralis, LLC	Commission, Town of Brookhaven	Supreme Court, Suffolk County 13-15979	6/19/13	11/4/14 <i>(decision)</i>
31	Article 78	Equine Facility, LLC, Carolyn Jolly, and James P. Eagan	Commission, New York State Department of Environmental Conservation, State of New York	Supreme Court, Suffolk County 16-01258	2/4/16	9/29/16 <i>(decision)</i>
32	Article 78	Henry R. Dittmer	Commission	Supreme Court, Suffolk County 16-02657	3/11/16	pending
33	Article 78	Armand Gustave, LLC c/o Peter Baron	Commission	Supreme Court, Suffolk County 16-6671	7/11/16	11/7/16 <i>(decision)</i>
34	Article 78	Antro Realty Corp.	Commission	Supreme Court, Suffolk County 16-09916	10/17/16	pending

## Central Pine Barrens Commission Staff & Areas of Responsibility

Administration	John W. Pavacic, Executive Director Judy Jakobsen, Policy & Planning Manager Carol Sholl-Ostrowski, Administrative Assistant Kathy Delligatti, Academy Coordinator
Communications	Tim Motz, Director of Communications
Compliance & Enforcement Law Enforcement Council	Lawrence Hynes, Timothy Huss, Michael Lewis & James Mazzio, Compliance & Enforcement Coordinators
Education & Outreach	Melissa Griffiths Parrott, Environmental Education & Outreach Coordinator
Land Use & Planning Advisory Committee	Julie Hargrave, Principal Environmental Planner
Legal	John Milazzo, Esq., Attorney
New York Wildfire & Incident Management Academy	Kathy Delligatti, Academy Coordinator John W. Pavacic, Executive Director
Pine Barrens Credit Program	Jerry Tverdy, Senior Environmental Analyst
Science & Stewardship Protected Lands Council	Ann Carter, Science & Stewardship Coordinator Polly Weigand, Ecologist
Wildfire Task Force	Kathy Delligatti, Academy Coordinator Judy Jakobsen, Policy & Planning Manager Lawrence Hynes & Timothy Huss, Compliance & Enforcement Coordinators



### Office Location & Contact Information

624 Old Riverhead Road (CR 31)  
Westhampton Beach, NY 11978  
Main Telephone: 631-288-1079  
Fax: 631-288-1367

Office & Library Hours  
Monday – Friday 8:30 am to 5:00 pm

Ray Corwin Pine Barrens Reference Library  
(open to public by appointment, non-lending)  
<https://pb.state.ny.us>    [info@pb.state.ny.us](mailto:info@pb.state.ny.us)