



## **2022 Spring New York Wildfire and Incident Management Academy**

In March 2022, the Academy held the following classes:

- S-130/190 5 day – Firefighting Training/Intro. To Wildland Fire Behavior
- S-130/190 Field days only – Firefighting Training/Intro. To Wildland Fire Behavior
- S-131 – Firefighter Type 1
- S-211 – Portable Pumps & Water Usage
- S-212 – Wildfire Chainsaws with Storm Debris Removal
- S-219 – Firing Operations
- S-330 – Task Force/Strike Team Leader
- S-420 – Command and General Staff
- ATV – All-terrain vehicle and driver operations
- UTV – Off-highway Vehicle Basic Driver Course

The spring Academy was held at Stony Brook Southampton University. The University offered NYWIMA the facility at no charge to the Academy and were extremely accommodating and helpful. A total of 10 classes were held with a total of 120 students in attendance and 12 instructors.

The 2022 Fall New York Wildfire & Incident Management Academy will be held October 20 – 30, 2022. Planning and coordination for the fall Academy has begun. The location has not been determined as of yet.

## *Education and Outreach Division*

### *May 2022 Update*

*Submitted by Melissa Griffiths Parrott, Education and Outreach Coordinator*

#### **1. School Programs**

- Virtual and in person outreach programs (Climate Change, Pine Barrens Ecology, Biodiversity, Barrens to Bay, and A Day in the Life:

##### ***Schools/Libraries/Groups:***

- Bay Avenue Elementary- 100
- Woodhull Elementary-125
- Sayville HS - 21
- Seatuck Association - 30
- Southampton Library- Climate Change on LI and a case for Optimism-30
- Setauket Elementary – 65

#### **2. Barrens to Bay Summer Camp @ Wertheim Wildlife Refuge**

- June 27<sup>th</sup> -August 12<sup>th</sup>
- **Camp 100% booked up!**
- New programming and activities planned this year
- Assisting with the implementation of a procedural document and MOU with the Friends of Wertheim

#### **3. A Day in the Life 2022**

- Spring Teacher training complete – 4/25/22
- Summer Training is scheduled for mid-August. To train on data collection and Data retrieval, including Survey 123 and Arc GIS
- 2022 dates below, all in person:

**Carmans River~ September 23**

**Greens Creek~ September 23**

**Gardiner County Park~ September 23**

**Massapequa Preserve~ September 30**

**Fire Island~ September 30**

**Nissequogue River~ October 7**

**Carlls River~ October 14**

**Forge River~ October 14**

**Peconic Estuary~ October 21**

**Connetquot River~ October 28**

**Mill River~ November 4**

#### **4. Cooperators Lunch**

- **CPBC video** - Filming, editing, and co-creating content for short 10-15 minute A Day in the Life video of what staff do at the Commission on a day-to-day basis
- Working in coordination with Tim Motz, writer, and director of video
- Identifying partner groups to bring exhibits on organization/agencies and our partnership programs
- Assisting with overall coordination of event



## Science and Stewardship Division Update May 18, 2022

### Administrative:

- Erich Horn, Squad Boss has been accepted into the NYSDEC Forest Ranger Academy. We wish Erich much success as he pursues this next professional endeavour and recognize his numerous contributions to the prescribed fire program. Erich is a natural leader and mentor who has been instrumental in his short time with the Commission in helping ensure preparedness for spring prescribed fire operations and program expansion in notable ways including outfitting the mobile cache trailer, storage facilities and UTV engines allowing for maximal access and ensured organization and accounting of the equipment and vehicles. He supervised the prescribed fire crew daily; mentored Division staff in various capacities to help expand and strengthen skills related to trailering, prescribed fire implementation, UTV/ATV operation, and other standard operating procedures and led his prescribed fire squads professionally and skillfully. We are confident that Erich will be a highly accomplished and valued asset to the Department of Forest Protection and look forward to addressing him as Ranger Horn the next time we have the opportunity to work with him.
- The Fire Management Specialist has continued to be advertised both through SCWA and Commission outlets as well as national job boards.

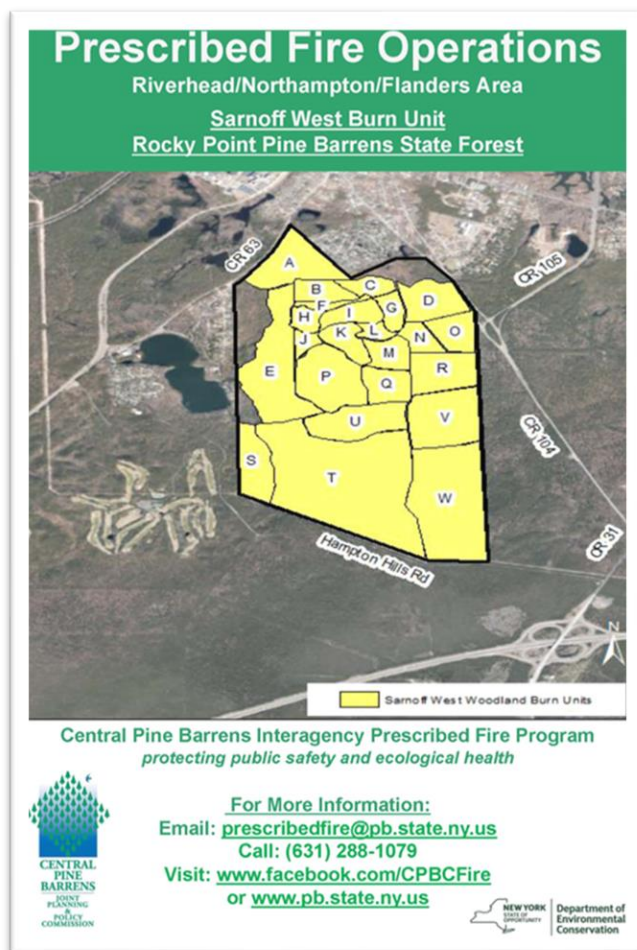


### Prescribed Fire Program:

- *Administration:*
  - Quarterly vouchers continue to be processed to receive reimbursement of expenses incurred and ensure access to the balance of funds to be used for prescribed fire planning and implementation.
  - Annual budget and workplan for the last year of the prescribed fire contract is being finalized. A continuity budget is also being finalized as continued funding of the fire program is anticipated.
- *Planning:*
  - Sarnoff West prescribed burn plan and the associated SEQRA review process has been finalized allowing for prescribed fire operations to commence in this unit in May.
  - The Dwarf Pine Prescribed Fire Enhancement Zone burn plan for the Westhampton Pine Barrens State Forest is in internal review within the Central Pine Barrens Commission. This plan covers 633 acres with eleven burn units.
  - Otis The Pike State Forest/Upton Reserve Burn Unit is currently in development and will encompass the largest area of treatment with a total of 4252 acres. This landscape focused plan is also the first that covers both NYSDEC (3492 acres) and the remaining acreage encompassing federal lands at Brookhaven National Lab. This land area is unique as it has one of the highest diversity of ecosystems as well as the highest level of wildfire activity of the Central Pine Barrens, allowing for the majority prescribed fire operations to advance in areas with limited need for mechanical treatment/fuels management prior to applying prescribed fire.

- *Equipment Storage and Purchasing:*
  - Equipment purchases continue as operations determine additional needs.
  - Pumps, hoses, mop up wands and fold-a-tanks have been received and utilized for supportive hose lays on prescribed fire operations.
  - The Cargo trailer has been retrofitted as the portable prescribed fire cache which allows for the transport of hoses, fold-a-tanks, accessories and other equipment to facilitate operations.
  - The UTV trailers have been received, registered and fitted with new cargo straps are being used to transport the two UTV Type 7 Engines. Both these and Ranger UTV have been outfitted and utilized for prescribed fire operations and patrol.
  - Focus on outfitting the Fire Engine and securing insurance continues in partnership with Forest Protection and Forest Health.

- *Education and Outreach:*
  - A press release announcing the expanded prescribed fire program implementation in Rocky Point and David Sarnoff Pine Barrens State Forests received comprehensive coverage by numerous news outlets including [News 12](#), [East End Beacon](#), [Express News Group](#), and the [Patch](#) which is important to notify the public of our upcoming operations and increase the awareness of prescribed fire in helping reduce wildfire risk and improving forest health.



- Pre-operation outreach notifications are being conducted prior to planned prescribed fire operations. A map of the unit and notification language to fire departments, Town Representatives, and Civic and Homeowner Associations such as that illustrated for Sarnoff West Burn Unit are provided in order to readily inform their constituents of the pending operation. The notifications can be easily posted to social media or printed and posed. To further communicate with the public on operations, the Commission also issues these operational posts to our social media accounts when an operation is tentatively anticipated. The final Go-No Go determination is made the day of by the Burn Boss reflective of the prescription, current conditions, staffing and other considerations.
- *Prescribed Fire Operations:*
  - Spring burn season has been very successfully equipped and staffed by Division staff including the prescribed fire squad; NYSDEC staff including Forest Ranger staffed modules from off the island; Brookhaven National Lab staff and NYSDEC volunteers. The bolstered staffing and new equipment especially the Type 7 Engines has been integral to conducting a higher number of prescribed fires as well as expanding from grassland to forest treatments. In addition there has been increased training opportunities, increased experience gained and expanded professional development across prescribed fire staffing.





- Over 300 acres of grassland burn treatments within Otis Pike, Eastport and Rocky Point Pine Barrens State Forests have been conducted this spring, which is the highest number of grassland acres treated in one season.
- As of May 5<sup>th</sup>, the Commission successfully conducted three forest understory prescribed burns totaling 20 acres within the South Currans Woodlands Burn Unit in Rocky Point Pine Barrens State Forest.
- The 3<sup>rd</sup> operation conducted in the South Currans Woodlands Burn Unit on April 25 was successfully implemented and then was patrolled for seven days by Commission and NYSDEC staff. On the April 28<sup>th</sup> patrol, NYSDEC Forest Ranger Gallagher noticed that a hot spot had reignited, and an “escape” fire had occurred onto adjacent private property. Following procedures outlined in the burn plan, DEC Forest Ranger requested assistance to contain the escape from the Middle Island Fire Department. The escape burned 0.8 acres in privately owned undeveloped forest and was contained within 15 minutes of arrival of the additional resources. Thereafter, the NYS DEC and Commission prescribed fire crew continued monitoring and mop up (actively extinguishing all hot spots) of the burn and escape Thursday evening and all-day Friday until it was declared out on Monday May 1<sup>st</sup> after a wetting rain. Ranger Gallagher toured the site on Friday with the private landowner who was not aware he owned the property of the escape until Ranger Gallagher showed him the State DEC boundary. An onsite after-action review was conducted by the prescribed fire crew present concerning the burn and escape and appropriate notifications were made. Additional after-action reviews were conducted with Commission and NYSDEC prescribed fire staff and agency representatives to discuss the details of what occurred and any potential additional precautions that may be appropriate to implement in the future.
- In May, prescribed fire operations will continue within South Currans Woodlands and move into Demonstration Forest I of Rocky Point Pine Barrens State Forest as well as David Sarnoff Pine Barrens State Forest in Riverside and then onto Brookhaven National Lab lands in June.

## **Community WISE Program:**



- *Planning:*
  - Ecological Field Specialist, Sabrina Cohn is helping coordinate this US Forest Service funded program which Judy Jakobsen initiated in November 2016. The program's goal is the promotion of wildfire ignition safety and mitigation measures that can help reduce the risk of wildfire associated losses for homes and businesses within the Ridge-Calverton-Manorville Community Wildfire Protection Plan.
- *Home Assessments and Outreach:*
  - Social media postings were drafted and issued for National Fire Protection Association's Wildfire Preparedness Day (May 7<sup>th</sup>) to help increase the public's awareness of the importance and means by which to make improvements to their homes and landscapes for purposes of wildfire protection. This is critically important proactive messaging to encourage action on behalf of homeowners as wildfires are not an if but a when in the fire prone Central Pine Barrens.
  - Four additional home assessments have been conducted in the last two months, bringing the total of homes that have been evaluated for wildfire prevention to 11. The reports are being drafted and will be delivered to the homeowners to allow for their review and implementation of the findings to help improve the resiliency of these homes and properties in the face of wildfire. Mitigation funding, provided to help offset the cost of improvements recommended within the home assessments, remains available through the cost share funding provided by the USFS Grant.

## **Southern Pine Beetle (SPB):**

- **Surveying and Suppression:** Statewide SPB Incident Command System continues to be coordinated by NYSDEC's Forest Health Unit. Surveying and suppression cutting have commenced this spring.
- Ms. Weigand presented on forest health management operations that have been occurring in the Central Pine Barrens at a Southern Pine Beetle Virtual Workshop hosted by the Northeast Fire Science Exchange/ US Forest Service for land managers in the northeast. Over 100 people attended this very well coordinated and informative meeting that is integral to helping protect northeastern forests from the effects of southern pine beetle.

## **Invasive Species Management:**

- USFS/NYSDEC Early Detection Rapid Response Non-Native Bark and Ambrosia Beetle monitoring program (NBBT): For the third year, the Division is participating in NBBT to monitor and detect emerging non-native beetles within the Central Pine Barrens. This study which runs from April through June in Calverton helps to monitor for these species that may have been inadvertently introduced through trade and detect potentially problematic species early while eradication is still feasible.
- Spotted Lanternfly, caper spurge, Japanese stiltgrass as well as other invasive species are on the forefront of monitoring and management as we roll into field operations.

## **Encroachment Restoration:**

- Division staff continues to provide restoration recommendations and provide technical assistance to the NYS Attorney General's office regarding a violation in Eastport.
- A draft Request for Proposal (RFP) is being reviewed to solicit, vet and secure contractors for performing restoration work at existing and future encroachment and violation sites.



**Central Pine Barrens Joint Planning and Policy Commission Meeting**  
**Wednesday, May 18, 2022**  
**Riverhead Town Hall**  
**200 Howell Avenue**  
**Riverhead, NY**  
**Hybrid in-person and Zoom Meeting**

**Draft Resolution of the Central Pine Barrens Joint Planning and Policy Commission (“Commission”) Authorizing the Renewal of Prescribed Fire Insurance Policy in Support of the Commission’s Prescribed Fire and Forest Management Programs**

Present: \_\_\_\_\_ (for the Suffolk County Executive)  
\_\_\_\_\_ (Brookhaven Town Supervisor)  
\_\_\_\_\_ (Riverhead Town Supervisor)  
\_\_\_\_\_ (Southampton Town Supervisor)

**Yvette Aguiar**  
*Member*

**Steven Bellone**  
*Member*

**Edward P. Romaine**  
*Member*

**Jay H. Schneiderman**  
*Member*

**Whereas**, pursuant to Article 57 of the New York State Environmental Conservation Law, the Commission is authorized to obtain and maintain insurance, and

**Whereas**, on October 17, 2018 the Commission accepted a State of New York grant which provides a five-year total award to the Commission of \$1.25 million to develop, establish, implement and lead a prescribed fire management program on public lands in the Central Pine Barrens, and

**Whereas**, as part of the grant agreement, the Commission is required to obtain additional insurance to cover the grant activities and the State allows the cost of such insurance to be charged to said grant, and

**Whereas**, the additional insurance coverage that has been identified as necessary for the Commission to undertake the Prescribed Fire Program is a stand-alone Prescribed Fire Liability policy, and

**Whereas**, Hometown Insurance Agency serving as the insurance broker for AXIS Surplus Insurance Company, currently provides Prescribed Fire Liability insurance that is due for its yearly renewal at a cost of \$45,456.12, which is the same cost as last year, now, therefore, be it

**Resolved**, that the Commission hereby authorizes the renewal of the aforesaid insurance policy for Prescribed Fire Liability insurance in the amount of \$45,456.12 and authorizes this expenditure to be charged to and reimbursed through the Commission’s Prescribed Fire grant and be it further

**Resolved**, the Commission authorizes the Executive Director to execute any and all documents necessary to effect these coverages.

624 Old Riverhead Road  
Westhampton Beach, NY  
11978

Phone (631) 288-1079  
Fax (631) 288-1367  
[www.pb.state.ny.us](http://www.pb.state.ny.us)

**Motion by:** \_\_\_\_\_  
**Second by:** \_\_\_\_\_  
**Ayes:** \_\_\_\_\_  
**Nays:** \_\_\_\_\_  
**Abstentions:** \_\_\_\_\_  
**Absent:** \_\_\_\_\_

**NOTICE OF EXCESS LINE PLACEMENT**

Date: **MAY OF 2022**

Consistent with the requirements of the New York Insurance Law and Regulation 41  
Central Pine Barrens Joint Planning and Policy Commission \_\_\_\_\_ is hereby advised that all or a portion of the required coverages have been placed by Hometown Insurance Agency of LI with insurers not authorized to do an insurance business in New York and which are not subject to supervision by this State. Placements with unauthorized insurers can only be made under one of the following circumstances:

- a) A diligent effort was first made to place the required insurance with companies authorized in New York to write coverages of the kind requested; or
- b) NO diligent effort was required because i) the coverage qualifies as an "Export List" risk, or ii) the insured qualifies as an "Exempt Commercial Purchaser."

Policies issued by such unauthorized insurers may not be subject to all of the regulations of the Superintendent of Insurance pertaining to policy forms. In the event of insolvency of the unauthorized insurers, losses will not be covered by any New York State security fund.

**TOTAL COST FORM (NON TAX ALLOCATED PREMIUM TRANSACTION)**

In consideration of your placing my insurance as described in the policy referenced below, I agree to pay the total cost below which includes all premiums, inspection charges<sup>(1)</sup> and a service fee that includes taxes, stamping fees, and (if indicated) a fee<sup>(1)</sup> for compensation in addition to commissions received, and other expenses<sup>(1)</sup>.

I further understand and agree that all fees, inspection charges and other expenses denoted by<sup>(1)</sup> are fully earned from the inception date of the policy and are non-refundable regardless of whether said policy is cancelled. Any policy changes which generate additional premium are subject to additional tax and stamping fee charges.

Re: Policy No.

Insurer

Policy Premium	\$	39,800.00
<b><u>Insurer Imposed Charges:</u></b>		
Policy Fees <sup>(1)</sup>	\$	150.00
Inspection Fees <sup>(1)</sup>	\$	1,000.00
<b>Total Taxable Charges</b>	<b>\$</b>	<b>_____</b>
 <b><u>Service Fee Charges:</u></b>		
Excess Line Tax (3.60%)	\$	1,438.20
Stamping Fee	\$	67.92
Broker Fee <sup>(1)</sup>	\$	3,000.00
Inspection Fee <sup>(1)</sup>	\$	_____
Other Expenses (specify) <sup>(1)</sup> _____	\$	_____
<b>Total Policy Cost</b>		<b>\$ <u>45,456.12</u></b>

\_\_\_\_\_  
 (Signature of Insured)

<sup>(1)</sup> = Fully earned



# AXIS Surplus Insurance Company

## Environmental Proposal

**Named Insured:** Central Pine Barrens Joint Planning and Policy Commission

**Issued Date:** May 5, 2022

**Policy Term:** One Year

**Coverage(s):**

Commercial General Liability  
Contractors Pollution Liability

**Limit(s):**

Policy Aggregate Limit for All Claims and Damages: \$2,000,000  
Policy Aggregate Limit for All Claims Expenses: \$2,000,000

**Commercial General Liability**

Each Occurrence: \$1,000,000 ✓  
General Aggregate: \$2,000,000 ✓  
Products-Completed Operations Aggregate: \$2,000,000  
Personal and Advertising Injury: \$1,000,000  
Medical Expense: \$10,000  
Damage to Premises Rented to You: \$100,000

**Contractors Pollution Liability**

Each Claim: \$1,000,000 ✓  
Aggregate: \$2,000,000  
Each Claims Expense: \$1,000,000  
Aggregate Claims Expense: \$2,000,000

**Deductible:**

Commercial General Liability \$25,000 per Occurrence  
Contractors Pollution Liability \$25,000 per Claim

**Premium (Minimum & Deposit): \$39,800**

*(A 25% minimum earned premium will apply at inception)*

**Optional Terrorism Risk Insurance Act (TRIA) Premium: \$1,990**

*(TRIA is calculated at 5% of the policy premium subject to \$250 minimum)*

**Rate:** FLAT, Not Auditable



**Exposure Basis:** Revenue: \$250,000

**Policy Fee:** \$150

**Forms List:**

Declarations Page PGI EL 001 0918  
Signature Page AXIS 102 ASIC  
Notice to Policyholder AXIS001 0918  
Policyholder Notice AXIS NY 105 0316  
Service of Suit AXIS 106NY 0220  
State Fraud Statement AXIS NY 104 0415  
Schedule of Forms PGI EL 041 0210  
Commercial General Liability Coverage Form CG00011207  
Financial Interest Clause PGI PL 083 0518  
Employee and Benefits Liability Coverage CG04351207  
Additional Insured - Owners, Lessees or Contractors - Scheduled Person or Organization CG20100704  
Additional Insured - Owners, Lessees, or Contractors - Completed Operations CG20370704  
Employment - Related Practices Exclusion CG21470798  
Exclusion - Exterior Insulation and Finish Systems CG21861204  
Waiver of Transfer of Rights of Recovery Against Others To Us CG24041093  
Exclusion - Testing or Consulting E & O CG22330798  
Contractor's Pollution Liability Coverage Form – Occurrence PGI EL 004 0918  
Common Policy Conditions PGI EL 036 0210  
Mold, Mildew and Fungus Deductible PGI EL 009 0210  
Additional Insured Endorsement PGI EL 018 0210  
Primary and Non-Contributory Wording Endorsement PGI EL 020 0210  
Policy Aggregate Endorsement PGI EL 002 0210  
Waiver of Subrogation Endorsement PGI EL 019 0210  
Transportation of Cargo – Pollution Endorsement PGI EL 010 0921  
Designation of Surplus Lines Agent PGI PL 002  
Continuous or Progressive Injury & Damage Exclusion PGI EL 045 1112  
TCPA Exclusion PGI PL 074 1212  
Non-Owned Disposal Site Liability Coverage Endorsement (Blanket) PGI EL 064 0118  
Deductible Liability Insurance CG03000196  
Nuclear Incident Exclusion SLX-1008-01-14b  
Coronavirus Endorsement AXIS 1012679 0320  
Notice of Terrorism Insurance Coverage - TRIA Declined TRIA Declined Disclosure 0115  
U.S. Treasury Department's Office of Foreign Assets Control (“OFAC”) DE0010 1210

**Subjectivities:**

(Unless otherwise noted, these are due within 10 days of Binding)

PRIOR TO BINDING, we will require completed surplus lines form, including TRIA selection

Subject to most recent financials – Profit & Loss, Income Statement, or recent Tax Return

**Note:** Taxes, Fees and Filings (if applicable) are the responsibility of the broker.

**Issued By:**     AXIS Surplus Insurance Company  
                      (AM Best A Excellent) Non-Admitted

Please read all terms and conditions shown above carefully as they may not conform to the specifications shown in your submission. Coverage shall be subject to all terms and conditions of the policy to be issued which shall when delivered, replace the binder. This Quote is only valid for 30 days from the issue date listed.



## POLICYHOLDER DISCLOSURE

### NOTICE OF TERRORISM INSURANCE COVERAGE

You are hereby notified that under the Terrorism Risk Insurance Act, as amended (the "Act"), you have a right to purchase insurance coverage for losses resulting from acts of terrorism. As defined in Section 102(1) of the Act, the term "act of terrorism" means any act that is certified by the Secretary of the Treasury—in consultation with the Secretary of Homeland Security, and the Attorney General of the United States—to be an act of terrorism; to be a violent act or an act that is dangerous to human life, property, or infrastructure; to have resulted in damage within the United States, or outside the United States in the case of certain air carriers or vessels or the premises of a United States mission; and to have been committed by an individual or individuals as part of an effort to coerce the civilian population of the United States or to influence the policy or affect the conduct of the United States Government by coercion.

If, as a part of your policy, you also elect to purchase this terrorism coverage from us, you will be charged an additional premium of \$1,990.

YOU SHOULD KNOW THAT WHERE COVERAGE IS PROVIDED BY THIS POLICY FOR LOSSES RESULTING FROM CERTIFIED ACTS OF TERRORISM, SUCH LOSSES MAY BE PARTIALLY REIMBURSED BY THE UNITED STATES GOVERNMENT UNDER A FORMULA ESTABLISHED BY FEDERAL LAW. HOWEVER, YOUR POLICY MAY CONTAIN OTHER EXCLUSIONS WHICH MIGHT AFFECT YOUR COVERAGE, SUCH AS AN EXCLUSION FOR NUCLEAR EVENTS. UNDER THE FORMULA, THE UNITED STATES GOVERNMENT GENERALLY REIMBURSES 85% THROUGH 2015; 84% BEGINNING ON JANUARY 1, 2016; 83% BEGINNING ON JANUARY 1, 2017; 82% BEGINNING ON JANUARY 1, 2018; 81% BEGINNING ON JANUARY 1, 2019 and 80% BEGINNING ON JANUARY 1, 2020, OF COVERED TERRORISM LOSSES EXCEEDING THE STATUTORILY ESTABLISHED DEDUCTIBLE PAID BY THE INSURANCE COMPANY PROVIDING THE COVERAGE. THE PREMIUM CHARGED FOR THIS COVERAGE IS PROVIDED ABOVE AND DOES NOT INCLUDE ANY CHARGES FOR THE PORTION OF LOSS THAT MAY BE COVERED BY THE FEDERAL GOVERNMENT UNDER THE ACT.

YOU SHOULD ALSO KNOW THAT THE TERRORISM RISK INSURANCE ACT, AS AMENDED, CONTAINS A \$100 BILLION CAP THAT LIMITS U.S. GOVERNMENT REIMBURSEMENT AS WELL AS INSURERS' LIABILITY FOR LOSSES RESULTING FROM CERTIFIED ACTS OF TERRORISM WHEN THE AMOUNT OF SUCH LOSSES IN ANY ONE CALENDAR YEAR EXCEEDS \$100 BILLION. IF THE AGGREGATE INSURED LOSSES FOR ALL INSURERS EXCEED \$100 BILLION, YOUR COVERAGE MAY BE REDUCED.

### NOTICE TO BROKER

We are required by the [Terrorism Risk Insurance Act](#), as amended (the "Act"), to provide policyholders with clear and conspicuous disclosures. This notice must be provided at the time of offer and renewal of the policy.

We have provided you with a notice that meets the Act's requirements. You are instructed to deliver a copy of this notice to our prospective insured when you forward our quote.

*Includes copyrighted material 2015 National Association of Insurance Commissioners*





## Compliance and Enforcement Division Highlights January - April 2022 Prepared by Chief CAED Officer Tim Huss

- Fourteen complaint investigations documented to date (Clearing, dumping, and criminal mischief)
- Four confirmed dumping violations documented on CAED surveillance cameras.
- Compliance and Enforcement staff continue to utilize new GIS based data collection program to track locations, status of, and types of violations
- Enforcement staff monitoring easements and important development projects in Brookhaven and Southampton to assure compliance with Commission requirements
- Coordinating active clearing investigations with Towns of Brookhaven and Southampton
- Meetings held with LEC, County Parks, and other enforcement partners

Yvette Aguiar  
*Member*

Steven Bellone  
*Member*

Edward P. Romaine  
*Member*

Jay H. Schneiderman  
*Member*



624 Old Riverhead Road  
Westhampton Beach, NY  
11978

Phone (631) 288-1079  
Fax (631) 288-1367  
[www.pb.state.ny.us](http://www.pb.state.ny.us)

Incident Statistics - Reporting Period 01/01/20 – 5/03/22			
Year	2020	2021	2022
<b>Intake</b>			
Sent by Agency to Commission	26	11	2
Discovered by Commission Staff	37	48	9
Called in by Individual to Commission	14	12	3
Total Incidents Reported	78	71	14
<b>Location of Incident</b>			
Brookhaven	55	54	11
Southampton	15	10	3
Riverhead	4	6	0
Occurring on Public Land	27	26	5
Occurring on Private Land	25	35	8
Occurring on Public & Private Land	2	10	1
Core	46	35	8
CGA	16	18	5
Core & CGA	1	0	1
Outside CPBA	15	18	
<b>Nature of Incident*</b>			
Clearing/Encroachment	29	24	7
Structures	2	0	0
Dumping	36	35	4
Mining	0	1	0
Hunting	1	1	0
ATV	6	2	0
Other	4	8	3
*note some incidents involve more than one land use issue			
<b>Referrals*</b>			
Sent to Town	9	17	5
Sent to County	8	17	3
Sent to State	22	16	2
Commission	26	21	4
Sent to AG	0	0	0
Other	12	0	0
*note some incidents are sent to multiple agencies			
<b>Status</b>			
Founded	77	60	14
Unfounded	1	11	0
Open	35	39	13
Closed	43	32	1
Conservation Easement Inspections			
Development project inspections			1
			2

**Central Pine Barrens Joint Planning and Policy Commission**  
 Land Use Division Bi-Monthly Update for the Meeting of Wednesday, May 18, 2022

Action	Central Pine Barrens Location			
	Municipality	Town of Brookhaven	Town of Riverhead	Town of Southampton
<b>Applications and Requests for Determination of Jurisdiction</b>		<ul style="list-style-type: none"> <li>59 Ryerson Ave Subdivision CGA Hardship waiver application, two lot substandard subdivision on 0.8 acres. Hearing 7/20/22.</li> <li>Tommasino CGA Hardship Waiver Application. Hearing 6/15/22</li> <li>Determination: Eastport South Manor Central School District proposals for solar carports, cell tower, artificial turf and expansion at high school.</li> </ul>	<ul style="list-style-type: none"> <li>Finks Country Farm CGA Hardship Waiver Application. Hearing 6/15/22.</li> </ul>	-----
<b>SEQRA Coordination, referrals, land use inquiries and activities</b>		<ul style="list-style-type: none"> <li>Town Referral: Expressway Drive North, formerly Silver Corporate Park DRS, 3-lot industrial subdivision for 550,000 sf on 71 acres.</li> <li>Town Referral: Oak Run rezoning and development of 74 senior apartment complex on 23.56 acres.</li> <li>RD Industrial conservation easement.</li> </ul>	<ul style="list-style-type: none"> <li>Town Referral: 2013 River Road, former Warner Duck Farm property, Calverton.</li> <li>NYSDEC Referral: Peconic Paddler restaurant and hotel, Riverside.</li> </ul>	<ul style="list-style-type: none"> <li>Request for Determination. 2025 Flanders Road apartment, Flanders.</li> <li>Potential cell tower at junk yard in the Core, Flanders.</li> </ul>
<b>Regional Projects</b>	<ul style="list-style-type: none"> <li>Peconic Estuary Partnership - participation in technical committees.</li> <li>USGS-Commission Water Resources Monitoring Program, 2018 through 2022.</li> </ul>			
<b>Division Activity and Participation</b>	<ul style="list-style-type: none"> <li>Research, review and analyze new Core and CGA hardship waiver applications, SEQRA Coordination, interagency referrals, information requests and inquiries.</li> <li>Prepare material and responses for Commission review of development project activities and land use related items. Types of projects include commercial/industrial site plans, commercial and residential subdivisions, mixed-use projects, Developments of Regional Significance, Assertions of Jurisdiction, code amendments, zone changes and other actions.</li> <li>Site inspections pre- and post-construction, consent order compliance and monitoring of land use related activities and restoration on project sites and incidents/violations.</li> <li>Requests for Determination of Jurisdiction. Research and prepare materials for the Commission.</li> <li>FOIL Requests. Research and assist with FOIL requests and litigation on development projects.</li> <li>Technical support to the Compliance and Enforcement Division on land use matters including property information research on unauthorized development, clearing activities, encroachments on credit program conservation easements and other incidents.</li> <li>Supervise Credit Program staff.</li> <li>Collaborate and coordinate with other Commission divisions.</li> <li>SEQRA for the Draft Supplemental GEIS for the Comprehensive Land Use Plan Amendments.</li> </ul>			



***Pine Barrens Credit Program Report for May 18, 2022:***

Activities in the Credit Program (since January 1, 2022) included review of applications for Letters of Interpretation, Conservation Easements, Credit Program and FOIL requests management. Some specific work items include:

- Letters of Interpretation: Nine Letters of Interpretations were issued and four parcels were inspected in the Towns of Brookhaven and Southampton. Staff is following up on past LOIs for interest in the Program.
- Conservation Easements: Review and Monitoring
  - two easements were recently recorded
  - six easements are currently in progress
  - research and review of proposed activities on three easement properties for consistency with easement terms including reserved rights and covenants.
- Pine Barrens Credits
  - Redeemed: 34.08 Credits have been redeemed, 15.65 in the Town of Brookhaven, 6.33 in the Town of Riverhead and 12.1 in the Town of Southampton.
  - Conveyed: 23.99 Credits have been conveyed, 14.48 in the Town of Brookhaven, 4.5 in the Town of Riverhead and 5.01 in the Town of Southampton.
  - The average price is \$92,088 per credit.
- Order on Consent: The Ridge Church Order on Consent was executed on January 5, 2022. The three sheds and the stone were removed from the property, native pine barrens seed mix was planted and a split rail fence was installed to protect the site from future disturbance.
- Maps: The maps of DRS', CRAs and Assertions of Jurisdiction parcels, Core and CGA hardships, CGA overcleared and Industrial properties have been created.

<b>Easement Protected Lands and Pine Barrens Credits As of May 10, 2022</b>								
	Brookhaven	2022	Riverhead	2022	Southampton	2022	Total	2022
Parcels	513	1	37	-	454	1	1004	2
Acreage	819.57	5.02	516.78	-	850.05	0.96	2186.4	5.98
Average parcel size	1.60	5.02	13.97	-	1.87	0.96	2.18	2.99
Credits generated	540.5	2.01	172.39	-	331.82	0.20	1044.71	2.21
Credits redeemed	416.5	15.65	137.49	6.33	174.55	12.10	728.54	34.08
Credits not redeemed	124	-13.64	34.9	-	157.27	-11.9	316.17	-31.87
Credits sold	589.87	14.48	229.4	4.50	279.59	5.01	1098.86	23.99
Total value of PBC transactions through this date	\$32,540,169	\$1,456,750	\$8,563,247	\$332,500	\$18,950,242	\$419,940	\$60,053,658	\$2,209,190
Average Credits value		\$100,604		\$73,889		\$83,820		\$92,088
Credits owned by the Clearinghouse	0.54		-		-		0.54	
# of Inspected CE Parcels	-	16	-	-	-	-	-	16
# of Installed CE Sign	129	4	15	-	87	-	231	4





## **SUFFOLK COUNTY COMPTROLLER**

330 CENTER DRIVE RIVERHEAD, N.Y. 11901-3311

Telephone: (631) 852-1501 FAX (631) 852-1507

JOHN M. KENNEDY, JR.  
COUNTY COMPTROLLER

**May 3rd, 2022**

**Central Pine Barrens Joint Planning and  
Policy Commission  
P.O. Box 587  
Great River, N.Y. 11739-0587**

**Dear Pine Barrens Credit Clearinghouse  
Board of Advisors:**

**Attached please find our financial report on the Pine Barrens Credit Program for the  
month of April 2022. Thank you.**

**Respectfully submitted,**

*Christina M. Withers*

---

**Christina M. Withers, CIA, CPFO  
Executive Director of Finance & Taxation**

<b>Suffolk County Comptroller's Office The Pine Barrens Credit Program</b>	
Balance as of December 31st, 2021	\$2,551,999.78
Additional Deposits	0.00
Interest (see below for details)	832.15
Disbursements	0.00
<b>Balance as of April 30th, 2022</b>	<b>\$2,552,831.93</b>

**Interest Earnings & Disbursements  
For the Months of January - December 2021**

**Interest Earnings**

Premier MMA - Public Fund

January	216.75
February	195.79
March	216.79
April	202.82
May	0.00
June	0.00
July	0.00
August	0.00
September	0.00
October	0.00
November	0.00
December	0.00
	<u>\$832.15</u>

<u>Interest Period</u>	<u>APR</u>
01/01/22- 01/31/22	0.1000%
02/01/22- 02/28/22	0.1000%
03/01/22- 03/31/22	0.1000%
04/01/22- 04/30/22	0.1000%
05/01/22- 05/31/22	0.0000%
06/01/22- 06/30/22	0.0000%
07/01/22- 07/31/22	0.0000%
08/01/22- 08/31/22	0.0000%
09/01/22- 09/30/22	0.0000%
10/01/22- 10/31/22	0.0000%
11/01/22- 11/30/22	0.0000%
12/01/22- 12/31/22	0.0000%

**Disbursements**

<b>None</b>	<u>\$ -</u>
	<u>\$ -</u>