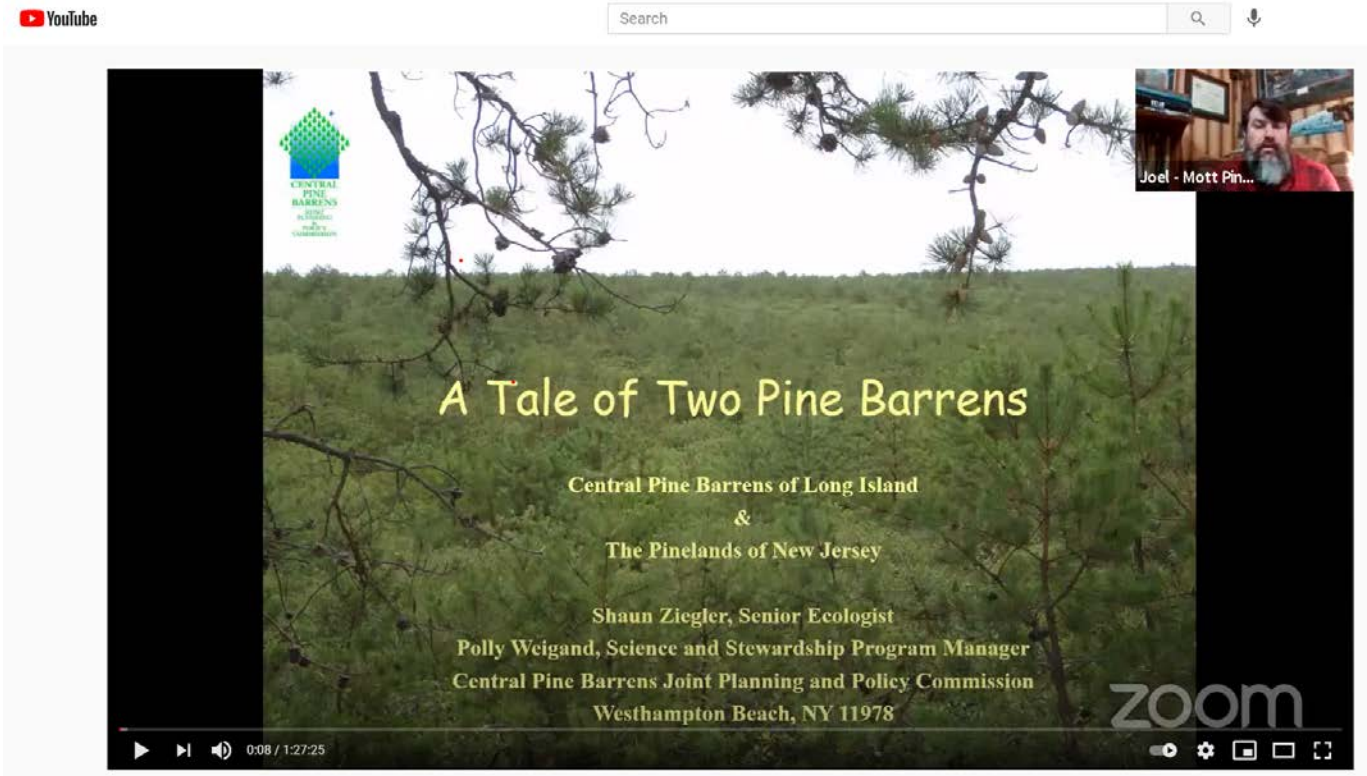




Science and Stewardship Division Update March 17, 2021

Administrative:

- A proposal for a grant through the United States Forest Service focused on special technology development was put forth by US Forest Service Durham office, University of Vermont and the Division. We received notification that our application ranked first at the regional level and has moved to the national level for funding consideration. This proposal would fund a graduate student and field research, management, and monitoring to better understand, develop, and improve restoration practices in pine forests after southern pine beetle outbreaks.



- A Tale of Two Pine Barrens, was presented live stream by Polly Weigand and Shaun Zielger as part of an educational services hosted by the Pinelands Commission on March 10. The presentation which was well received with 45 attendees, compared and contrasted the two ecosystems, their land use history and land protections. This is the second educational opportunity that the Commission has partnered with the New Jersey Pinelands Commission and it can viewed here: <https://www.youtube.com/watch?v=ZAzTZ89DDug>

Commission Prescribed Fire Program:

- **Administration:**
 - Voucher development and annual workplan revisions are ongoing in order to receive reimbursement of general expenses and salary incurred from July to December 2020.
 - Meetings have occurred with SCWA to outline and refine insurance exposure portfolios to solicit bids for overall general liability policies to include prescribed fire. Active work is ongoing to seek and secure appropriate insurance coverages.
 - A continuity budget is also being developed to ensure fire program continuance after Contract competition.

- **Planning:**

- **Meetings:** The standing bimonthly meeting with NYSDEC Region 1 and Forest Health was split into two meetings which occurred on February 4th and 18th in an effort to better accommodate NYSDEC schedules as many representatives are working at Covid-19 test and vaccination sites. These meeting covered a broad range of operational considerations and collaborative plans for the year as well as providing general updates on burn plan development and future implementation. Additional meetings on prescribed fire planning operations with NYSDEC for Demonstration Forest within the Rocky Point Pine Barrens State Forest also advanced this spring.
- **Prescribed Fire Management Plan:** The final CPB Comprehensive Prescribed Fire Management Plan (CRXFMP) is being posted on the Commission website and a press release announcing plan completion of the plan is in development.
- **MOU/MOA:**
 - A MOU, or other future understanding and approval mechanism, for CPBC to implement prescribed fire on NYSDEC lands after the contract period is being developed with NYSDEC to ensure prescribed fire program continuity after the expiration of the prescribed fire grant in March 2023. Potential alternatives to MOU enactment enabling Commission work on lands within the CPB are also being discussed and explored. The Division is also seeking a similar MOU with the NYS Office of Parks, Recreation and Historic Preservation in order to advance management in Brookhaven State Park.
 - Suffolk County Department of Parks, Recreation and Conservation MOA to allow for Commission-led on-the-ground stewardship activities, especially prescribed fire site preparation and operations on County lands, remains under review by Suffolk County Parks Commissioner Jason Smagin and staff.
 - Brookhaven National Laboratory (BNL) and CPBC have completed a draft Commission/BNL MOU to advance and solidify formalized understanding of collaborative work and facility use for science and stewardship efforts, the prescribed fire program, NYWIMA and other educational programming. Final drafts of all MOU's have been presented to the Commission for review and approval.

- **Burn and Pre-Treatment Plans:**



- The South of Currans Woodlands prescribed burn plan has received final review at the NYSDEC Region 1 level and has been sent to Albany for final review and approval. This plan covers 121 acres within the Rocky Point Pine Barrens State Forest of which 60 acres have been mechanically treated. Prescribed fire is targeted in order to improve protection to nearby subdivisions and for the purposes of forest health improvement.
- Initial planning and burn plan development are under way for the David Sarnoff Pine Barrens State Forest.
- The Division continues to collaborate with NYSDEC Region 1, Forest Health and Forest Protection to coordinate activities and efforts on mechanical reductions and fire control line installation for prescribed fire preparation, forest health and public health improvements.

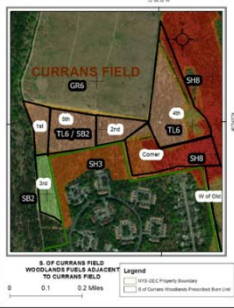
Prescribed Fire Plan

S of Currans Field Woodlands

Rocky Point Pine Barrens State Forest
Brookhaven, NY

March 2021-Dec 2030



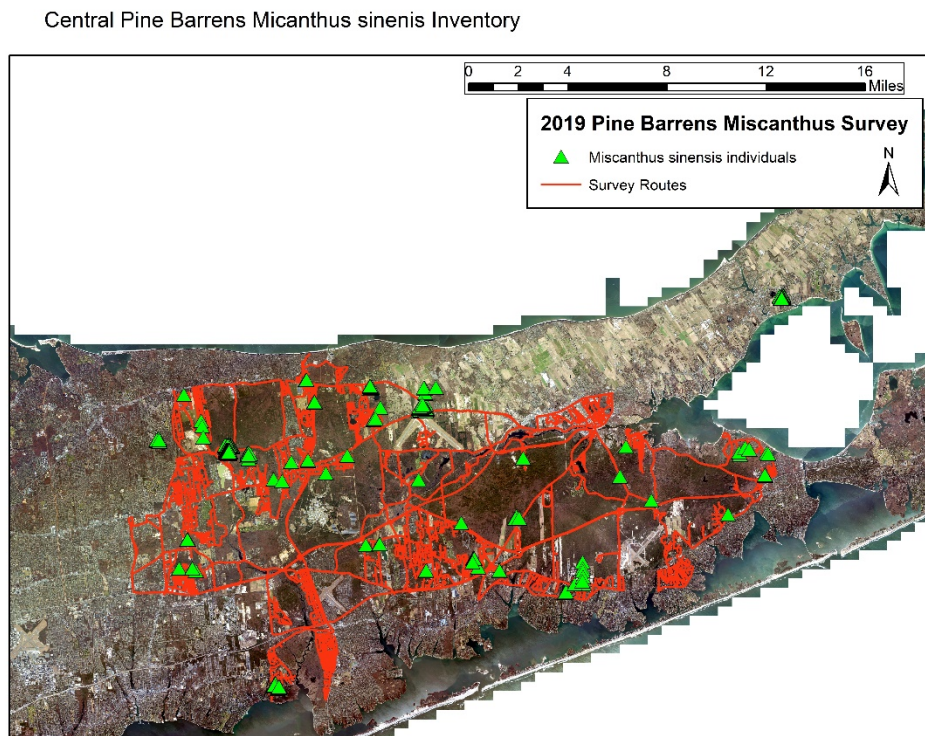
- ***Training and Preparedness:***
 - Shaun Ziegler, Polly Weigand, Bob Panko, Jade Blennau, Broderick DeAngelis, and Gary Enright participated in the annual National Wildfire Coordinating Group RT130 - Wildfire Refresher Training on March 15th in order to maintain their status for working on prescribed fires.
- ***Education and Outreach:***
 - Several additional components of a holistic education and outreach program including prescribed fire have been incorporated into the Comprehensive Prescribed Fire Management Plan based on feedback from partner agencies and stakeholders.
 - The Division is working to create new and update past CPBC website content related to prescribed fire operations. Website content will be an important resource for the public as it will be referenced via QR code within all future education and outreach deliverables such as brochures, postcards and pamphlets. An informational video is being created to introduce the public to the CPBC prescribed fire program.
- ***Equipment Storage and Purchasing:***
 - Division specified equipment and vehicle storage for the prescribed fire program are awaiting clarification of the NYS budget as well as insurance procurement in order to move forward with purchasing.
 - Several meetings with SCWA have occurred in order to develop a site plan which will provide space for container storage in combination with potential well field pumping capacity increase and parking improvement projects in the planning phases at the Westhampton Beach facility.

Forest Health:

- ***Southern Pine Beetle (SPB)***
 - **Surveying & Suppression:** Statewide SPB Incident Command System continues to be coordinated by NYSDEC's Forest Health Unit. Operations include aerial and ground surveys, suppression, restoration, research, and forest management.
 - Rapid Detection and Suppression Response continues to be coordinated by the NYSDEC and Commission to strategically address SPB reflective of COVID and available sawyers. Commission headed up SPB surveying until the field season concluded at the end of December. Plans are in place to continue field efforts in spring.
 - NYSDEC conducted its most recent aerial survey on March 4. The data collected from this flight will reveal SPB infestation spread and hotspot areas that will guide ground surveying efforts in spring.
 - **SPB Trapping Data Analysis & Report:** The Division is working to review southern pine beetle monitoring data that was collected in partnership with NYSDEC from 2015-2018.
 - This study will use data from beetle traps set in the field to identify local SPB population emergence, dormancy, and number of generations within a year. In addition, the report will investigate the relationship between SPB and local bark beetles, including their predator, the dubious checkered beetle.
 - Understanding these life cycle events and relationships will be key to informing future SPB management practices in the Central Pine Barrens.
 - **Southern Pine Beetle (SPB) Impact Study**
 - Historic aerial imagery is being analyzed to identify the initial outbreaks of SPB more accurately and to then track the outbreaks through time and space to quantify degree and extent of impact.
 - This information will help in understanding dynamics of this invasive pest and may help inform land managers on where to expect new infestations to occur in the coming years.

- **Early Detection Rapid Response Non-native Bark and Ambrosia Beetle Trapping Study**
 - Early Detection and Rapid Response monitoring program coordinated by NYSDEC and sponsored by the US Forest Service is a program that the Division is once again supporting this field season. This trapping effort helps to protect Central Pine Barrens' forest health management as it allows for rapid management response in the event that new detections of harmful non-native bark or ambrosia beetles are detected. Trapping is occurring around transfer stations and areas of high trade and transport where the highest risk of introduction of such non-native insects occurs.
 - Trap locations, start date, and equipment logistics for the upcoming field season are being organized in order to support a biweekly monitoring study this spring.

Invasive Species Management:



Source - Polly Weigand, Central Pine Barrens Commission
Un-official map - for planning purposes only.

- The Division attended the Phragmites Control Strategies, Considerations, and Case Studies webinar hosted by the Long Island Invasive Species Management Area (LIISMA). Presentations shared land management lessons learned while strategically combatting this invasive.
- Division staff monitored for *Miscanthus sinensis* in regional grasslands and removed those found through digging in order to prevent further infestation and spread.
- Division staff held meeting with NYSDOT, PSEG, LIISMA, Town of Brookhaven and Town of Southampton staff to coordinate a collaborative management response to documented infestations of *Miscanthus* and to also establish future monitoring and education and outreach activities within the Central Pine Barrens and Long Island region.

Encroachment Restoration:

- A draft Request for Proposal (RFP) is being developed to solicit, vet and secure contractors for performing restoration work at existing and future encroachment and violation sites.
- Division staff continues to provide restoration recommendations to the New York State Attorney General's office regarding a violation in Eastport.



CAED Highlights 1/1/21 – 03/08/21

- Seven incident reports to date
- Two conservation easement inspections to date
- Continue work with state, county and towns on unpermitted activity
- Enforcement meetings held with SC Parks; LEC
- Camera surveillance of dump sites continues, 2 dumping investigations i
- Wildfire classes attended on-line

Yvette Aguiar
Member

Steven Bellone
Member

Edward P. Romaine
Member

Jay H. Schneiderman
Member



624 Old Riverhead Road
Westhampton Beach, NY
11978

Phone (631) 288-1079
Fax (631) 288-1367
www.pb.state.ny.us

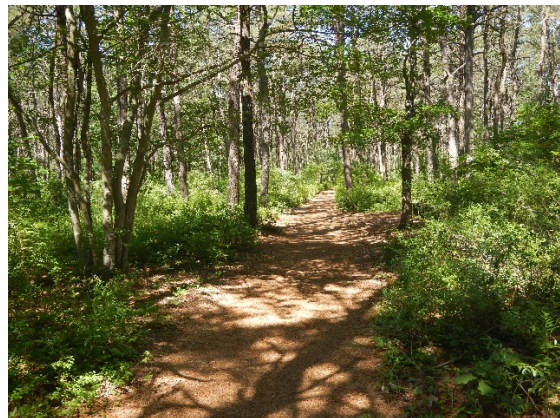
Central Pine Barrens Joint Planning and Policy Commission
 Land Use Division Bi-Monthly Update for the Meeting of March 17, 2021

Action Municipality	Central Pine Barrens Location		
	Town of Brookhaven	Town of Riverhead	Town of Southampton
Applications and Requests for Determination of Jurisdiction	Kogel Brothers Core Hardship, Middle Island, single-family residence on 5.3 acres, 200-499-3-4 (Core). Decision deadline 6/30/21.	Kent Animal Shelter Determination redevelop existing structures, 1.9 acres, 600-138-1-6.2, 7.1 (Core).	<ul style="list-style-type: none"> DellaSperanzo Core Hardship two-lot subdivision on 1.8 acres, 900-164-4-40. Decision deadline 3/17/21. Request to withdraw application. Quogue Wildlife Refuge Request for Determination of Jurisdiction, nature center expansion and storage building, 902-1-1-23.1 (Core, Village of Quogue).
SEQRA Coordination, Referrals, Inquiries and Review of Other Information on Projects in the Central Pine Barrens	<ul style="list-style-type: none"> 7 Eleven Middle Island revegetation plan. Garden Department, Coram Bus depot, Medford inquiry Dream Come True farm, Eastport, redevelopment inquiry Meadows at Yaphank PDD commercial to residential use phased development 	<ul style="list-style-type: none"> Peconic River Sportsman’s Club revegetation plan (Core). Peconic Herb Farm revegetation plan (Core). 	<ul style="list-style-type: none"> Referral: 215 Rogers Way at Gabreski Airport PDD, 88,060 sf building, 199 parking spaces. Army Corps Dwarf Pine Plains munitions removal project rights of entry review 3 ZBA referrals for single-family residences, Flanders Nighttime lighting at Town park inquiry (Core)
Participation in Other Regional Projects	<ul style="list-style-type: none"> Peconic Estuary Partnership USGS-Commission Water Resources Monitoring Program – annual update by USGS this meeting 		
Other Activity and Participation	<ul style="list-style-type: none"> Hardship applications, SEQRA Coordination, referrals, inquiries, and other applications and information requests: review, analyze, and respond to submissions, referrals of site plans, subdivisions, and mixed-use projects, Developments of Regional Significance, and other materials. Development project site inspections in pre- and post-development phases. Requests for Determination of Jurisdiction: Research and prepare materials for the Commission. Draft Supplemental GEIS for the Central Pine Barrens Comprehensive Land Use Plan Amendments. FOIL Requests: Research and assist with FOIL requests and litigation on development projects. Support Compliance and Enforcement Division on clearing and encroachments, land use and development matters and conservation easements Support other Commission divisions as needed including matters other land use project incidents. 		

Kent Animal Shelter (Core)



Quogue Wildlife Refuge (Core)



Pine Barrens Credit Program Report for March 17, 2021:

Activities in the Credit Program since January 1, 2021 included review of applications for Letters of Interpretation, Conservation Easements, Credit Program and FOIL requests management. Some specific work items include:

- 19 Letters of Interpretations were issued, 3 in the Town of Brookhaven, 1 in the Town of Riverhead and 15 in the Town of Southampton.
- 10 Conservation Easements are currently in process: Long Island Country Club, Liguori (two parcels), Broidy, Porter-Bell, Samuels Catering Corp (four parcels), Graf.
- As of March 9, 2021, 75 Conservation Easement Signs were installed (49 in the Town of Brookhaven, 6 in the Town of Riverhead and 20 in the Town of Southampton).
- Harriet Murphy Credit Appeal Decision is due at the March 17, 2021 Commission meeting.
- Armand Gustave LLC v CPB Commission litigation currently in process.

Easement Protected Lands and Pine Barrens Credits As of March 9, 2021								
	Brookhaven	2021	Riverhead	2021	Southampton	2021	Total	2021
Parcels	509	-	36	-	448	-	993	-
Acreage	781.96	-	516.60	-	846.71	-	2145.27	-
Average parcel size	1.54	-	14.35	-	1.89	-	2.16	-
Credits generated	532.91	-	172.39	-	330.94	-	1036.24	-
Credits redeemed	343.97	-	131.16	-	156	-	631.13	-
Credits not redeemed	188.94	-	41.23	-	174.94	-	405.11	-
Credits sold	559.28	1.25	219.3	1	254.18	1.07	1032.76	3.32
Total value of PBC transactions through this date	\$29,547,569	\$117,750	\$8,022,247	\$60,500	\$17,025,702	\$111,120	\$54,595,518	\$289,370
Average Credits value		\$94,200		\$60,500		\$103,850		\$87,160
Credits owned by the Clearinghouse	10.19		-		-		10.19	
# of Inspected CE Parcels	-	-	-	-	-	-	-	-
# of Installed CE Signs	69	-	7	-	76	-	152	-



SUFFOLK COUNTY COMPTROLLER

330 CENTER DRIVE RIVERHEAD, N.Y. 11901-3311

Telephone: (631) 852-1501 FAX (631) 852-1507

JOHN M. KENNEDY, JR.
COUNTY COMPTROLLER

March 1st, 2021

**Central Pine Barrens Joint Planning and
Policy Commission
P.O. Box 587
Great River, N.Y. 11739-0587**

**Dear Pine Barrens Credit Clearinghouse
Board of Advisors:**

**Attached please find our financial report on the Pine Barrens Credit Program for the
month of February 2021. Thank you.**

Respectfully submitted,

Christina M. Withers

**Christina M. Withers, CIA, CPFO
Executive Director of Finance & Taxation**

Suffolk County Comptroller's Office The Pine Barrens Credit Program	
Balance as of December 31st, 2020	\$2,549,449.05
Additional Deposits	0.00
Interest (see below for details)	398.17
Disbursements	0.00
Balance as of February 28th, 2021	\$2,549,847.22

**Interest Earnings & Disbursements
For the Months of January - December 2021**

Interest Earnings

Premier MMA - Public Fund

January	202.57
February	195.60
March	0.00
April	0.00
May	0.00
June	0.00
July	0.00
August	0.00
September	0.00
October	0.00
November	0.00
December	0.00
	<u>\$398.17</u>

<u>Interest Period</u>	<u>APR</u>
01/01/21- 01/31/21	0.1000%
02/01/21- 02/28/21	0.1000%
03/01/21- 03/31/21	0.0000%
04/01/21- 04/30/21	0.0000%
05/01/21- 05/31/21	0.0000%
06/01/21- 06/30/21	0.0000%
07/01/21- 07/31/21	0.0000%
08/01/21- 08/31/21	0.0000%
09/01/21- 09/30/21	0.0000%
10/01/21- 10/31/21	0.0000%
11/01/21- 11/30/21	0.0000%
12/01/21- 12/31/21	0.0000%

Disbursements

None	<u>\$ -</u>
	<u>\$ -</u>