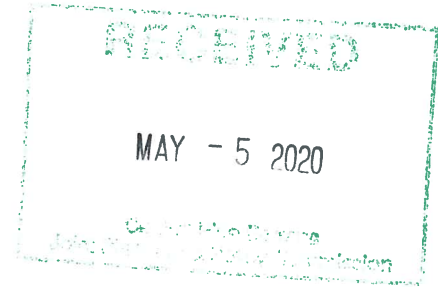




DEPARTMENT OF THE ARMY  
US ARMY CORPS OF ENGINEERS  
NEW ENGLAND DISTRICT  
696 VIRGINIA ROAD  
CONCORD MA 01742-2751

May 5, 2020

Julie Hargrave  
Principal Environmental Planner  
Central Pine Barrens Commission  
624 Old Riverhead Road  
Westhampton Beach, NY 11978



RE: Request for Determination of Jurisdiction

Dear Ms. Hargrave:

We (US Army Corps of Engineers (USACE)) have received approval to start a Remedial Investigation project at the former Suffolk County Army Airfield Bombing & Gunnery Range. We understand that the majority of the project area is located within the Central Pine Barrens Conservation area. Therefore, we are seeking a determination of jurisdiction, as required by the Central Pine Barrens Commission.

This project is part of the Formerly Used Defense Site (FUDS) Program, which includes properties that were under the jurisdiction of the Department of Defense (DoD) and transferred from DoD control prior to October 17, 1986. DoD is responsible for environmental restoration of DoD generated contamination at FUDS sites, and USACE executes the FUDS program on behalf of DoD. The USACE conducts FUDS environmental restoration activities in accordance with the Defense Environmental Restoration Program (DERP) statute (10 USC 2701 et seq.) and the Comprehensive Environmental Response, Compensation, and Liability Act (CERCLA).

The Remedial Investigation project will include field investigations of the project area to determine the nature and extent of any munitions or environmental contaminants that may be present on the site as a result of past Department of Defense activities. The project site was activated in 1943 for use by the Army for bombing, strafing, and rocket fire training exercises. Military use of the Suffolk Co AAF Bombing & Gunnery Range site ceased in 1946. The Army did perform some clearance of munitions at that time, but not to the standards that we use today.

The attached map shows the project area that we plan on investigating. The area of investigation is the Range Complex, and it includes approximately 4,297 acres of land. It is the area within the red border, identified as "MRS\_Boundary\_04\_30\_2020" (See attached). We are in the preliminary stages of determining the scope of the investigation and securing a contractor, but the general investigation activities we will be doing will be geophysical surveys to find potential munitions at the site, digging of anomalies of interest

(potential munitions), and soil sampling to determine if there was any release of contaminants to the soil.

For the geophysical surveys, we would need to clear brush and vegetation in order to do our geophysical investigation. Our initial estimates are that we would want to do geophysical surveys on approximately 60 acres out of the 4,297 acres of investigation. This would include 5 foot wide transects that are spaced about 1,000 feet apart, as well as some 100 ft by 100 ft grids and some 50 ft by 50 ft grids. The transects and grids would be spread out across the entire project site, so we wouldn't be clearing any large area at once. For the soil sampling, we may also require a small amount of brush clearing to access sampling areas.

Prior to initiating any field work, USACE will develop detailed workplans that will identify all project goals and activities. The work plans will include an Environmental Protection Plan that details the operational procedures and methods that will be implemented to ensure protection of natural and cultural resources during project execution.

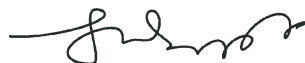
We will use the data that we collect during the Remedial Investigation to determine if there are any unacceptable risks present at the site as a result of the past Department of Defense activities. If there are unacceptable risks, then we will:

- Evaluate remediation alternatives to address the risk in a Feasibility Study
- Propose a final remedy in a Proposed Plan, and seek public comment on the Proposed Plan
- Select a final remedial action in a Decision Document (after considering public comments)
- Implement the final remedial action in the Decision Document

The Central Pine Barrens Commission has been identified as a key stakeholder for this project and will have the opportunity for continued involvement including review of work plans and regulatory project deliverables. We look forward to working with you on this important project.

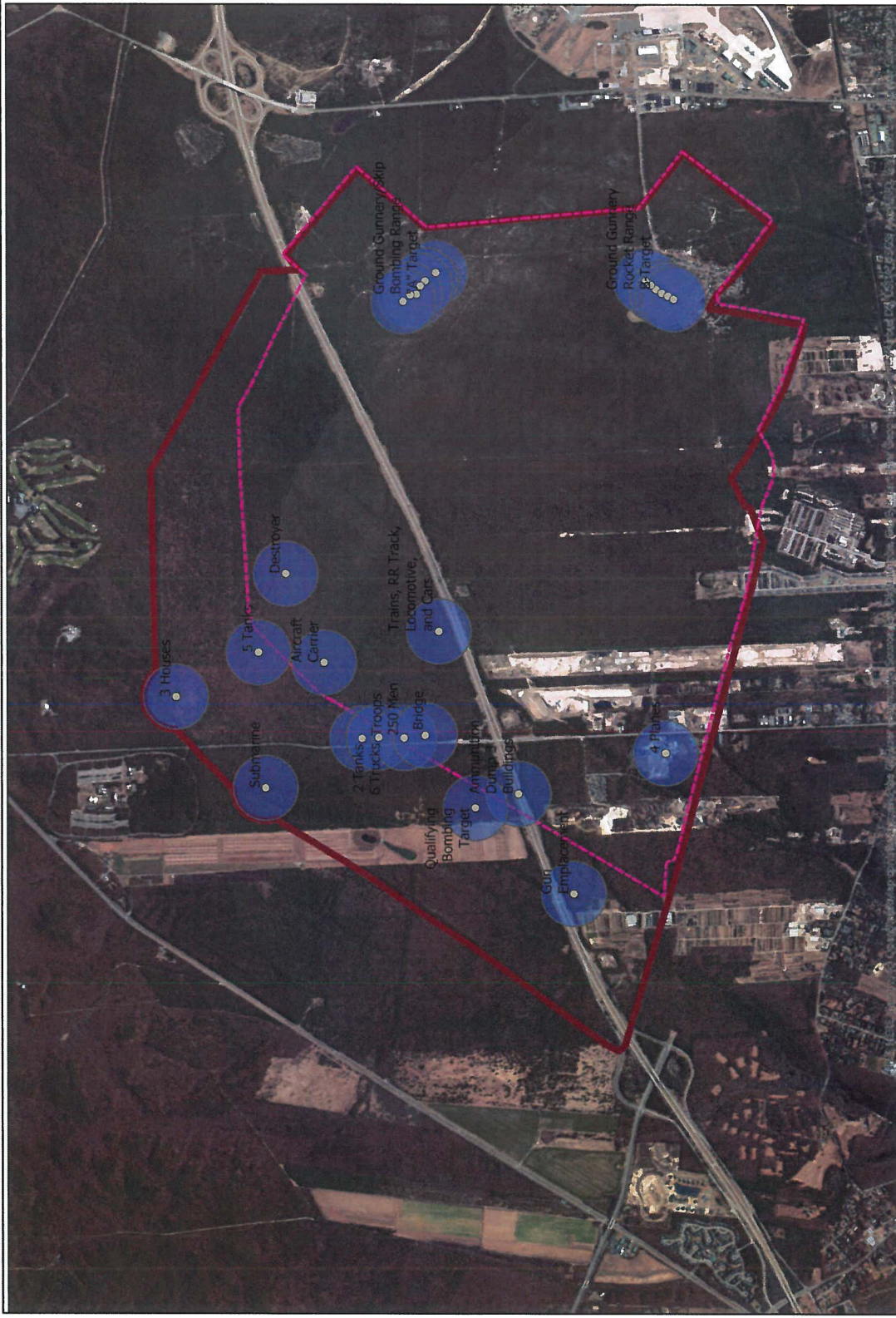
If you have any questions, please contact me at (978) 318-8962 or [julia.m.rupp@usace.army.mil](mailto:julia.m.rupp@usace.army.mil) or Mr. Todd Beckwith at (410) 370-5327 or [todd.t.beckwith@usace.army.mil](mailto:todd.t.beckwith@usace.army.mil).

Sincerely,



Julie Rupp  
Project Manager





- Targets
- MRS\_Boundary\_04\_30\_2020
- Old\_MRS\_Boundary

RECEIVED

MAY - 5 2020

Central Base Force  
Joint Planning & Policy Commission



 US Army Corps of Engineers BUILDING STRONG®	Project Site City, State
Figure Subject Project Name	Figure ID