



August 20, 2025

Kelly Risotto
Principal
Land Use Ecological Services Inc.
570 Expressway Drive South, Suite 2F
Medford, NY 11763

RE: PSEGLI Transmission Pole Replacements – 87 Poles
Central Pine Barrens Compatible Growth Area

Dear Ms. Risotto:

On July 31, 2025, the Central Pine Barrens Commission received materials on the referenced proposal. The submission included a letter, maps and photographs of pole replacement locations in the hamlets of Coram, Manorville and Yaphank.

The Proposed Action involves the replacement of a total of 87 timber utility poles in the Compatible Growth Area as part of the Power On Storm Hardening Program.

Existing and new poles are timber and will range in height from 30 to 50 feet. The height of the poles will change no more than 10 feet above present height and will not increase more than 2 to 3 inches in diameter.

The poles are located in roadside right-of-ways. The material states no trees or shrubs will be removed, though trimming is required around some poles for safety. Up to nine poles will be relocated away from trees and within five feet of the existing location. Areas of disturbance will be reseeded per New York State Department of Transportation (NYSDOT) and/or Suffolk County specifications, including native grass mix where appropriate.

As proposed, the activity appears to constitute “non-development” pursuant to New York State Environmental Conservation Law Article 57 Section 57-0107.13(ii) which states, “Work by any utility not involving substantial engineering redesign for the purpose of inspection, maintenance or renewal on established utility rights of way or the likes,”... No further review from this office is required.

If the proposed activity changes, including the need to remove trees, please notify this office and forward the updated information for Commission review prior to implementation as the revised project may constitute development.

It is encouraged that, where possible, the new pole heights remain within the heights of surrounding trees to maintain the overall character of the Central Pine Barrens.

Thank you for your attention, and if you have any questions, please do not hesitate to contact me at (631) 563-0307.

Sincerely,


Tara Murphy
Environmental Planner

cc: Judith Jakobsen, Executive Director
Julie Hargrave, Pine Barrens Manager
John C. Milazzo, Counsel

Timothy C. Hubbard
Member

Maria Z. Moore
Member

Daniel J. Panico
Member

Edward P. Romaine
Member

624 Old Riverhead Road
Westhampton Beach, NY
11978

Phone (631) 288-1079
Fax (631) 288-1367
www.pb.state.ny.us



RECEIVED

JUL 31 2025

Central Pine Barrens
Joint Planning & Policy Commission

July 31, 2025

Ms. Julie Hargrave
Principal Environmental Planner
Central Pine Barrens Joint Planning & Policy Commission
624 Old Riverhead Road
Westhampton Beach, NY 11978

RE: Request for No-Development Confirmation
PSEG Long Island | Power-On Pole Replacements Project

Dear Ms. Hargrave:

Land Use Ecological Services, Inc., on behalf of PSEG Long Island, as agent for Long Island Lighting Company d/b/a LIPA, a wholly owned subsidiary of Long Island Power Authority, is requesting confirmation that work proposed within the Compatible Growth Area (CGA) of the Central Pine Barrens does not constitute "development" as per NYS ECL Article §57-0107(13). PSEG is proposing the in place replacement of existing utility poles in three (3) project areas, as follows:

- Circuit 8RR-931 (46512) – 33 poles to be replaced along West Dennis Lane and Oak Lane, Coram. All 33 poles are in the CGA. [Map C-WD1]
- Circuit 8SM-4N2 (16391) - 39 poles to be replaced along North Bernstein Blvd and Chapman Blvd, Manorville. All 73 poles are in the CGA. [Map Ma25-1]
- Circuit 8EX-246 (597303) – 15 poles to be replaced along Country Road, Yaphank. All poles are within the CGA. [Map YP25-2]

Most of the poles to be replaced are located within mowed/maintained strips along each of the road right-of-ways; 10 of the poles to be replaced are in close proximity to native vegetation. Representative photos of poles to be replaced are enclosed. PSEG has confirmed that replacement of poles will not result in removal of any trees or shrubs. Trimming is required around some poles for safety; and relocation of up to 9 poles away from trees, but within 5 feet of existing, will be performed.

Existing and new poles are timber; new poles will be southern yellow pine. Existing poles are 30-50 feet in height; new poles are 40-50 feet in height. For all poles, height will not increase by more than 10 feet with replacement. For example, 30 foot poles will be replaced with 40 foot poles; 35 foot poles will be replaced with 40-45 foot poles; and poles 40-50 feet in height will be replaced with 50 foot poles. New poles will be the same/similar class/diameter, with a maximum increase of 2-3 inches in diameter versus existing.

All equipment will remain on the paved roadways during pole replacement, with some setup and outriggers to be placed on the mowed/maintained strips along each of the circuits. There will be no disturbance to naturally vegetated areas, and no removal of any trees or woody vegetation. Areas of disturbance will be reseeded per NYSDOT and/or Suffolk County specifications, utilizing native grass mix where appropriate.

Please note that these pole replacements are part of the Power On Storm Hardening Program and is maintenance of existing overhead electric lines. Undergrounding these circuits, or portions thereof, is not feasible due to cost and logistics, as well as the potential to disturb more area than the proposed pole replacements depending on the method of undergrounding. The Power On program has funding specified for pole replacements, with no funding available for undergrounding. PSEG poles are utilized by other utilities, which themselves do not have the resources or requirement to underground, so logistically undergrounding is not feasible.

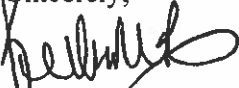
In accordance with ECL § 57-0107 (13), the project as described is classified as one or more of the following, and therefore, does not constitute development:

- (i) *Public improvements undertaken for the health, safety, or welfare of the public. Such public improvements shall be consistent with the goals and objectives of this article, and shall include, but not be limited to, maintenance of an existing road or railroad track.*
- (ii) *Work by any utility not involving substantial engineering redesign for the purpose of inspection, maintenance or renewal on established utility rights-of-way or the likes, and any work pertaining to water supply for the residents of Suffolk County.*
- (vi) *Work by a utility performed for the purpose of public health, safety, or welfare and consistent with the goals and objectives of this article.*

Based on the information provided, I respectfully request that the Commission confirm in writing that the project is classified as "non-development" as soon as possible. In support of this request for a non-development confirmation, I have enclosed circuit maps showing the poles to be replaced, as well as representative photographs of the poles.

If you have any questions or require additional information to enable review and confirmation of no development, please contact me at (631) 727-2400 or krisotto@landuse.us. Thank you.

Sincerely,



Kelly M. Risotto
Principal

Enc.
Via Priority Mail and Email

RECEIVED

JUL 31 2025

Central Pine Barrens



Pole to be Replaced Suffolk 103fwa0 FWW NWI - NY		All Poles are within the Central Pine Barrens Compatible Growth Area (CGA).		CORAM		N 0 100 200 400 ft		Prepared By: PSEG Long Island H2M architects + engineers Land Use Ecological Services, Inc.		Project: POLE REPLACEMENT For: PSEG Long Island At: Coram Circuit: 8RR931		Date: 7/29/2025 Revised:		Sheet: C-WD1	
--	--	---	--	-------	--	--------------------	--	---	--	--	--	--------------------------	--	--------------	--

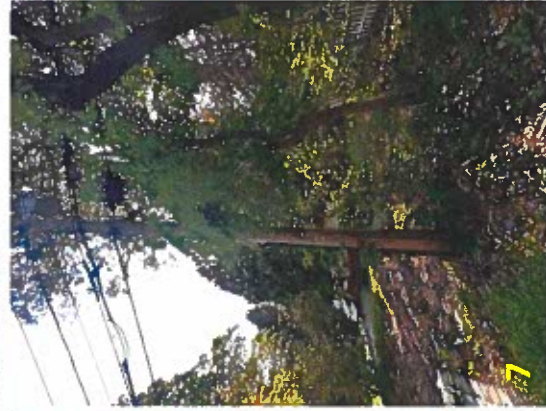
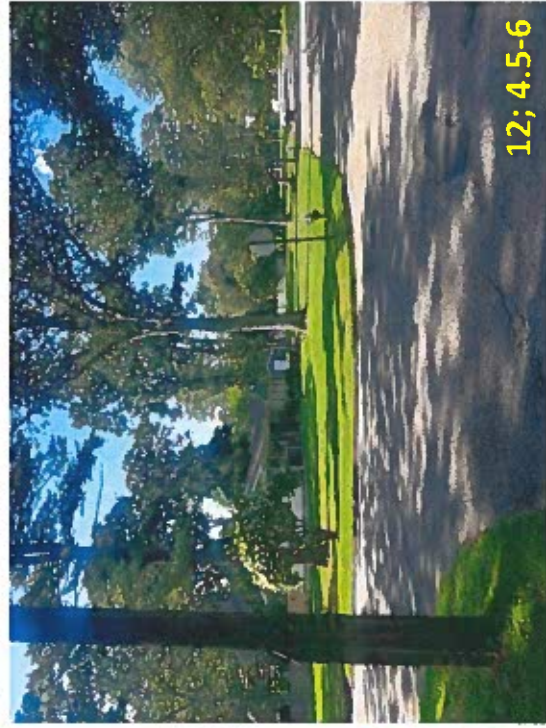
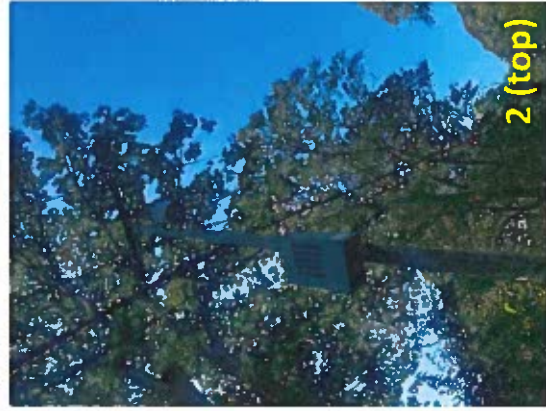
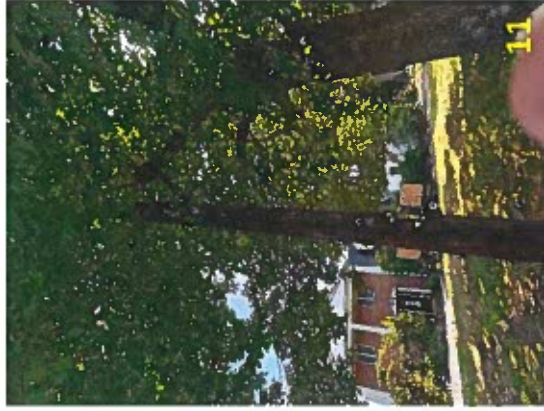
PSEG Long Island - Circuit 8RR-931 (Coram) - Photos of PSEG Poles to be Replaced

Photos taken 7/29/2025 by Land Use Ecological Services, Inc.



PSEG Long Island - Circuit 8RR-931 (Coram) – Representative Photos of PSEG Poles to be Replaced

Photos taken 7/29/2025 by Land Use Ecological Services, Inc.



RECEIVED

JUL 31 2025



<div><div><div><div><div></div><div></div><div></div><div></div></div><div><div></div><div></div><div></div><div></div></div></div><div><div></div><div></div><div></div><div></div></div><div><div></div><div></div><div></div><div></div></div></div><div><div></div><div></div><div></div><div></div></div><div><div></div><div></div><div></div><div></div></div></div> <div><div></div><div></div><div></div><div></div></div> <div><div></div><div></div><div></div><div></div></div> <div><div></div><div></div><div></div><div></div></div> <div><div></div><div></div><div></div><div></div></div> <div><div></div><div></div><div></div><div></div></div> <div><div></div><div></div><div></div><div></div></div> <div><div></div><div></div><div></div><div></div></div> <div><div></div><div></div><div></div><div></div></div> <div><div></div><div></div><div></div><div></div></div> <div><div></div><div></div><div></div><div></div></div> <div><div></div><div></div><div></div><div></div></div> <div><div></div><div></div><div></div><div></div></div> <div><div></div><div></div><div></div><div></div></div> <div><div></div><div></div><div></div><div></div></div> <div><div></div><div></div><div></div><div></div></div> <div><div></div><div></div><div></div><div></div></div> <div><div></div><div></div><div></div><div></div></div> <div><div></div><div></div><div></div><div></div></div> <div><div></div><div></div><div></div><div></div></div> <div><div></div><div></div><div></div><div></div></div> <div><div></div><div></div><div></div><div></div></div> <div><div></div><div></div><div></div><div></div></div> <div><div></div><div></div><div></div><div></div></div> <div><div></div><div></div><div></div><div></div></div> <div><div></div><div></div><div></div><div></div></div> <div><div></div><div></div><div></div><div></div></div> <div><div></div><div></div><div></div><div></div></div> <div><div></div><div></div><div></div><div></div></div> <div><div></div><div></div><div></div><div></div></div> <div><div></div><div></div><div></div><div></div></div> <div><div></div><div></div><div></div><div></div></div> <div><div></div><div></div><div></div><div></div></div> <div><div></div><div></div><div></div><div></div></div> <div><div></div><div></div><div></div><div></div></div> <div><div></div><div></div><div></div><div></div></div> <div><div></div><div></div><div></div><div></div></div> <div><div></div><div></div><div></div><div></div></div> <div><div></div><div></div><div></div><div></div></div> <div><div></div><div></div><div></div><div></div></div> <div><div></div><div></div><div></div><div></div></div> <div><div></div><div></div><div></div><div></div></div> <div><div></div><div></div><div></div><div></div></div> <div><div></div><div></div><div></div><div></div></div> <div><div></div><div></div><div></div><div></div></div> <div><div></div><div></div><div></div><div></div></div> <div><div></div><div></div><div></div><div></div></div> <div><div></div><div></div><div></div><div></div></div> <div><div></div><div></div><div></div><div></div></div> <div><div></div><div></div><div></div><div></div></div> <div><div></div><div></div><div></div><div></div></div> <div><div></div><div></div><div></div><div></div></div> <div><div></div><div></div><div></div><div></div></div> <div><div></div><div></div><div></div><div></div></div> <div><div></div><div></div><div></div><div></div></div> <div><div></div><div></div><div></div><div></div></div> <div><div></div><div></div><div></div><div></div></div> <div><div></div><div></div><div></div><div></div></div> <div><div></div><div></div><div></div><div></div></div> <div><div></div><div></div><div></div><div></div></div> <div><div></div><div></div><div></div><div></div></div> <div><div></div><div></div><div></div><div></div></div> <div><div></div><div></div><div></div><div></div></div> <div><div></div><div></div><div></div><div></div></div> <div><div></div><div></div><div></div><div></div></div> <div><div></div><div></div><div></div><div></div></div> <div><div></div><div></div><div></div><div></div></div> <div><div></div><div></div><div></div><div></div></div> <div><div></div><div></div><div></div><div></div></div> <div><div></div><div></div><div></div><div></div></div> <div><div></div><div></div><div></div><div></div></div> <div><div></div><div></div><div></div><div></div></div> <div><div></div><div></div><div></div><div></div></div> <div><div></div><div></div><div></div><div></div></div> <div><div></div><div></div><div></div><div></div></div> <div><div></div><div></div><div></div><div></div></div> <div><div></div><div></div><div></div><div></div></div> <div><div></div><div></div><div></div><div></div></div> <div><div></div><div></div><div></div><div></div></div> <div><div></div><div></div><div></div><div></div></div> <div><div></div><div></div><div></div><div></div></div> <div><div></div><div></div><div></div><div></div></div> <div><div></div><div></div><div></div><div></div></div> <div><div></div><div></div><div></div><div></div></div> <div><div></div><div></div><div></div><div></div></div> <div><div></div><div></div><div></div><div></div></div> <div><div></div><div></div><div></div><div></div></div> <div><div></div><div></div><div></div><div></div></div> <div><div></div><div></div><div></div><div></div></div> <div><div></div><div></div><div></div><div></div></div> <div><div></div><div></div><div></div><div></div></div> <div><div></div><div></div><div></div><div></div></div> <div><div></div><div></div><div></div><div></div></div> <div><div></div><div></div><div></div><div></div></div> <div><div></div><div></div><div></div><div></div></div> <div><div></div><div></div><div></div><div></div></div> <div><div></div><div></div><div></div><div></div></div> <div><div></div><div></div><div></div><div></div></div> <div><div></div><div></div><div></div><div></div></div> <div><div></div><div></div><div></div><div></div></div> <div><div></div><div></div><div></div><div></div></div> <div><div></div><div></div><div></div><div></div></div> <div><div></div><div></div><div></div><div></div></div> <div><div></div><div></div><div></div><div></div></div> <div><div></div><div></div><div></div><div></div></div> <div><div></div><div></div><div></div><div></div></div> <div><div></div><div></div><div></div><div></div></div> <div><div></div><div></div><div></div><div></div></div> <div><div></div><div></div><div></div><div></div></div> <div><div></div><div></div><div></div><div></div></div> <div><div></div><div></div><div></div><div></div></div> <div><div></div><div></div><div></div><div></div></div> <div><div></div><div></div><div></div><div></div></div> <div><div></div><div></div><div></div><div></div></div> <div><div></div><div></div><div></div><div></div></div> <div><div></div><div></div><div></div><div></div></div> <div><div></div><div></div><div></div><div></div></div> <div><div></div><div></div><div></div><div></div></div> <div><div></div><div></div><div></div><div></div></div> <div><div></div><div></div><div></div><div></div></div> <div><div></div><div></div><div></div><div></div></div> <div><div></div><div></div><div></div><div></div></div> <div><div></div><div></div><div></div><div></div></div> <div><div></div><div></div><div></div><div></div></div> <div><div></div><div></div><div></div><div></div></div> <div><div></div><div></div><div></div><div></div></div> <div><div></div><div></div><div></div><div></div></div> <div><div></div><div></div><div></div><div></div></div> <div><div></div><div></div><div></div><div></div></div> <div><div></div><div></div><div></div><div></div></div> <div><div></div><div></div><div></div><div></div></div> <div><div></div><div></div><div></div><div></div></div> <div><div></div><div></div><div></div><div></div></div> <div><div></div><div></div><div></div><div></div></div> <div><div></div><div></div><div></div><div></div></div> <div><div></div><div></div><div></div><div></div></div> <div><div></div><div></div><div></div><div></div></div> <div><div></div><div></div><div></div><div></div></div> <div><div></div><div></div><div></div><div></div></div> <div><div></div><div></div><div></div><div></div></div> <div><div></div><div></div><div></div><div></div></div> <div><div></div><div></div><div></div><div></div></div> <div><div></div><div></div><div></div><div></div></div> <div><div></div><div></div><div></div><div></div></div> <div><div></div><div></div><div></div><div></div></div> <div><div></div><div></div><div></div><div></div></div> <div><div></div><div></div><div></div><div></div></div> <div><div></div><div></div><div></div><div></div></div> <div><div></div><div></div><div></div><div></div></div> <div><div></div><div></div><div></div><div></div></div> <div><div></div><div></div><div></div><div></div></div> <div><div></div><div></div><div></div><div></div></div> <div><div></div><div></div><div></div><div></div></div> <div><div></div><div></div><div></div><div></div></div> <div><div></div><div></div><div></div><div></div></div> <div><div></div><div></div><div></div><div></div></div> <div><div></div><div></div><div></div><div></div></div> <div><div></div><div></div><div></div><div></div></div> <div><div></div><div></div><div></div><div></div></div> <div><div></div><div></div><div></div><div></div></div> <div><div></div><div></div><div></div><div></div></div> <div><div></div><div></div><div></div><div></div></div> <div><div></div><div></div><div></div><div></div></div> <div><div></div><div></div><div></div><div></div></div> <div><div></div><div></div><div></div><div></div></div> <div><div></div><div></div><div></div><div></div></div> <div><div></div><div></div><div></div><div></div></div> <div><div></div><div></div><div></div><div></div></div> <div><div></div><div></div><div></div><div></div></div> <div><div></div><div></div><div></div><div></div></div> <div><div></div><div></div><div></div><div></div></div> <div><div></div><div></div><div></div><div></div></div> <div><div></div><div></div><div></div><div></div></div> <div><div></div><div></div><div></div><div></div></div> <div><div></div><div></div><div></div><div></div></div> <div><div></div><div></div><div></div><div></div></div> <div><div></div><div></div><div></div><div></div></div> <div><div></div><div></div><div></div><div></div></div> <div><div></div><div></div><div></div><div></div></div> <div><div></div><div></div><div></div><div></div></div> <div><div></div><div></div><div></div><div></div></div> <div><div></div><div></div><div></div><div></div></div> <div><div></div><div></div><div></div><div></div></div> <div><div></div><div></div><div></div><div></div></div> <div><div></div><div></div><div></div><div></div></div> <div><div></div><div></div><div></div><div></div></div> <div><div></div><div></div><div></div><div></div></div> <div><div></div><div></div><div></div><div></div></div> <div><div></div><div></div><div></div><div></div></div> <div><div></div><div></div><div></div><div></div></div> <div><div></div><div></div><div></div><div></div></div> <div><div></div><div></div><div></div><div></div></div> <div><div></div><div></div><div></div><div></div></div> <div><div></div><div></div><div></div><div></div></div> <div><div></div><div></div><div></div><div></div></div> <div><div></div><div></div><div></div><div></div></div> <div><div></div><div></div><div></div><div></div></div> <div><div></div><div></div><div></div><div></div></div> <div><div></div><div></div><div></div><div></div></div> <div><div></div><div></div><div></div><div></div></div> <div><div></div><div></div><div></div><div></div></div> <div><div></div><div></div><div></div><div></div></div> <div><div></div><div></div><div></div><div></div></div> <div><div></div><div></div><div></div><div></div></div> <div><div></div><div></div><div></div><div></div></div> <div><div></div><div></div><div></div><div></div></div> <div><div></div><div></div><div></</div></div>	
---	--

PSEG Long Island - Circuit 8SM-4N2 (Manorville) – Representative Photos of PSEG Poles to be Replaced

Photos taken 7/29/2025 by Land Use Ecological Services, Inc.



PSEG Long Island - Circuit 8SM-4N2 (Manorville) – Representative Photos of PSEG Poles to be Replaced

Photos taken 7/29/2025 by Land Use Ecological Services, Inc



PSEG Long Island - Circuit 8SM-4N2 (Manorville) – Representative Photos of PSEG Poles to be Replaced

Photos taken 7/29/2025 by Land Use Ecological Services, Inc.



PSEG Long Island - Circuit 8SM-4N2 (Manorville) – Representative Photos of PSEG Poles to be Replaced

Photos taken 7/29/2025 by Land Use Ecological Services, Inc.



RECEIVED

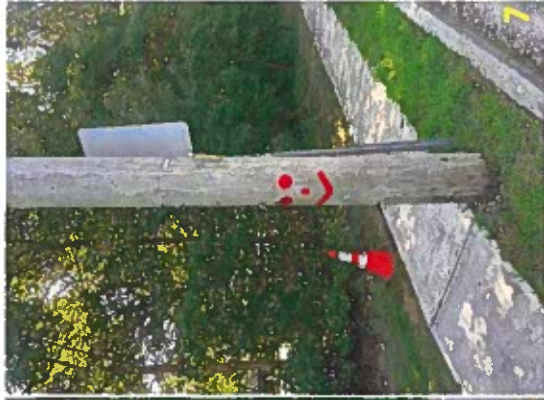
JUL 31 2025



<p> Pole to be Replaced</p> <p> NYSDEC Wetlands</p> <p> NWI - NY</p>		<p>All Poles are within the Central Pine Barrens Compatible Growth Area (CGA).</p>		<p>YAPHANK</p>		<p>1 in = 150 ft</p> <p>0 50 100 200 ft</p>		<p>Prepared By: PSEG Long Island H2M architects + engineers Land Use Ecological Services, Inc.</p>		<p>Project: POLE REPLACEMENT For: PSEG Long Island At: Yaphank Circuit: 8EX-246 (597303)</p>		<p>Date: 7/29/2025 Revised</p>		<p>Sheet: YP25-2</p>	
--	--	--	--	-----------------------	--	---	--	--	--	--	--	--------------------------------	--	----------------------	--

PSEG Long Island - Circuit 8EX-246 (597303) [Yaphank] - Photos of PSEG Poles to be Replaced

Photos taken 7/29/2025 by Land Use Ecological Services, Inc



PSEG Long Island - Circuit 8EX-246 (597303) [Yaphank] - Photos of PSEG Poles to be Replaced

Photos taken 7/29/2025 by Land Use Ecological Services, Inc

