

Educational Outreach and Communications Division Update

October 2025

Submitted by Tim Motz, Educational Outreach and Communications Coordinator

Barrens to Bay Summer Camp

- We have submitted a budget for the 2026 summer camp. One feature of the budget will be a more equal distribution of pay for counselors. We accomplished this by eliminating the lead counselor position—a step made easier by the Commission’s hire of Emmanuel Jaquez—and splitting those funds among a greater number of counselors. This allows us, without adding expenses to the budget, the ability to pay more counselors who work hard to make sure Barrens to Campers have a great experience.

“A Day in the Life” Program

- The 15th annual “A Day in the Life” program, coordinated in conjunction with Brookhaven National Laboratory and the New York State DEC, is now in full swing, with events already having taken place at the Carmans River, Gardiner County Park, Massapequa Preserve and Fire Island. This week, we are holding seven events along the Nissequogue River.
- As with last year, this year we’re hosting events on 13 different rivers, estuaries, bays and streams over seven consecutive Fridays this fall.
- New to the program this year is the Plainview/Old Bethpage district. The district’s Kennedy High School conducted student science this past week at Massapequa Preserve.
- Just to note a couple other developments—we just this week completed work on a series of instructional videos designed to teach ADITL teachers every aspect of the program’s workbook. This will serve to supplement in-person trainings, and also has the distinct advantage of providing teachers with a resource they can review again and again until they know how to lead every task in the workbook, from analyzing a site’s chemistry to measuring its physical characteristics to conducting a biological survey of its water species.
- Another major development concerns the permit process for the use of the various sites the program utilizes. Since these sites are all over Long Island and are maintained by various municipal entities with different permit application

processes, a seamless permit process has been a great challenge for the more than 100 teachers in the program. We have addressed this by working out arrangements with New York State Parks, Fire Island National Seashore and Suffolk County Parks by which they have agreed to waive a formal permit process and fees for participating teachers in exchange for us providing them with each district's site logistics in advance.

- We are also designing a new and thorough brochure explaining the program that we will use to encourage new schools to join. This brochure will be used as promotional tools in conjunction with the general introduction video we created to seek to bring new schools into the program for 2026.**



CENTRAL PINE BARRENS COMMISSION

Science And Stewardship Program

Bimonthly Report

10/15/2025

Protected Lands Council

At the end of August Science and Stewardship met with the Commission's administration to discuss program updates, review the conservation plan, and to begin preparations for hosting a Protected Lands Council meeting in the fall.

The Protected Lands Council meeting will be held on October 22, 2025, from 1:00 PM until 2:30 PM at Wertheim National Wildlife Refuge.

During the meeting the NYSDEC will provide an update on forest health and prescribed fire in the Central Pine Barrens. John Turner with the Town of Brookhaven and Seatuck will discuss the wildlife crossing installed by the town earlier this year as well as issues related to bird safety glass and ways to reduce the negative effects of bird collisions with windows and glass construction on buildings.

Science and Stewardship will be providing updates on the Commission's Conservation Management Action Plan and outline the remote sensing technologies we will be using to monitor the Central Pine Barrens habitats. During this conversation Science and Stewardship will also be calling for local experts to assist in describing specific surveys that may be desired in the future that the Commission staff can assist in by using techniques in remote sensing.

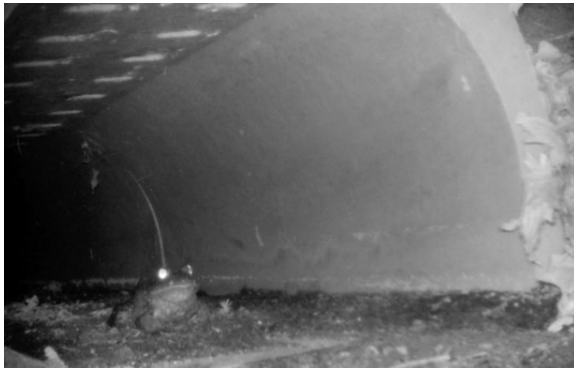


Figure 1: Frog tunnel in Town of Brookhaven

Remote Sensing Capacity and Budgeting

Throughout most of September Science and Stewardship conducted research into identifying the specific remote sensing equipment and software that will be purchased to meet our research needs.

At the end of September, Science and Stewardship met with the Commission's administration to fully describe remote sensing technologies, how each could help answer



CENTRAL PINE BARRENS COMMISSION

Science And Stewardship Program

Bimonthly Report

10/15/2025

various questions related to forest health, the pros and cons of the technologies, and the budgeting and cost estimates for each method.

In short, Science and Stewardship will be moving forward with four new techniques for collecting environmental science data that will help us not only meet our obligations under the prescribed fire contract with the DEC but expand and improve upon our understanding of environmental conditions in the Pine Barrens.

The techniques that will be incorporated into our monitoring will include LiDAR (Light Detection and Ranging), photogrammetry, multispectral imaging, and bioacoustics. Briefly, LiDAR will allow us to rapidly collect data related to forest structure, photogrammetry will assist with visualization and larger landscape scale measurements, while multispectral imaging will provide data related to vegetative species recognition, assessments of plant health, and system moisture levels including in soil.

Bioacoustic technology will provide data on wildlife within the Central Pine Barrens and is especially useful in monitoring birds, frogs, and some insects and mammals. We will be supplementing our bioacoustics research with some trail cameras which will be deployed to capture photos near our recorders.

When combined these technologies will provide Science and Stewardship with a flexible, efficient, accurate, and sharable permanent record that can be used to make better management decisions across numerous habitats and species issues within the Central Pine Barrens.

Other Activities

Science and Stewardship has continued to participate in Nature Center meetings that have occurred over the last few months. The selection process has narrowed down the choices and only a few properties remain. Looking forward to completing the selection process.

Science and Stewardship also assisted NYWIMA staff during their relocation. The room that was used by the seasonal prescribed fire staff was striped down and cleared to make room for the supplies that NYWIMA had been kept at the SCWA's Coram office.

Lastly, Science and Stewardship met with the representatives from SWCA Environmental Consulting to begin discussions for the Southampton Community Wildfire Protection Plan. Monthly meetings will be held moving forward.



2025 Fall New York Wildfire and Incident Management Academy

October 2025

The 2025 New York Wildfire and Incident Management Academy (NYWIMA) will be held from October 18 through October 24, 2025, at Brookhaven National Laboratory. This year's academy marks another strong turnout, with 115 students currently registered to attend training sessions.

The academy will offer a range of courses focused on wildfire suppression, incident management, and leadership development. Students include personnel from federal, state, and local agencies, volunteer fire departments, and conservation organizations, reflecting the Academy's mission to enhance interagency coordination and professional development in wildfire and emergency management operations.

Training will be delivered by qualified instructors from across the country, bringing a wealth of experience in fire operations, incident management, and instructional leadership. Courses will emphasize both classroom learning and field-based exercises, ensuring participants gain practical, hands-on experience aligned with National Wildfire Coordinating Group (NWCG) standards.

Preparations are underway, with logistical arrangements coordinated in partnership with Brookhaven National Laboratory staff, NYS DHSES, NYS DEC and many other agencies to ensure a smooth and efficient training week. Contingency plans are in place to accommodate any unforeseen federal government operational disruptions.

NYWIMA continues to play a critical role in strengthening New York's wildfire response capacity and fostering collaboration among agencies involved in incident management.

Wildland Firefighting & Fire Behavior Course Offerings

- S-130/S-190 (blended 2-day field sessions) – Intro to wildland firefighting and fire behavior, for FFT2 qualification (includes online L-180)
- S-200 – Incident Commander Type 4 via classroom and practical exercises.
- S-211 Portable Pumps and Water Use – Practical training on portable pumps, foam, and water deployment in field scenarios.

Leadership & Advanced Roles

- S-230 Crew Boss (Single Resource) – Training for CRWB role: crew oversight, fireline duties, safety, coordination.
- S-219 Firing Operations – Role of FIRB in planning and executing ignition strategies, safety, and risk assessment.
- S-290 Anticipating Wildland Fire Behavior – Blended course for intermediate-level fire behavior understanding.

Specialty Courses

- FI-210 – Wildland Fire Origin & Cause Determination: standardized investigator training.
- RX-300 Prescribed Fire Burn Boss – Training to plan and implement prescribed burns per NWCG PMS-484 standards.
- M-410 Facilitative Instructor – Instructor development training emphasizing adult learning and delivery effectiveness.



Compliance and Enforcement Division Report September – October 2025

Prepared by CAED Chief Enforcement Officer Alena Lawston

- We received forty-nine complaints this period for dumping, encroachment and clearing. The dumping was consistent being primarily landscaping debris, furniture, household trash, as well as construction and demolition debris.
- Eleven of these incidents were captured on surveillance cameras and referred to our law enforcement partner agencies. We have had a dramatic increase in mattresses dumps. Nine of these dumps have been documented for this period, three of which were caught on surveillance and referred to NYSP & Suffolk County Sheriff's Office. The remaining incidents caught on surveillance were C&D, landscaping debris and household garbage. They are pending with NYSP and Suffolk County Sheriff's Office.
- We are partnering with members of the Suffolk County District Attorneys BEAST Team (Biological, Environmental, and Animal Safety Team) to assist with pending cases referred to our law enforcement partners at Suffolk County Sheriff's Office.
- For this period, we have recorded a total of \$2,300 in fines with multiple cases pending.
- We continue to utilize the Flock Safety surveillance camera and all integrated shared cameras with the outside partner agencies. This type of surveillance enables our division to provide multiple leads to law enforcement for dumping within the Pine Barrens.
- We are welcoming a new Enforcement Officer, John Callagy to our team.

Timothy C. Hubbard
Member

Maria Z. Moore
Member

Daniel J. Panico
Member

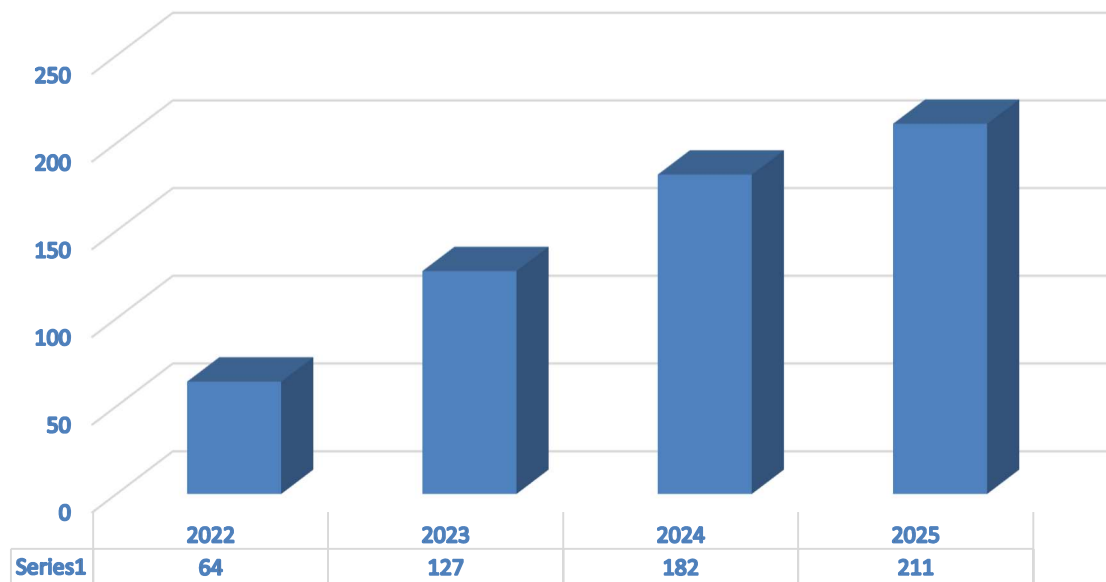
Edward P. Romaine
Member



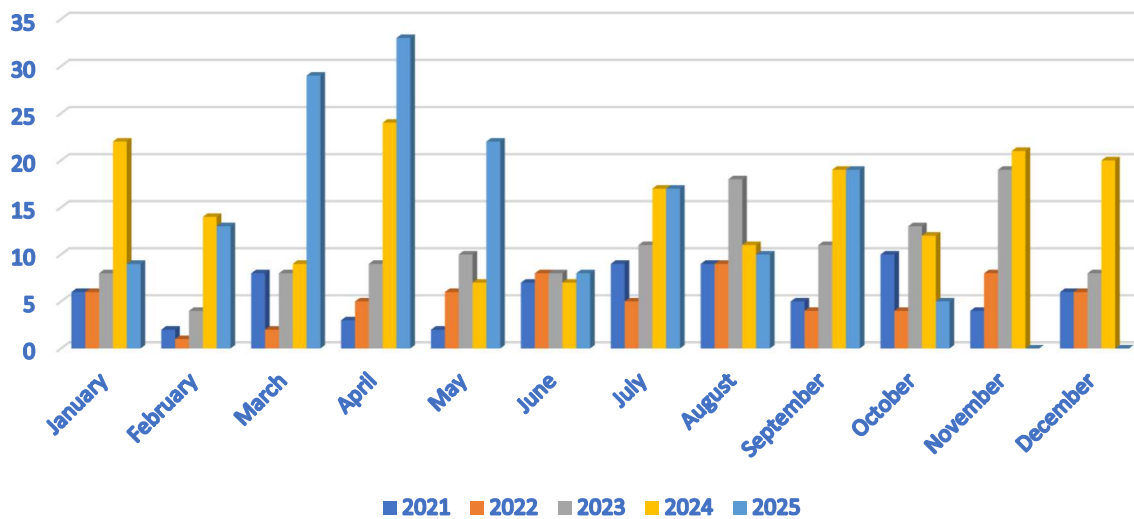
624 Old Riverhead Road
Westhampton Beach, NY
11978

Phone (631) 288-1079
Fax (631) 288-1367
www.pb.state.ny.us

Incident Statistics - Reporting Period 2021 - 2024				
Year	2022	2023	2024	2025
Intake				
Sent by Agency to Commission	14	17	9	4
Discovered by Commission Staff	41	104	163	201
Called in by Individual to Commission	8	6	10	7
Total Incidents Reported	63	127	182	212
Location of Incident				
Brookhaven	46	69	102	126
Southampton	17	50	75	74
Riverhead	0	8	5	11
Occurring on Public Land	21	79	158	186
Occurring on Private Land	22	23	22	23
Occurring on Public & Private Land	20	25	0	1
Core	38	78	140	173
Compatible Growth Area (CGA)	13	39	30	22
Core & CGA	1	1	0	1
Outside CPBA	12	9	10	13
Nature of Incident*				
Clearing/Encroachment	24	20	21	27
Structures	1	2	1	0
Dumping	35	103	153	179
Mining	0	0	1	0
Hunting	0	1	0	0
ATV	1	0	0	0
Other	4	1	2	3
Referrals*				
Sent to Town	20	6	4	3
Sent to County	12	36	31	23
Sent to State	22	33	17	13
Commission	15	8	1	0
Sent to AG	1	0	0	0
Other	5	37	16	14
Status				
Founded	50	125	179	211
Unfounded	13	2	1	0
Open	18	52	51	59
Closed	45	75	131	153
Inspections				
Conservation Easement Inspections	1	0	0	1
Development project inspections	2	0	0	0



Complaints Month/Year



Central Pine Barrens Joint Planning and Policy Commission
Land Use Division Bi-Monthly Update for the Meeting of Wednesday, October 15, 2025

Action	Central Pine Barrens Location		
Municipality	Brookhaven Town	Riverhead Town	Southampton Town
Pending Applications, Requests for Determination of Jurisdiction, SEQRA Coordination, inquiries, proposals, items and other activities	<ul style="list-style-type: none"> • Compatible Growth Area Hardship: East End Flower Farm, develop 5 acres, Manorville, CGA. • Compatible Growth Area Hardship: Sartory, Gull Dip Road, Ridge, clearing relief on single-family residence on 0.56 acre, CGA. • Core Preservation Area Hardship: Klein, 608 Middle Country Road, Middle Island, expand building and parking lot on 0.45 acres, Core. • Referral: 7 Eleven Sills Road develop a gas station and convenience store on 1.98 acres, CGA/Core. • Inquiries: cell towers on Core and CGA sites. 	<ul style="list-style-type: none"> • Inquiry: Grumman Boulevard, Calverton, industrial property redevelopment on 20 acres, Core. • Request: Governale, River Road, accessory use for a single-family residence, CGA. 	<ul style="list-style-type: none"> • Core Preservation Area Hardship: Gazza, Westhampton, wildfire risk management on six commercial properties, Core. • Request: Gazza, Westhampton, activity on Summit Blvd property, Core. • Request: Hampton West Town Park, Westhampton, expand parking lot and construct restroom, Core. • Request: MMC Properties, Westhampton, reconstruction of existing building, Core. • SEQRA Coordination: 7 Eleven Riverside develop a gas station and convenience store on 1.29 acres, CGA.
Division Activity, Regional Projects and Participation	<ul style="list-style-type: none"> • Review and analysis of land use development projects applications for Core Preservation Area and Compatible Growth Area Hardship waivers, SEQRA Coordination, interagency referrals, information requests, property inquiries, requests for determination of jurisdiction and conformance reviews. Development applications involve residential and commercial, industrial and mixed uses, zone changes, site plans, subdivisions, Developments of Regional Significance, Assertions of Jurisdiction, Critical Resource Areas and other development activities. • Monitor sites for compliance with decisions and conditions of approval. • Site inspections and land use surveys for applications. • Technical support on FOIL requests, compliance and enforcement violations, consent orders, Credit Program items, communications on land use matters, unauthorized development and clearing activities and encroachments in protected areas and regulated habitats. • Collaborate and coordinate activities with Commission divisions and interagency partners. • Central Pine Barrens Nature Center Feasibility Study progressing with review of elements including programming, funding and site selection; the second public engagement session on October 28 at Ridge Fire Department. • USGS two-year water resources study continues, 2024-2026, including groundwater sampling and monitoring in Peconic River and Carmans River. • Website management and updates on land use and planning items and seasonal changes, natural, scenic, historic and cultural resources. 		



Item 2.f. Pine Barrens Credit Program Report for October 15, 2025:

Activities in the Credit Program for 2025 included review of applications for Letters of Interpretation, Conservation Easements, Credit Program and FOIL requests management. Some specific work items include:

- Letters of Interpretation: 25 LOIs were issued and five parcels were inspected. Staff is following up on past LOIs for interest in the Program.
- Conservation Easements: Review and Monitoring
 - Five easements are currently in progress.
 - 60 easement properties with road access were inspected.



- Pine Barrens Credits
 - Redeemed: 2.31 Credits have been used for commercial and residential projects in the Town of Southampton.
 - Conveyed: 2.5 Credits have been sold in the Town of Brookhaven, Riverhead and Southampton.
 - The average price is \$112,596 per credit.
- Credit Clearinghouse Program Fund Account
 - The Commission purchased 0.10 credits.
 - Balance: \$3,296,992.
- In January, 2025 the Commission sent 380 letters to core land owners soliciting their participation in the Credit Program. It resulted in 25 LOI applications.

Pine Barrens Credit Program Statistics Table: represents figures for the total and annual summary of 2025.

Easement Protected Lands and Pine Barrens Credits As of October 7, 2025								
	Brookhaven	2025	Riverhead	2025	Southampton	2025	Total	2025
Parcels	532	1	37	-	471	-	1040	1
Acreage	833.67	0.23	516.78	-	889.51	-	2239.96	0.23
Average parcel size	1.57	0.23	13.97	-	1.89	-	2.15	0.23
Credits generated	550.26	0.10	173.39	-	340.26	-	1063.91	0.10
Credits redeemed	428.77	-	145.13	-	193.36	2.31	767.26	2.31
Credits not redeemed	121.49	-	28.26	-	146.9	-	296.65	-
Credits sold		0.60		0.50		1.4		2.5
Total value of PBC transactions		\$88,180		\$55,411		\$137,900		\$281,491
Average Credits value		\$146,967		\$110,822		\$98,500		\$112,596
Credits owned by the Clearinghouse	2.29		-		-		2.29	
# of Inspected CE Parcels	-	42	-	5	-	13	-	60
# of Installed CE Signs	141	2	15	-	91	-	247	2